

Wildwood

Nature School

Dear Neighbour,

I'm writing to you to inform you about some upcoming developments to St Mary Brookfield Hall on York Rise. We've been working for a while now on plans to open a new, independent primary school focused on well-being and outdoor education. The school will be called Wildwood Nature School. As a local resident of Dartmouth Park, I'm especially excited about what the school will bring to our close-knit community, offering an addition to the mainstream education currently on offer.

Here are a few details ahead of our opening date:

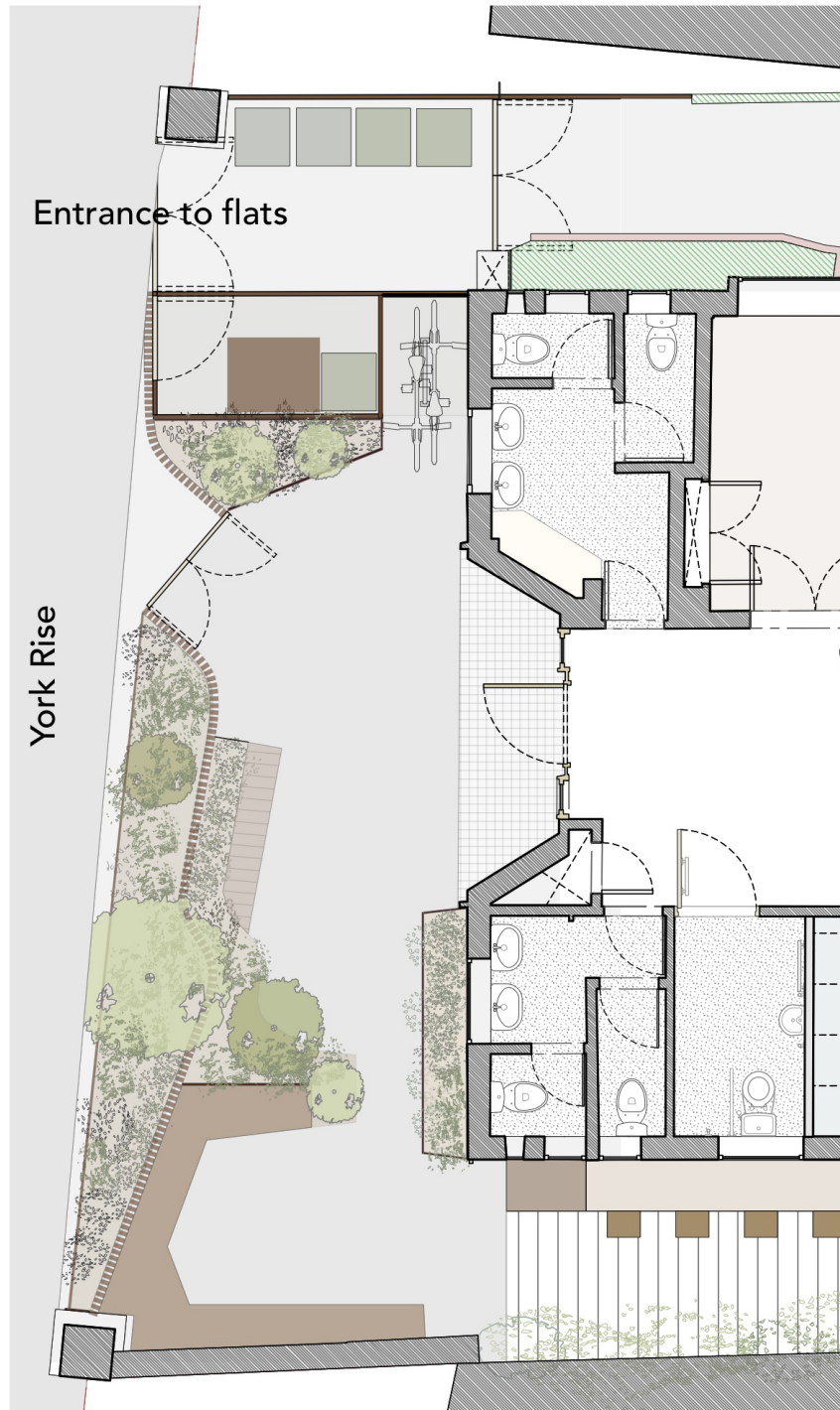
- We plan to open in September 2023 with 20 students (aged 4 -11 years), plus 4 members of staff
- We're submitting a planning application to Camden Council for change of use to a primary school and to put fencing and planting in front of the hall (PTO to see plan)
- Minor internal refurbishment works are due to start at the end of January. These will include adding a door to the side of the building to access the alleyway abutting Laurier Road
- We'll be based in the hall, but we'll spend a lot of time out in Hampstead Heath, Queens Wood and other local green spaces for our Forest School learning.
- We're ensuring that all families and members of staff commit to walking, cycling or using public transport so there shouldn't be any additional traffic as a result of the new school
- The side alley that backs onto Laurier Road will be used as part of our outdoor learning for small groups of children, rather than as a play area. So the noise levels should be far less than when York Rise Nursery used it as its primary play area for 30 years
- We'll offer after-school clubs and evening classes that will be open to the local community - please do make any suggestions of regular classes that you'd like to see at the hall

Please look at our website for more information about the school and feel free to email me with any questions or thoughts at info@wildwoodnatureschool.org.uk

Warmest wishes,

Tara Royle





Houses on Laurier Road