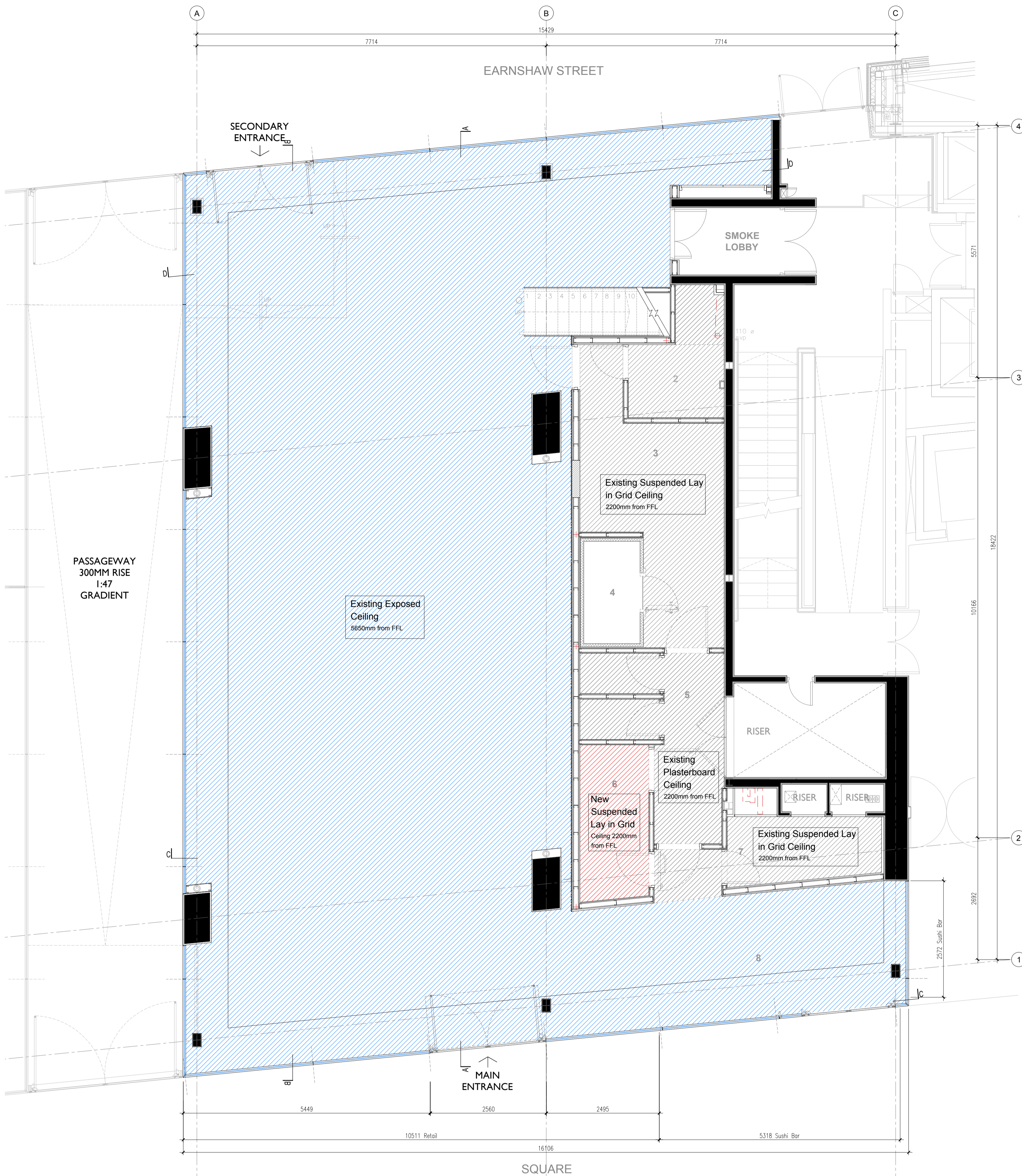


KEY

PROGRAMME

Store, Sushi Bar, Till Counter, Seating Space, Prep Kitchen
Changing Room, Office, Toilet, Walk-in Freezer, Storage.



PROPOSED GROUND FLOOR CEILING STRIP OUT PLAN
SCALE 1:50

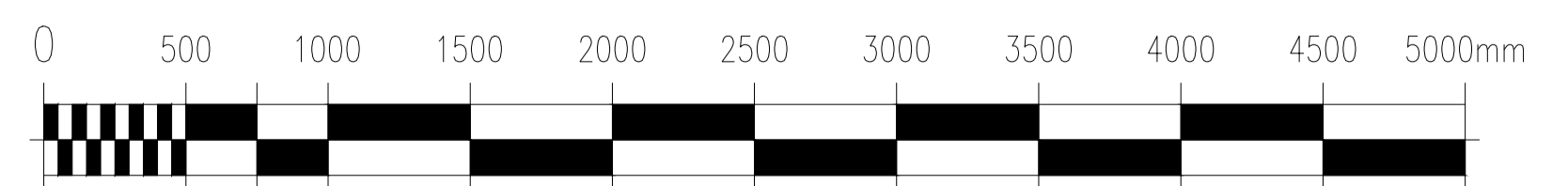
Ceiling Strip Out Description

- New Plasterboard ceiling
- Existing Plasterboard Ceiling
-Keep existing grid ceiling, lighting, CCTV, vent, and fire system
- Existing Exposed ceiling
- Keep existing lighting, duct work, CCTV, cable tray and fire system
- Existing Suspended Lay in Grid Ceiling
-Keep existing grid ceiling, lighting, CCTV, vent, and fire system

PROPOSED GROUND CEILING STRIP OUT PLAN

- FOH - Area: 200.6 sqm (CH:5650, 3897mm)
- BOH - Area: 49.8 sqm (CH:2200)
- 1. Store - Area: 183.3mm (CH:5650, 3897mm)
- 2. Office - Area: 4.8 sqm (CH:2200mm)
- 3. Prep Kitchen A - Area: 13.8 sqm (CH:2200mm)
- 4. Walk in Freezer - Area 2.8 sqm
- 5. Toilets - Area 6 sqm (CH:2200mm)
- 6. Prep Kitchen B - Area 5.1 sqm (CH:2200mm)
- 7. Storage - Area 5.3 sqm (CH:2200mm)
- 8. Sushi Bar - Area 14.2 sqm (CH:5650mm)

Ground floor Area : 250.4 sqm
Total Unit Area : 294.9 sqm



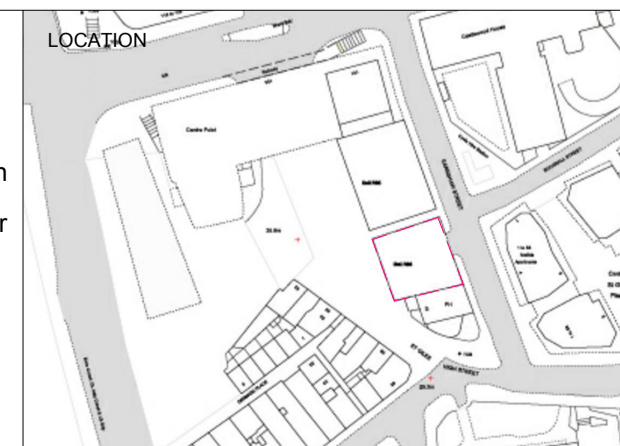
NOTE

All dimensions to be checked on site prior to commencement of any works.

This drawing represents a performance guide upon which the contractor/subcontractor must base his/her working drawings & details. Include all necessary tolerances prior to manufacture and installation.

Contractor must undertake a full survey of the area to establish all dimensions & ensure accurate setting out.

Advise on suitability of all details shown to ensure structural stability, ease and economy of construction.



studio penn london
Architecture & Interior Design
studiospace@gmail.com

job title				SEOUL PLAZA - UNIT R06 & R08 CENTRE POINT	
drawing title / location				PROPOSED CEILING STRIP OUT PLAN GROUND FLOOR	
drawn by	checked	scale	status		
JL	YH	1 : 50@A1 / 100@A3	PLANNING		
project	classification / drawing no.				
2205	2205.CP.DE.230				
revision					