

KEY

PROGRAMME

Store, Sushi Bar, Till Counter, Seating Space, Prep Kitchen
Changing Room, Office, Toilet, Walk-in Freezer, Storage.

FIRE & LIFE SAFETY

- All emergency lighting altered/installed in accordance with BS5266: part 1:2005 together with BS en 1838
- All wall panels and floor to achieve a surface spread of flame rating of class '0' sufficient to show compliance with requirement B2(internal fire spread linings).
- All fire alarm and detection altered/installed in accordance with BS en3 and BS 5306.
- All fire alarm and detection altered/installed in accordance with BS 5839: part 1 :2002
- All fire exit and associated signage altered/installed in accordance with BS 5499:part 4 :2000

DRAWING KEY

- Fire Alarm Panel
cerberus pro 360 single loop
- Red break glass
- Carbon Dioxide & Water extinguishers
- Dry powder & Foam spray fire extinguishers
- Wet chemical fire extinguishers
- Fire Blanket
- Smoke Detector
- Void Smoke Detector
- Heat Detector
- Sounder
- Bell
- Visual Alert
- Smoke Curtain(symbol)
- Smoke Curtain(automatic)
- Existing LED Wall mounted emergency twin spot light - Spec TBC
- Existing Type E recessed emergency LED, cat no. spldee3/105/E3/WH+L stand alone recessed LED emergency downlight 105 degree beam complete with 3 hour emergency

FIRE DOORS

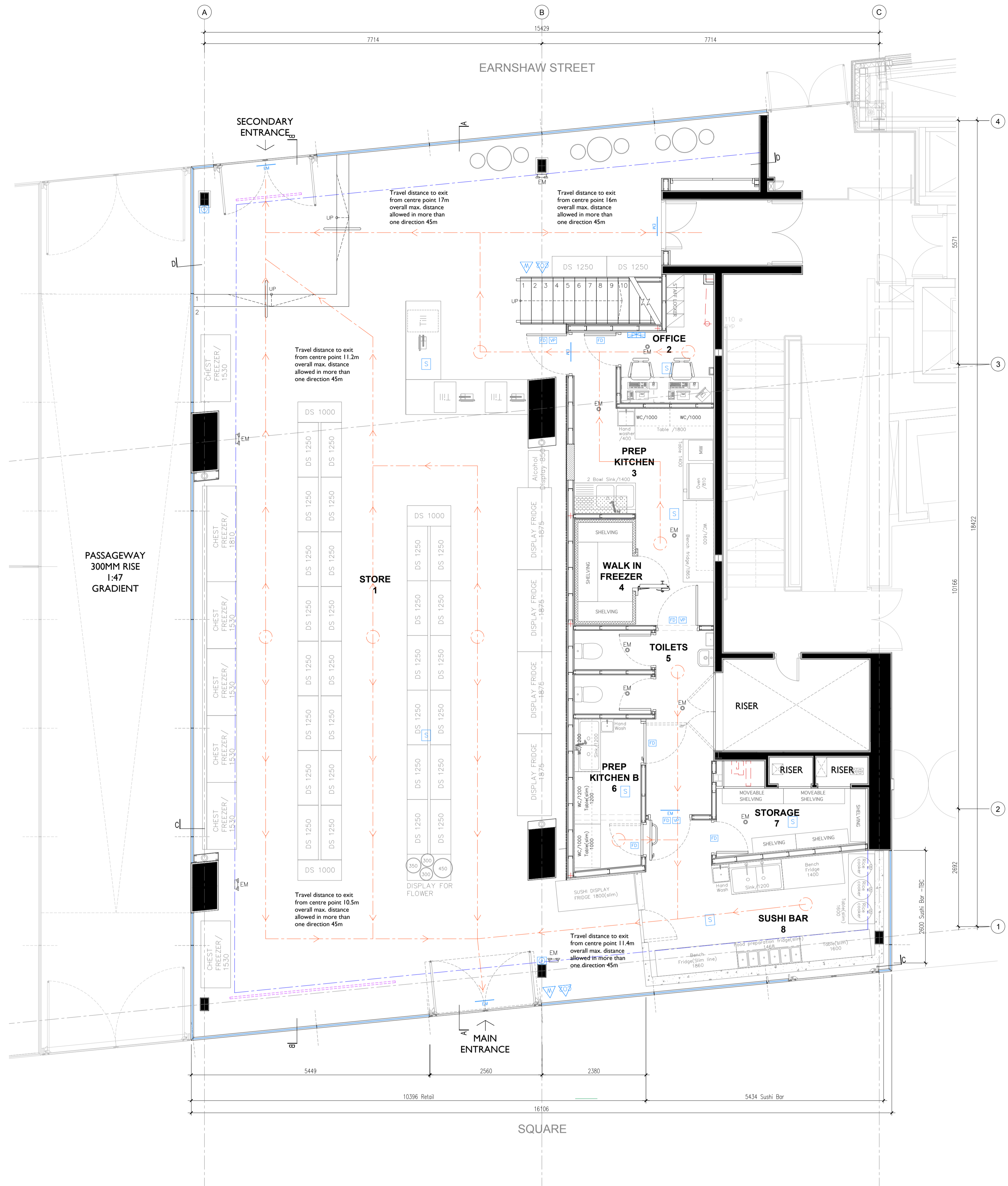
- FD30S** FD30 (S) FIRE DOOR
30 minute fire rated solid core door with cold smoke seal & intumescent strip
- FD60S** FD30 (S) FIRE DOOR
60 minute fire rated solid core door with cold smoke seal & intumescent strip

FIRE SIGNAGE

- EM** Illuminated Running Man Sign
- EMS** Fire exit sign - sticker only
fire exit sign with 80mm high letters with green running man legend arrow to suit direction of escape
- FD** Notice Fire Door Keep Shut
- VP** Vision Panel Fitted to Door

MEANS OF ESCAPE

- Fire Escape Route

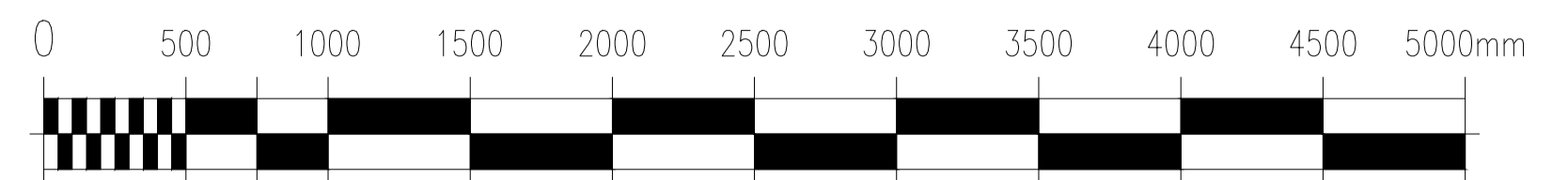


PROPOSED GROUND FLOOR FIRE STRATEGY PLAN
SCALE 1:50

PROPOSED GROUND FLOOR FIRE STRATEGY PLAN

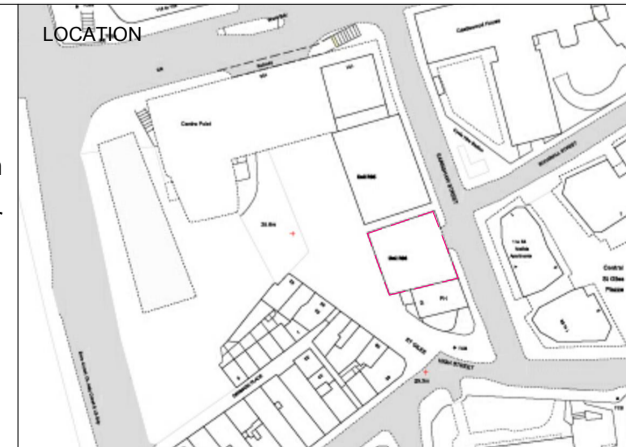
- FOH - Area: 200.6 sqm (CH:5650, 3897mm)
- BOH - Area: 49.8 sqm (CH:2200)
- 1. Store - Area: 183.3mm (CH:5650, 3897mm)
- 2. Office - Area: 4.8 sqm (CH:2200mm)
- 3. Prep Kitchen A - Area: 13.8 sqm (CH:2200mm)
- 4. Walk in Freezer - Area 2.8 sqm
- 5. Toilets - Area 6 sqm (CH:2200mm)
- 6. Prep Kitchen B - Area 5.1 sqm (CH:2200mm)
- 7. Storage - Area 5.3 sqm (CH:2200mm)
- 8. Sushi Bar - Area 14.2 sqm (CH:5650mm)

Ground floor Area : 250.4 sqm
Total Unit Area : 294.9 sqm



NOTE

All dimensions to be checked on site prior to commencement of any works.
This drawing represents a performance guide upon which the contractor/subcontractor must base his/her working drawings & details. Include all necessary tolerances prior to manufacture and installation.
Contractor must undertake a full survey of the area to establish all dimensions & ensure accurate setting out.
Advise on suitability of all details shown to ensure structural stability, ease and economy of construction.



studio penn london
Architecture & Interior Design
studiospace@gmail.com

job title	SEOUL PLAZA - UNIT R06 & R08 CENTRE POINT		
drawing title / location	PROPOSED FIRE STRATEGY PLAN GROUND FLOOR		
drawn by	checked by	scale	status
JL	YH	1:50@A1 / 100@A3	PLANNING
project	classification / drawing no.		revision
2205	2205.CP.DE.350		