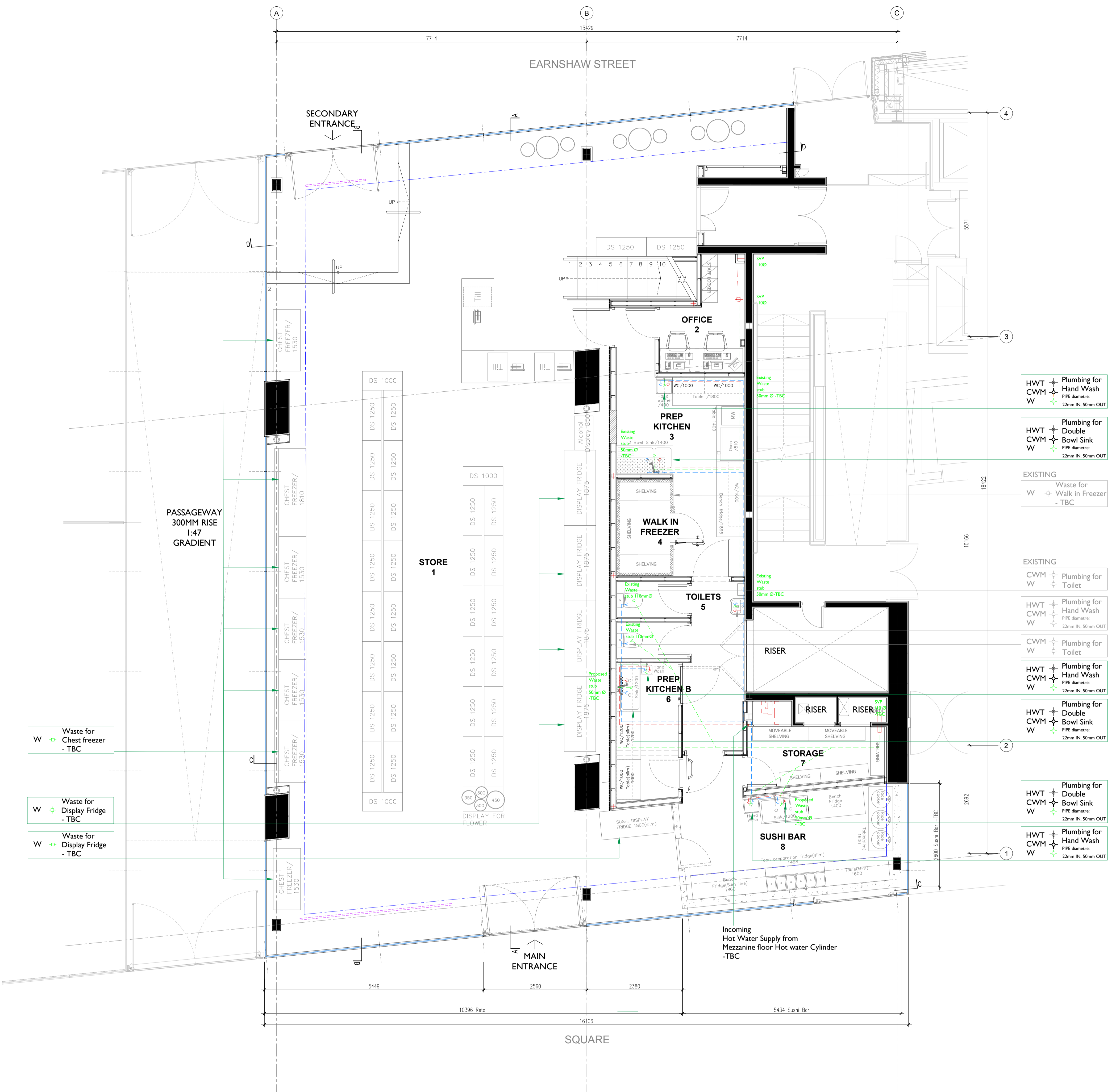


KEY

PROGRAMME

Store, Sushi Bar, Till Counter, Seating Space, Prep Kitchen
Changing Room, Office, Toilet, Walk-in Freezer, Storage.



PROPOSED GROUND FLOOR PLUMBING LAYOUT
SCALE 1:50

DRAWING KEY

- CWM Cold Water Mains Water Supply
- CWF Cold Water Filtered Water Supply
- TW Tundish Waste
- W Waste
- HWT Hot Water Tank Supply
- W Waste Drainage Point

SERVICE KEY

- Cold Water
- Hot Water
- Drainage

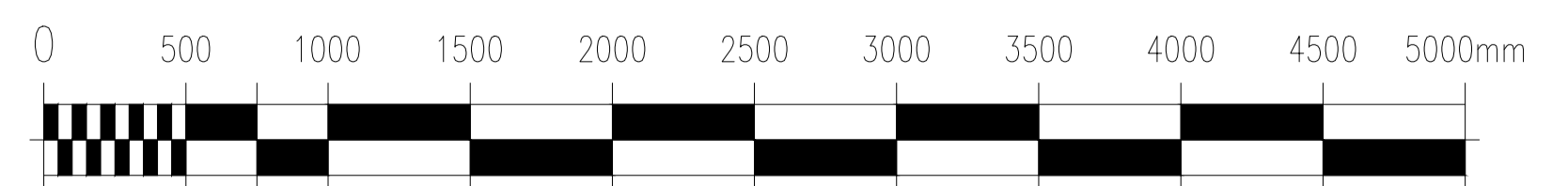
DRAWING KEY

- Existing Water & Drainage
- Proposed new Water & Drainage

PROPOSED GROUND FLOOR PLUMBING LAYOUT

- FOH - Area: 200.6 sqm (CH:5650, 3897mm)
- BOH - Area: 49.8 sqm (CH:2200)
- 1. Store - Area: 183.3mm (CH:5650, 3897mm)
- 2. Office - Area: 4.8 sqm (CH:2200mm)
- 3. Prep Kitchen A - Area: 13.8 sqm (CH:2200mm)
- 4. Walk in Freezer - Area 2.8 sqm
- 5. Toilets - Area 6 sqm (CH:2200mm)
- 6. Prep Kitchen B - Area 5.1 sqm (CH:2200mm)
- 7. Storage - Area 5.3 sqm (CH:2200mm)
- 8. Sushi Bar - Area 14.2 sqm (CH:5650mm)

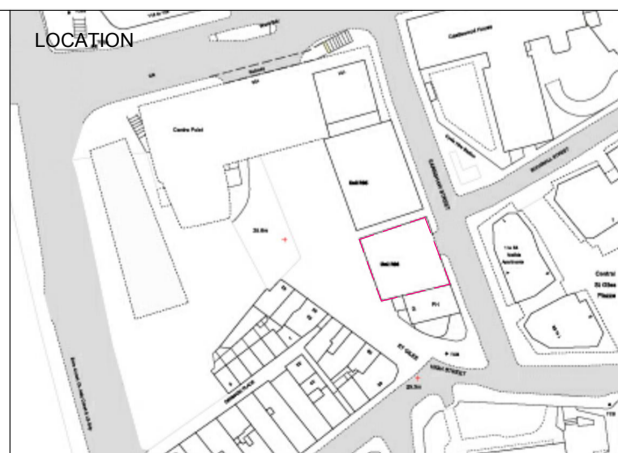
Ground floor Area : 250.4 sqm
Total Unit Area : 294.9 sqm



A. 02/02/2023 - Amended drainage for sushi display

NOTE

All dimensions to be checked on site prior to commencement of any works.
This drawing represents a performance guide upon which the contractor/subcontractor must base his/her working drawings & details. Include all necessary tolerances prior to manufacture and installation.
Contractor must undertake a full survey of the area to establish all dimensions & ensure accurate setting out.
Advise on suitability of all details shown to ensure structural stability, ease and economy of construction.



studio penn london
Architecture & Interior Design

job title	SEOUL PLAZA - UNIT R06 & R08 CENTRE POINT		
drawing title / location	PROPOSED PLUMBING LAYOUT GROUND FLOOR		
drawn by	checked by	scale	status
JL	YH	1 : 50 @ A1 / 100 @ A3	PLANNING
project	classification / drawing no.	revision	
2205	2205.CP.DE.330	A	