

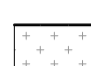

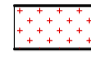


KEY

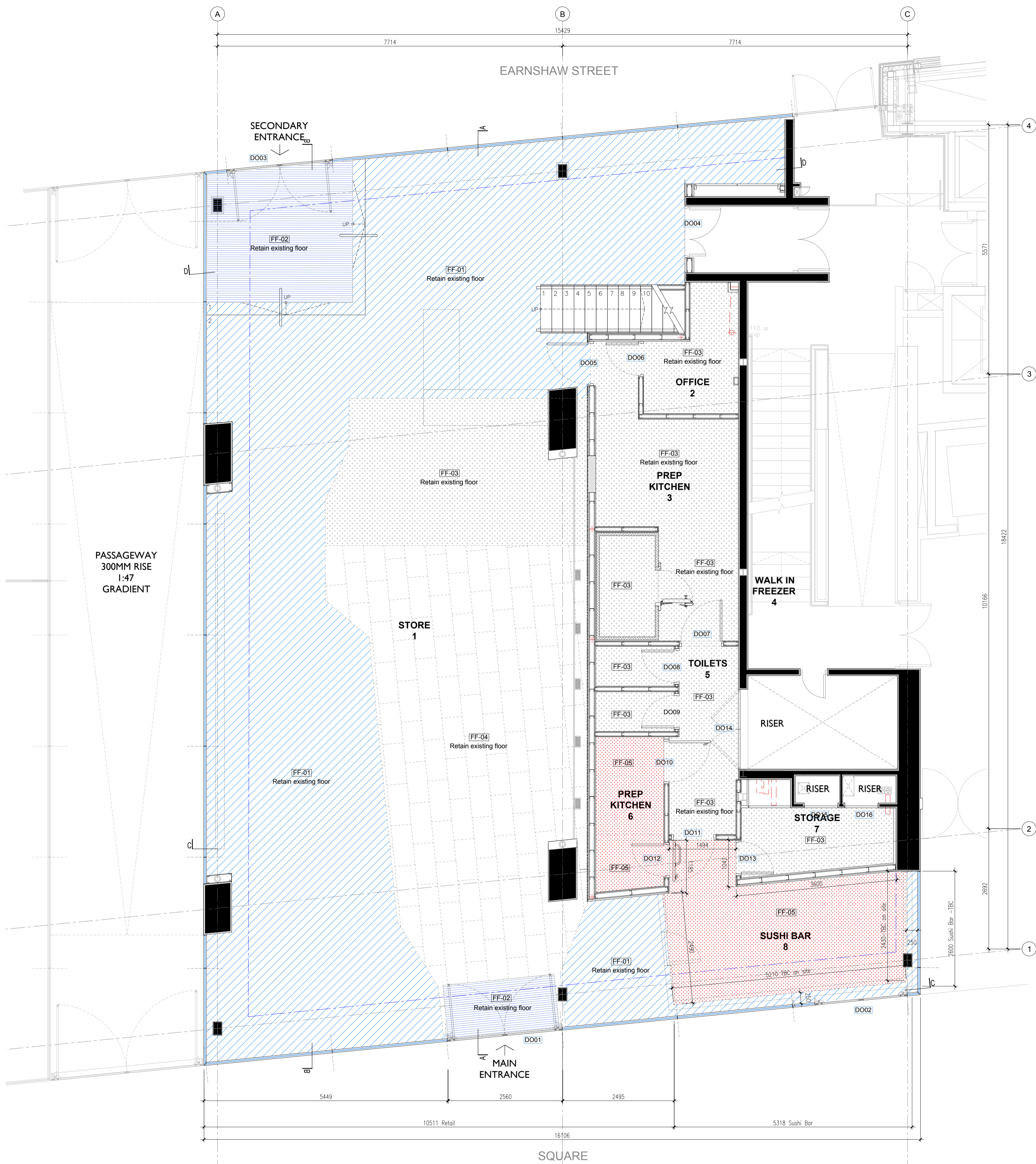
PROGRAMME

Store, Sushi Bar, Till Counter, Seating Space, Prep Kitchen
Changing Room, Office, Toilet, Walk-in Freezer, Storage.

INTERNAL FLOOR FINISHES SPECIFICATION

- FF-01  Existing Wooden floor
Hawwoods, ref:PLF4258SDH
2.5 thick x 102W x 612L
Laid in Herringbone pattern
- FF-02  Existing Entrance Matting
EMS CT001 Black
Spec: Top Guard 12mm Construction
Matt with aluminium, scraper linking strip
- FF-03  Existing Altro Safety floor
2.5mm Anti-slip flooring or similar - TBC
Altro walkway black 20 safety floor
- FF-04  Existing Polyflor floor
Polyflor black treadplate ref. 8122
457x914mm laid brick bond pattern
-TBC
- FF-05  Proposed Altro Safety floor
Stronghold Monsoon(K30153)
2.5mm Anti-slip flooring or similar -TBC
Anti slip finish : R11, Gray colour

*All the floor finish to be confirmed by client directly.
*Keep existing flooring and make good condition



PASSAGEWAY
300MM RISE
1:47
GRADIENT

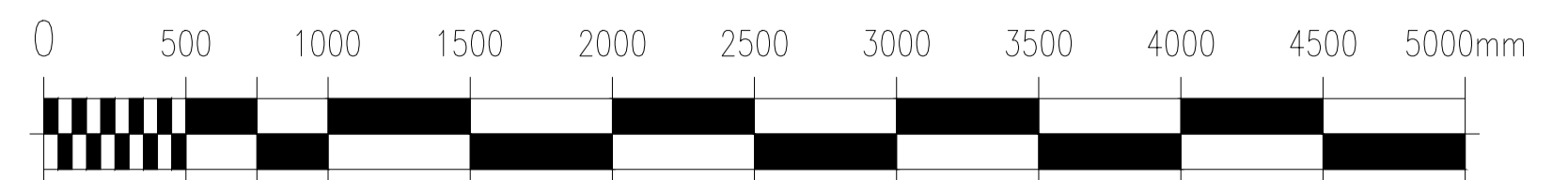
PROPOSED GROUND FLOOR - FLOOR FINISH PLAN
SCALE 1:50

PROPOSED GROUND FLOOR FINISH PLAN

FOH - Area: 200.6 sqm (CH:5650, 3897mm)
BOH - Area: 49.8 sqm (CH:2200)

- 1. Store - Area: 183.3mm (CH:5650, 3897mm)
- 2. Office - Area: 4.8 sqm (CH:2200mm)
- 3. Prep Kitchen A - Area: 13.8 sqm (CH:2200mm)
- 4. Walk in Freezer - Area 2.8 sqm
- 5. Toilets - Area 6 sqm (CH:2200mm)
- 6. Prep Kitchen B - Area 5.1 sqm (CH:2200mm)
- 7. Storage - Area 5.3 sqm (CH:2200mm)
- 8. Sushi Bar - Area 14.2 sqm (CH:5650mm)

Ground floor Area : 250.4 sqm
Total Unit Area : 294.9 sqm



A. 02/02/2023 - Amended floor finish size(sushi bar area).

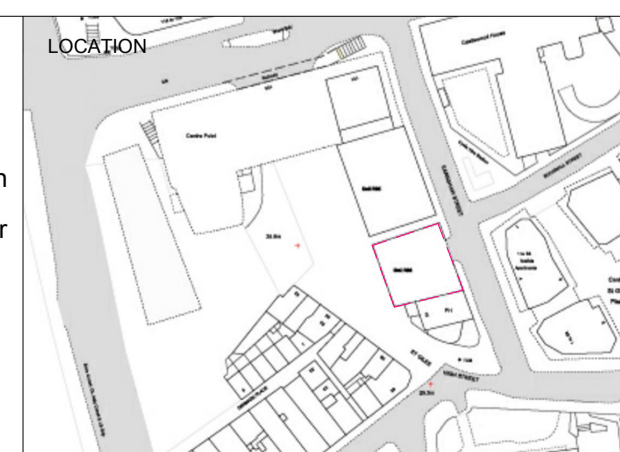
NOTE

All dimensions to be checked on site prior to commencement of any works.

This drawing represents a performance guide upon which the contractor/subcontractor must base his/her working drawings & details. Include all necessary tolerances prior to manufacture and installation.

Contractor must undertake a full survey of the area to establish all dimensions & ensure accurate setting out.

Advise on suitability of all details shown to ensure structural stability, ease and economy of construction.



studio penn london
Architecture & Interior Design

job title	SEOUL PLAZA - UNIT R06 & R08 CENTRE POINT		
drawing title / location	PROPOSED FLOOR FINISH PLAN GROUND FLOOR		
drawn by	checked by	scale	status
JL	YH	1 : 50 @ A1 / 100 @ A3	PLANNING
project	classification / drawing no.	revision	
2205	2205.CP.DE.290	A	