



# Your Air Conditioning Proposal

## **At the property:**

Roof Room  
17 Greville Place  
NW6 5JE

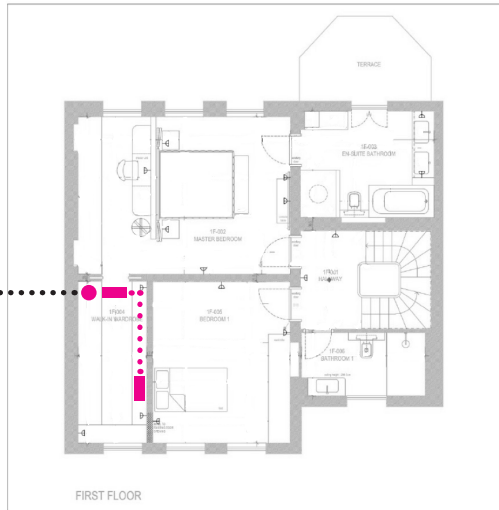
(Images are not to scale and are intended for rough guidance)

# General Layout

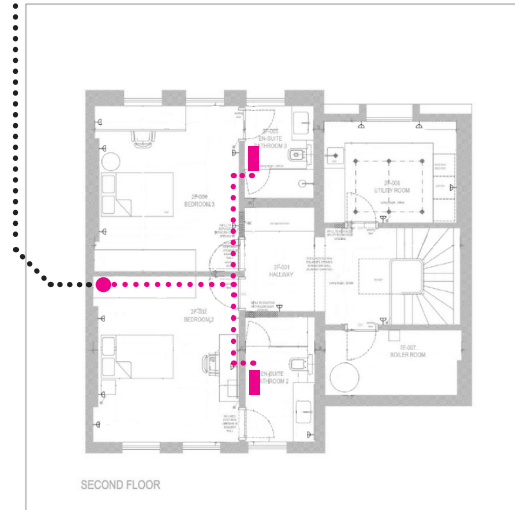
All Pipe runs are:

- 1/2 - 5/8 copper pipe
- Interconnect cable
- Drain Tube

Pipework up from study below.  
See Photo 4



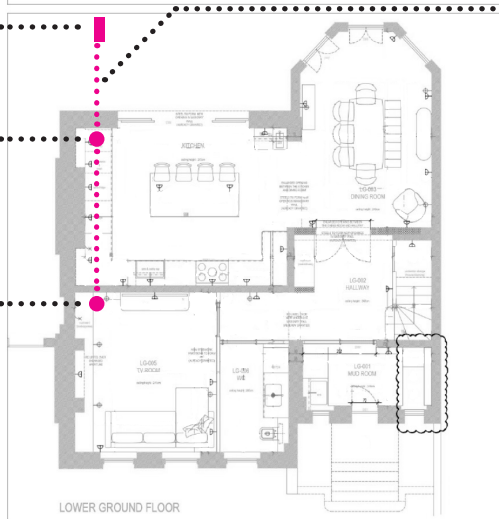
Pipework up from walk in wardrobe below.



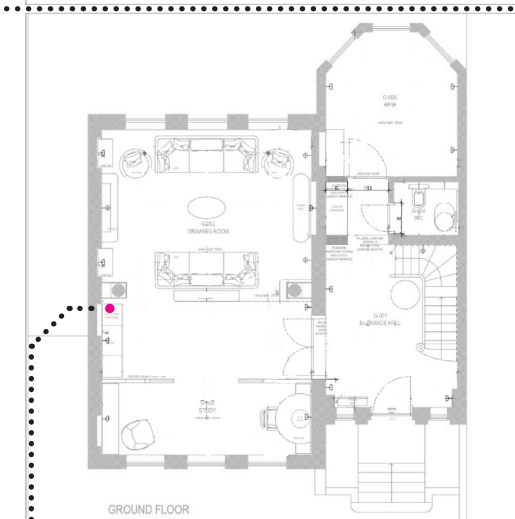
External Box  
See Photo 1

Pipework in ceiling.  
See Photo 2

Pipework up through floor into study.  
See Photo 3



Pipework will run under the patio.



Pipe hidden in study to walk in wardrobe above

## Outdoor Condenser

Daikin RX7SQ6

Height: 1.4m

Width: 940mm

Depth: 320mm

Sound Pressure: 51dba



Pies will runder  
under patio  
into the hosue.

Photo 1

## Pipe Runs



AC Pipe run going outside through walls.

Photo 2

## Pipe Runs

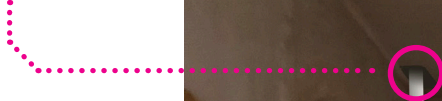
●●●●● Pipe run goes up through the ceiling into the study.



Photo 3

# 1st Floor Master Bedroom

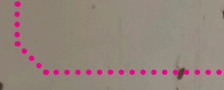
Up to  
2nd floor  
wardrobes.



2nd Internal  
AC Unit



1st Internal  
AC Unit



Pipework  
going up from  
TV room

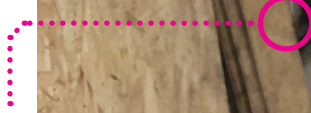


Photo 4

# Unit Mapping



OUI-RXYSQ6TV9

