

- General notes:**
- Positions of all equipment, ductwork and fittings are indicative only.
 - Contractors shall confirm the sequence of installation works to ensure safe access is maintained.
 - Attention is drawn to health & safety issues. Liaise with the main contractor to ensure that installation works are programmed to respect H&S sites and reference coordination.
 - All dimensions / duct sizes are in millimetres unless otherwise stated.
 - This drawing was produced using CAD and should not be amended by hand.
 - All dimensions shown are for reference and should be checked on site prior to commencement of work.
- Specific notes:**
- This drawing should be read in conjunction with all architectural, structural and drawings from other services (incl. mechanical, catering, electrical, sprinklers) along with contract documentation and specifications for the works.
 - Ensure all method statements, sign offs and approvals are in place before proceeding with any work.
 - All works to be carried out in accordance with the current British Standards, B.S. Codes of practice and building regulations.
 - The HVAC services works shall be carried out in full accordance with the client specification and shall, together with any further technical guide and specifications.
 - Ductwork shall be installed in accordance with all current industry standard guidelines / requirements.
 - Coloured ductwork to be manufactured to DW164.
 - Ductwork sized in accordance with all current industry standard guidelines / requirements. Duct dimensions shown on drawings are duct internal dimensions (not including flanges and fittings).
 - Access doors required on kitchen extract duct every 1500mm for cleaning and before / after every change of direction & should be accessible at all locations via ceiling access panels or gabled ceilings etc. Access panels to be provided by main contractor in any gabled ceilings where that requirements indicated by HVAC installation contractor.
 - Duct connections with fans and other equipment to be manufactured correct connection to prevent duct leakage and transmission of vibrations.
 - Volume control dampers shall be provided on all branches and diffuse / grille terminals to facilitate commissioning.
 - Supply and secondary fan coil unit ductwork to be fully insulated.
 - Finish all intakes and exhausts locations are shown individually on these drawings. The exact positions shall be agreed with the client, architect and the main contractor and shall be shown accordingly on the working / coordinated drawings.
 - Positions of all grilles / air outlets shown are in optimum positions for all flow. The grilles to be positioned as close as possible to location shown and coordinated with other services and fabric constraints.
 - Fire dampers are to be shown on ductwork (including kitchen extract ducts) penetrating the compartment fabric and shall incorporate certified fire dampers to match the lower rating, together with access panels. Reference to be made to architect fire strategy drawing to establish locations. Fire dampers are shown indicatively on these drawings.
 - All transfer grilles and ductwork where the rated, shall match the fire rating of the wall in which it is installed.
 - Attenuation and anti-vibration measures shall be incorporated on all plant and ductwork supports in full accordance with acoustic consultant's specification.
 - Access required to all plant equipment for maintenance and cleaning.
 - Refer to catering specialist layout to determine confirmed canopy size and location.
 - Condensate drain from AC condensers to be cut to the nearest waste connector or to rooftop drain. Condensate drain from the FCU's to be cut to the nearest drain (25mm), subject to manufacturer and their requirements. Both shall be the equivalent plastic or copper drain.
 - Install all mechanical equipment in accordance with manufacturers guidelines.
 - Covering condensers are not CIVL equipment. However, they are indicatively shown on CIVL drawings to allow for prohibited space and access within the HVAC plant area.
 - Locations of all required floor, wall and roof openings shall be co-ordinated with all other trades involved.
 - No other loads (other services or man loading) shall be hung from ductwork supports.

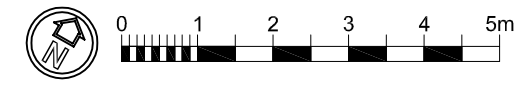
No.	Date	Rev. By	Revision Description
-	-	-	-

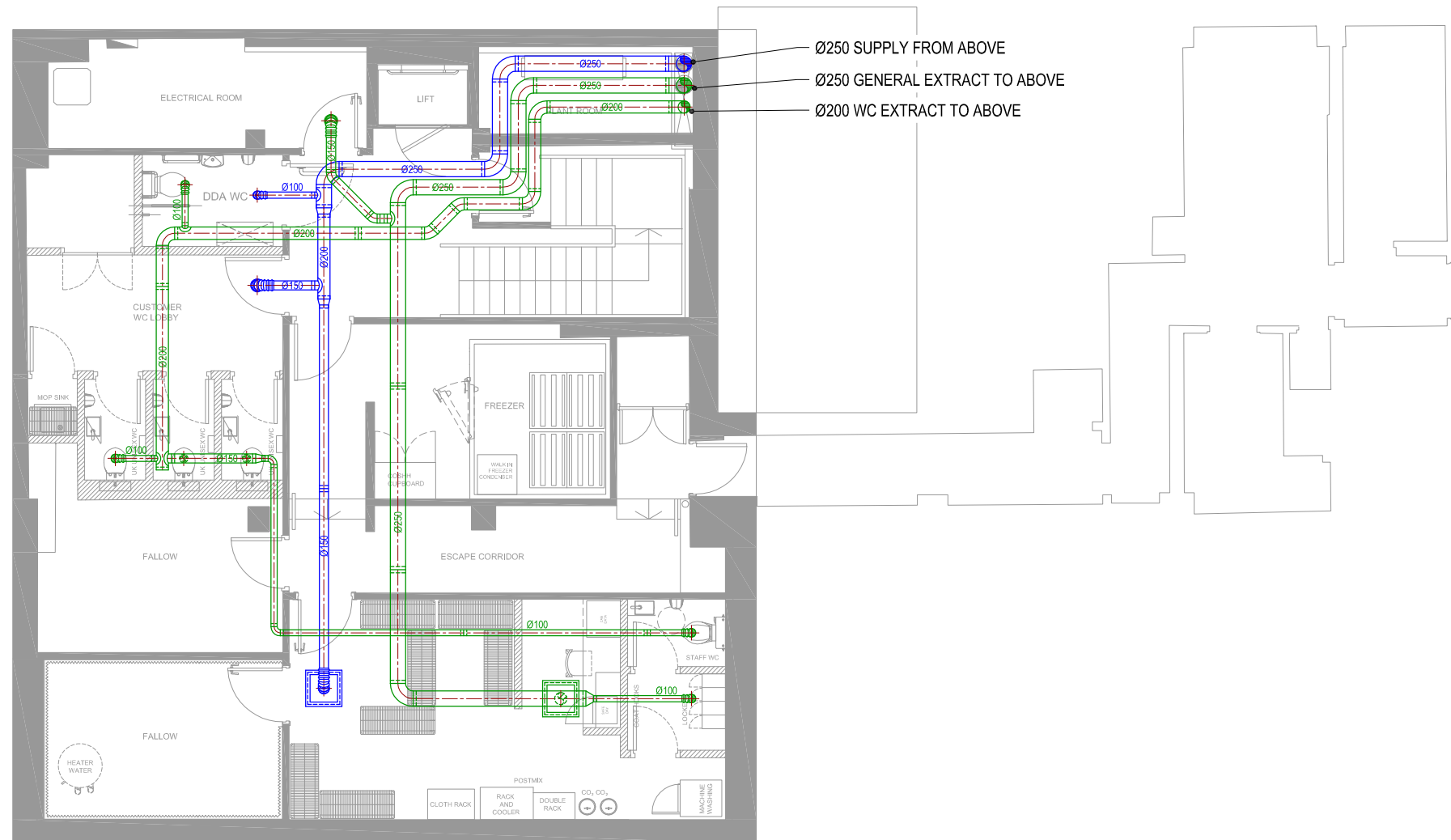
Project:
POPEYES
 122-126 KILBURN HIGH ROAD
 LONDON NW6 4HY

Drawing Title:
**HVAC LAYOUT
 GROUND FLOOR**

Drawing No.: 001-1010-11
 Rev: -
 Scale: 1:50 @ A1 1:100 @ A3
 Drawn By: PR Date: 06/01/23

chapman ventilation
 15-20 Woodside Road, Welwyn Garden City
 Hertfordshire AL7 1JQ
 Tel: 01707 372658 Fax: 01707 325001
 E-mail: info@chapmanventilation.co.uk
 Web: www.chapmanventilation.co.uk
 Copyright of this drawing resides with Chapman Ventilation Limited





- General notes:
- Positions of all equipment, ductwork and fittings are indicative only.
 - Contractors shall confirm the sequence of installation works to ensure safe access is maintained.
 - Attention is drawn to health & safety issues. Liaise with the main contractor to ensure that installation works are programmed to respect H&S sites and reference coordination.
 - All dimensions / duct sizes are in millimetres unless otherwise stated.
 - This drawing was produced using CAD and should not be amended by hand.
 - All dimensions shown are for reference and should be checked on site prior to commencement of work.

- Specific notes:
- This drawing should be read in conjunction with all architectural, structural and drawings from other services (incl. mechanical, catering, electrical, sprinklers) along with correct documentation and specifications for the works.
 - Ensure all method statements, sign offs and approvals are in place before proceeding with any work.
 - All works to be carried out in accordance with the current British Standards, B.S. Codes of practice and building regulations.
 - The HVAC services works shall be carried out in full accordance with the client specification and shall, together with any further technical details and specifications.
 - Ductwork shall be installed in accordance with all current industry standard guidelines / requirements.
 - Coloured ductwork to be manufactured to DW164.
 - Ductwork shall be installed in accordance with all current industry standard guidelines / requirements. Duct dimensions shown on drawings are duct internal dimensions (not including flanges and fittings).
 - Access doors required on flexible extract duct every 1500mm for cleaning and before / after every change of direction & should be accessible at all locations via ceiling access panels or gipsed ceilings etc. Access panels to be provided by main contractor in any solid ceilings where that requirements indicated by HVAC installation contractor.
 - Duct connections with fans and other equipment to be manufactured canvas connection to prevent duct thermal noise and transmission of vibrations.
 - Volume control dampers shall be provided on all branches and diffuser / grille terminals to facilitate commissioning.
 - Supply and secondary fan coil unit ductwork to be fully insulated.
 - Final air intake and exhaust locations are shown individually on these drawings. The exact positions shall be agreed with the client, architect and the main contractor and shall be shown accordingly on the working / coordinated drawings.
 - Positions of all grilles / air outlets shown are in optimum positions for all flow. The grilles to be positioned as close as possible to location shown and coordinated with other services and fabric components.
 - Fire dampers are to be shown on ductwork (including kitchen extract ducts) penetrating fire compartment divisions and shall incorporate certified fire dampers to match the lower rating, together with access panels. Reference to be made to architect fire strategy drawing to establish locations. Fire dampers are shown individually on these drawings.
 - All transfer grilles and ductwork where fire rated, shall match the fire rating of the wall in which it is installed.
 - Abatement and anti-vibration measures shall be incorporated on all plant and ductwork supports in full accordance with acoustic consultant's specification.
 - Access required to all plant equipment for maintenance and cleaning.
 - Refer to ceiling schedule layout to determine confirmed canopy size and location.
 - Condensate drain from AC condensers to be cut to the nearest waste connection or to rooftop drain. Condensate drain from the FCU's to be cut to the nearest drain (25mm), subject to manufacturer and their requirements. Both shall be the equivalent plastic or copper pipe.
 - Install all mechanical equipment in accordance with manufacturers guidelines.
 - Covering condensers are not CVL equipment. However, they are indicated shown on CVL drawings to allow for prohibited space and access within the HVAC plant area.
 - Locations of all required floor, wall and roof openings shall be co-ordinated with all other trades involved.
 - No other loads (other services or man loads) shall be hung from ductwork supports.

No.	Date	Rev. By	Revision Description
-	-	-	-

Project:

POPEYES

122-126 KILBURN HIGH ROAD
LONDON NW6 4HY

Drawing Title:

**HVAC LAYOUT
BASEMENT**

Drawing No.: 001-1010-12

Rev: -

Scale: 1:50 @ A1 1:100 @ A3

Drawn By: PR Date: 06/01/23

chapman ventilation

15-20 Woodside Road, Welwyn Garden City
Hertfordshire AL7 1JQ
Tel: 01707 372658 Fax: 01707 325001
E-mail: info@chapmanventilation.co.uk
Web: www.chapmanventilation.co.uk

Copyright of this drawing resides with Chapman Ventilation Limited

