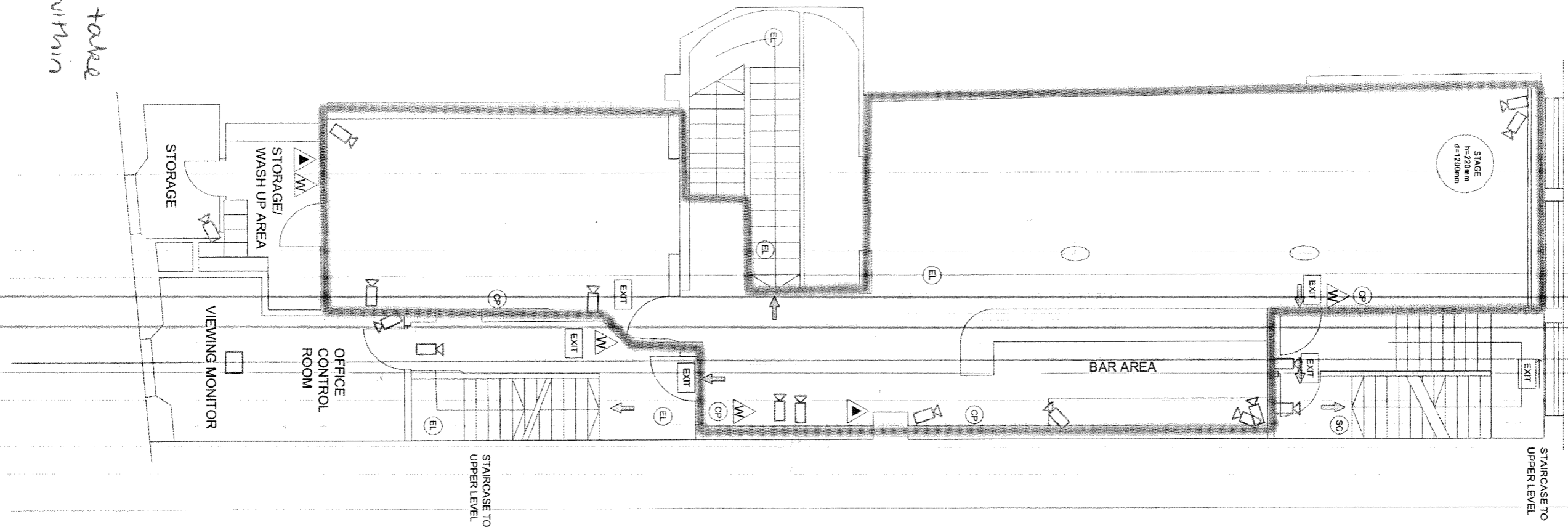


EXISTING FIRST FLOOR PLAN

Loose furniture is
indicative only
Licenseable activities take
place anywhere
the premises



RED ROOMS
4 GREAT QUEENS ST
LONDON
WC2

LEGENDS

	FIRE ALARM CALL POINT
	EMERGENCY LIGHTING (INSTALLATION TO BE MADE IN ACCORDANCE WITH BS5266)
	MANUS OPERATED SMOKE CALL HEADS SMOKE DETECTORS TO BS 5446:1 1999
	22KG CARBON DIOXIDE
	FIRE BLANKET IN CONTAINER
	9L WATER EXTINGUISHER
	FIRE EXIT SIGN (WALL MOUNTED)
	FIRE EXIT SIGN
	CCTV
	VIEWING MONITOR
	FIRE EXIT
	DISABLE ACCESS/EXIT

Drawing Reference: RRF C1

SCALE: 1:100 @A3

Revision: A002

Rev A002-
additional CCTV installed

DRAWING BY:
DORIAN HAXHIA