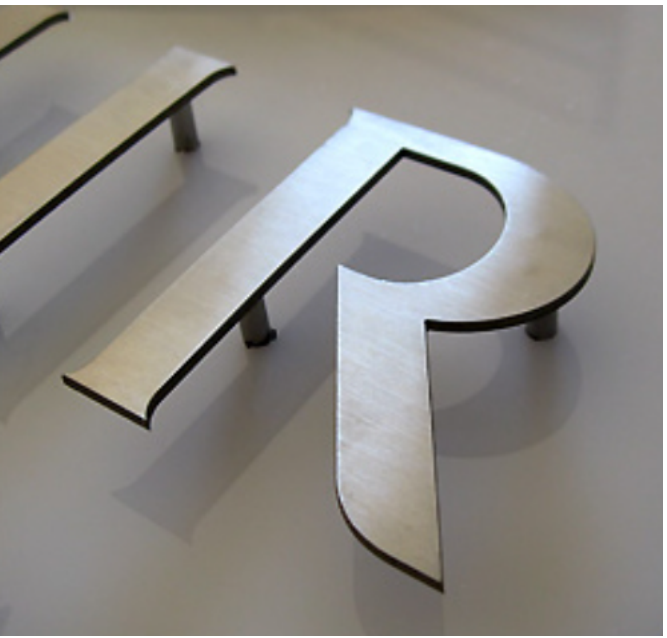


Material specification:
Letters to be 3mm flat cut Stainless Steel (horizontal grain)
stud mounted to reclaimed timber facade with a stand off of
approx 10mm to clear variations in the surface of the timber
cladding.

Lettering: Work Sans Bold
(25 tracking all lettering with standard word spacing@1:50.
Final subject to detailed set out to accomodate joints)

300mm cap letter-height
Spacing 225mm (0.75 cap) approx between lines



Example: Stud mounted lettering



Example: Roundhouse reclaimed
timber cladding.

Align



19/01/23

EXTERNAL SIGNING OVERLAY
NORTH ELEVATION- PROPOSED
Low level lettering on timber cladding

DO NOT SCALE

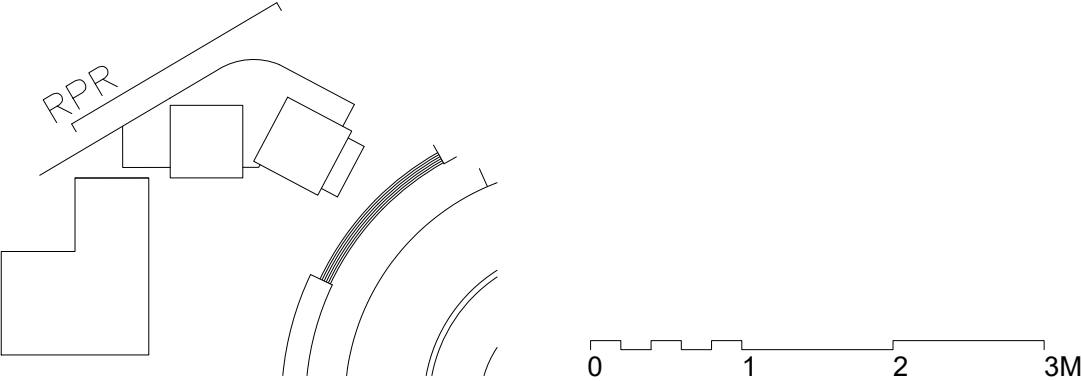
THE CONTRACTOR IS TO CHECK AND VERIFY ALL
BUILDING AND SITE DIMENSIONS, LEVELS AND SEWER
INVERT LEVELS AT CONNECTION POINTS BEFORE
WORK STARTS.

THIS DRAWING IS TO BE READ AND CHECKED IN
CONJUNCTION WITH ENGINEERS AND OTHER
SPECIALIST DRAWINGS.

THE DRAWING AND THE WORKS DEPICTED ARE THE
COPYRIGHT OF REED WATTS ARCHITECTS AND MAY
NOT BE REPRODUCED EXCEPT BY WRITTEN PERMISSION.

REV	DATE	DESCRIPTION
-	23.09.19	STAGE 3 FOR COSTING
A	10.11.22	GENERAL UPDATE

- KEY FACADE TYPES
- TYPE 01: TIMBER RAINSCREEN CLADDING WITH METAL TRIMS
 - TYPE 02: TIMBER PLANT ENCLOSURE SCREEN
 - TYPE 03: TIMBER RAINSCREEN CLADDING
 - TYPE 04: ALUMINIUM CURTAIN WALLING
 - TYPE 05: PROFILED METAL RAINSCREEN CLADDING WITH METAL TRIMS
 - TYPE 06: FLAT SHEET RAINSCREEN CLADDING



DRAWING	
PROPOSED ELEVATION 02 REGENTS PARK ROAD	
DRAWING NO 1906(0)351	REVISION A
SCALE 1:50 @ A1 1:100 @ A3	DATE 11.07.19
STATUS FOR INFORMATION	

www.reedwatts.com
studio@reedwatts.com

REED
WATTS

PROJECT 1906 ROUNDHOUSE CAMPUS