



Middlesex Hospital Annexe Site
44 Cleveland Street, W1T 4JU

For and on behalf of University
College London Hospitals Charity
(UCLHC)

Condition 23g Brick Sample Panels

Condition 23g: Details, Full scale sample panels of brickwork and glazing elements of no less than 1m by 1m including junction with window opening demonstrating the proposed colour, texture, face-bond and pointing should be erected on-site and approved by the Council before the relevant parts of the work are commenced.



Design team

Llewelyn Davies
Temple
Aecom
Arup

Issued - 12 - 01 - 2023

Condition 23g - Brick Sample Panels

Introduction

Introduction

Middlesex Hospital Annex,
44 Cleveland Street, London,
W1T 4JT.

Applications by University College London Hospitals
Charity.

Discharge of Planning Condition 27g as per
planning permissions Ref 2017/0414/P, dated
15/01/2018 (as amended by planning permission
Ref 2018/1584/P, dated 30/09/2019 and planning
permission amended Ref 2021/3088/P, dated
12/07/2021 and Appeal Decision Ref APP/
X5210/W/22/3300894 approved date 01/12/2022.

Condition 23g (part of condition 23).

The condition reads:

*“Detailed drawings, or samples of materials
as appropriate, in respect of the following,
shall be submitted to and approved in writing
by the local planning authority prior to the
commencement of any above-ground works:*

*Condition 23g: Details, Full scale sample
panels of brickwork and glazing elements
of no less than 1m by 1m including junction
with window opening demonstrating the
proposed colour, texture, face-bond and
pointing should be erected on-site and
approved by the Council before the relevant
parts of the work are commenced.*

The following information has been provided:

- Site photographs of constructed sample panels;
- Elevations and visuals as per the approved scheme.

5 Sample panels have been constructed consisting
of the following bricks:

- Panel 01 - Wienerberger White Glazed Facing
brick with window opening & window.
- Panel 02 - consisting of Cametech Ibiza Smooth
White with the Wienerberger Avenue Black
Smooth brick (brick banding or adjoining brick
panel)
- Panel 03 - Wienerberger Staffordshire Smooth
Blue brick
- Panel 04 - Wienerberger Avenue Black Smooth
brick
- Panel 05 - Wienerberger White Glazed Facing
brick

We believe the information submitted for condition
23g contained within this report to be sufficient to
discharge the planning condition as per the appeal
decision Ref APP/X5210/W/22/3300894 approved
date 01/12/2022.

Brick Panel 1

Brick Panel 01

Product reference: Wienerberger White Glazed Facing brick.

Type: Wirecut- Facing description: Glazed- Dry brick weight (kg): 2.7- Voids (%): 16-21- Active soluble salts: S2- Reaction to Fire: Euroclass A1

Configuration: Vertically Perforated; except at locations referred to in clause 109.-
Compressive strength mean Value: 50N/mm²-
Category: Refer to Manufacturer-
Freeze/Thaw Resistance: F2- **Work Sizes (length x width x height):** 215x102x65 mm-
Tolerance category: T2 R1- **Density- Gross Dry:** 1700Kg/m³- **Thermal Conductivity:** 0.55W/mk-
Water vapour permeability: tabulated from BS EN 1745: 5/15µ- **Water absorption**

Manufacturer: Wienerberger UK
Kingsbury Works, Rush Ln, Dosthill, Tamworth B77 1LT

Mortar Colour Dark Grey

Approved planning scheme No change compared to approved planning drawings.

Area of brickwork to be used: As per planning application drawings. Glazed bricks to be used for the main residential entrance on the public space area.

Sample Panel: Exceeds 1m x 1m requirement as per elevation. Part window could not be procured and a small window was used to illustrate head and cill jamb junctions.



Sample panel 01 - illustrating White glazed facing brick.



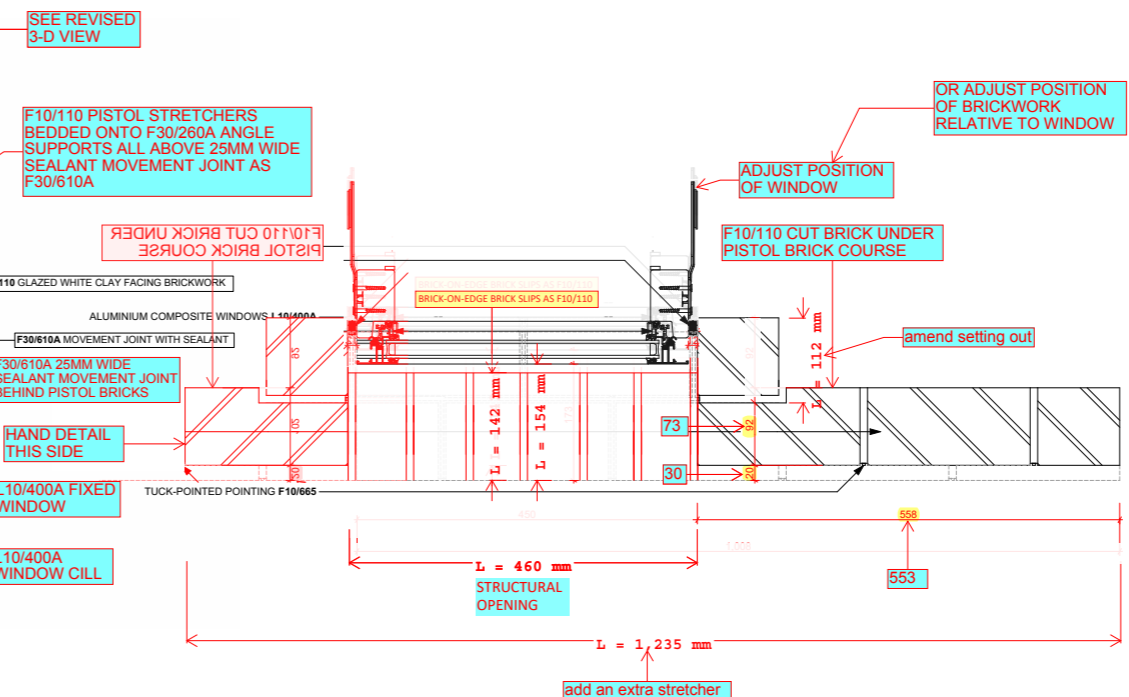
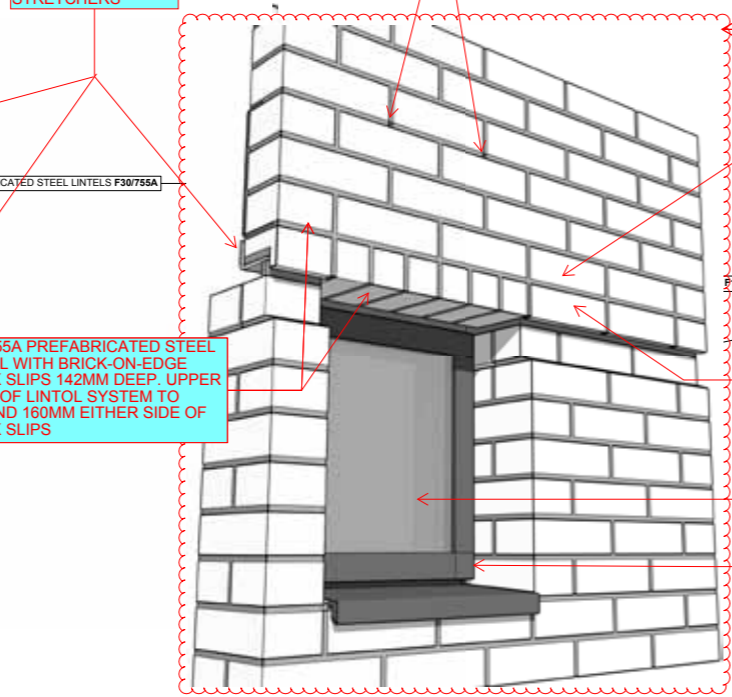
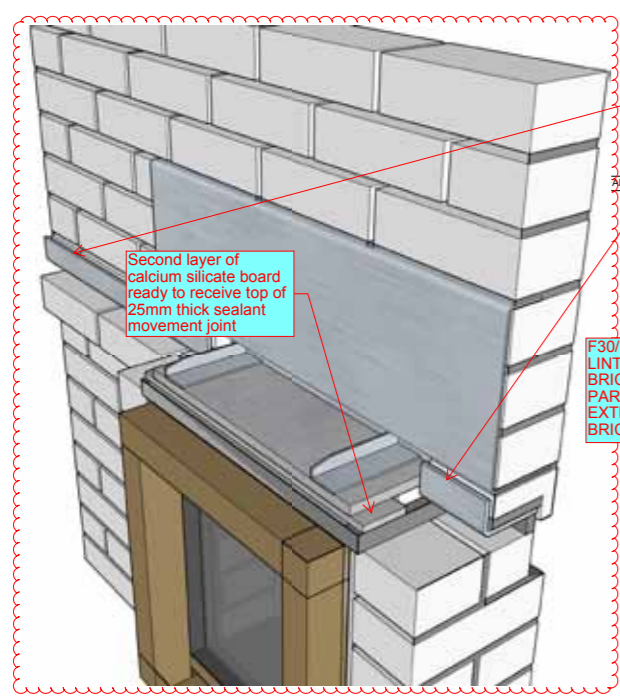
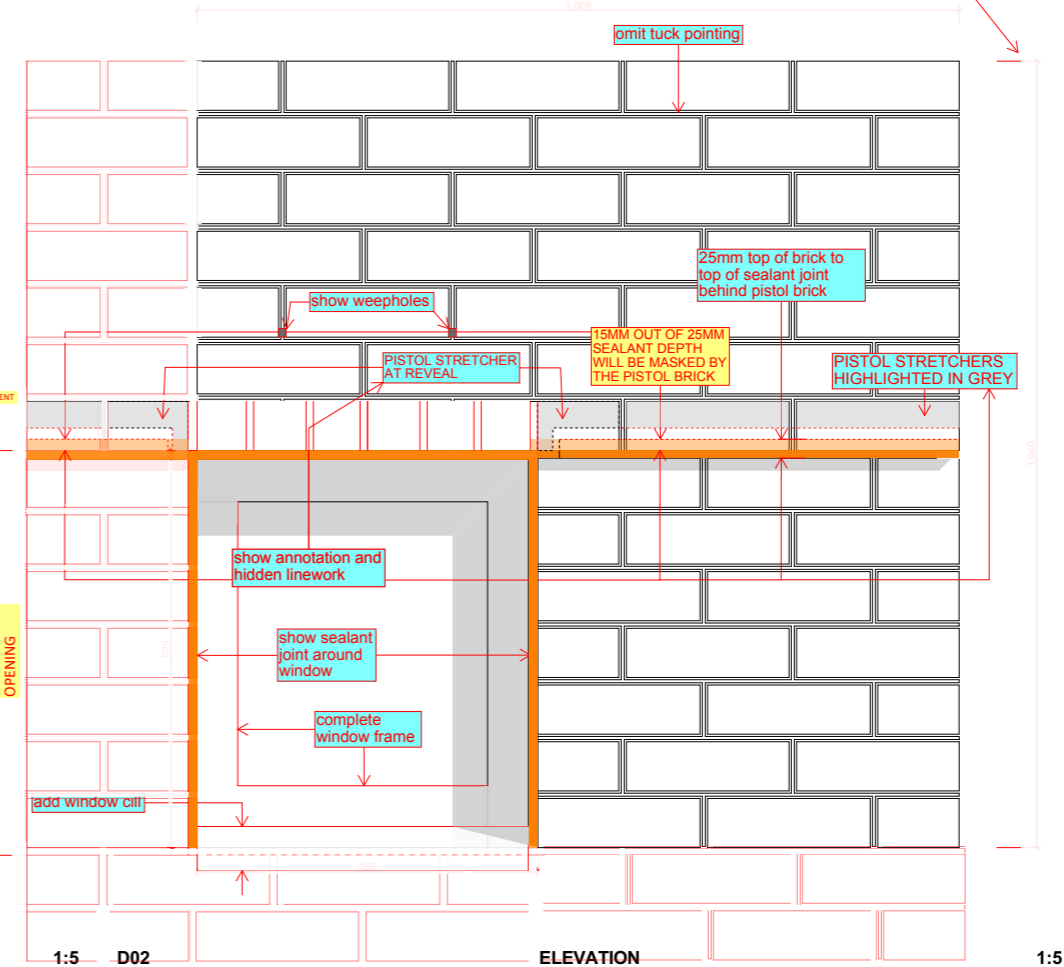
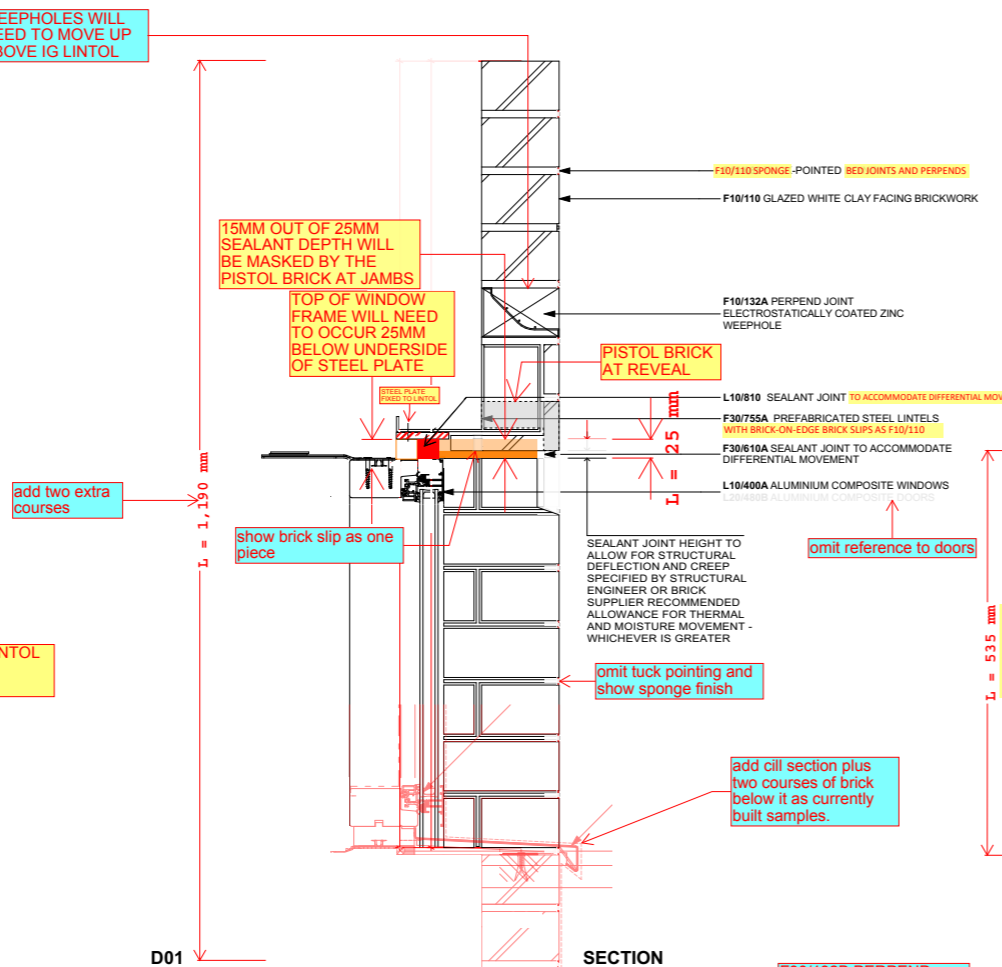
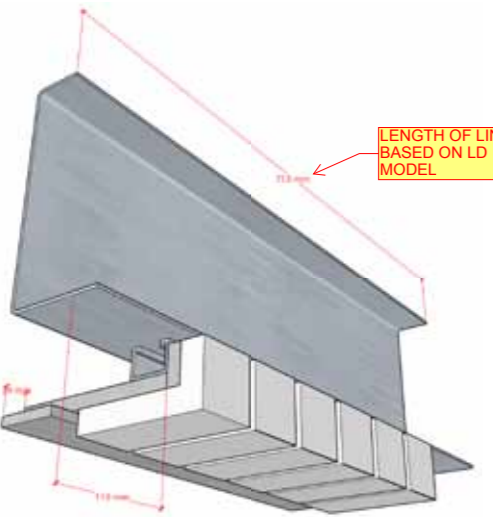
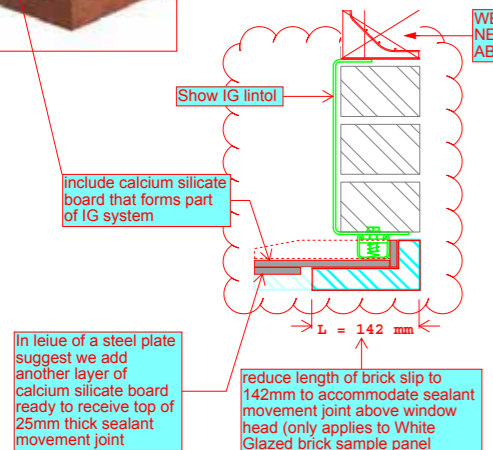
Detail of white glazed facing brickwork



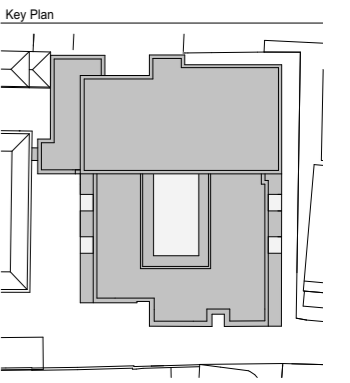
White glazed bricks used for residential entrance

Approved scheme visuals

Brick Panel 1



- Do not scale off this drawing
 - All dimensions are shown in mm unless otherwise stated
 - Refer to drawing issue sheet for purpose of issue
 - If in doubt ask
 - © Llewelyn Davies



AMEND NOTE

Notes:

- AS DISCUSSED WITH THE CONTRACTOR, BACKGROUND FOR FIXING OF WINDOW FRAME AND STABILISING OF BRICKWORK TO BE CONFIRMED BY CONTRACTOR

- SAMPLE PANEL TO BE SUPPORTED ON THREE COURSES OF STRETCHER BONDED COMMON BLOCKWORK

ADD NOTE

Reviewed by LD
 24/11/2022 16:30:45

Reviewed by LD
 22/11/2022 15:57:09

LD15 078.00	14.04.2022	ML
LD15 078.00	12.04.2022	ML
Rev	Description	Date
Structural Consultant Services Consult		
AECOM	ARI	
Cost Consultant		
EQUALS CONSULTING		
Project Title		
BEDFORD PASSAGE DEVELOPMENT		
BEDFORD HOUSE:		
MRI SUITE (D1), COMMERCIAL (B1)		
BEDFORD COURT:		
AFFORDABLE HOUSING (C3)		
Client		
MIDDLESEX ANNEXE LLP		
Drawing Title		
SAMPLE PANEL 01		
Project Number	Revis	
LD15 078.00	CC	
Drawing Number		
BPD-LDW-NB-ZZ-DR-A-251301		
Scale @ Middlesex Annex - Condition 23g	5	
1:5	21/08/20	
Architects		

Brick Panel 2

Brick Panel 02

Product reference: Camtech Ibiza Smooth White

Type: Wirecut- Facing description: Active soluble salts: S2- Reaction to Fire: Euroclass A1

Configuration: Multi-Perforated.;
Average compressive strength: >50 N/mm²
Category: I, HD clay bricks
Freeze/Thaw Resistance: F2
Work Sizes (length x width x height): 215x102.5x65 mm
Tolerance categories:
Length: T2 (+/- 4mm) / R2
Width: T2 (+/- 3mm) / R2
Thickness: T2 (+/- 2mm) / R2
Density- Gross Dry: 1335 kg/m³, D1 (10%, +/- 133.5 kg/m³)
Thermal Conductivity: 0,39 W/mK
Water vapour diffusion coefficient: : 50/100
Water absorption: <6% m/md

Manufacturer: Camtech, 21 Jarman Way, Royston, Herts, SG8 5HW

Mortar Colour Dark Grey

Approved planning scheme No change compared to approved planning drawings.

Area of brickwork to be used: As per planning application drawings. white bricks to be used for levels 04, 05, 06 & 07.

Sample Panel: Exceeds 1m x 1m requirement as per elevation. Part window could not be procured and a small window was used to illustrate head and cill jamb junctions.

See sample panel 04 for dark brick details and specification.



Sample panel 02 - illustrating White smooth facing brick. Dark coloured brick trim and panels are Black smooth brick, see sample panel 04 for brick type and manufacturer reference.



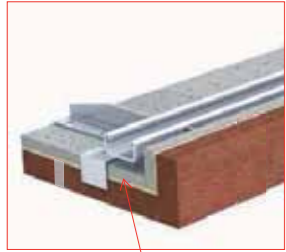
Detail of white smooth facing brickwork



White smooth facing bricks used for residential upper floors brickwork

Approved scheme visuals

Brick Panel 2



include calcium silicate board that forms part of IG system

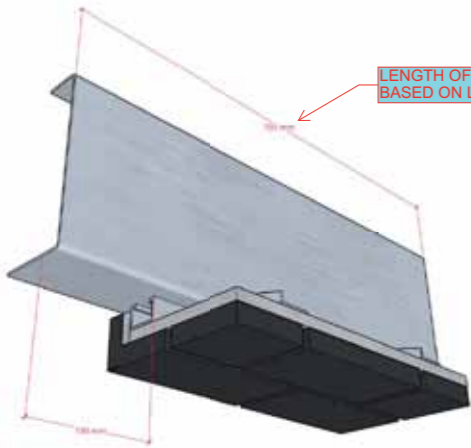
Show IG lintel

WEEPHOLES WILL NEED TO MOVE UP ABOVE IG LINTOL

L = 102 mm

As the brick slips are cut from solid bricks we can see stretcher bond on the soffit

LENGTH OF LINTOL BASED ON LD MODEL



PREFABRICATED STEEL LINTOLS F30/75A

ALUMINIUM COMPOSITE WINDOWS L10/400A

F30/75A PREFABRICATED STEEL LINTOL WITH STRETECHER BOND BRICK SLIPS. UPPER PART OF LINTOL SYSTEM TO EXTEND BEYOND BRICK SLIPS

D04

3D VIEW

D03

3D VIEW

D01

SECTION

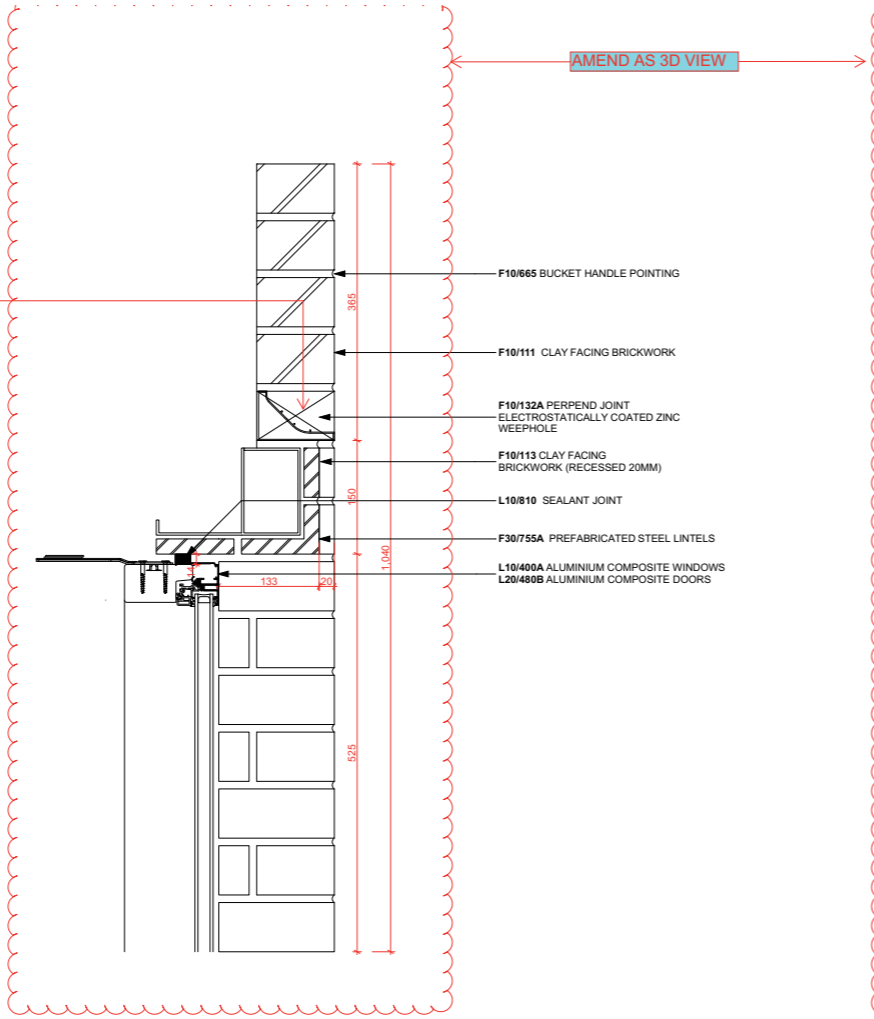
1:5

D02

ELEVATION

1:5

AMEND AS 3D VIEW



F10/665 BUCKET HANDLE POINTING

F10/111 CLAY FACING BRICKWORK

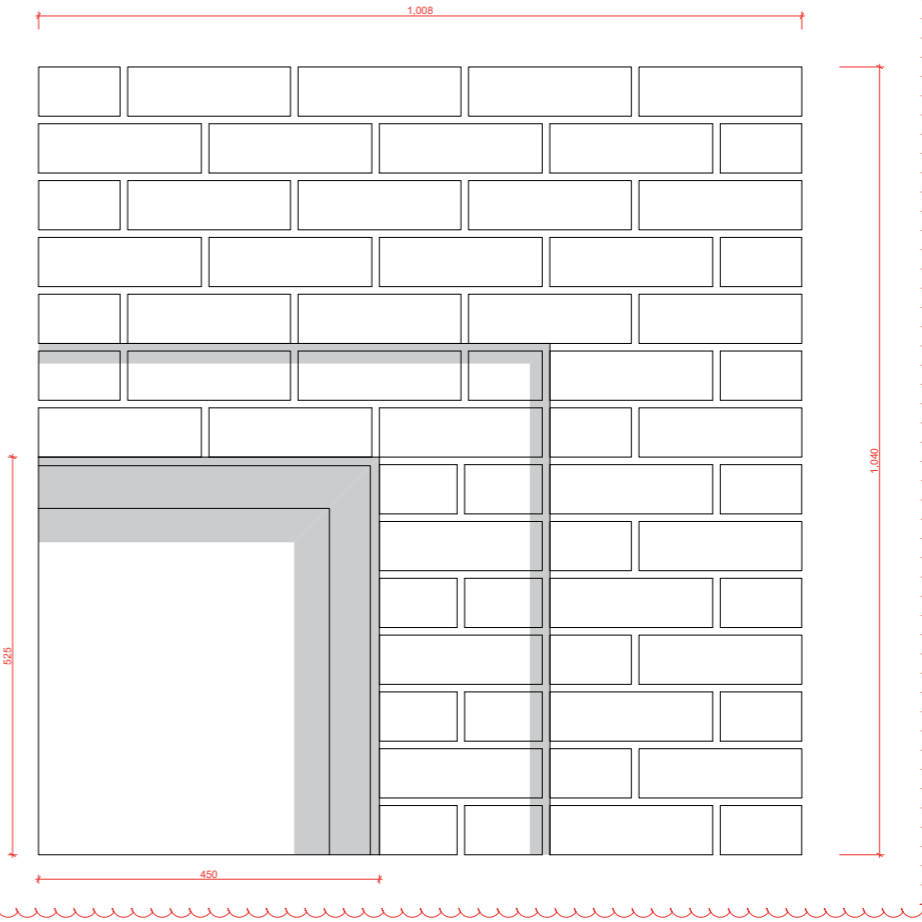
F10/132A PERPEND JOINT ELECTROSTATICALLY COATED ZINC WEEPHOLE

F10/113 CLAY FACING BRICKWORK (RECESSED 20MM)

L10/810 SEALANT JOINT

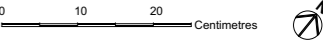
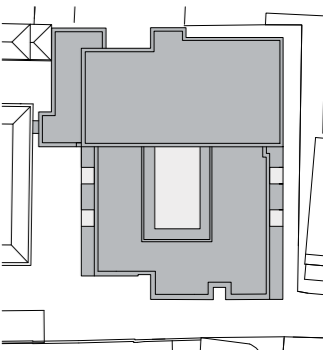
F30/75A PREFABRICATED STEEL LINTELS

L10/400A ALUMINIUM COMPOSITE WINDOWS L20/480B ALUMINIUM COMPOSITE DOORS



- Refer to drawing issue sheet for purpose of issue
- If in doubt ask
- © Llewelyn Davies

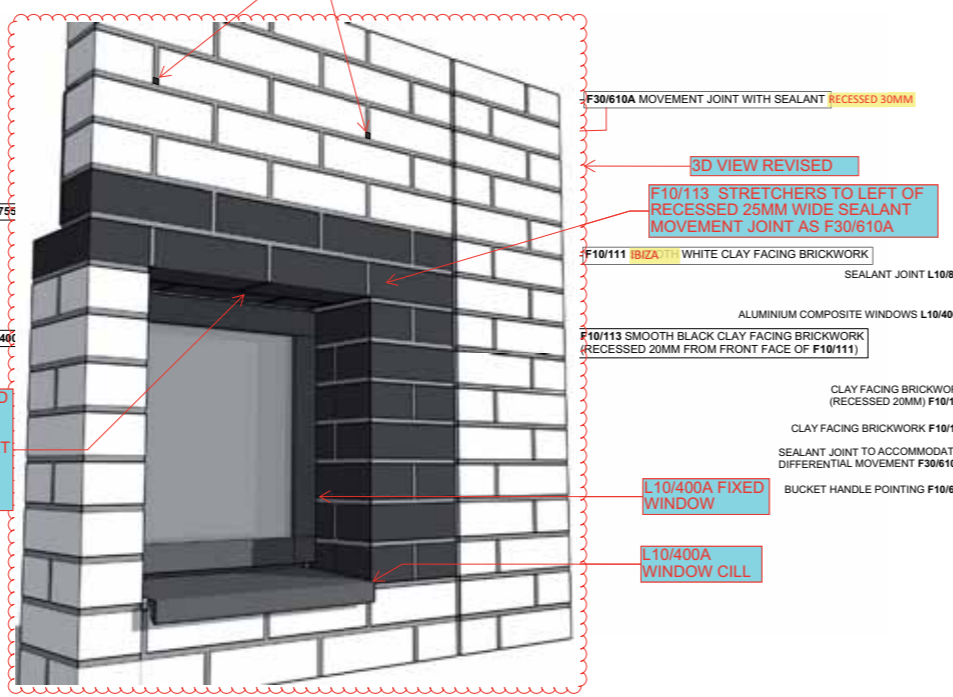
Key Plan



Notes:
- AS DISCUSSED WITH THE CONTRACTOR, BACKGROUND FOR FIXING OF WINDOW FRAME AND STABILISING OF BRICKWORK BE REVIEWED AT A SITE WORKSHOP

F30/132B PERPEND JOINT FIRE RATED CAVITY WEEP HOLES

AMEND AS 3D VIEW



F30/610A MOVEMENT JOINT WITH SEALANT RECESSED 30MM

3D VIEW REVISED

F10/113 STRETCHERS TO LEFT OF RECESSED 25MM WIDE SEALANT MOVEMENT JOINT AS F30/610A

F10/111 (BIZA) WHITE CLAY FACING BRICKWORK

SEALANT JOINT L10/810

ALUMINIUM COMPOSITE WINDOWS L10/400A

F10/113 SMOOTH BLACK CLAY FACING BRICKWORK (RECESSED 20MM FROM FRONT FACE OF F10/111)

CLAY FACING BRICKWORK (RECESSED 20MM) F10/113

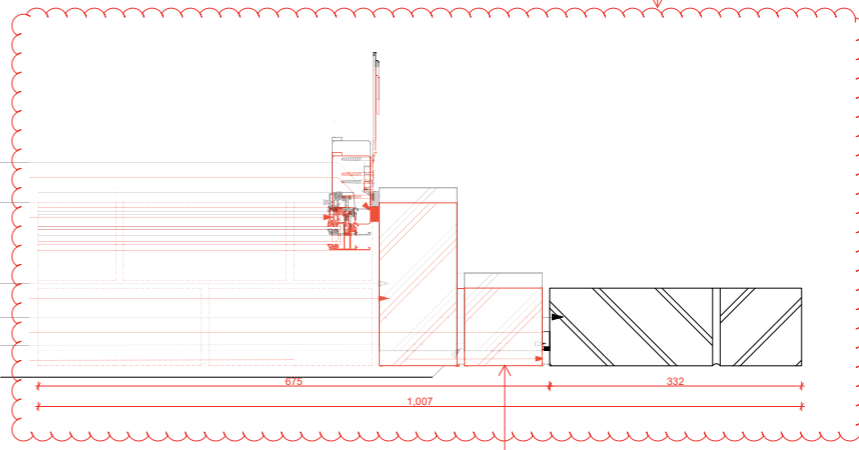
CLAY FACING BRICKWORK F10/111

SEALANT JOINT TO ACCOMMODATE DIFFERENTIAL MOVEMENT F30/610A

BUCKET HANDLE POINTING F10/665

L10/400A FIXED WINDOW

L10/400A WINDOW CILL



F10/113 BRICKWORK NOW FLUSH

Reviewed by LD
24/11/2022 12:42:38

Rev	Description	Date	By	Chk
001	FOR CONSTRUCTION	12/04/2022	ML	RB

Structural Consultant Services Consul
AECOM ARI
Cost Consultant
EQUALS CONSULTING
Project Title
BEDFORD PASSAGE DEVELOPMENT
BEDFORD HOUSE:
MRI SUITE (D1), COMMERCIAL (B1)
BEDFORD COURT:
AFFORDABLE HOUSING (C3)
Client
MIDDLESEX ANNEXE LLP
Drawing Title
SAMPLE PANEL 02

Project Number Revision
LD15 078.00 C1
Drawing Number
BPD-LDW-NB-ZZ-DR-A-251302
Scale @ A1
1:5
21/08/20
Architects
J.J. FAWCETT

Brick Panel 3

Brick Panel 03

Product reference: Wienerberger Staffordshire Smooth Blue Perforated facing brick.

- Reaction to Fire: Euroclass A1
- Configuration: Perforated
- Compressive strength: Greater than or equal to 75N/mm²
- Freeze/Thaw Resistance: F2
- Work Sizes (length x width x height): 215x102.5x65 mm
- Tolerance category: T2/R1
- Density- Gross Dry: 1800Kg/m³
- Thermal Conductivity: P=90% 0.84W/mK
- Water vapour permeability: tabulated from BS EN 1745: 5/15µ
- Water absorption: less than or equal to 7%
- Initial rate of water absorption: Min. 0.0 Max 0.5 kg/(m².min)
- Active soluble salts: S2
- Special shapes: To BS 4729, types as shown on drawings; PS.2.1 pistol stretchers at masonry support angles; brick slips to steel lintols as clause 755A.

Manufacturer: Wienerberger UK
Kingsbury Works, Rush Ln, Dosthill, Tamworth B77 1LT

Mortar Colour Dark Grey

Approved planning scheme No change compared to approved planning drawings.

Area of brickwork to be used: As per planning application drawings. staffordshire smooth blue bricks to be used for levels 01, 02 & 03.

Sample Panel: Exceeds 1m x 1m requirement as per elevation. Part window could not be procured and a small window was used to illustrate head and cill jamb junctions.



Sample panel 03 - illustrating White smooth facing brick. Dark coloured brick trim and panels are Black smooth brick, see sample panel 04 for manufacture reference.



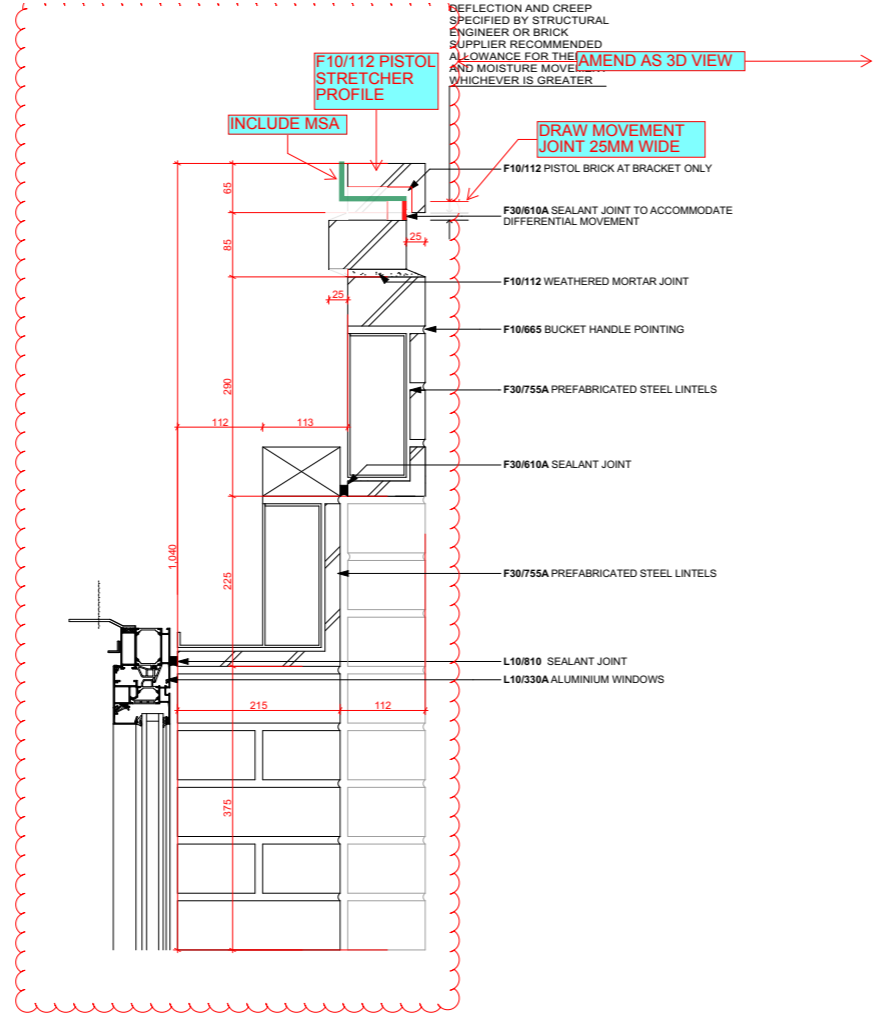
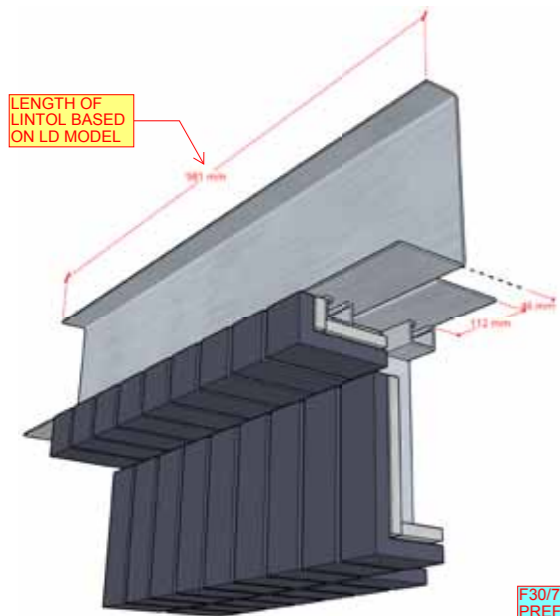
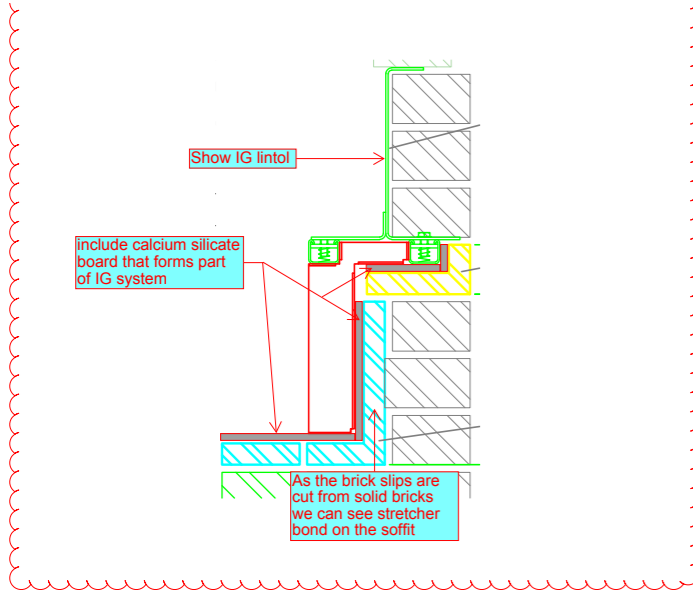
Detail of white smooth facing brickwork



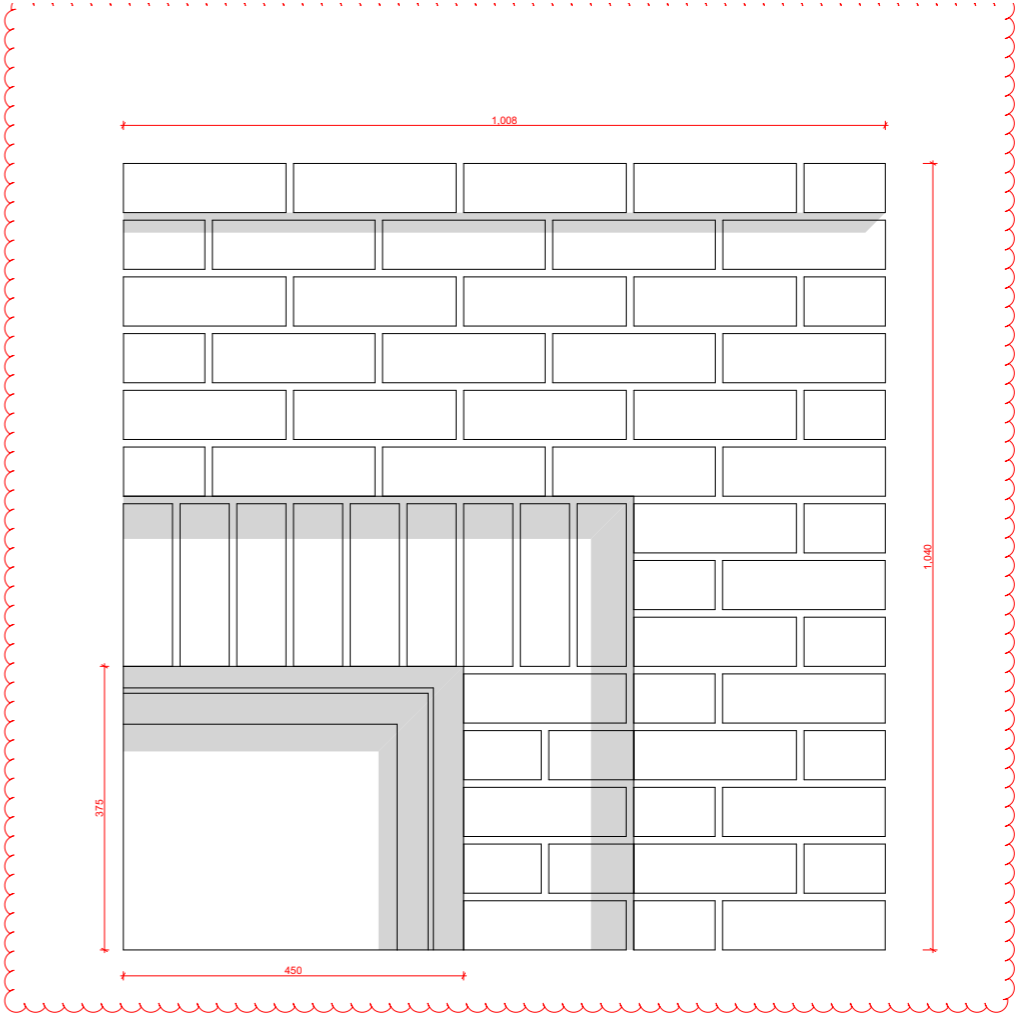
White smooth facing bricks used for residential upper floors brickwork

Approved scheme visuals

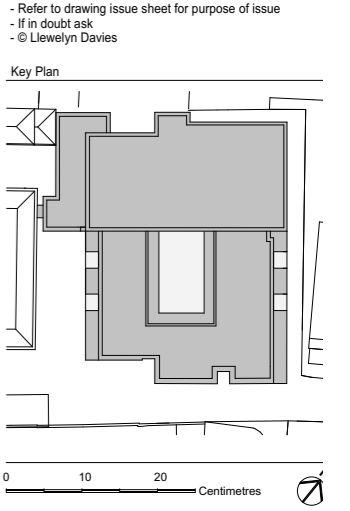
Brick Panel 3



D01 SECTION 1:5

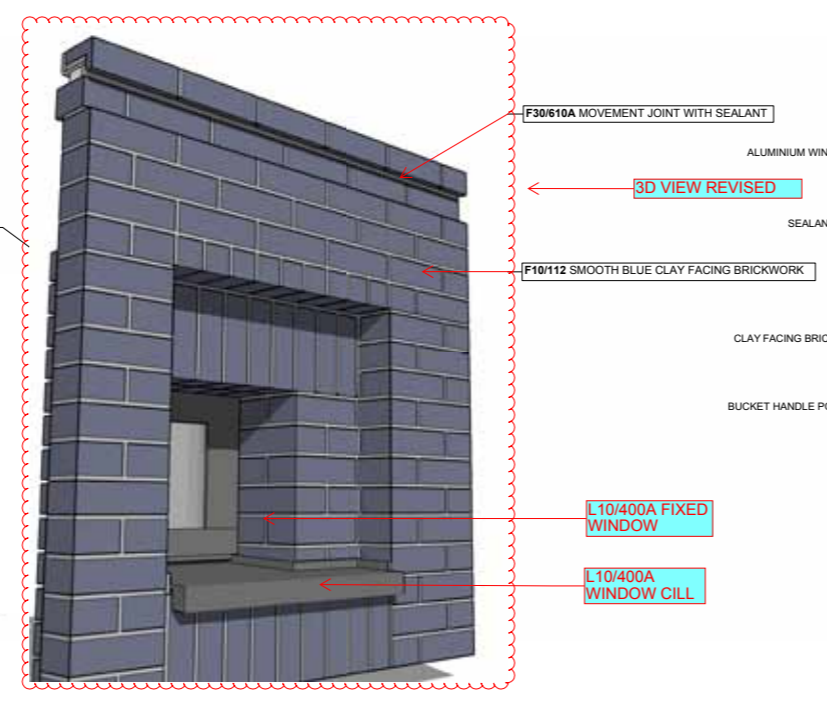
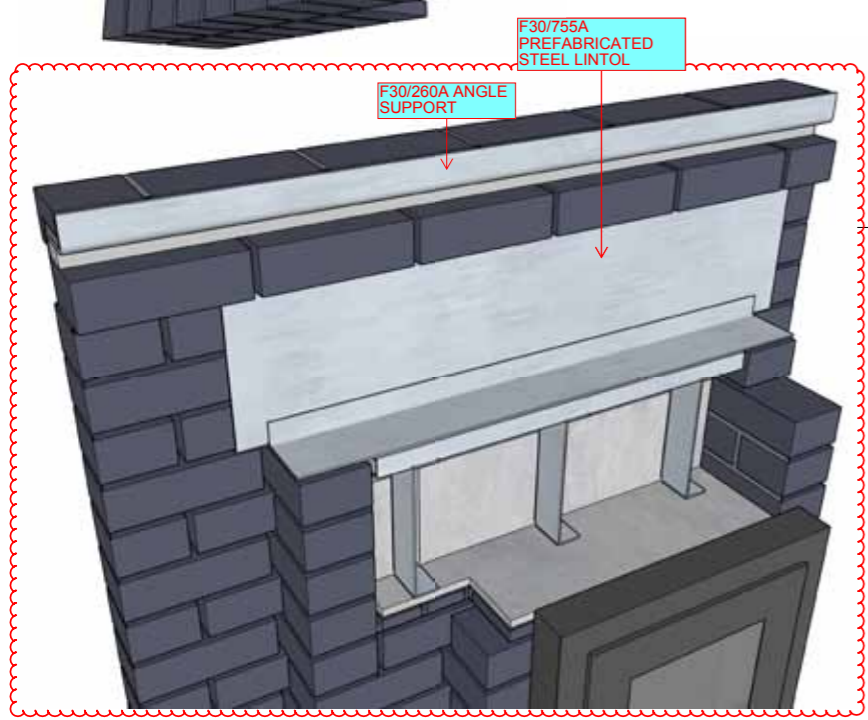


D02 ELEVATION 1:5

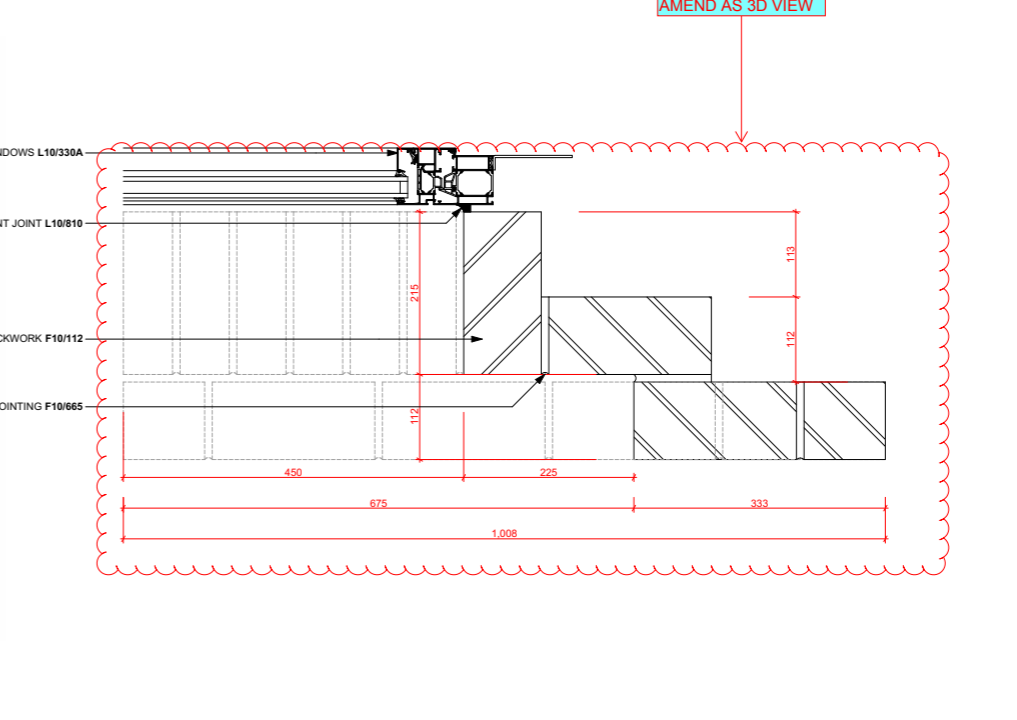


Notes:

- AS DISCUSSED WITH THE CONTRACTOR, BACKGROUND FIXING OF WINDOW FRAME AND STABILISING OF BRICKWORK BE REVIEWED AT A SITE WORKSHOP



D03 3D VIEW



D04 JAMB 1:5

D05 3D VIEW

Reviewed by LD
24/11/2022 14:29:14

Reviewed by LD
23/11/2022 19:42:49

Rev	Description	Date	By
001	FOR CONSTRUCTION	12.04.2022	MB

Structural Consultant Services Consu

AECOM
Cost Consultant AR

EQUALS CONSULTING

Project Title
BEDFORD PASSAGE DEVELOPMENT
BEDFORD HOUSE:
MRI SUITE (D1), COMMERCIAL (B1)
BEDFORD COURT:
AFFORDABLE HOUSING (C3)
Client
MIDDLESEX ANNEXE LLP

Drawing Title
SAMPLE PANEL 03

Project Number
LD15 078.00 C

Drawing Number
BPD-LDW-NB-ZZ-DR-A-251303

Scale @ A1
1:5

Architects
Middlesex Annexe - Condition 23g
21/08/2022

T.J.F.W.F.I.Y.N

Brick Panel 4

Brick Panel 04

Product reference: Wienerberger Avenue Black Smooth facing brick.

Reaction to Fire: Euroclass A1
Configuration: Perforated
Compressive strength: Greater than or equal to 50N/mm²
Freeze/Thaw Resistance: F2
Work Sizes (length x width x height): 215x102.5x65 mm
Tolerance category: T2/R2
Density- Gross Dry: 1800Kg/m³
Individual dry brick weight (kg): 2.5
Thermal Conductivity: P=90% 0.58W/mK
Water vapour permeability: tabulated from BS EN 1745: 5/15μ
Water absorption: Less than or equal to 6%
Active soluble salts: S2
Initial rate of water absorption: Min. 0.0 Max. 0.8 kg/(m².min)

Manufacturer: Wienerberger UK
Kingsbury Works, Rush Ln, Dosthill, Tamworth B77 1LT

Mortar Colour Dark Grey

Approved planning scheme No change compared to approved planning drawings.

Area of brickwork to be used: As per planning application drawings. Avenue Black Smooth bricks to be used for levels 04 - 07.

Sample Panel: Exceeds 1m x 1m requirement as per elevation. Part window could not be procured and a small window was used to illustrate head and cill jamb junctions.



Sample panel 03 - illustrating White smooth facing brick. Dark coloured brick trim and panels are Black smooth brick, see sample panel 04 for manufacture reference.



White smooth facing bricks used for residential upper floors brickwork

Approved scheme visuals

Brick Panel 5



Sample panel 05 - illustrating White glazed facing brick.



Detail of white glazed facing brickwork

Brick Panel 05

Product reference: Wienerberger White Glazed Facing brick.

Type: Wirecut- **Facing description:** Glazed- **Dry brick weight (kg):** 2.7- **Void (%)**: 16-21- **Active soluble salts:** S2- **Reaction to Fire:** Euroclass A1

Configuration: Vertically Perforated; except at locations referred to in clause 109.-

Compressive strength mean Value: 50N/mm²-

Category: Refer to Manufacturer-

Freeze/Thaw Resistance: F2- **Work Sizes (length x width x height):** 215x102x65 mm-

Tolerance category: T2 R1- **Density- Gross Dry:** 1700Kg/m³- **Thermal Conductivity:** 0.55W/mk-

Water vapour permeability: tabulated from BS EN 1745: 5/15µ- **Water absorption**

Manufacturer: Wienerberger UK
Kingsbury Works, Rush Ln, Dosthill, Tamworth B77 1LT

Mortar Colour Dark Grey

Approved planning scheme No change compared to approved planning drawings.

Area of brickwork to be used: As per planning application drawings. Glazed bricks to be used for the main residential entrance and floors above.

Sample Panel: Exceeds 1m x 1m requirement as per elevation. Part window could not be procured and a small window was used to illustrate head and cill jamb junctions.

LLEWELYN
DAVIES