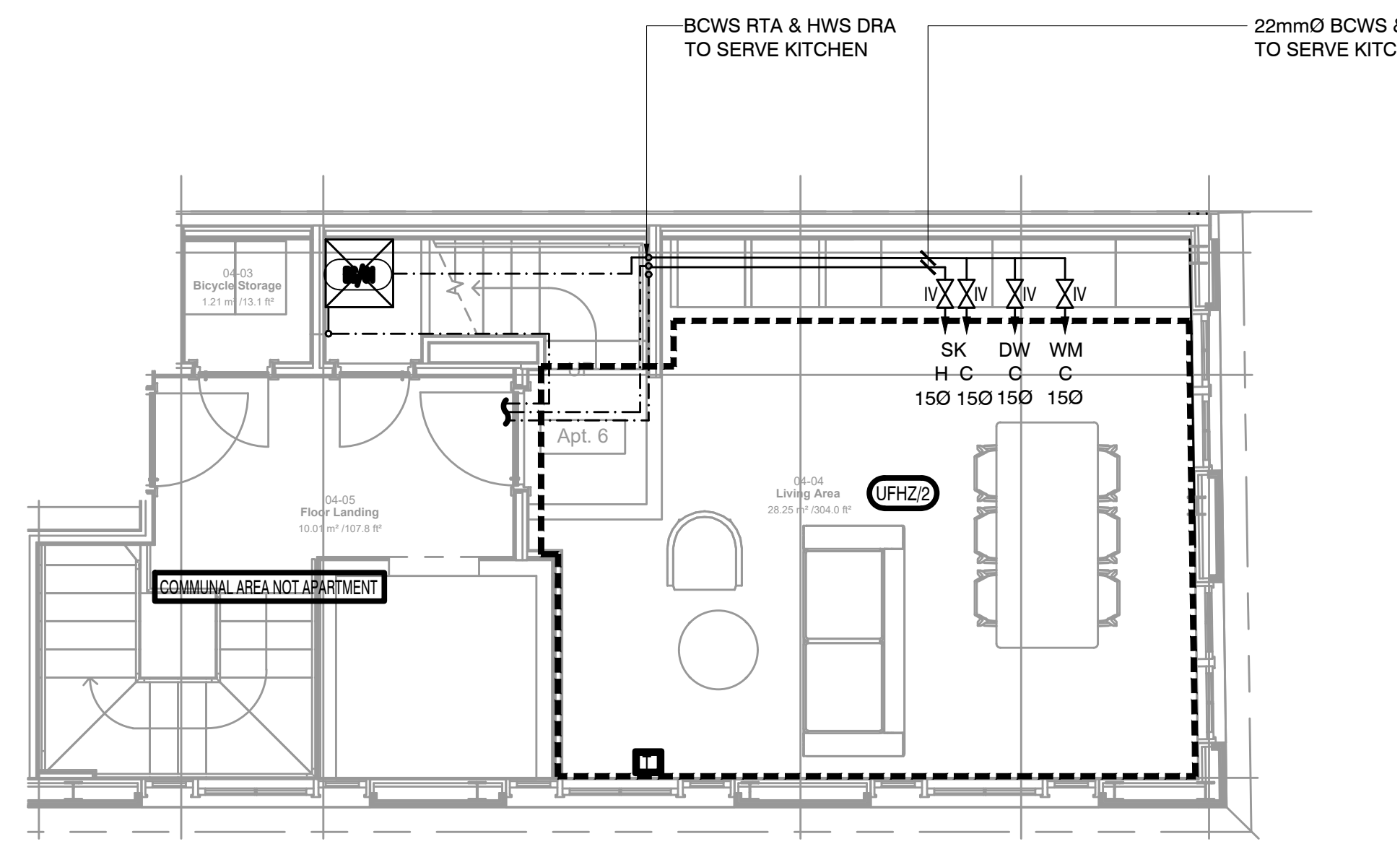
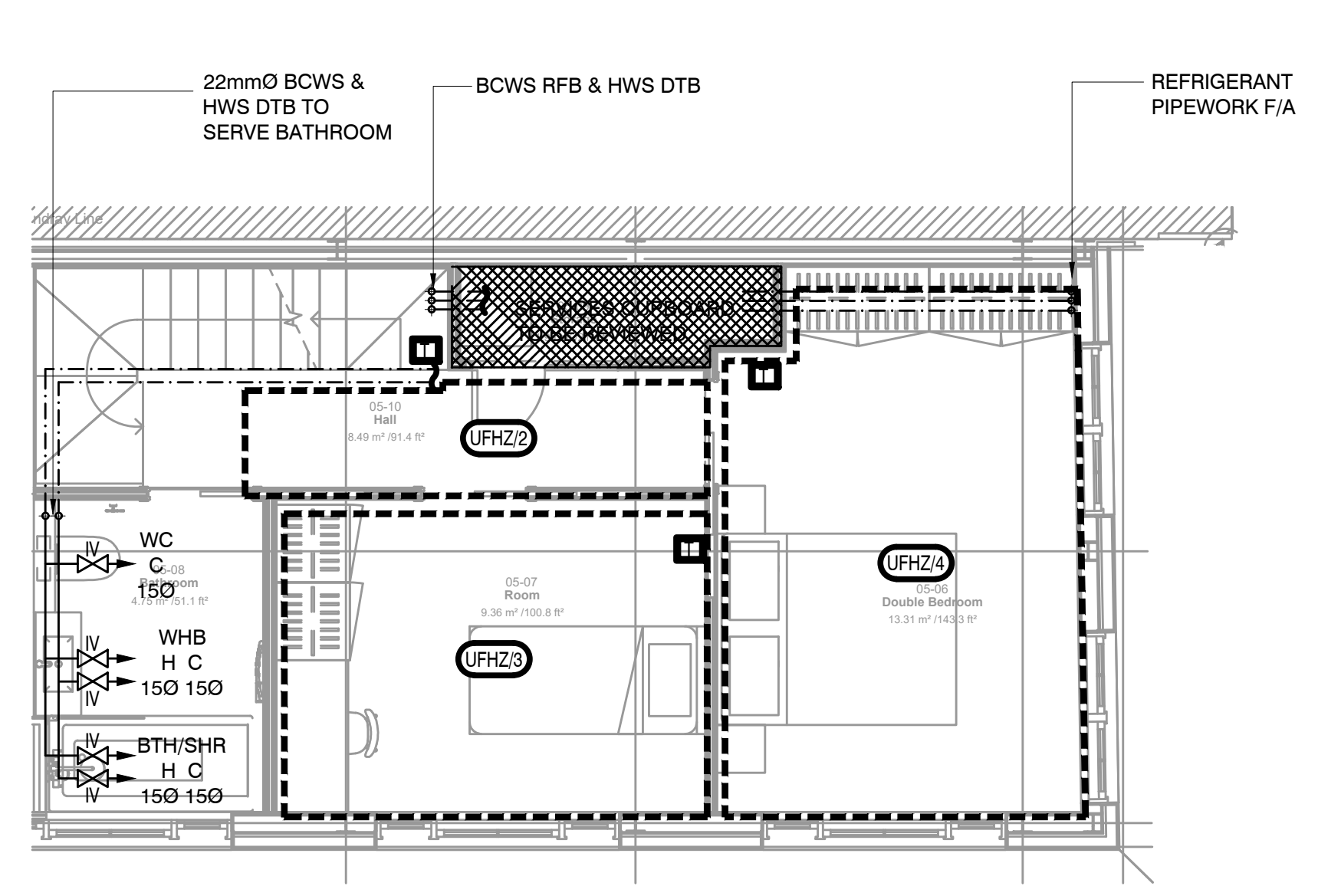


BATHROOM/SOWER ROOMS TO BE C/W WITH ELECTRIC UNDERFLOOR HEATING AND ELECTRIC HEATED TOWEL RAIL (FINAL LOCATION TO BE CONFIRMED BY ARCHITECTS).



4TH FLOOR



5TH FLOOR

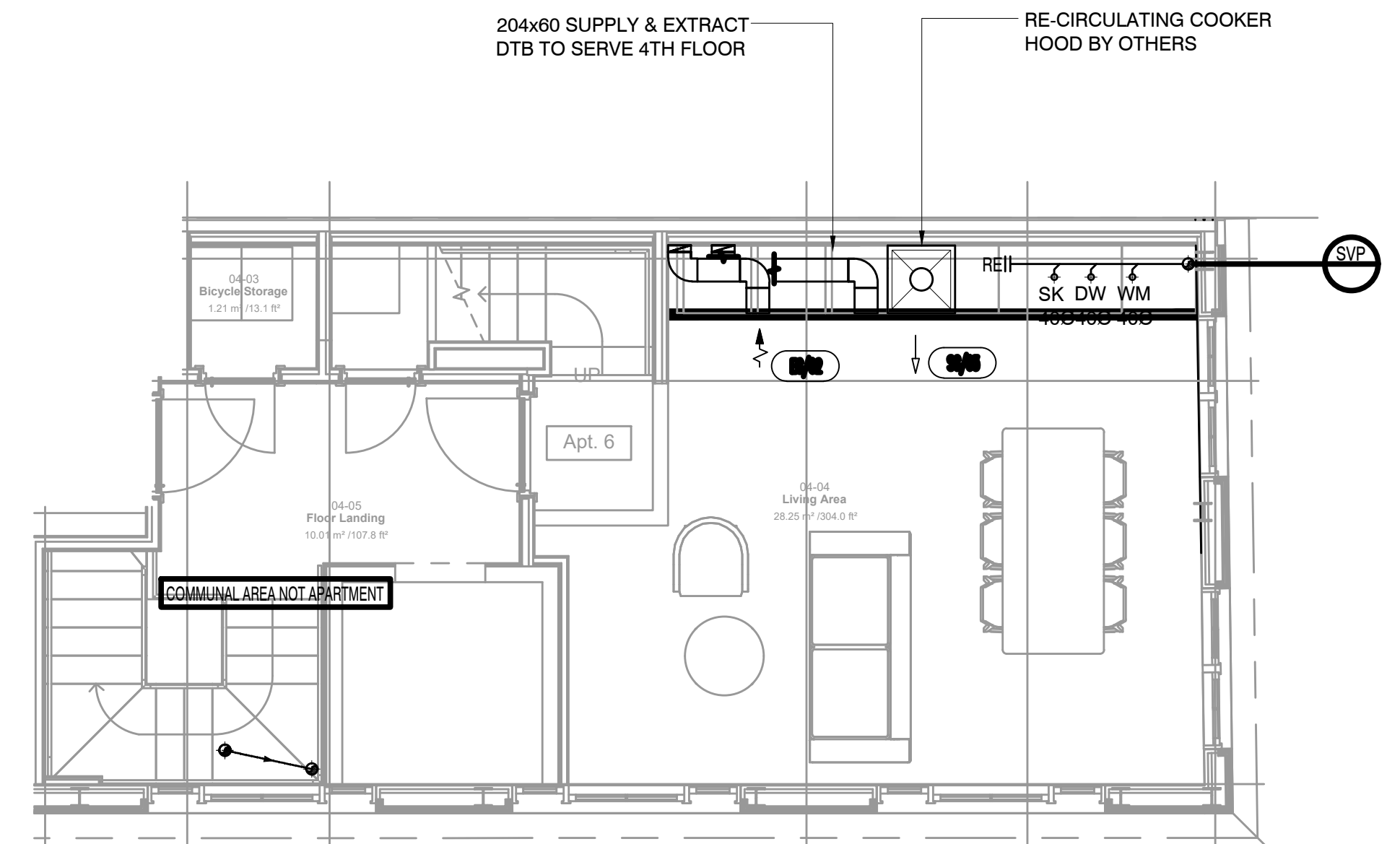
HEATING & HOT/COLD WATER SERVICES LAYOUT

- LEGEND:**
- BCWS - BOOSTED COLD WATER SERVICE
 - HWS - HOT WATER SERVICE
 - HWC - HOT WATER CYLINDER
 - TPRV - TEMPERATURE & PRESSURE RELIEF VALVE
 - DC - DRAIN COCK
 - GC - GAS COCK
 - IV - ISOLATING VALVE
 - LSV - LOCKSHIELD VALVE
 - SC - STOPCOCK
 - TBV - THERMOSTATIC BLENDING VALVE
 - TRV - THERMOSTATIC RADIATOR VALVE
 - WHV - WHEEL HEAD VALVE
 - PRV - PRESSURE RELIEF VALVE
 - AECV - ADDITIONAL GAS EMERGENCY CHECK VALVE
 - LL - LOW LEVEL
 - HL - HIGH LEVEL
 - DTLL - DROP TO LOW LEVEL
 - RTLL - RISE TO LOW LEVEL
 - RTA - RISE TO ABOVE
 - RFB - RISE FROM BELOW
 - DTB - DROP TO BELOW
 - DTBF - DROP TO BELOW FLOOR
 - RTCV - RISE TO CEILING VOID
 - FA/FB - FROM ABOVE/ FROM BELOW
 - TA/TB - TO ABOVE/ TO BELOW
 - POE - POINT OF ENTRY
 - HTG F&R (1) - HEATING FLOW AND RETURN
 - (2) - HEATING ZONE 1

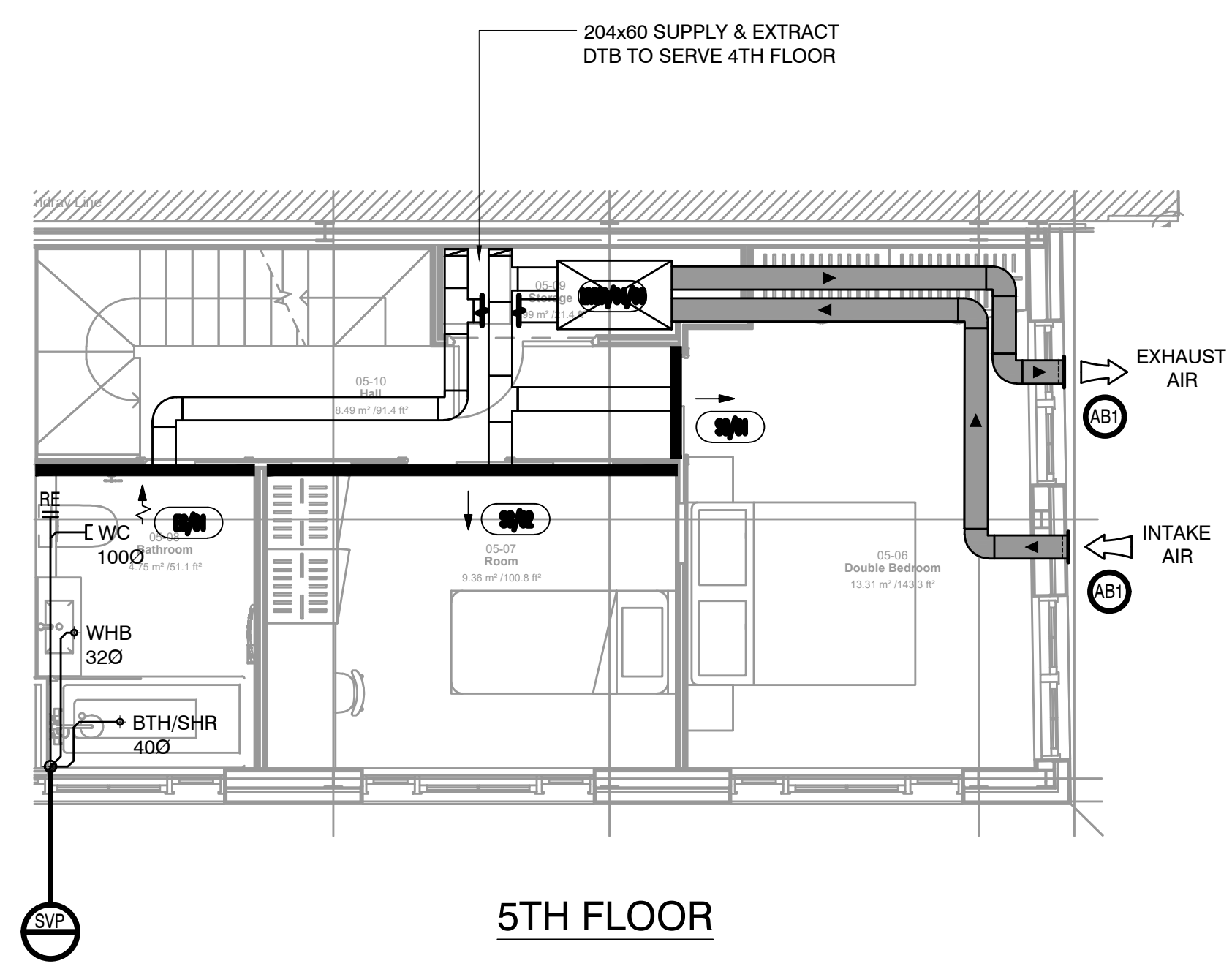
- ELECTRIC TOWEL RADIATOR
- THERMOSTATIC BLENDING VALVE
- THERMOSTATIC MIXING VALVE
- UNDERFLOOR HEATING TEMP CONTROLLER
- LOW LEVEL UNDERFLOOR HEATING MANIFOLD WITHIN SERVICES CUPBOARD SEE TYPICAL CUPBOARD FOR DETAILS (BATHROOMS TO HAVE WET FLOOR UFH OPTION)
- UFHZ = UFH ZONE REF
- FX = FLAT No
- 01 = ZONE
- WET UNDERFLOOR HEATING
- PIPEWORK RISE OR DROP
- PIPEWORK AT LOW LEVEL
- PIPEWORK WITHIN FLOOR VOID
- PIPEWORK AT HIGH LEVEL
- PIPEWORK WITHIN CEILING VOID
- DIRECTION OF FLOW

- GENERAL NOTES**
- THIS DRAWING MAY NOT CONTAIN ALL DETAILS OF ALL SYSTEMS, MATERIALS, ANCILLARY ITEMS, ETC. SHOWN ON THIS DRAWING NECESSARY TO DESCRIBE A COMPLETE INSTALLATION. PROVIDE ALL DETAILS OF ALL SYSTEMS, MATERIALS, ANCILLARY ITEMS, ETC. NECESSARY TO PROVIDE, INSTALL, COMMISSION AND SET TO WORK A COMPLETE INSTALLATION THAT MEETS THE SPECIFIED DESIGN CRITERIA AND CAN BE MAINTAINED IN ACCORDANCE WITH THE DEFINED STANDARDS, GOOD INDUSTRY PRACTICE AND MANUFACTURERS' RECOMMENDATIONS AND INSTRUCTIONS.
 - ALL IDENTIFIED CONFLICTS BETWEEN THIS DRAWING AND OTHER DRAWINGS AND SPECIFICATIONS ARE TO BE BROUGHT TO THE ATTENTION OF THE DESIGN TEAM FOR CLARIFICATION AND RESOLUTION.
 - ALL IDENTIFIED ANOMALIES THAT EXIST ON THIS DRAWING ARE TO BE BROUGHT TO THE ATTENTION OF THE ENGINEER FOR CLARIFICATION AND RESOLUTION.
 - THE COST OR LIABILITY OF ANY CONFLICTS OR ANOMALIES IN THE DRAWINGS WITH OTHER TENDER OR CONTRACT DOCUMENTS NOT BROUGHT TO THE ATTENTION OF THE DESIGN TEAM AND ENGINEER FOR CLARIFICATION AND RESOLUTION ARE DEEMED TO BE ACCEPTED AND INCLUDED BY THE CONTRACTOR.
 - THE CONTENT OF THIS DRAWING IS INTENDED TO COMMUNICATE THE DESIGN INTENT OF THE BUILDING SERVICES SYSTEM(S) SHOWN ON THIS DRAWING.
 - THE CONTRACTOR IS REFERRED TO THE MECHANICAL SERVICES SPECIFICATION FOR INSTRUCTION ON THE APPLICATION OF ALL CONTRACTOR DESIGN (WHEN REQUIRED) AND INSTALLATION STANDARDS, REGULATIONS, CODES OF PRACTICE, ETC.
 - ALL SERVICE ROUTES, EQUIPMENT AND PLANT LOCATIONS AND MAINTENANCE SPACE SHOWN ON THIS DRAWING ARE INDICATIVE AND FOR INFORMATION ONLY. THE FABRICATION, WORKING OR INSTALLATION DRAWINGS SHALL DEFINE ALL REQUIRED SERVICE ROUTES, EQUIPMENT AND PLANT LOCATIONS AND MAINTENANCE SPACE IN ACCORDANCE WITH DEFINED STANDARDS, GOOD INDUSTRY PRACTICE AND MANUFACTURERS' RECOMMENDATIONS AND INSTRUCTIONS.
 - THIS DRAWING IS NOT A CONSTRUCTION, FABRICATION OR INSTALLATION DRAWING. THE CONTRACTOR IS REFERRED TO THE MECHANICAL SERVICES SPECIFICATION FOR INSTRUCTION ON THE PREPARATION AND CO-ORDINATION OF CONSTRUCTION, FABRICATION, WORKING OR INSTALLATION DRAWINGS.
 - ALL PENETRATIONS THROUGH FLOOR SLABS, COLUMNS, BEAMS, BRACING AND LOAD BEARING WALLS ARE TO BE AGREED WITH THE STRUCTURAL ENGINEER PRIOR TO THE FORMATION OF SAID PENETRATION.
 - FOR FINAL SERVICES SETTING OUT AND CO-ORDINATION, THE CONTRACTOR SHALL REFER TO THE ARCHITECTS LATEST INFORMATION.

SUFFICIENT SPACE TO BE LEFT BEHIND COOKER FOR ROUTE OF DRAINAGE PIPEWORK. 650mm DEEP REQUIRED FOR INSTANCES OF DRAINAGE PASSING COOKERS.

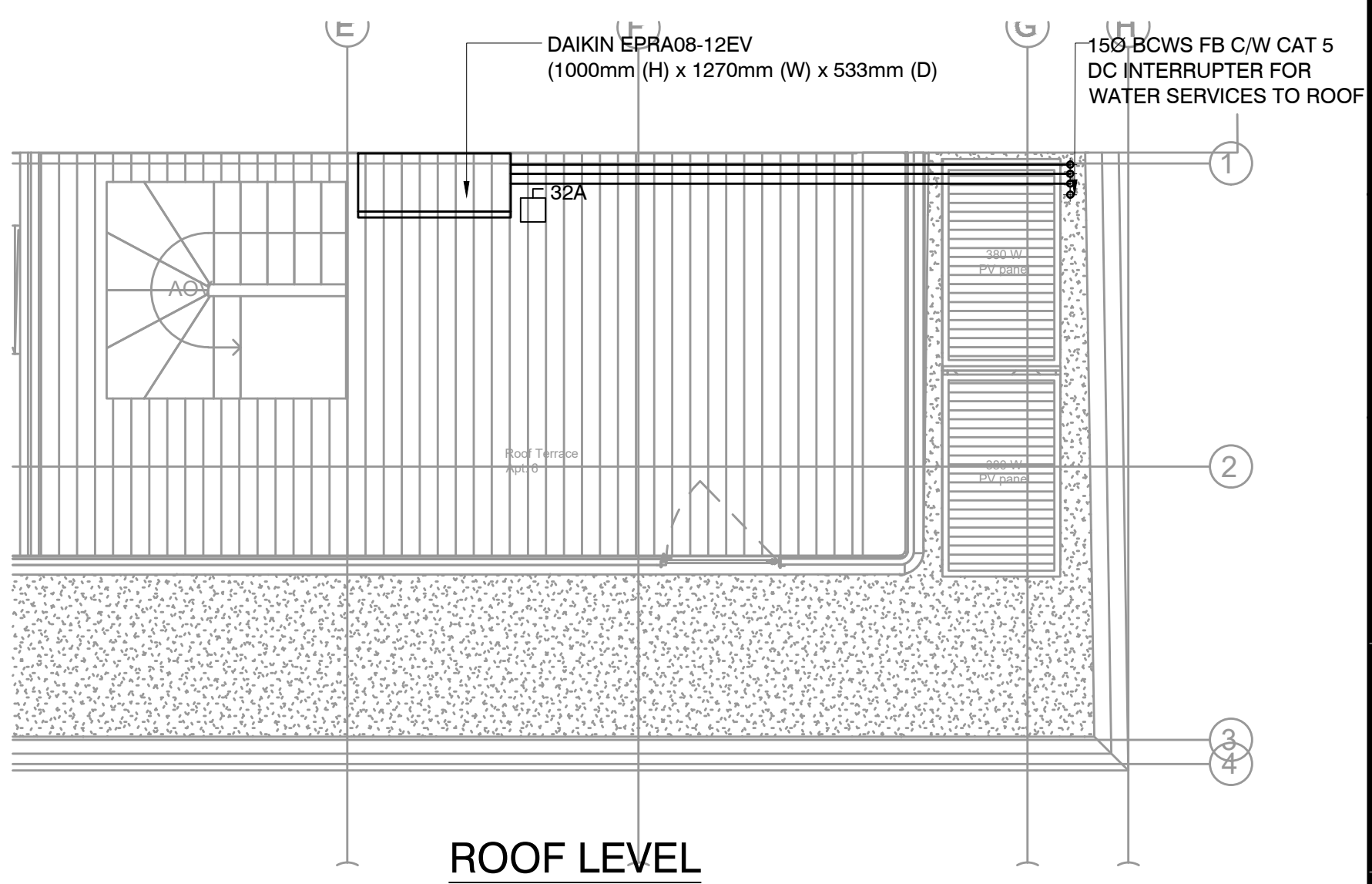


4TH FLOOR



5TH FLOOR

VENTILATION & DRAINAGE SERVICES LAYOUT



ROOF LEVEL

FIRE COLLARS REQUIRED AS DUCTS PASS THROUGH FIRE COMPARTMENTS (SEE FIRE STRATEGY DRAWINGS & REPORT).
SPRINKLER DESIGN TO BE COMPLETED BY SPECIALIST.

STAGE 3

| | | |
|-----|--------|--|
| A | JAN.23 | STAGE 3 PACKAGE UPDATED TO COMMENTS RECEIVED |
| 0 | 02.22 | STAGE 3 ISSUE |
| Rev | Date | Description |

TPS.
Taylor Project Services LLP
No.1 Cornhill
London EC3V 3ND
Tel 020 7743 6602
www.taylorprojectservices.com

ELLERIC

Project
18 STUKELEY STREET
LONDON
WC2B 5LR

Drawing Title
APARTMENT 6
FOURTH, FIFTH & ROOF LEVEL
MECHANICAL SERVICES LAYOUT

Scale 1:50@A1 Date SEP.22

Drawn D.F. Checked G.P.

Drawing Status
STAGE 3

Revision 0 A

Drawing No. A1/TPS/18SS/A6/4&5/M

