

GENERAL NOTES.

© Buckley Gray Yeoman Limited

All dimensions to be checked on site prior to commencement of any works, and/or preparation of any shop drawings.

Sizes of and dimensions to any structural elements are indicative only. See structural engineers drawings for actual sizes / dimensions.

Sizes of and dimensions to any service elements are indicative only. See service engineers drawings for actual sizes and dimensions.

This drawing to be read in conjunction with all other Architect's drawings, specifications and other Consultants' information.

All proprietary systems shown on this drawing are to be installed strictly in accordance with the Manufacturers/Suppliers recommended details.

Any discrepancies between information shown on this drawing and any other contract information or manufacturers/suppliers recommendations is to be brought to the attention of the Architect

DO NOT SCALE FROM THIS DRAWING.

NOTES.

- Material Key**
- 1 Existing brickwork
 - 2 Existing windows with stone surrounds
 - 3 Existing render
 - 4 Existing metal cladding
 - 5 New metal cladding
 - 6 New glazed door/window with metal coloured frame
 - 7 Coloured metal panel
 - 8 Coloured metal gates
 - 9 New reconstituted stone
 - 10 Metal louvered plant screen
 - 11 New glazed rooflights
 - 12 New glazed windows / doors, with new feature coloured metalwork vent panels at high level, and coloured metal surround
 - 13 Existing brickwork treated with pale mineral colourwash

PL04 16/12/22 Non Material Amendments LH
 REV. DATE NOTE DRAWN



CLIENT
PATRIZIA

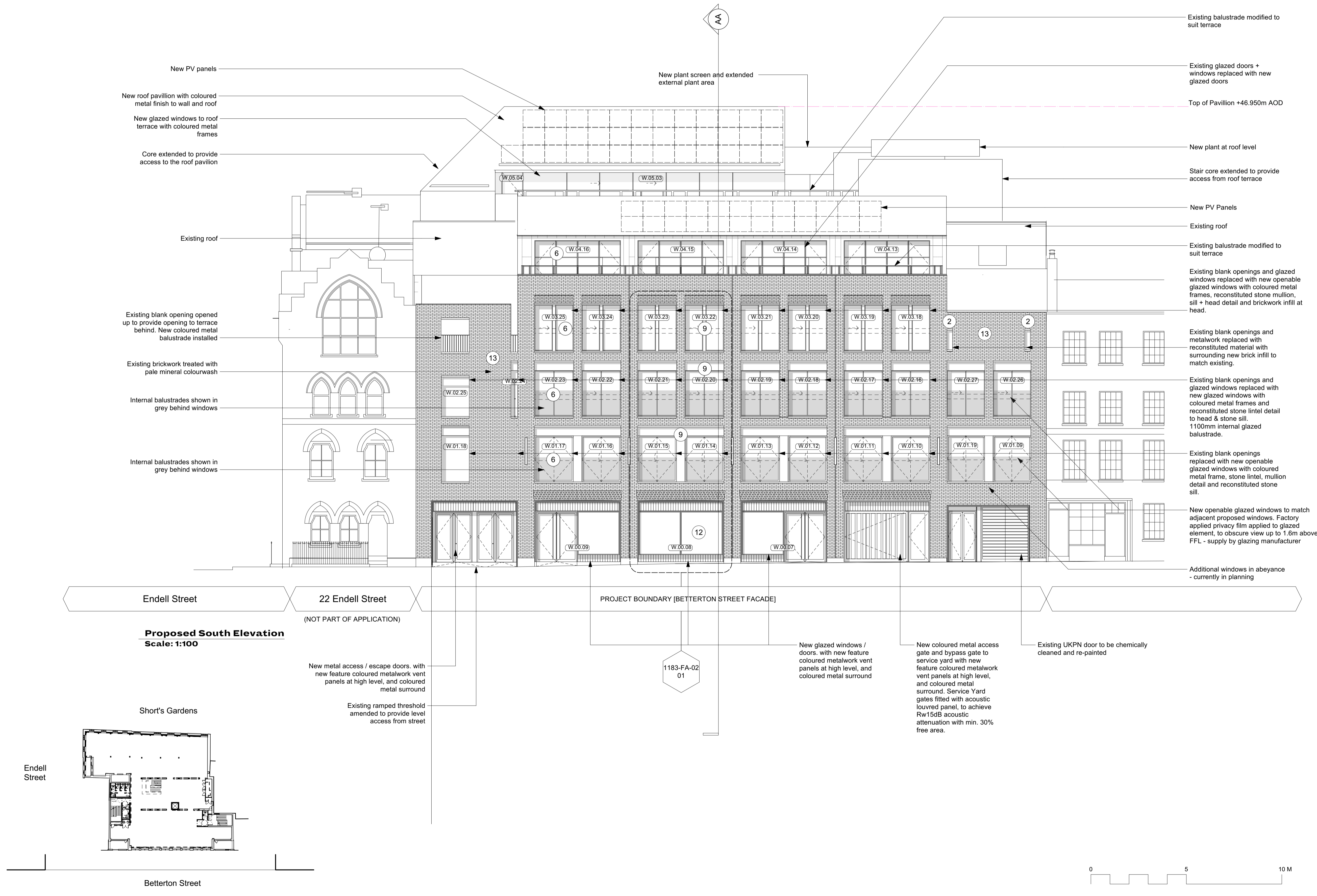
PROJECT
24 Endell Street

DRAWING
**Proposed South Elevation
 Betterton Street**

SCALE DATE
**1:100 @ A1 Oct. 2021
 (1:200 @ A3)**

STATUS APPROVED
PLANNING CS

DWG No. REVISION
1183-PL-GE-02 PL04



New PV panels

New roof pavilion with coloured metal finish to wall and roof

New glazed windows to roof terrace with coloured metal frames

Core extended to provide access to the roof pavilion

Existing roof

Existing blank opening opened up to provide opening to terrace behind. New coloured metal balustrade installed

Existing brickwork treated with pale mineral colourwash

Internal balustrades shown in grey behind windows

Internal balustrades shown in grey behind windows

New plant screen and extended external plant area

Existing balustrade modified to suit terrace

Existing glazed doors + windows replaced with new glazed doors

Top of Pavilion +46.950m AOD

New plant at roof level

Stair core extended to provide access from roof terrace

New PV Panels

Existing roof

Existing balustrade modified to suit terrace

Existing blank openings and glazed windows replaced with new openable glazed windows with coloured metal frames, reconstituted stone mullion, sill + head detail and brickwork infill at head.

Existing blank openings and metalwork replaced with reconstituted material with surrounding new brick infill to match existing.

Existing blank openings and glazed windows replaced with new glazed windows with coloured metal frames and reconstituted stone lintel detail to head & stone sill. 1100mm internal glazed balustrade.

Existing blank openings replaced with new openable glazed windows with coloured metal frame, stone lintel, mullion detail and reconstituted stone sill.

New openable glazed windows to match adjacent proposed windows. Factory applied privacy film applied to glazed element, to obscure view up to 1.6m above FFL - supply by glazing manufacturer

Additional windows in abeyance - currently in planning

Endell Street

22 Endell Street (NOT PART OF APPLICATION)

**Proposed South Elevation
 Scale: 1:100**

PROJECT BOUNDARY [BETTERTON STREET FACADE]

1183-FA-02
 01

New glazed windows / doors, with new feature coloured metalwork vent panels at high level, and coloured metal surround

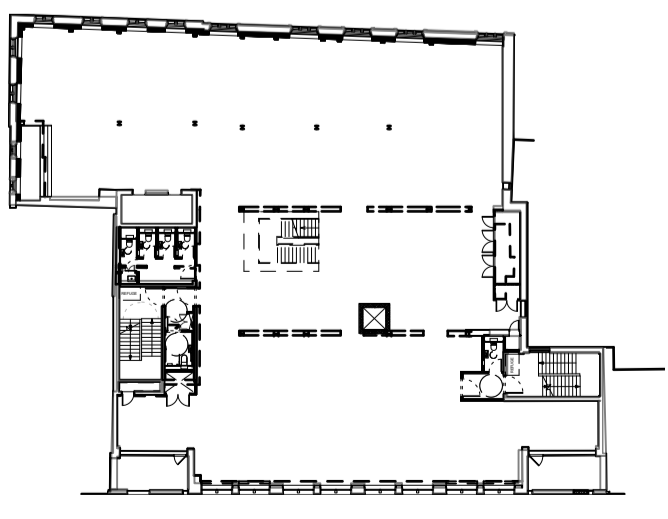
New coloured metal access gate and bypass gate to service yard with new feature coloured metalwork vent panels at high level, and coloured metal surround. Service Yard gates fitted with acoustic louvered panel, to achieve Rw15dB acoustic attenuation with min. 30% free area.

Existing UKPN door to be chemically cleaned and re-painted

New metal access / escape doors, with new feature coloured metalwork vent panels at high level, and coloured metal surround

Existing ramped threshold amended to provide level access from street

Short's Gardens



Betterton Street

