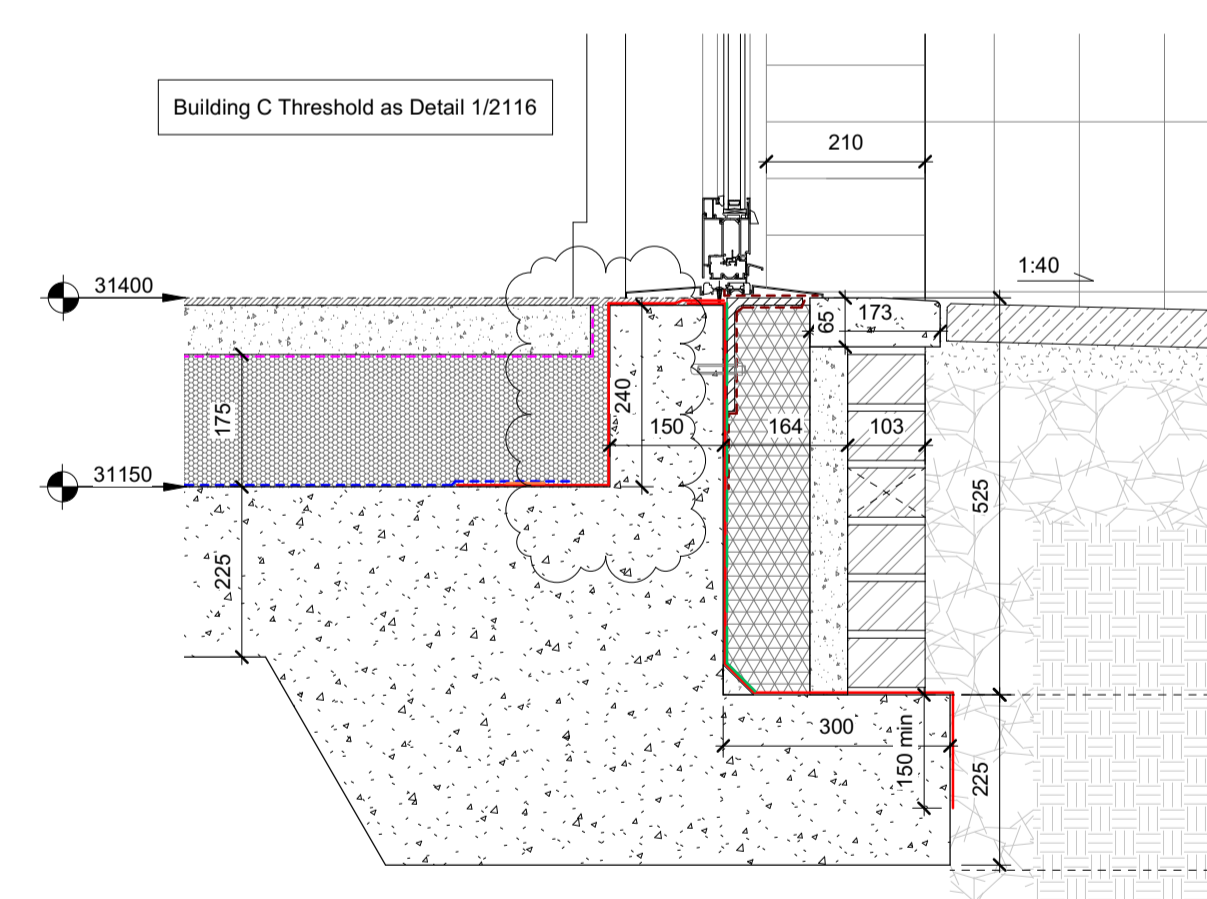


**1** Ground Floor Entrance Building B  
1 : 10

**2** Ground Floor External Wall Building B Lobby  
1 : 10

**3** Canopy over Entrance to Building C  
1 : 10



**4** Entrance Threshold Building C  
1 : 10

Rev	Date	Revision Details	Dr	Ch
P03	19.10.22	Updated to RIW requirements	AL	PA
P02	14.09.22	VE Changes incorporated	AL	PA
P01	25.01.22	Preliminary Issue	AL	DU

**ECE Architecture**  
www.ecearchitecture.com

London: 76 Great Suffolk Street, London, SE1 0BL  
 T 020 7928 2773 E london@ecearchitecture.com  
 Sussex: Brooklyn Chambers, 11 Goring Road, Worthing, West Sussex, BN12 4AP  
 T 01903 248777 E sussex@ecearchitecture.com  
 Bristol: Westworks, Beacon Tower, Colston Street, Bristol, BS1 4XE  
 T: 0117 214 1101 E bristol@ecwestworks.com

**Vistry Partnerships**

Job Title  
Belmont Street, Camden

Drawing Title  
External Envelope Section Details - Sheet 7

Scale  
1:10 @ A1 / 1:20 @ A3

Project Originator Zone Level Type Displ. Drg. No. Rev  
LD504- ECE - ZZ - ZZ - DR - A - 2116P03

Drawn Checked Date  
AL DU 06/01/22

Status  
S3 - Suitable For Review & Comment