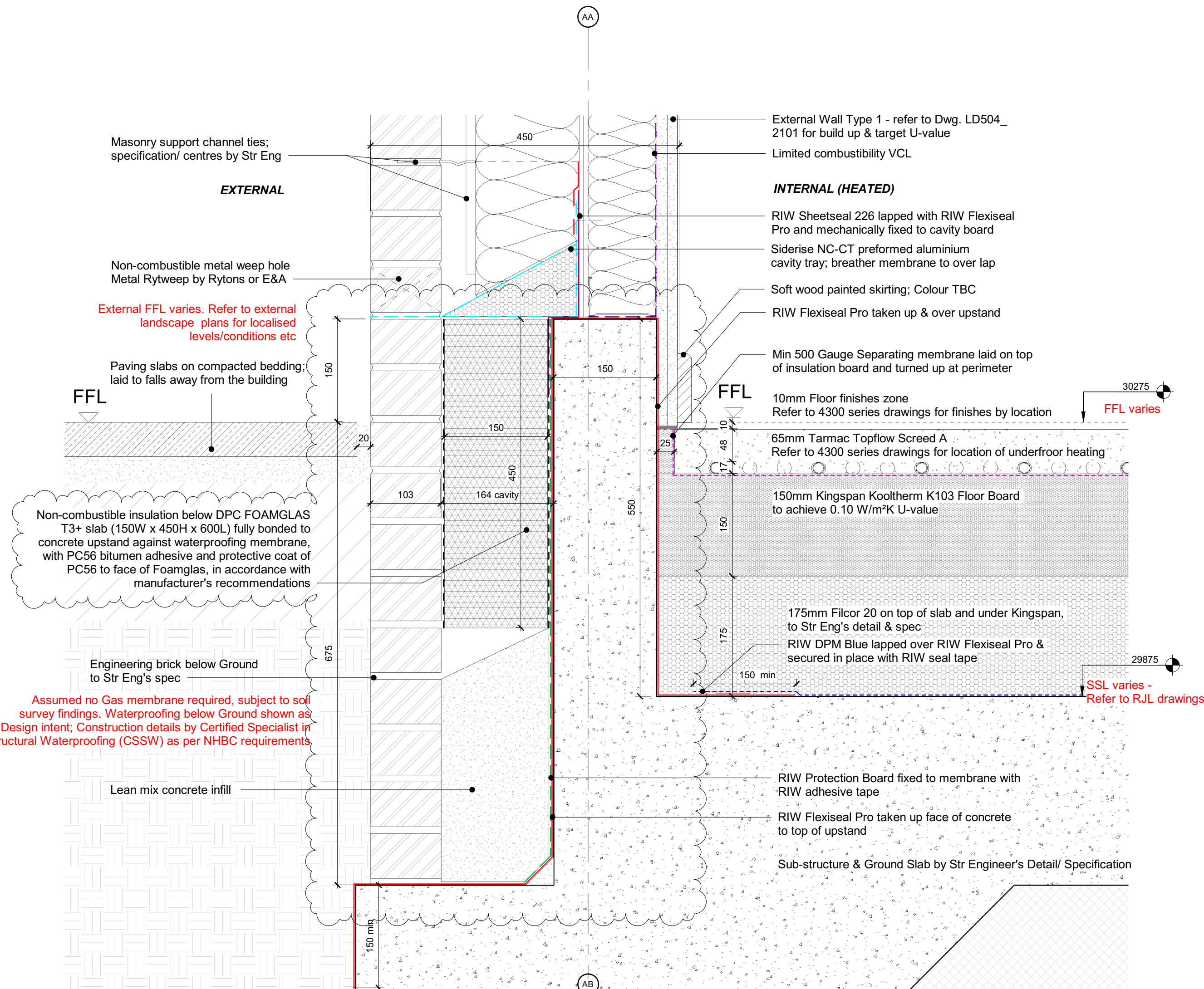
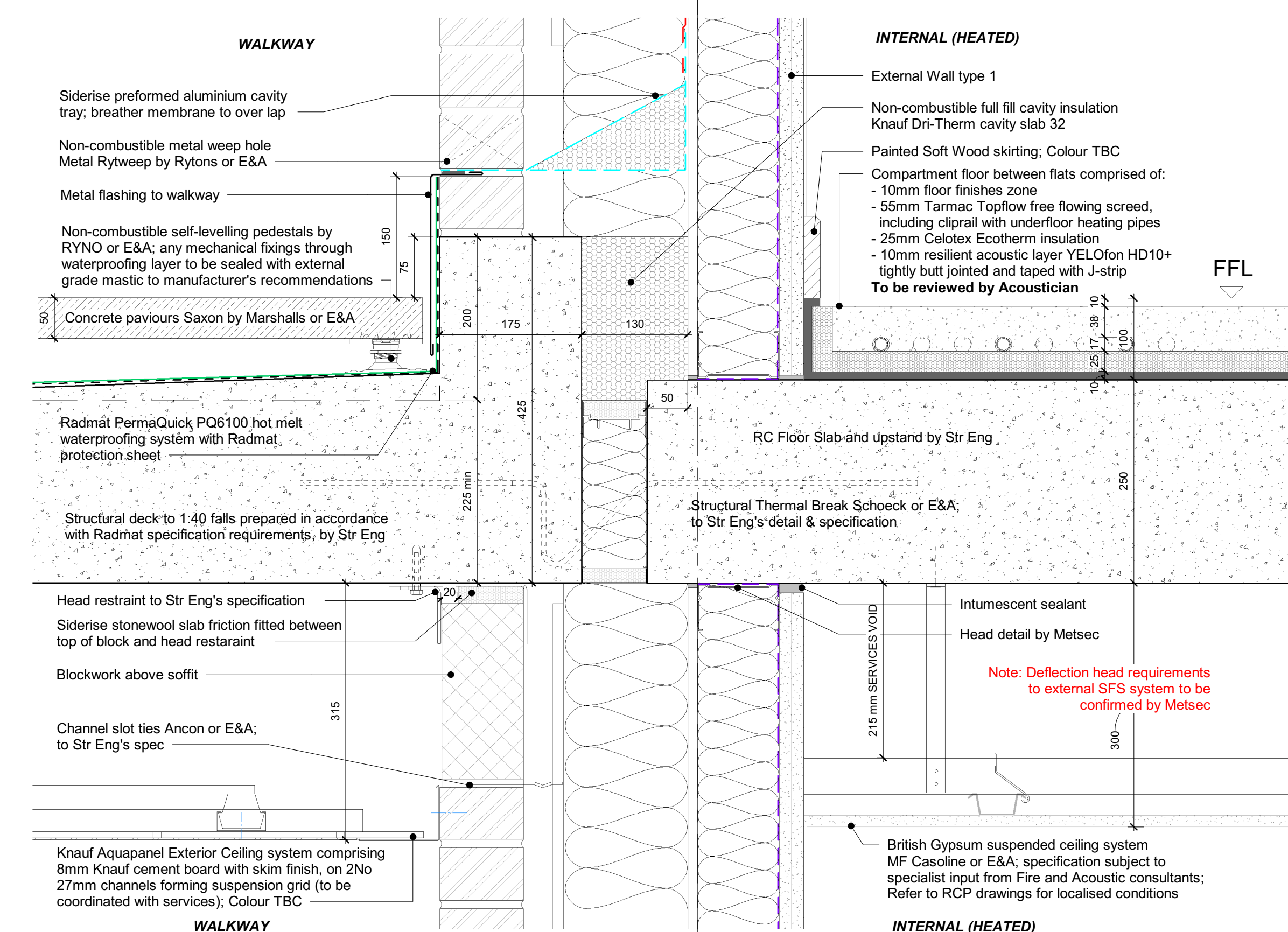


NOTES:

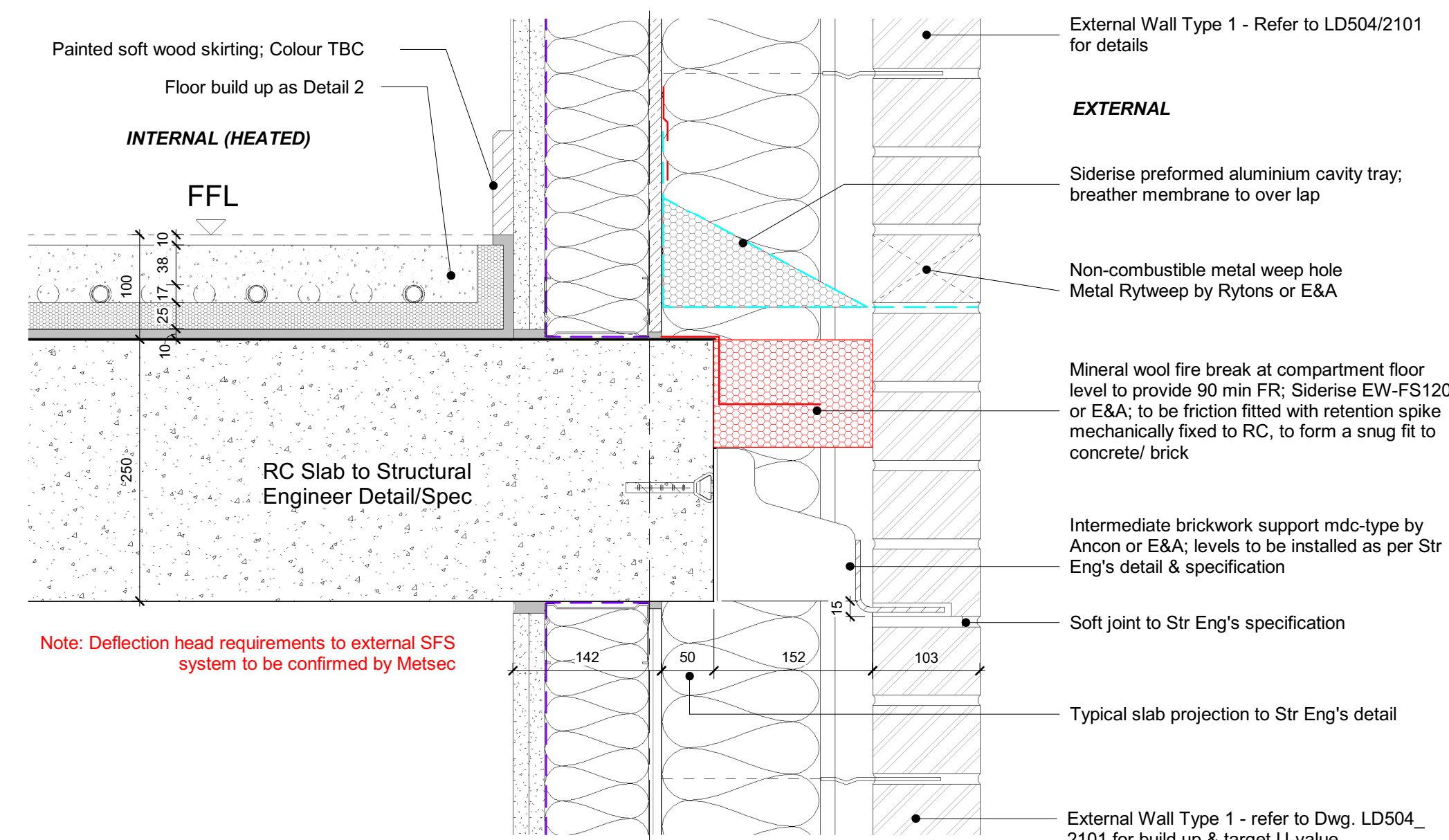
DETAILS SUBJECT TO APPROVAL BY BUILDING CONTROL, NHBC AND ALL RELEVANT STATUTORY BODIES.



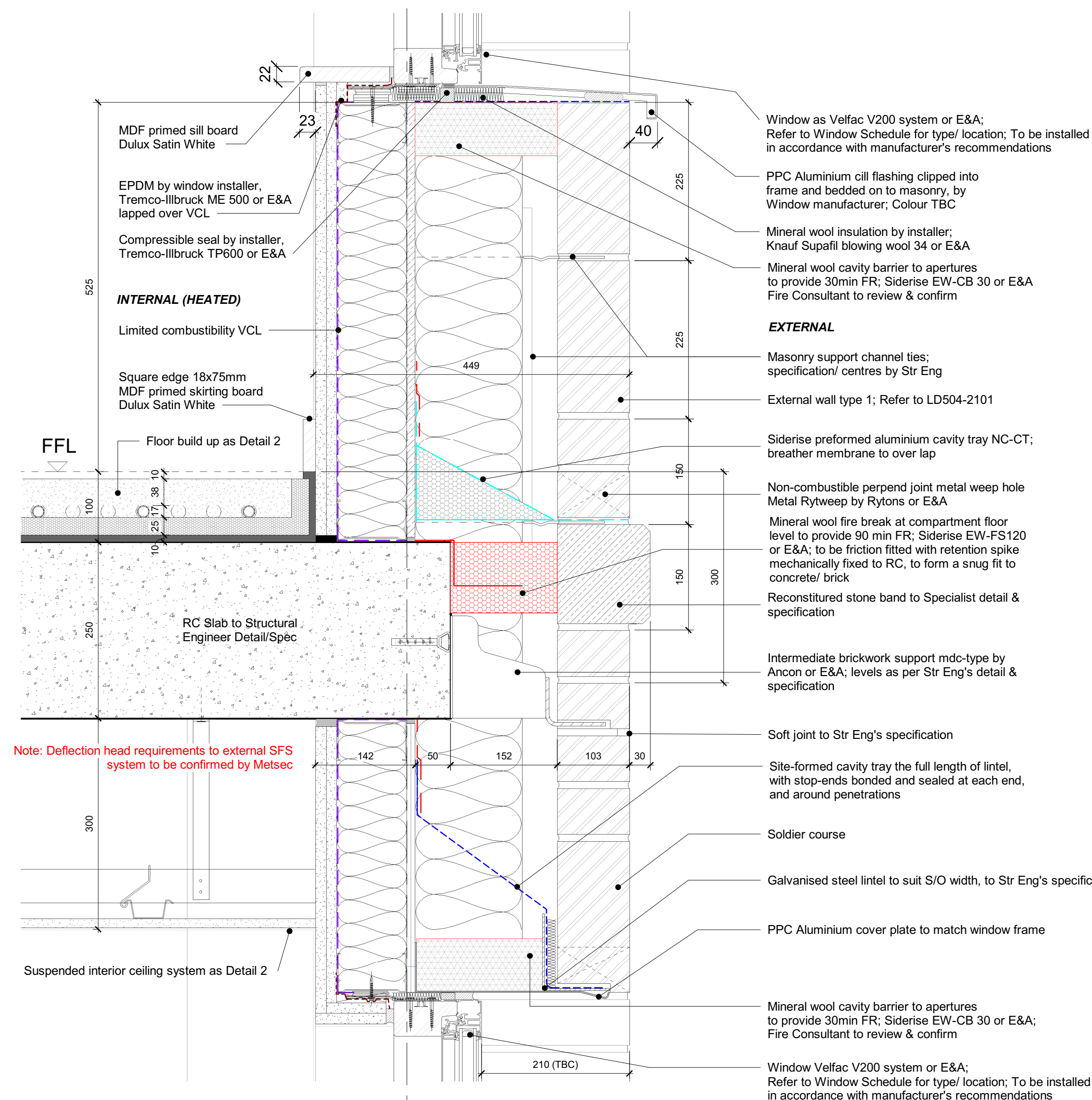
1 Ground Floor Base Detail - Block A/ GL 06-09
1:5



2 Typical Walkway Connection Detail
1:5



3 Typical Slab Edge Detail
1:5



4 Typical Wall Detail - Street Elevation
1:5

Rev	Date	Revision Details	Dr	Ch
P04	15.11.22	Detail 1 revised	AL	PA
P03	19.10.22	Updated to RIW requirements	AL	PA
P02	14.09.22	VE Changes incorporated	AL	PA
P01	25.01.22	Preliminary Issue	AL	DU

London: 76 Great Suffolk Street, London, SE1 0BL
T 020 7928 2773 E london@ecearchitecture.com
Sussex: Brooklyn Chambers, 11 Goring Road, Worthing, West Sussex, BN12 6AP
T 01903 248777 E sussex@ecearchitecture.com
Bristol: Westworks, Beacon Tower, Colston Street, Bristol, BS1 4XE
T: 0117 214 1101 E bristol@ecwestworks.com

ECE Architecture
www.ecearchitecture.com



Job Title
Belmont Street, Camden

Drawing Title
External Envelope Section Details - Sheet 1

Scale
1:5 @ A1 / 1:10 @ A3

Project Originator Zone Level Type Displ. Drg. No. Rev
LD504- ECE - ZZ - ZZ - DR - A - 2110P04

Drawn Checked Date
AL PA 19/11/21

Status
S3 - Suitable For Review & Comment