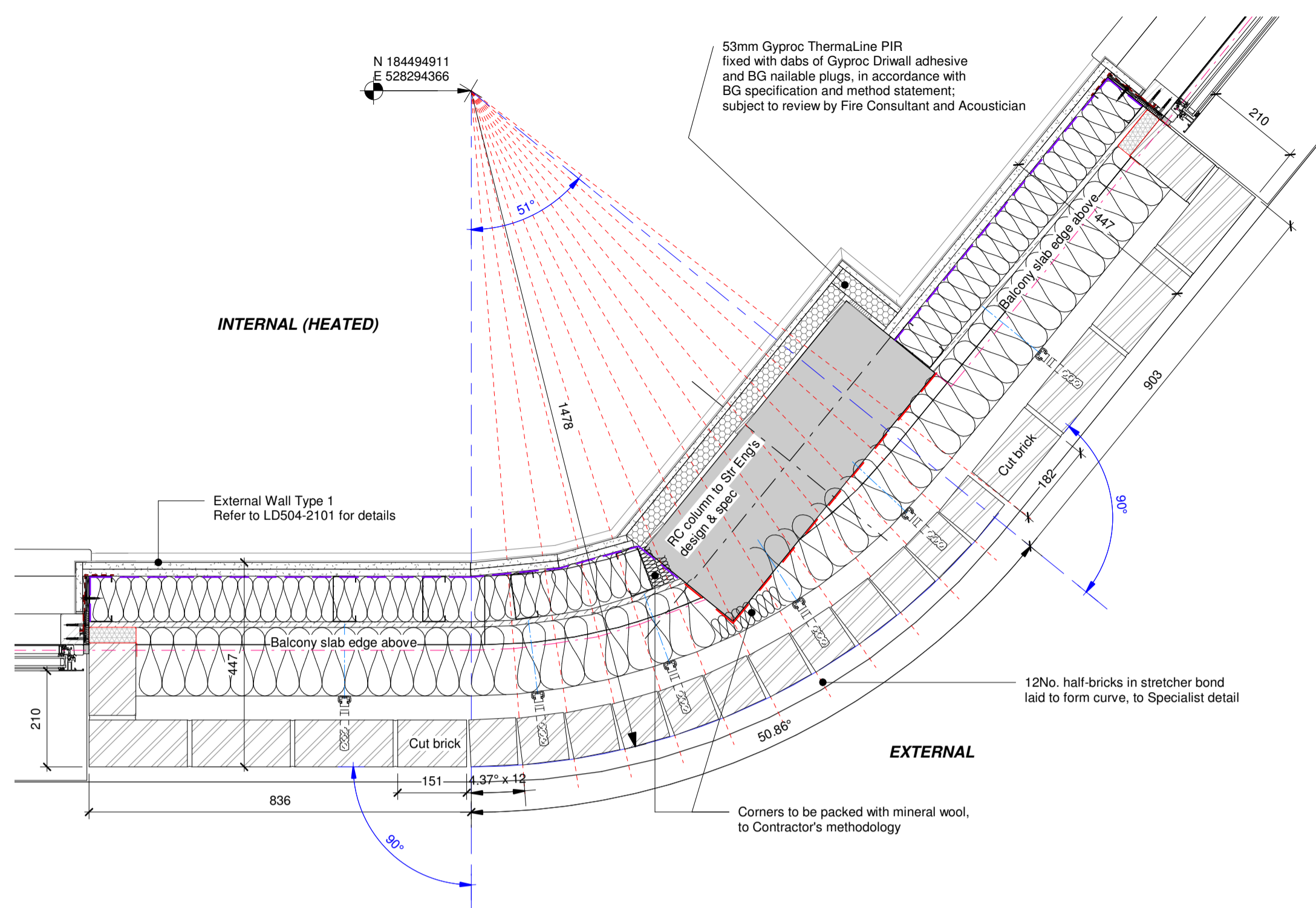
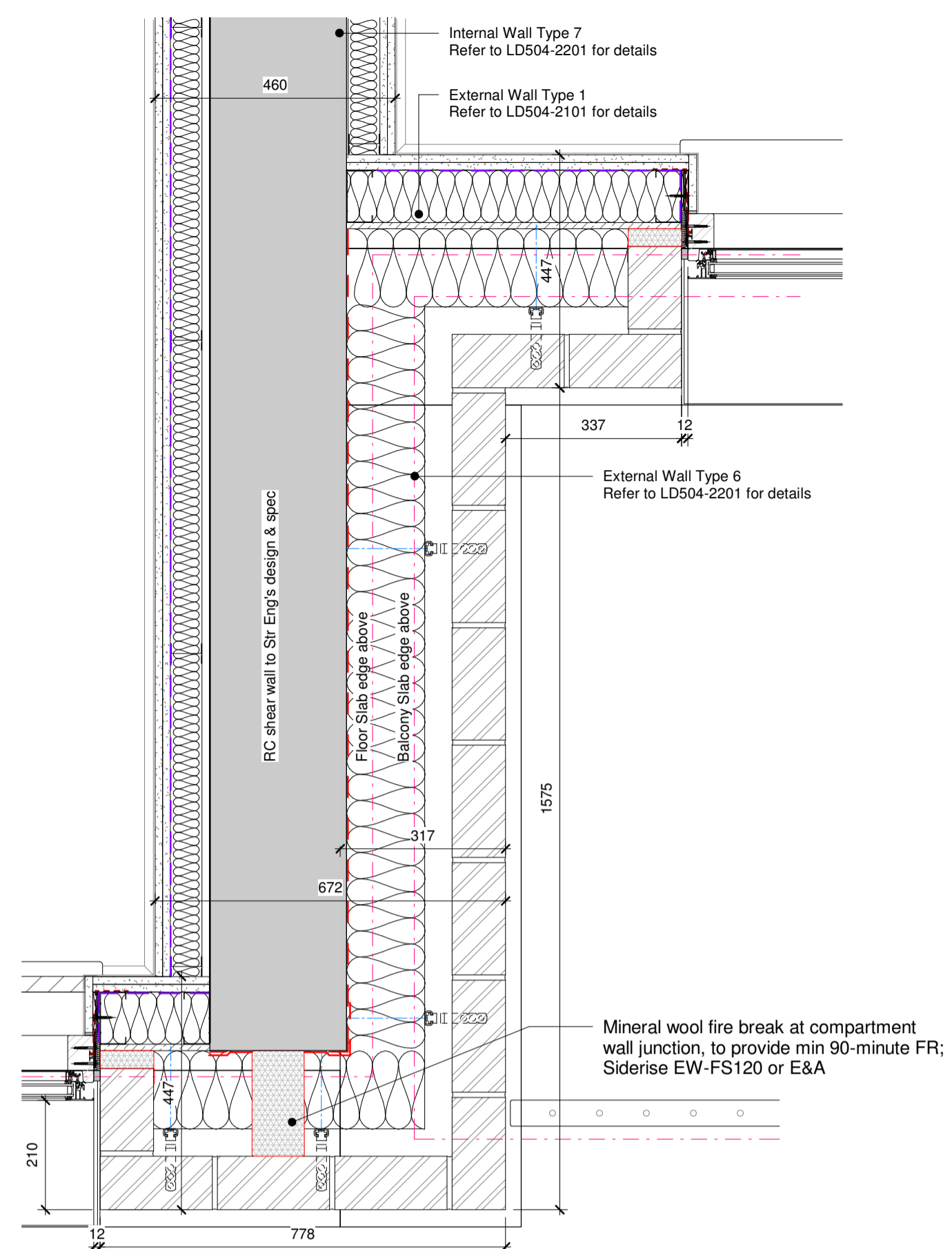


NOTES:

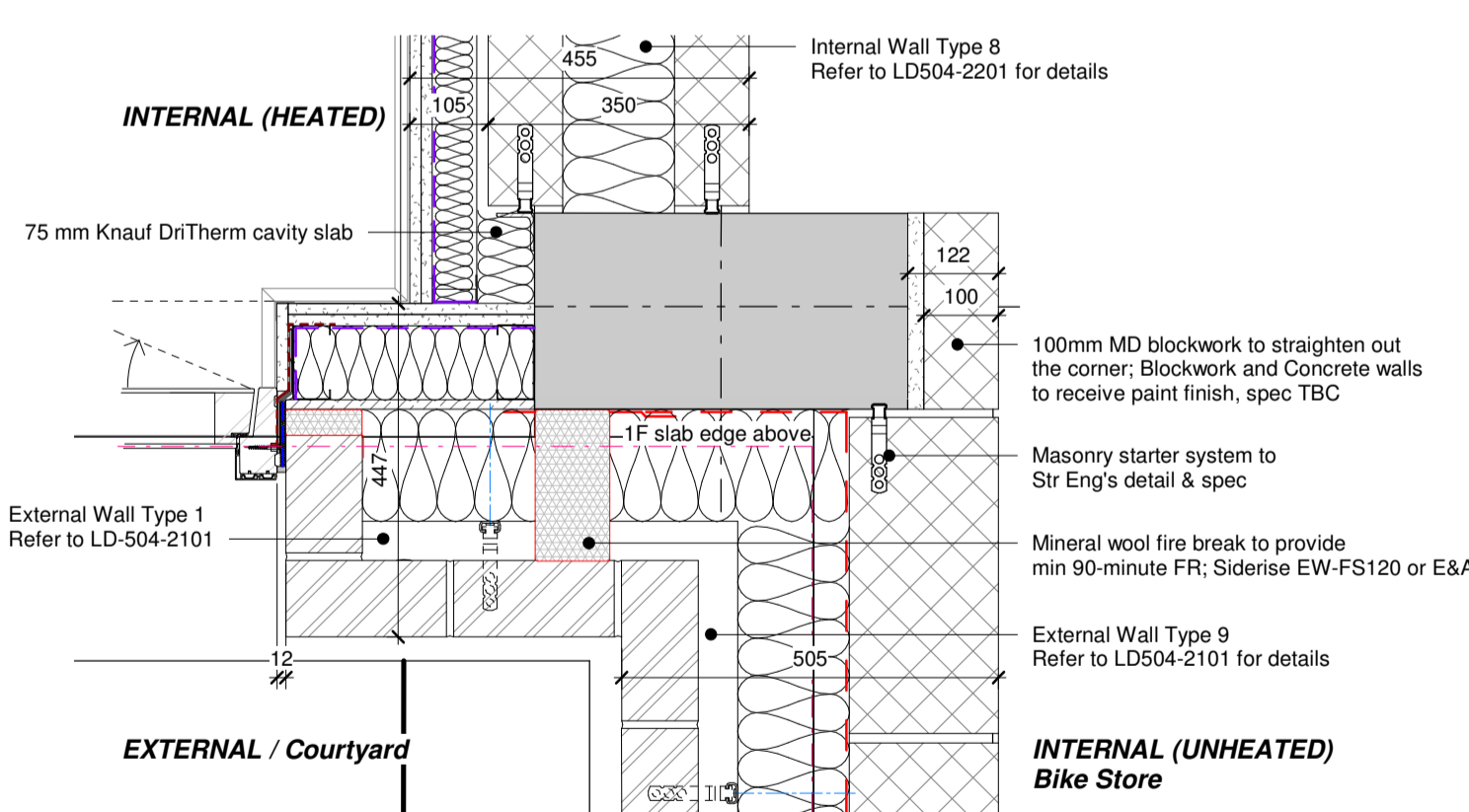
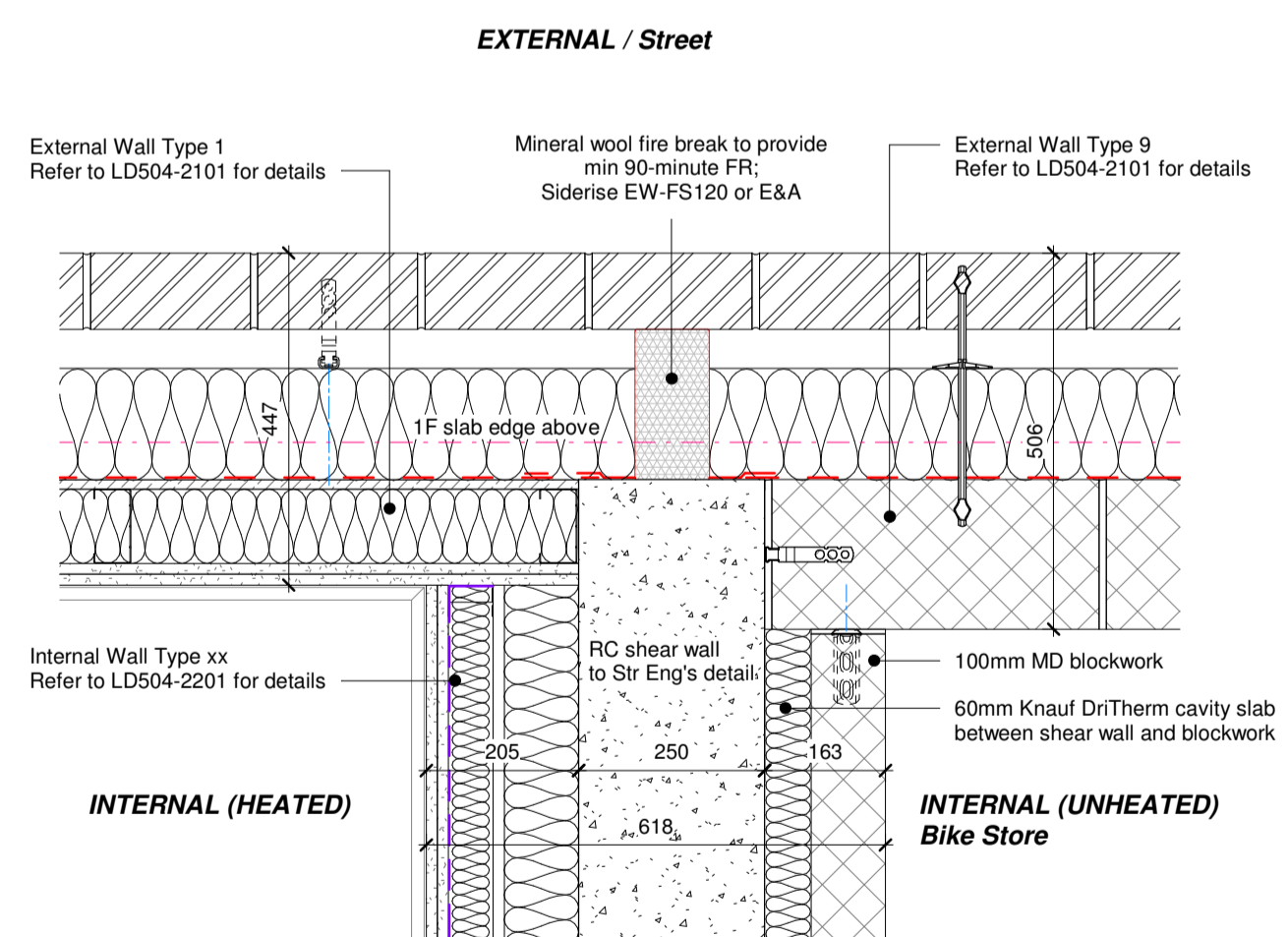
THE DETAILS ARE SUBJECT TO REVIEW BY ACOUSTICIAN AND FIRE CONSULTANT.

REFER TO STRUCTURAL ENGINEERS DRAWINGS AND SPECIFICATION FOR DETAILS OF MASONRY TIES, BED JOINT REINFORCEMENT, AND WINDOW REVEAL SUPPORT PLATES.



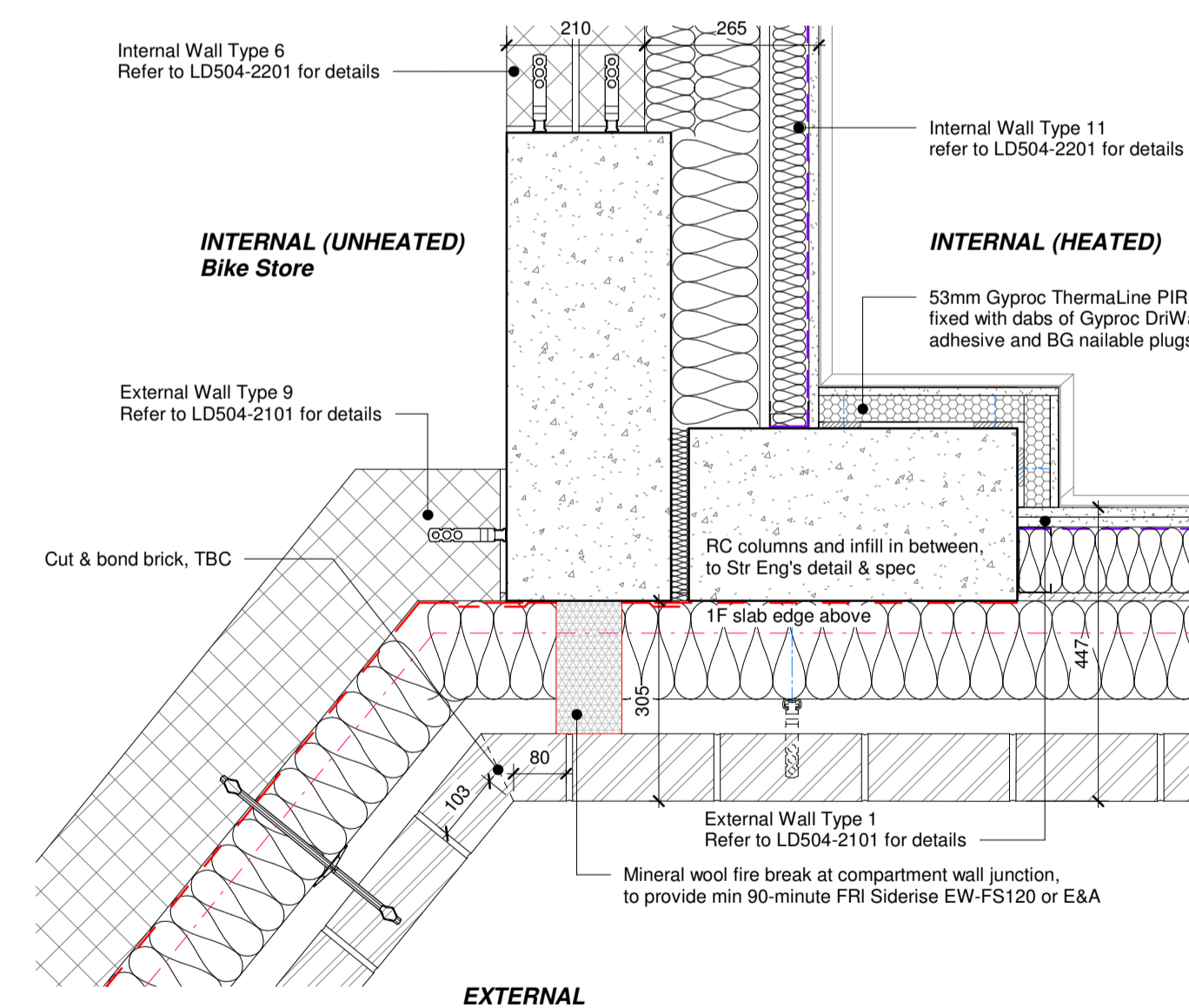
1 GF A&B Link - Wall Recess Detail  
1 : 10

2 GF Curved Wall Detail  
1 : 10



3 GF Party Wall Junction Detail 1  
1 : 10

4 GF Party Wall Junction Detail 2  
1 : 10



5 Party Wall Junction Detail 3  
1 : 10

Rev	Date	Revision Details	Dr	Ch
P02	14.09.22	VE Changes incorporated	AL	PA
P01	03.03.22	Preliminary Issue	AL	PA

**ECE Architecture**  
www.ecearchitecture.com

London: 76 Great Suffolk Street, London, SE1 0BL  
T 020 7928 2773 E london@ecearchitecture.com  
Sussex: Brooklyn Chambers, 11 Goring Road, Worthing, West Sussex, BN12 4AP  
T 01903 248777 E sussex@ecearchitecture.com  
Bristol: Westworks, Beacon Tower, Colston Street, Bristol, BS1 4XE  
T: 0117 214 1101 E bristol@ecwestworks.com



Job Title  
Belmont Street, Camden

Drawing Title  
External Envelope Plan details - Sheet 2

Scale  
1:10 @ A1 / 1:20 @ A3



Project	Originator	Zone	Level	Type	Displ.	Dr. No.	Rev
LD504- ECE - ZZ - 00 - DR - A - 2121	P02						

Drawn	Checked	Date
AL	PA	02/02/22

Status  
**S3 - Suitable For Review & Comment**