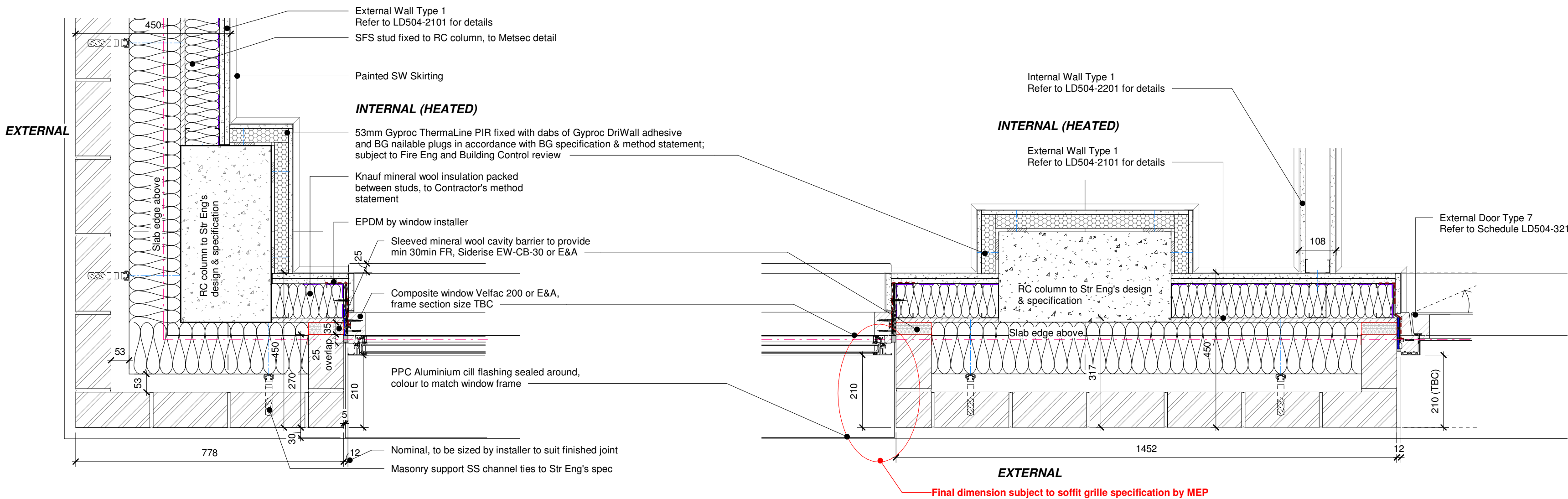


NOTES:

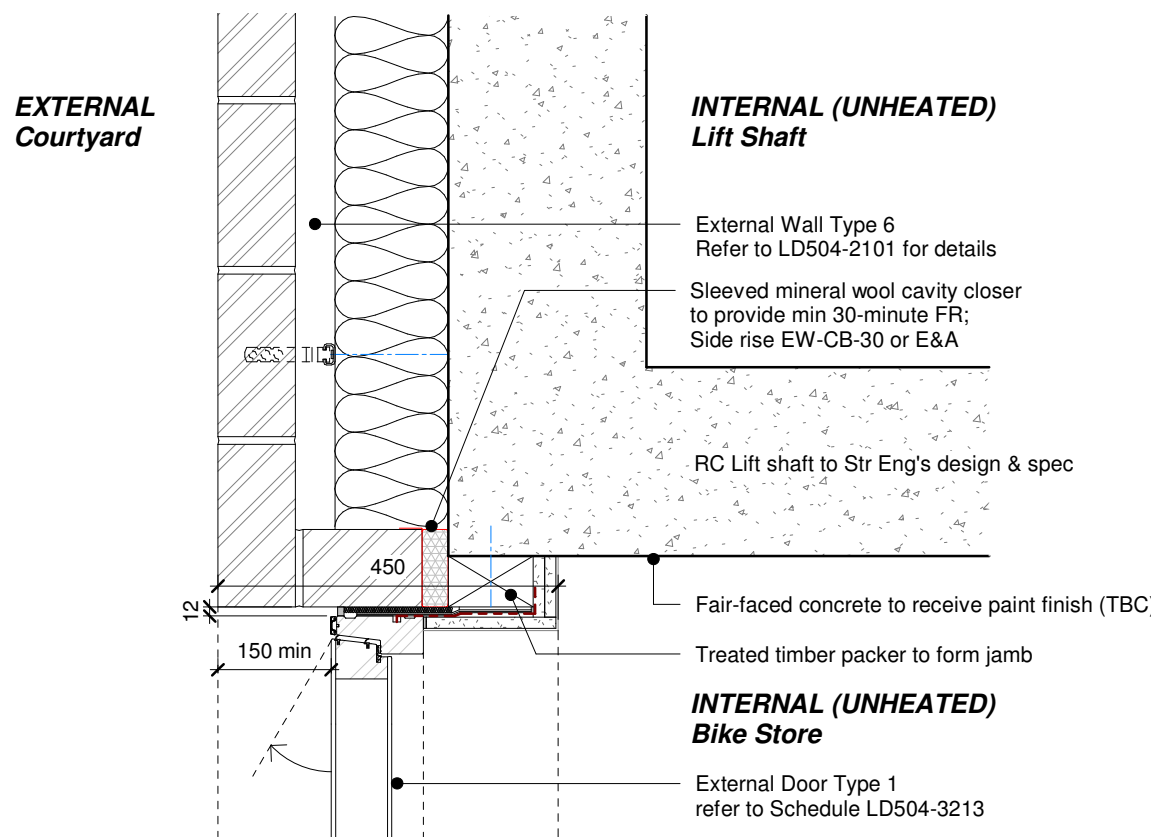
THE DETAILS ARE SUBJECT TO REVIEW BY ACOUSTICIAN AND FIRE CONSULTANT.

REFER TO STRUCTURAL ENGINEERS DRAWINGS AND SPECIFICATION FOR DETAILS OF MASONRY TIES, BED JOINT REINFORCEMENT, AND WINDOW REVEAL SUPPORT PLATES.

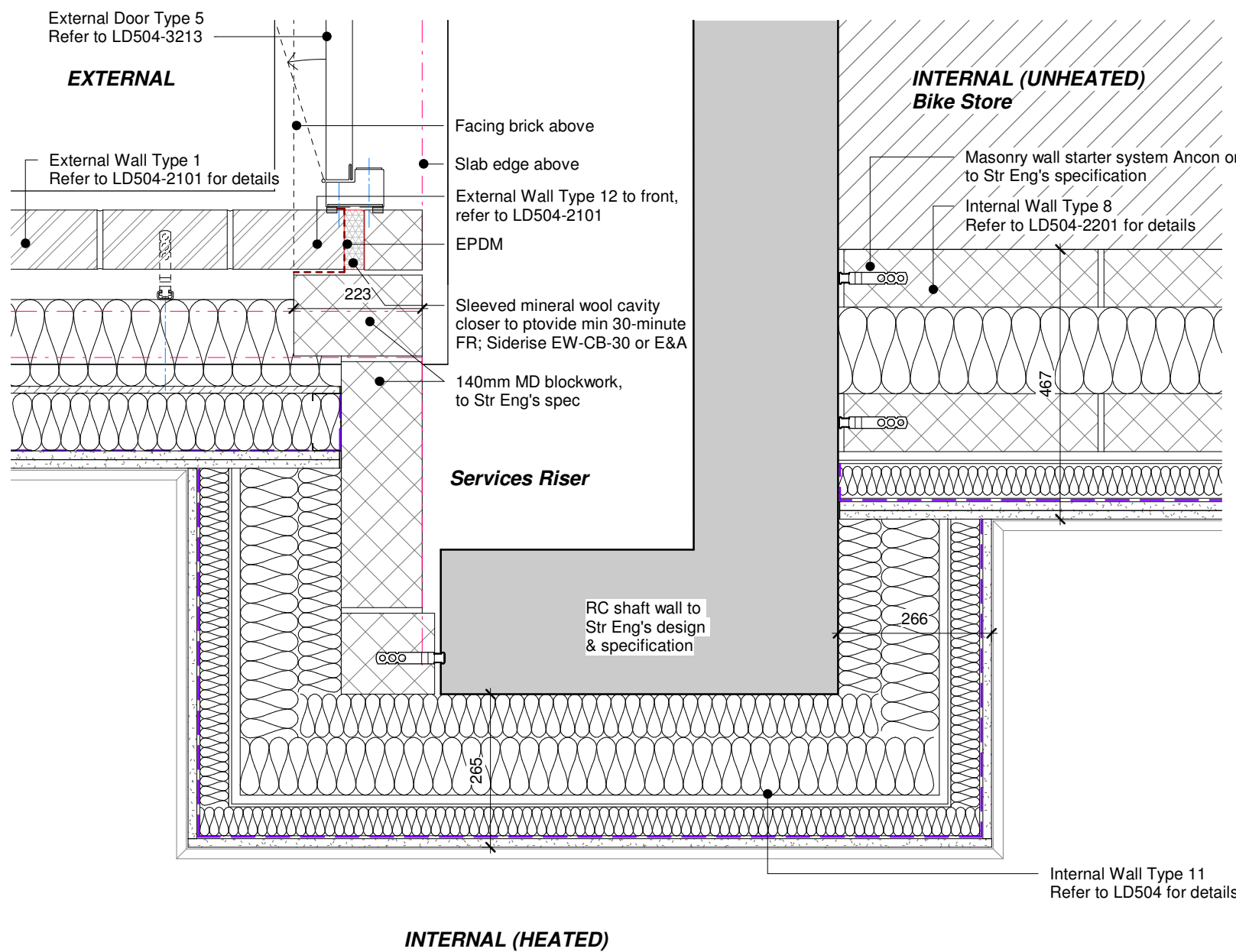


1 Window Jamb - Street Elevation  
1 : 10

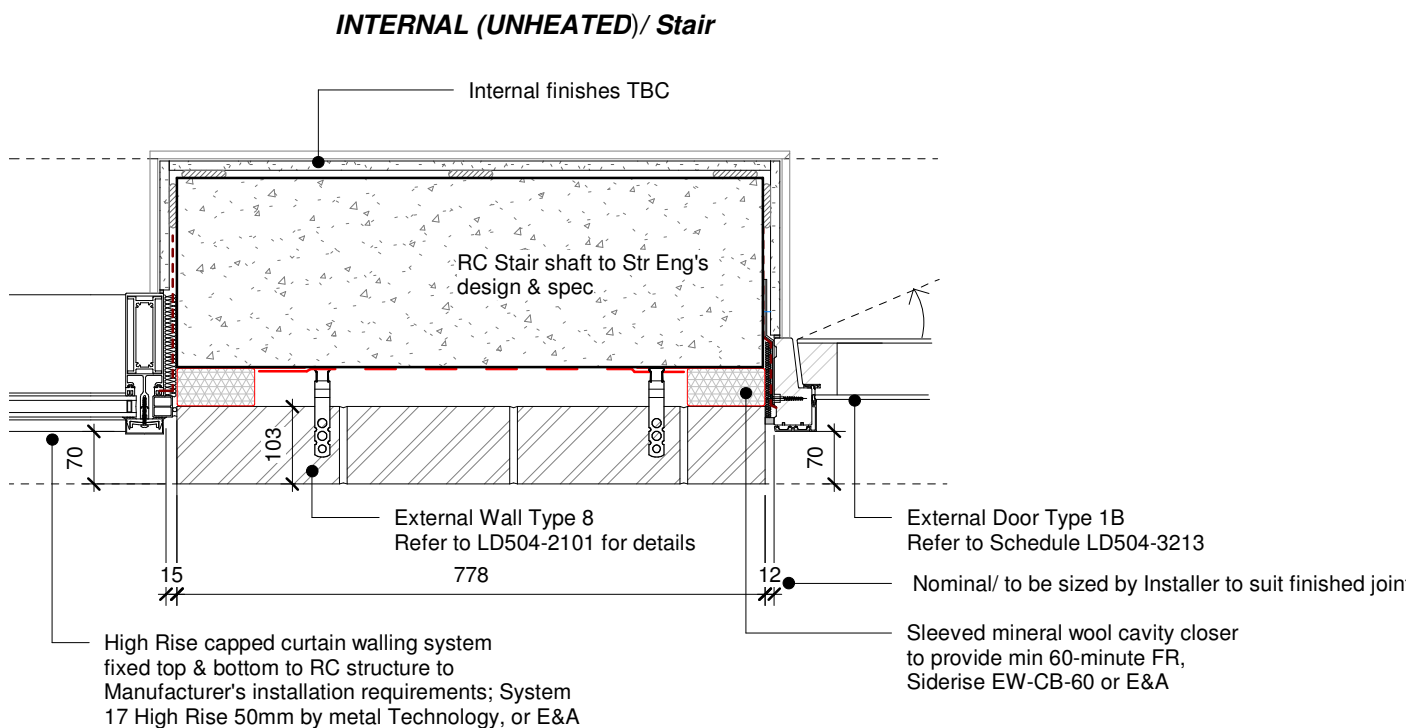
2 GF Door & Window Jamb - Street Elevation  
1 : 10



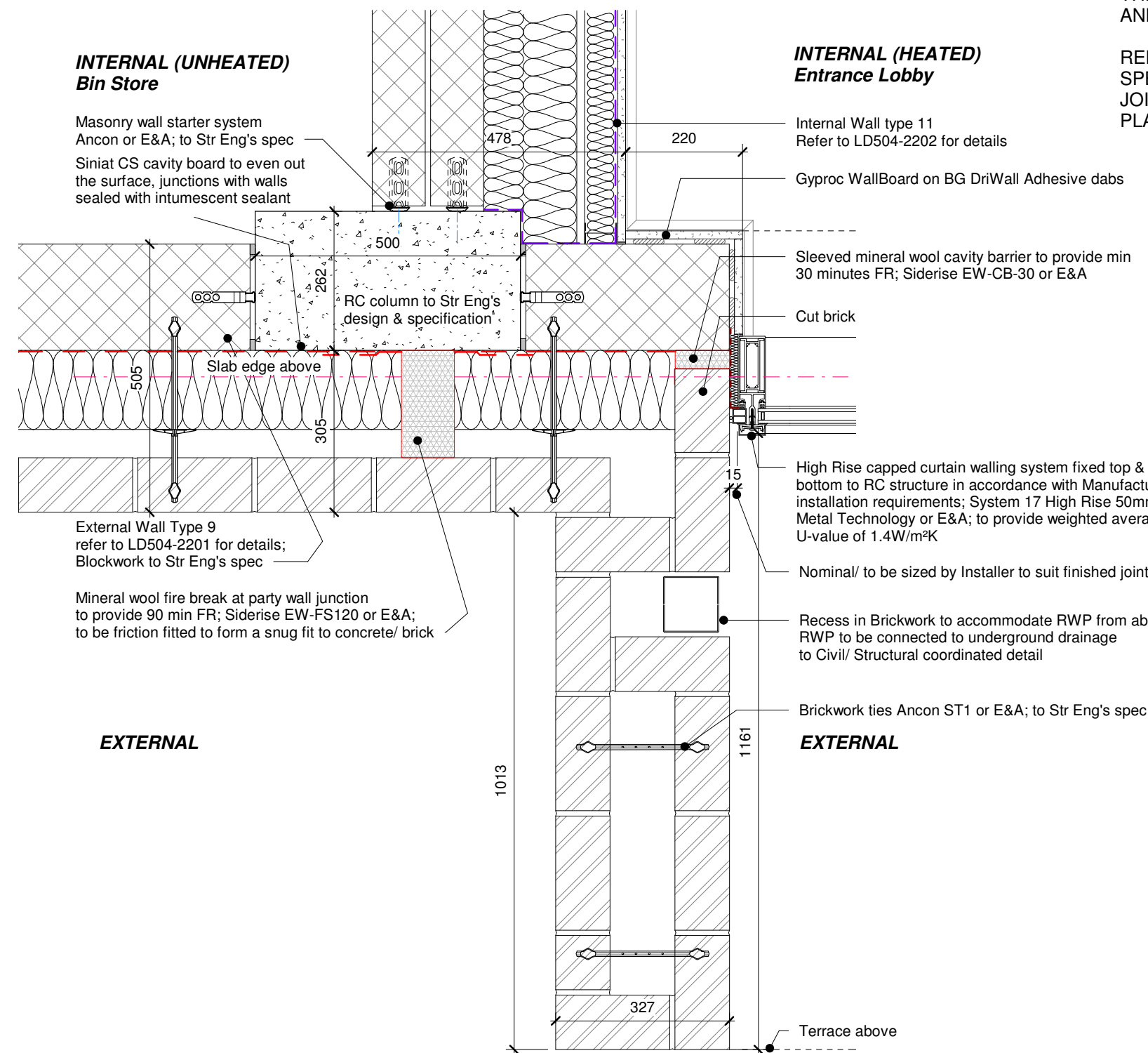
4 Lift Shaft Wall - GF Door Jamb  
1 : 10



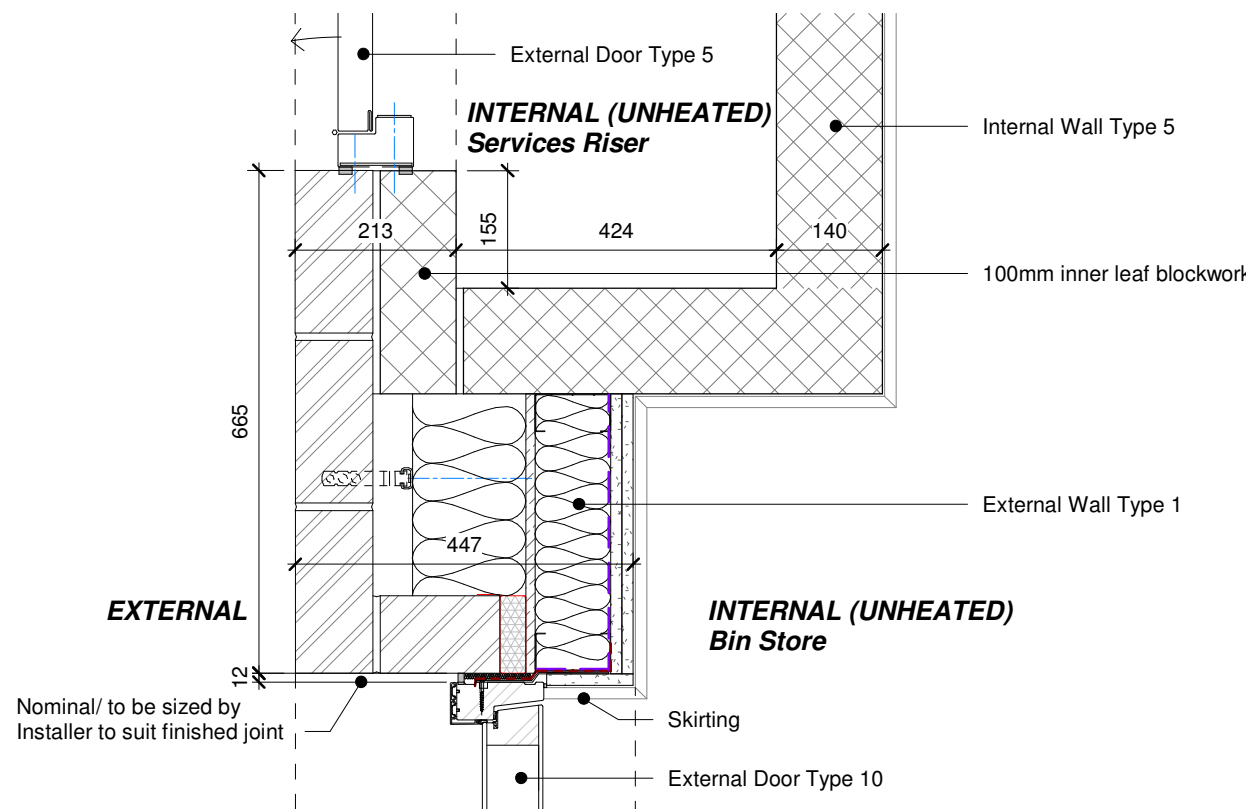
5 Services Riser - GF Wall Junction 1  
1 : 10



7 External Stair - GF Door & Window Jamb  
1 : 10



3 Brick Pier - GF Entrance  
1 : 10



6 Services Riser - GF Wall Junction 2  
1 : 10

P02	14.09.22	VE Changes incorporated	AL	PA
P01	03.03.22	Preliminary Issue	AL	PA
Rev	Date	Revision Details	Dr	Ch

**ECE Architecture**  
www.ecearchitecture.com

**London:** 76 Great Suffolk Street, London, SE1 0BL  
T 020 7928 2773 E london@ecearchitecture.com

**Sussex:** Brooklyn Chambers, 11 Goring Road, Worthing, West Sussex, BN12 4AP  
T 01903 248777 E sussex@ecearchitecture.com

**Bristol:** Westworks, Beacon Tower, Colston Street, Bristol, BS1 4XE  
T: 0117 214 1101 E bristol@ecwestworks.com



Job Title  
Belmont Street, Camden

Drawing Title  
External Envelope Plan Details - Sheet 1

Scale  
1:10 @ A1 / 1:20 @ A3



Project	Originator	Zone	Level	Type	Displ.	Drp. No.	Rev
LD504- ECE - ZZ - 00 - DR - A - 2120	P02						

Drawn	Checked	Date
AL	PA	02/02/22

Status

S3 - Suitable For Review & Comment