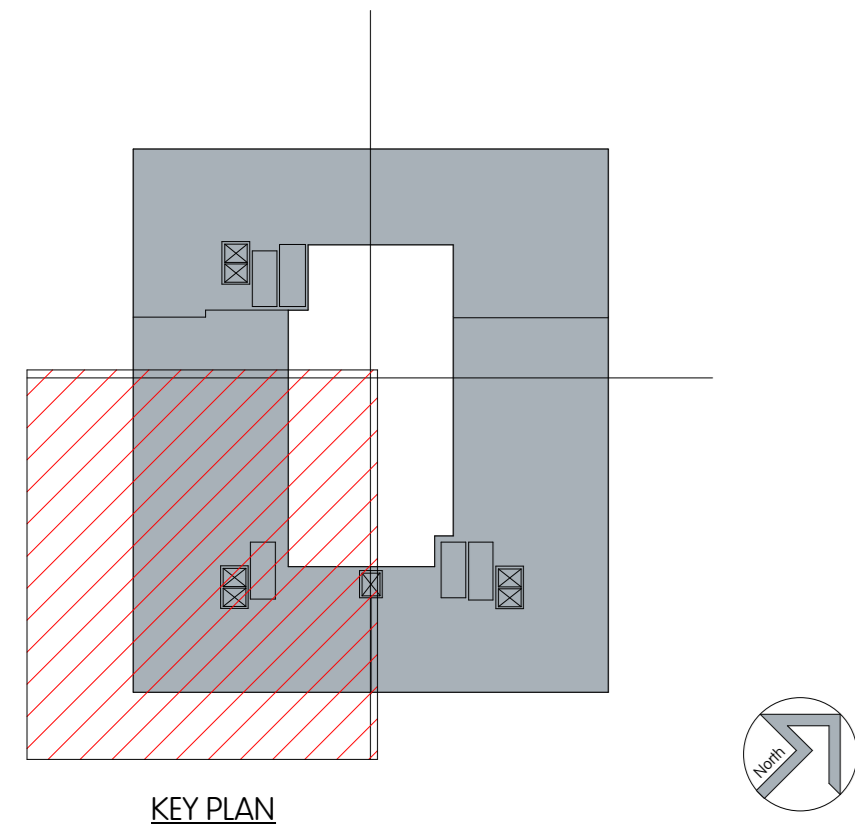
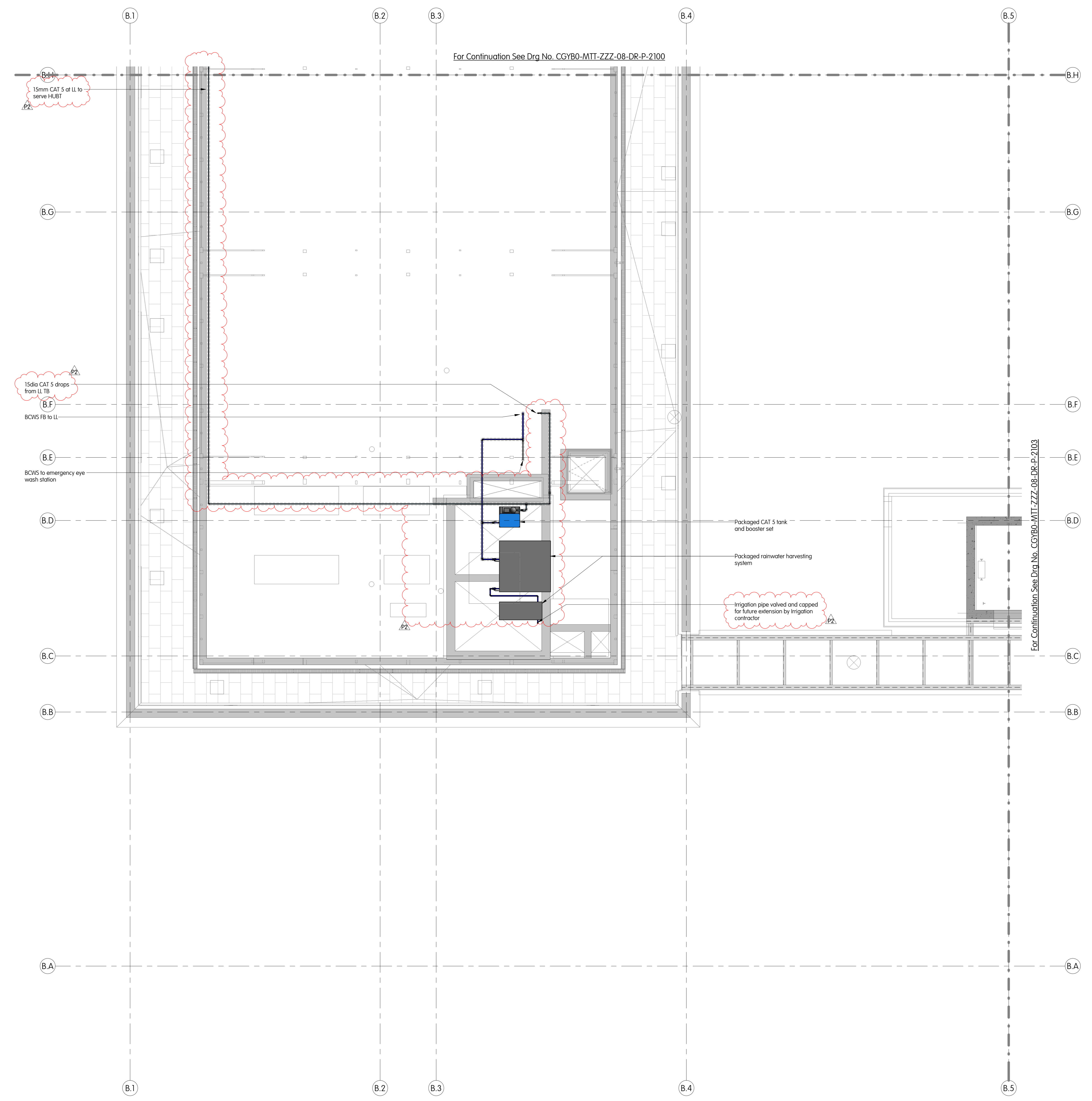


NOTES

- This drawing is for engineering services only and is to be read in conjunction with all relevant architectural, structural, MTT drawings and the Contract specification.
- THIS IS NOT AN INSTALLATION DRAWING.**
- All services routes and equipment locations are indicative, actual location and configuration to be determined by contractor following completion of contractor design and coordination.
- This drawing will only be issued in PDF format.
- All penetrations of the fire compartment are to be suitably treated and sealed. All non-metallic pipework is to be provided with fire collars.
- All pipework to be supported in accordance with the manufacturer's requirements.
- All low points within the system are to be provided with drain off cocks.
- Movement / expansion joints to be provided inline with the pipe manufacturer's requirements.
- All pipework subject to freezing shall be complete with frost protection.
- All fittings to be WRAS or Kitem UK approved or have bespoke approval from the local water Authority.
- All terminal fittings shall be fitted with accessible combined constant flow regulators and servicing valves as Viaga CP961 screwed wonder valve to be accessible.
- All cold water storage plantrooms to be shall be provided with leak detection and bunding.
- All hot water pipework to be trace heated using Raychem HWAT-M rated at 55°C.
- To meet Building Regulations Part G the T&R relief line from the water heaters will need to be installed using copper pipework.
- WH-B to fitted with thermostatic mixing valves (TMV2) Set at 41°C located behind access panel.
- DDA wash basins to be fitted with DOC M taps incorporating TMV3 thermostatic mixing valve.
- All pressure reducing valves to be fully adjustable on site and set to a pressure of 3.5 bar complete with integral pressure gauge.
- All shower fittings to be provided with integral thermostatic valves and complete with an anti scald device. Refer to Architects sanitaryware schedule.
- Refer to drawing CGYB0-MTT-ZZZ-ZZ-DR-P-0001 Public Health Services Legend of Symbols.



Copyright © MTT No part of this drawing, however produced or in any form, may be reproduced, stored in a retrieval system, or transmitted, in any form or by any means, without the express permission of MTT.		This drawing should not be scaled. All dimensions to be checked on site. Any discrepancies to be notified to MTT.			
Rev	Date	Description	Drawn	Checked	
P2	20.04.2022	Stage 4 Issue. Comments incorporated.	JS	JM	
P1	24.01.2022	Stage 4 Issue	BK	SD	



A 9 KINGSWAY LONDON WC2R 0JF	PM T Ward Ced N Keyser	Camden Goods Yard Public Health Services Building B - Level 08 (Roof) Water Layout - Sheet 3 of 4
T +44 (0)20 7836 1133 F +44 (0)20 7836 1153 E info@mtt-limited.com	Date February 2022 Scale 1:50 @ A0	
W mtt-limited.com	Status STAGE 4	Dwg No. CGYB0-MTT-ZZZ-08-DR-P-2102 Revision P2

