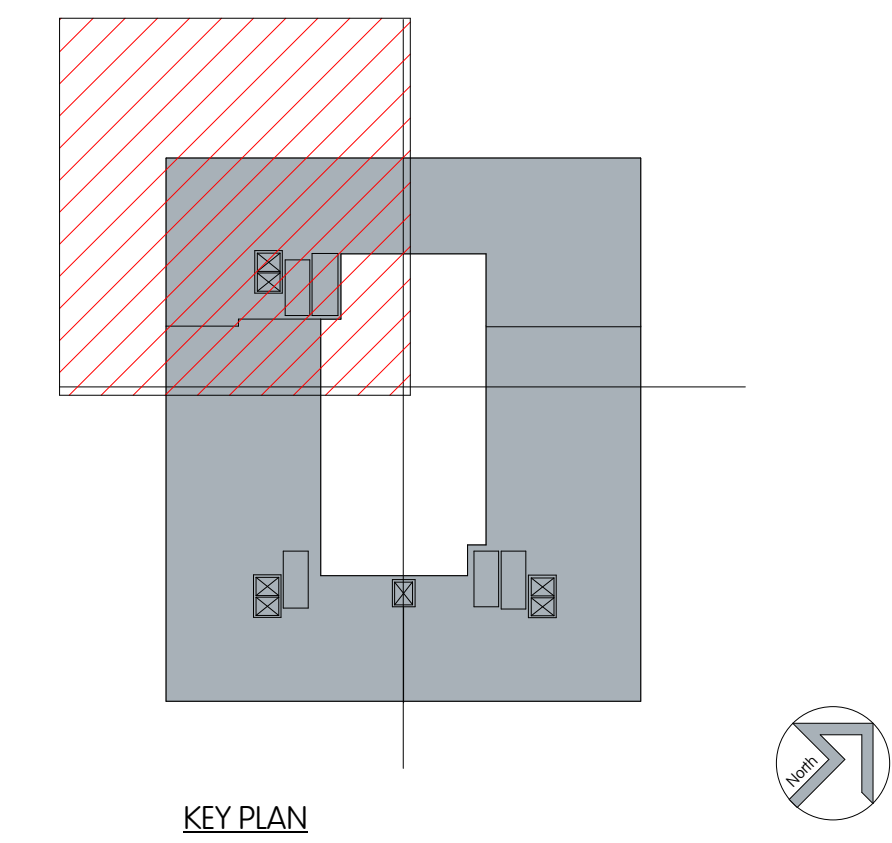
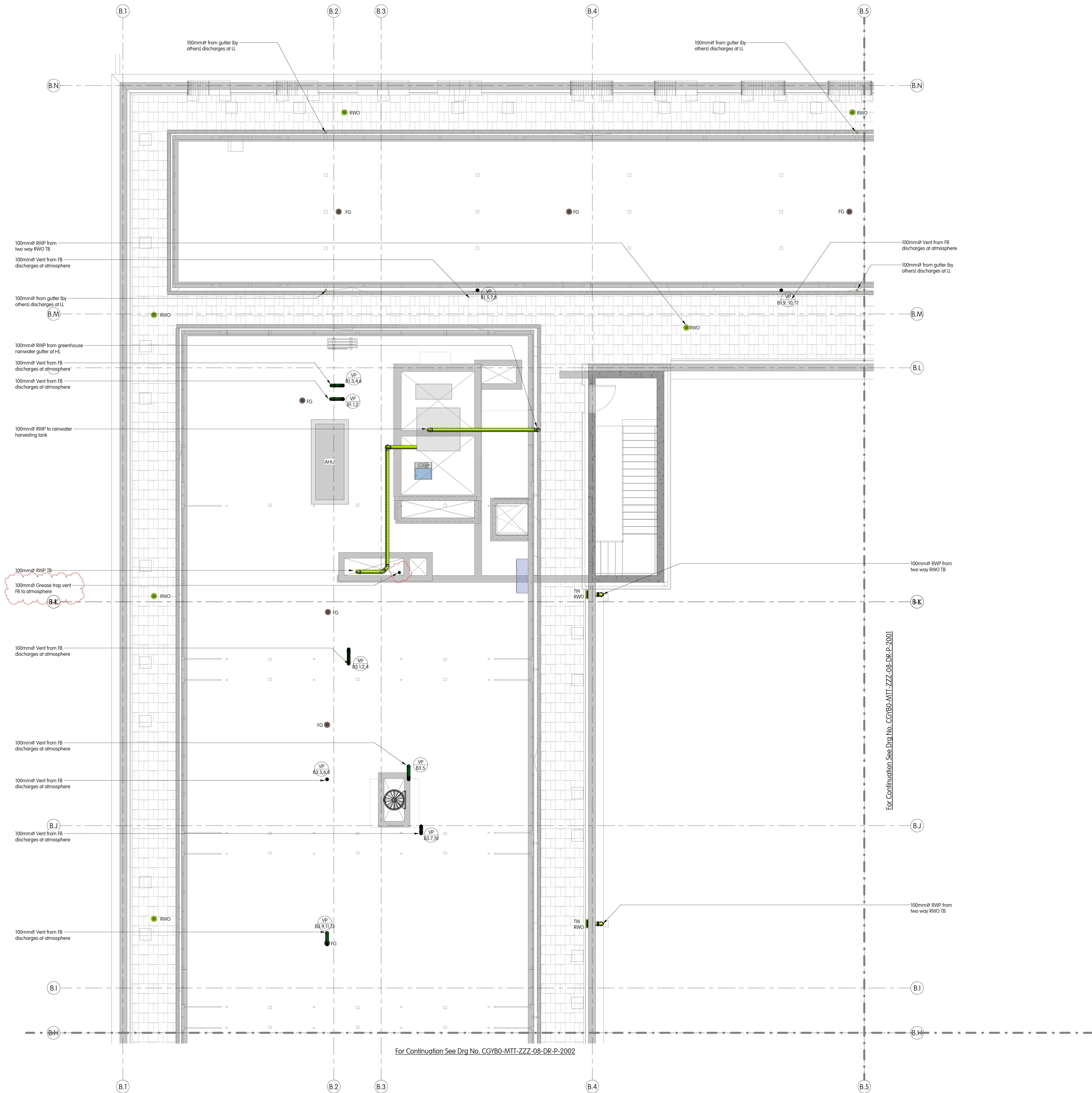



## NOTES


- This drawing is for engineering services only and is to be used in conjunction with all relevant architectural, structural and MEP drawings and the Contract specification.
- THIS IS NOT AN INSTALLATION DRAWING**
- All service routes and equipment locations are indicative, actual location and configuration to be determined by contractor following completion of contract design and coordination.
- This drawing will only be issued in PDF format.
- All sanitary fittings must be WRAS approved.
- All terminal fittings shall be fitted with accessible standard brass or chrome plated brass or plastic capped as specified. All capped items such as Viega CPN® screwed connections must be accessible.
- W-BR - 4-1pm Hot and Cold  
WRB - 8-1pm Hot and Cold  
WBH - 16-1pm Hot and Cold  
Pipe - Spring Steel  
WCs - Unions  
Shower - 2LU
- All access points and rodding eyes are to be located at least 100mm from the edge of the floor and the stacks to be typically 1000mm APFL. Exact location to suit subwastewater access panels in accordance with manufacturer's requirements.
- All penetrations of the fire compartment are to be suitably treated and sealed. All non-metallic pipework is to be provided with fire collars.
- All pipework to be supported in accordance with the manufacturer's requirements.
- Allowance shall be made for additional access points for testing
- Drainage outlets and base of stacks shall be marked with long range orange bands or 20x455 bands.
- All soil and Rainwater pipes to be provided with 25mm flange 13kg/m<sup>2</sup>. Multiple high density acoustic insulation shall be applied above ceilings in the apartments the pipework shall also be encased 2 layers of 13mm dense plasterboard. Refer to electrical drawings for details of plasterboard encasement.
- All 75mm and 100mm Soil and waste pipework with flow rates less than 1 l/sec shall be installed in accordance with BS EN 1255 and 1205m Soil and waste pipework with flow rates greater than 1 l/sec shall be installed to a fall of 1:60 - 1:80.
- All surface water drainage will be installed at falls of 1:50 to 1:100mm per run. 75 to 200mm unventilated.
- Refer to drawing GY00-MAT-INT-222-LZS, P-P001 Public Health Services Drawing Legend



Copyright by MIT.		No copyright in this drawing, however produced and/or transmitted may be made or undertaken, without the express permission of MIT.			
This drawing should not be scaled. All dimensions to be checked on site. Any discrepancies to be notified to MIT.					
P3	18.11.2022	Stage 4 issue. Comments Incorporated.	NK	JM	
P2	22.04.2022	Stage 4 issue. Comments Incorporated.	JS	JM	
P1	04.02.2022	Stage 4 issue			
Rev	04.02.2022	Description	Drawn	Checked	



# MTT/DRAWING

<div> <div>A</div> <div>9 KINGSWAY LONDON WC2B 6XF</div> </div> <div> <div>T</div> <div>+44 (0)20 7836 1133</div> </div> <div> <div>F</div> <div>+44 (0)20 7836 1153</div> </div> <div> <div>E</div> <div>info@mtf-limited.com</div> </div> <div> <div>W</div> <div>mtf-lim-ltd.com</div> </div>	<div>PH: T Word</div> <div>Ced: N Keyser</div> <div>Date: February 2022</div> <div>Scale: 1:50 @ A0</div>	<div>Camden Goods Yard</div> <div>Public Health Services Building B - Level 08 (Roof) Drainage Layout - Sheet 1 of 4</div>	
	<div>Status: <b>STAGE 4</b></div>	<div>Dwg No: <b>CGYB0-MIT-ZZZ-08-DR-P-2000</b></div>	
		<div>Revision: <b>P3</b></div>	