

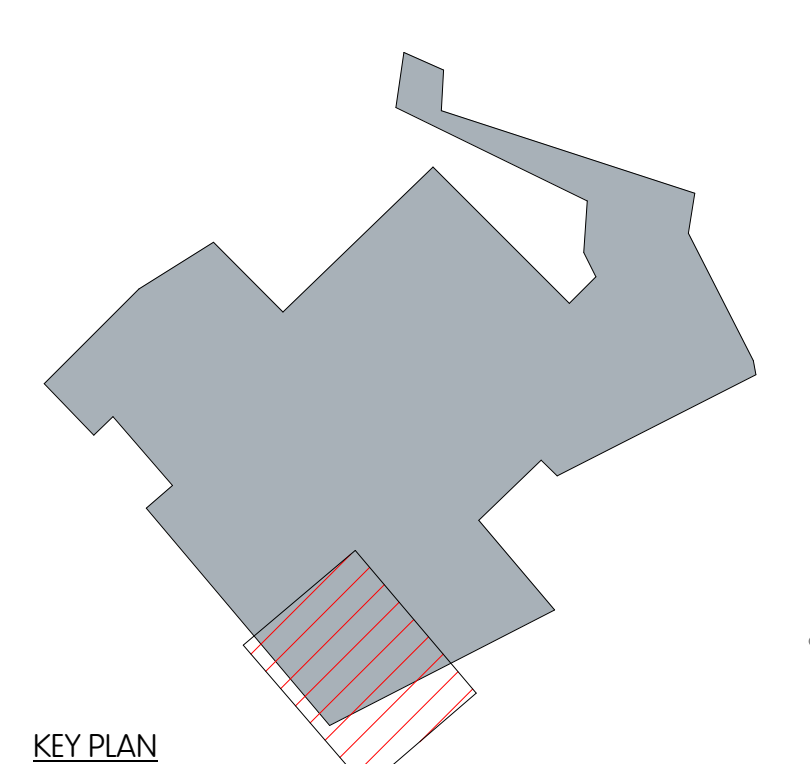
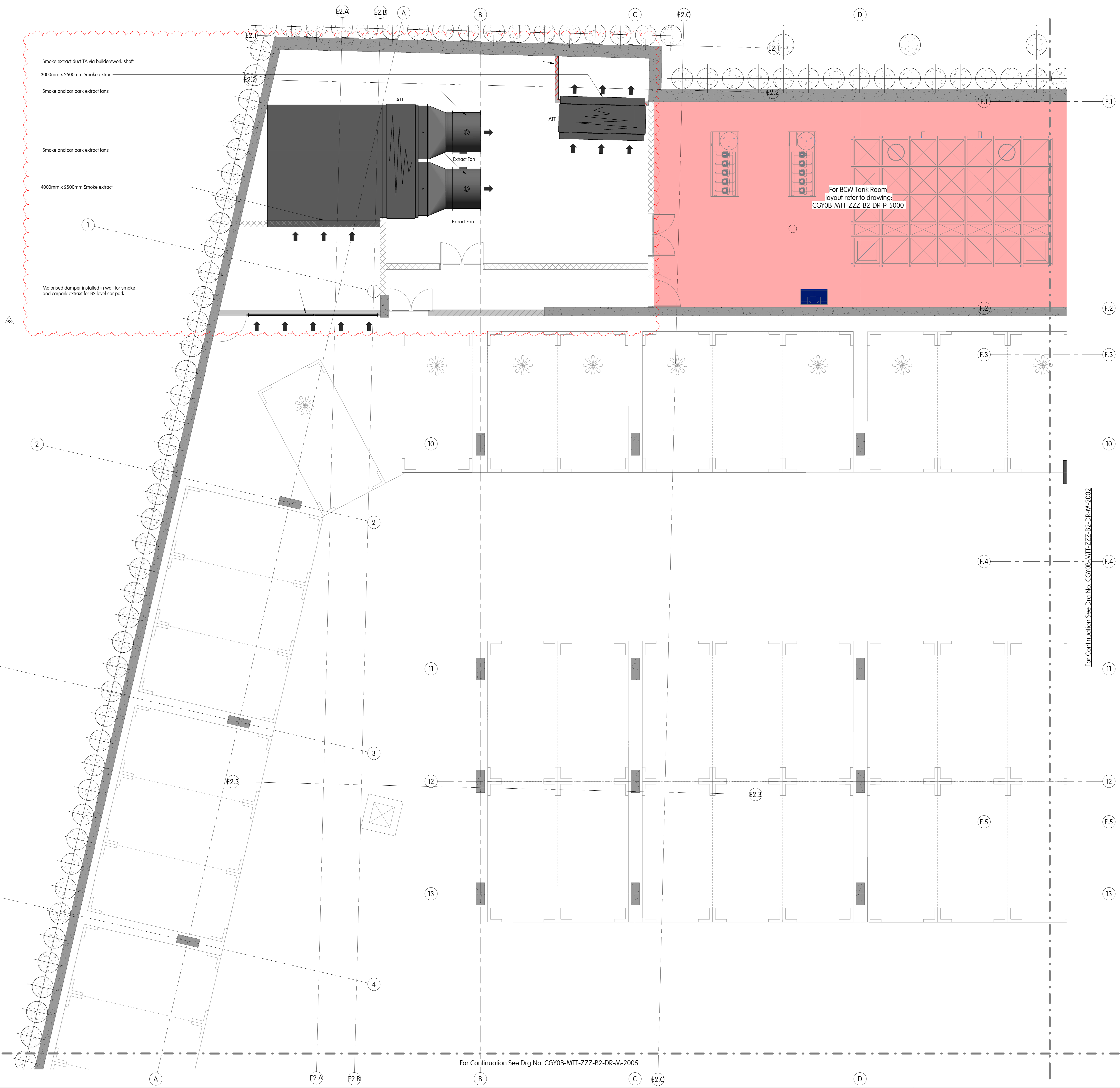
**NOTES**

1. This drawing is for engineering services only and is to be read in conjunction with all relevant architectural, structural, mTT drawings and the Contract specification.
2. **THIS IS NOT AN INSTALLATION DRAWING.**
3. All services routes and equipment locations are indicative, actual location and configuration to be determined by contractor following completion of contractor design and coordination.

Rev.	Date	Description	Drawn	Checked
P3	12.08.2022	Stage 4 Issue: Comments Incorporated.	JS	RH
P2	16.05.2022	Stage 4 Issue: Comments Incorporated.	VA	JM
P1	15.12.2021	Stage 4 Issue	NK	RH

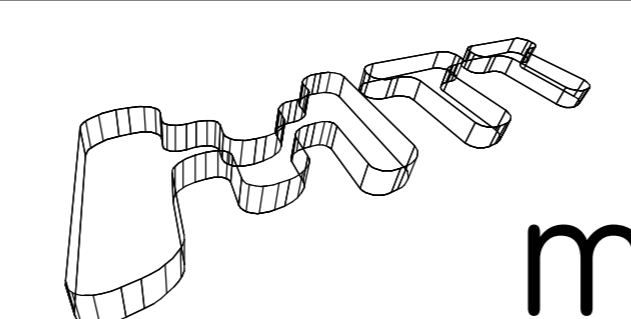
Copyright © mTT  
No copies of this drawing, however produced, shall be transmitted, made or undertaken, without the express permission of mTT.  
This drawing should not be scaled. All dimensions to be checked on site. Any discrepancies to be notified to mTT.  
Issue and approval notes:  
CGY08-MTT-ZZZ-B2-DR-M-2004  
Date: 15/12/2021  
Drawn: NK  
Checked: RH

KEY PLAN

For Continuation See Drg No. CGY08-MTT-ZZZ-B2-DR-M-2005

For Continuation See Drg No. CGY08-MTT-ZZZ-B2-DR-M-2002



**MTT/DRAWING**

<p>9 KINGSWAY LONDON WC2B 6AF</p> <p>T +44 (0)20 7836 1133 F +44 (0)20 7836 1153 E info@mtt-limited.com W mtt-limited.com</p>	<p>PM T Ward Ctd N Keyser</p> <p>Date February 2022 Scale 1:50 @ A0</p> <p>Status <b>STAGE 4</b></p>	<p><b>Camden Goods Yard</b></p> <p>Mechanical Services Building E - Level B2 Sheet 1 of 2</p> <p>Drg No. CGY08-MTT-ZZZ-B2-DR-M-2004 Revision P3</p>
---	--	---

