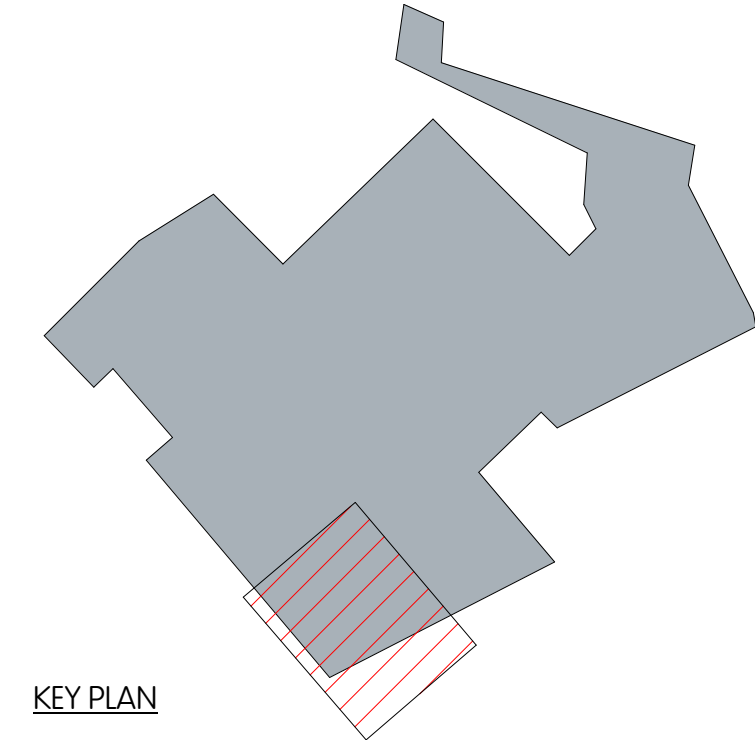


1. This drawing is for engineering services only and is to be read in conjunction with all relevant drawings, including structural, M/T drawings and the Contract Specification.
2. **THIS IS NOT AN INSTALLATION DRAWING.**
3. All services routes and equipment locations are indicative, actual location and configuration to be determined by contractor following completion of contractor design and coordination.
4. All pendants will only be installed in PD format.
5. All generalizations of the fire compartment are to be taken from the relevant fire compartment drawings. Firestop and fire rated cable penetration of the pipework is to be provided with fire collars.
6. All pipework to be supported in accordance with the manufacturer's requirements
7. All lay out points within the system are to be provided with drain off cocks.
8. Movement / expansion joints to be provided inline with the pipe manufacturers requirements
9. All pipework subject to freezing shall be complete with frost protection.
10. All fittings to be WRAS or KTW UK approved or have bscpe approval from the local water authority
11. All terminal fittings shall be fitted with accessible combined constant flow regulators and servicing valves as Viega CP961 screw down wonder valve to be used
12. All cold water storage platforms to be fitted with protection from leak detection and bunding
13. All hot water pipework to be traced heated using Raychem HWAT-M rated at 55°C
14. To meet Building Regulations Part G the TR2 rated line from the water heaters will need to be installed using copper pipework.
15. WHB to be fitted with thermostatic mixing valves (DMV) set at 42°C located behind access panels.
16. DWG 503 wash basins to be fitted with DGC M taps incorporating TRV's thermostatic mixing valve.
17. All pressure reducing valves to be fully adjustable and set to 1.5 bar, with a pressure of 1.5 bar complete with integral pressure gauge.
18. All shower fittings to be provided with integral thermostatic valves and complete with an anti scald device. Refer to Architects sanitaryware schedule.
19. Refer to drawing G500-MT-ZZZ-ZZ-ZZ-PD-0001 Public Health Services Design of Symbols.



Copyright by mIT.


No copies of the drawing, however produced and/or transmitted may be made or undertaken, without the express permission of mIT.

This drawing should not be scaled. All dimensions to be checked on site. Any discrepancies to be notified by email.

Issued as a technical note
11/09/16 (Rev. 22.02.16) and 03/03/16 (Rev. 20/03/16) and 04/03/16 (Rev. 22.02.16)

Based on technical model
03/06/16 (Rev. 22.02.16) and 06/06/16 (Rev. 20/03/16)

Rev.	Date	Description	Drawn	Checked
P3	12.08.2022	Stage 4 Issue	NK	JM
P2	09.05.2021	Stage 4 Issue	NK	JM
P1	14.01.2021	Stage 4 Issue	NK	JM
Rev.	Date	Description	Drawn	Checked



MTT/DRAWING

For Continuation See Drg No. CGY0B-MTT-ZZZ-B1-DR-P-2111

A 9 KINGSWAY
LONDON
WC2B 6XF

T +44 (0)20 7836 1133

F +44 (0)20 7836 1153

E info@mtt-limited.com

W mtt-limited.com

PM	T Ward
Cad	N Keyser
Date	February
Scale	1 : 50 @
Status	STAGE 4

Camden Goods Yard
Public Health Services
Building E - Level B1
Water Layout - Sheet 1 of 2

Org No. CGY0B-MTT-777-B1-DR-P-2110

Revision P3

