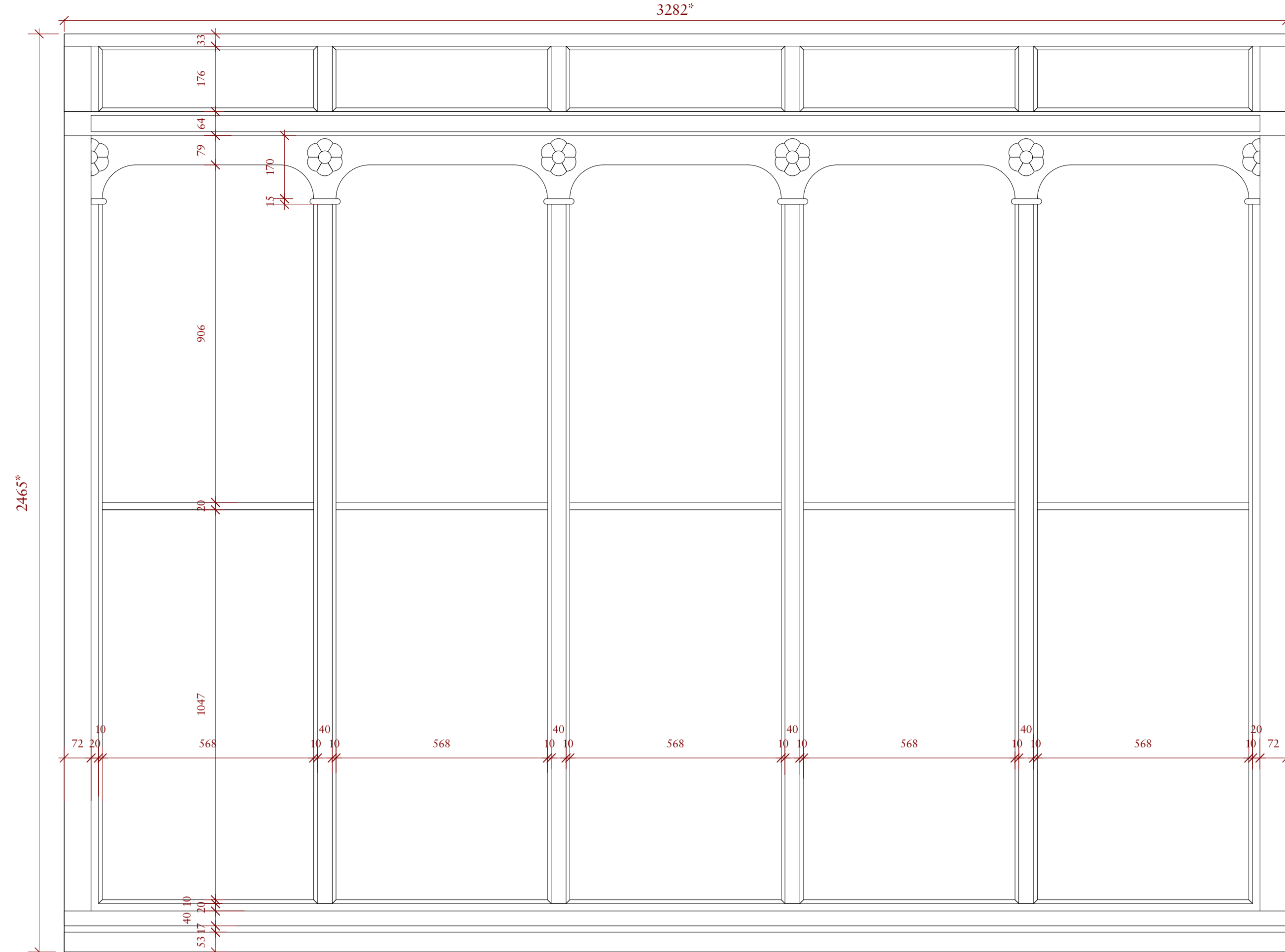


Existing Window WG.02



Elevation Drawing
1:10

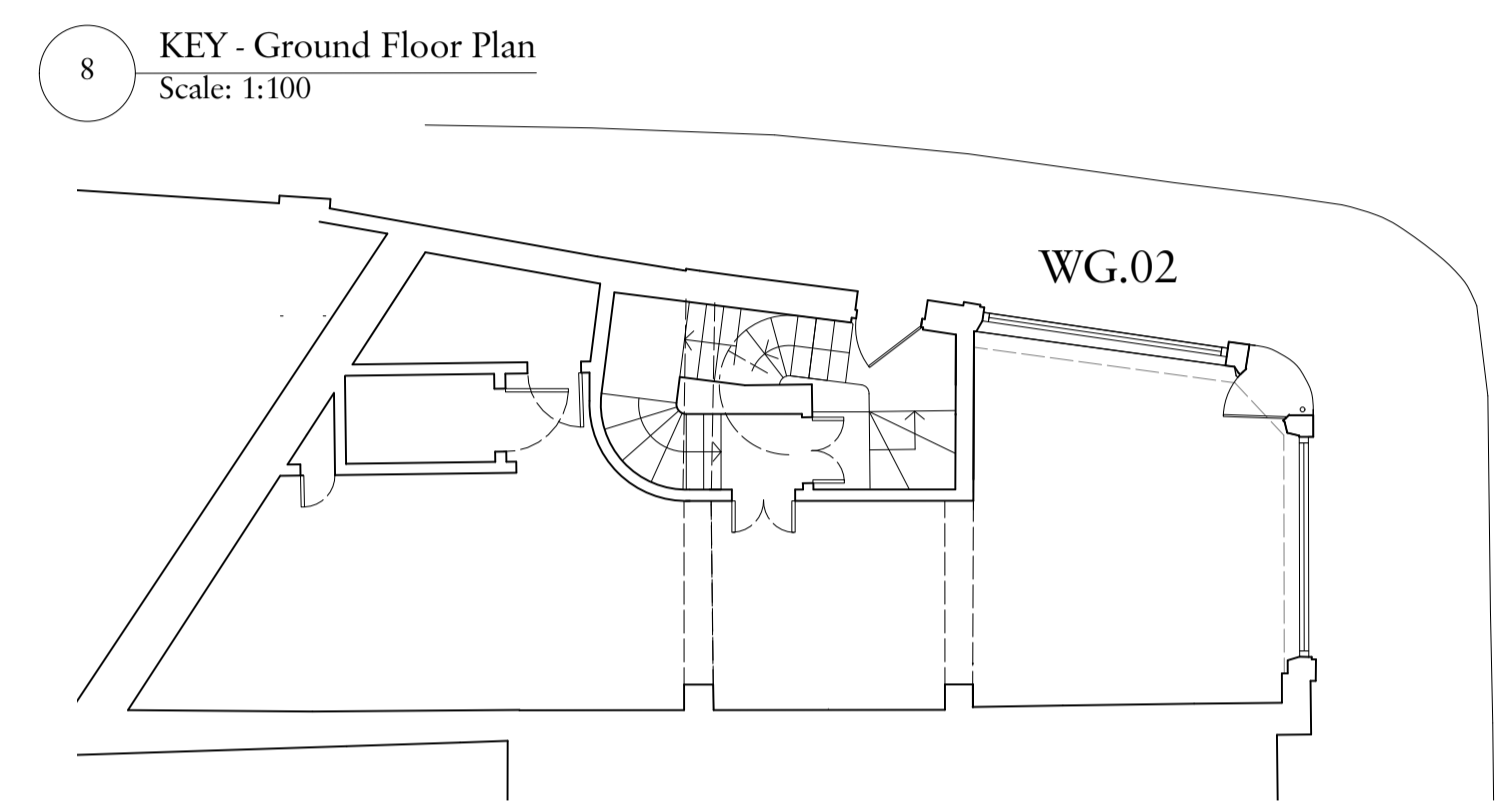
Window Reference	WG.02
Window Description	Double glazed, timber window with burglar proof security glass
Structural Opening	See drawing
Leaf Size	N/A
Finish	PPC Timber
Ironmongery Set	N/A
Glass Specification	Double glazing with air gap - outer pane Secure glazing

Important note

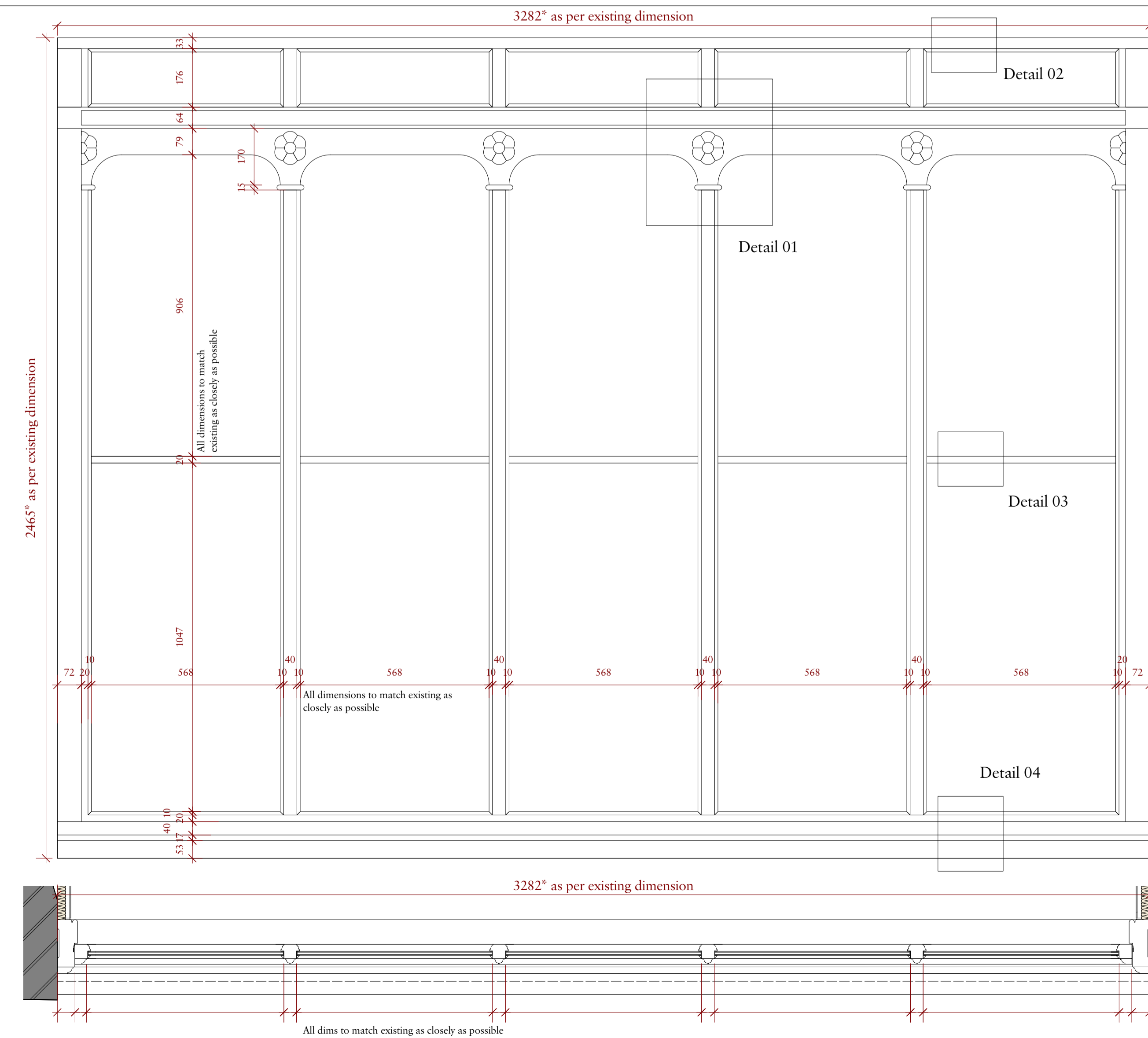
All dimensions in millimetres. Where dimensions are not given, drawings must not be scaled and the matter referred back to Charlton Brown Architects.

All dimensions and conditions are to be checked on site by the contractor prior to preparing drawings or commencing any work. The contractor is responsible for checking that there is no conflict between site dimensions and drawn dimensions.

In the event of any detail or dimensional conflict between Charlton Brown Architects drawings, the matter must be referred back to Charlton Brown Architects for clarification



Proposed Window WG.02

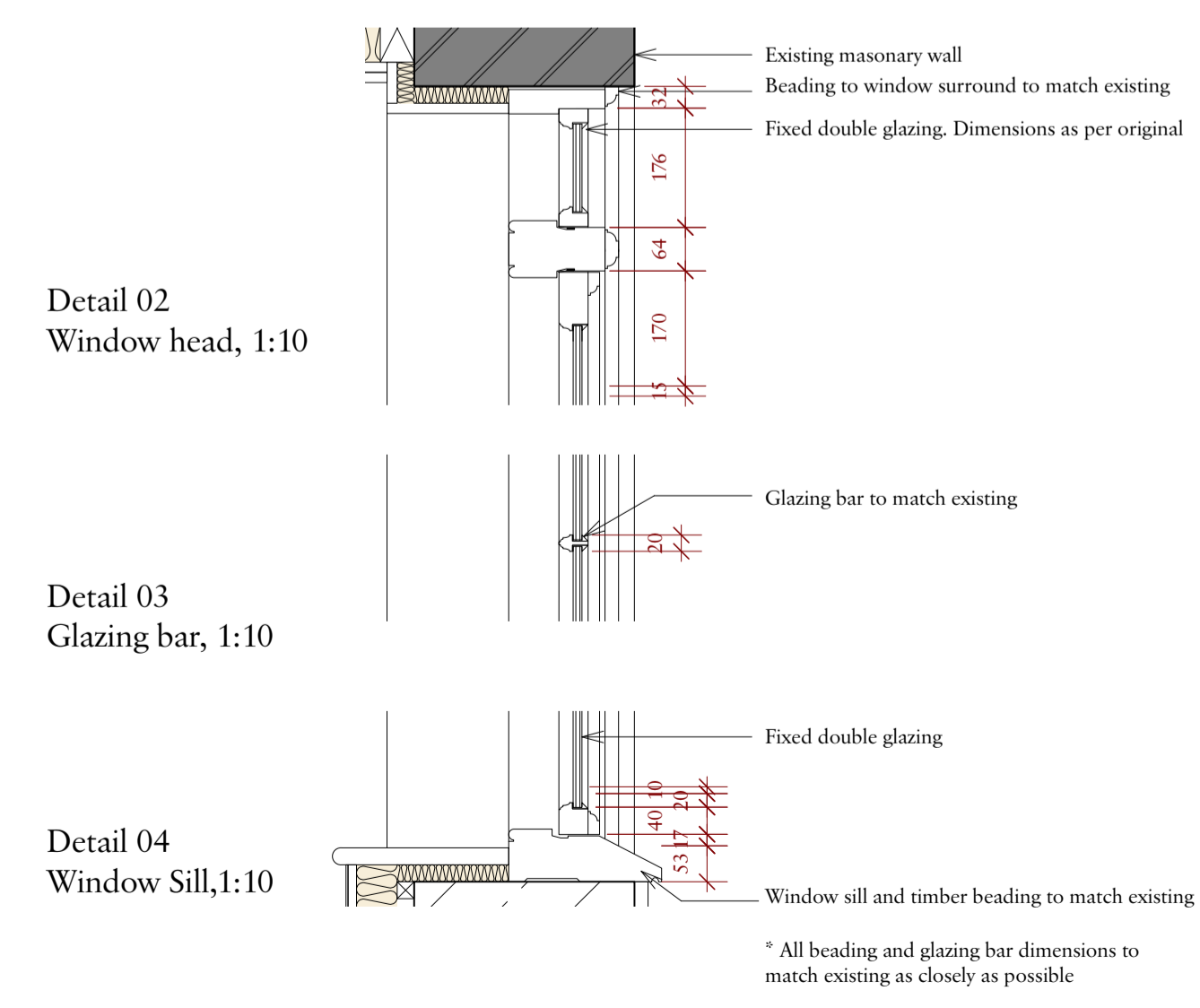


Elevation Drawing
1:10

Plan Drawing
1:10



Detail 01
Original decorative flower detail to be retained and re-used in new window



Rev	Date	Details	By
-----	------	---------	----

**Charlton Brown
Architecture & Interiors**

The Belvedere, 2 Back Lane, Hampstead, London, NW3 1HL
 Telephone +44(0)20 7794 1234
 Email office@charltonbrown.com
 Website www.charltonbrown.com

Client	Zina Drouche & Dylan McNeil		
Project	49 Willow Road, NW3 1TS		
Drawing Title	Window WG.02 - Details		
Date	19/12/2022	Drawn	Checked
Scale	1:10	SC	SJM
Issue Status	PLANNING		
Project Number	18 2 2	Drawing Number	Revision
		P5-PL-31-010	