

DO NOT SCALE

THE CONTRACTOR IS TO CHECK AND VERIFY ALL BUILDING AND SITE DIMENSIONS, LEVELS AND SEWER INVERT LEVELS AT CONNECTION POINTS BEFORE WORK STARTS.

THIS DRAWING IS TO BE READ AND CHECKED IN CONJUNCTION WITH ENGINEERS AND OTHER SPECIALIST DRAWINGS & SPECIFICATIONS.

THE DRAWING AND THE WORKS DEPICTED ARE THE COPYRIGHT OF PAWLK+WIEDMER LTD AND MAY NOT BE REPRODUCED EXCEPT BY WRITTEN PERMISSION.

NOTES

TO BE READ IN CONJUNCTION WITH DEMOLITION GA PLANS, SECTIONS, ELEVATIONS, FINISHES PLANS AND HERITAGE STATEMENT. REFER ALSO TO MEP ENGINEERS' STRIP OUT AND BUILDERSWORK INFORMATION AND LIGHTING LAYOUTS.

P3	02.12.2022	Planning Issue	NP
P2	03.11.2022	Plan Revisions	NP
P1	12/10/2022	General Plan Development	NP
Rev	Date	Reason For Issue	Chk

Key Plan

pawlik + wiedmer

17 Abernethy Road
London
SE13 5QJ
london@pawlikwiedmer.com
Registered in England & Wales No: 8155464
Registered Office: 27 Mortimer Street, W1T 3BL, UK

Client
Phoenix Theatre
Charing Cross Road
Ambassador Theatre Group

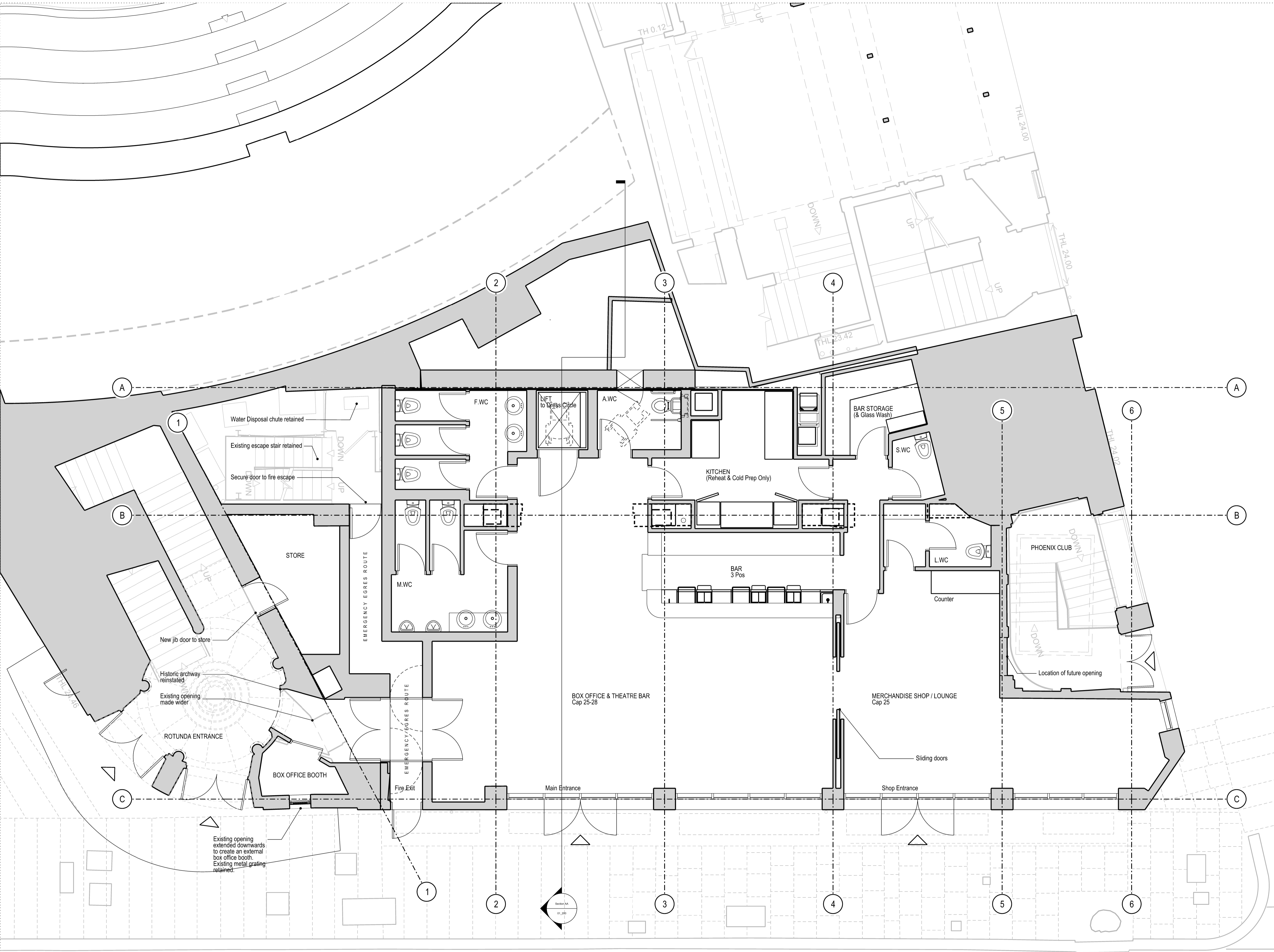
Project
Project Ash
Phoenix Theatre
Charing Cross Road
-

Title
Ground Floor
Plan
Proposed

Status
PLANNING

Project Number	Date	Checked By
559	SEPT 2022	-
Revision	Scale @ ISO A1	Approved By
P3	1:50@A1	-

Drawing Number
559-PWL-ZZ-ZZ-DR-A-01_100



DO NOT SCALE

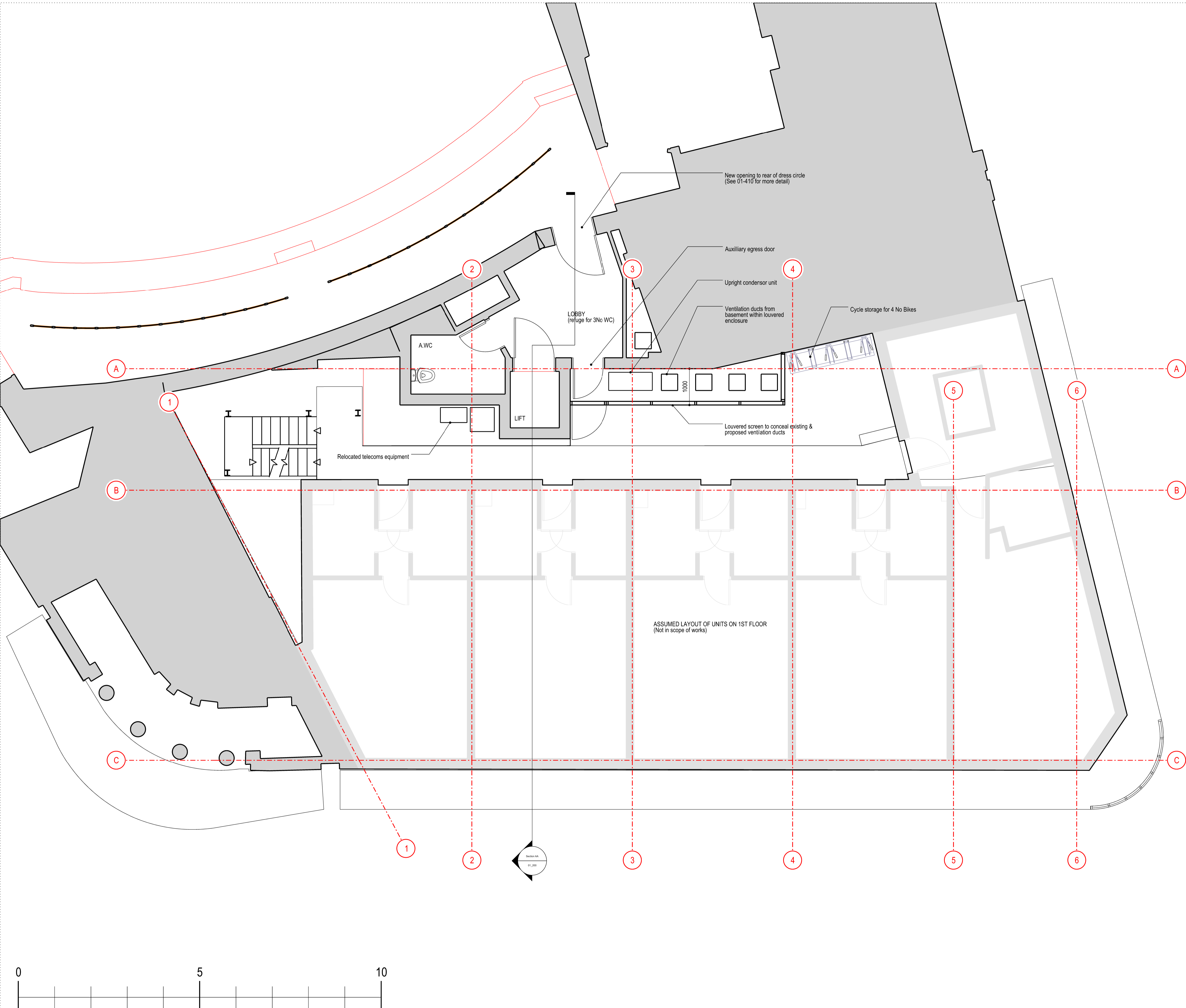
THE CONTRACTOR IS TO CHECK AND VERIFY ALL BUILDING AND SITE DIMENSIONS, LEVELS AND SEWER INVERT LEVELS AT CONNECTION POINTS BEFORE WORK STARTS.

THIS DRAWING IS TO BE READ AND CHECKED IN CONJUNCTION WITH ENGINEERS AND OTHER SPECIALIST DRAWINGS & SPECIFICATIONS.

THE DRAWING AND THE WORKS DEPICTED ARE THE COPYRIGHT OF PAWLIK+WIEDMER LTD AND MAY NOT BE REPRODUCED EXCEPT BY WRITTEN PERMISSION.

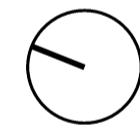
NOTES

TO BE READ IN CONJUNCTION WITH DEMOLITION GA PLANS, SECTIONS, ELEVATIONS, FINISHES PLANS AND HERITAGE STATEMENT. REFER ALSO TO MEP ENGINEERS' STRIP OUT AND BUILDERSWORK INFORMATION AND LIGHTING LAYOUTS .



P2	02.12.2022	PLANNING ISSUE	NP
P1	03.11.2022	Plan Revisions	NP
Rev	Date	Reason For Issue	Chk

Key Plan



pawlik + wiedmer

17 Abernethy Road
London
SE13 5QJ
london@pawlikwiedmer.com
Registered in England & Wales No: 8155464
Registered Office: 27 Mortimer Street, W1T 3BL, UK

Client
Phoenix Theatre
Charing Cross Road
Ambassador Theatre Group

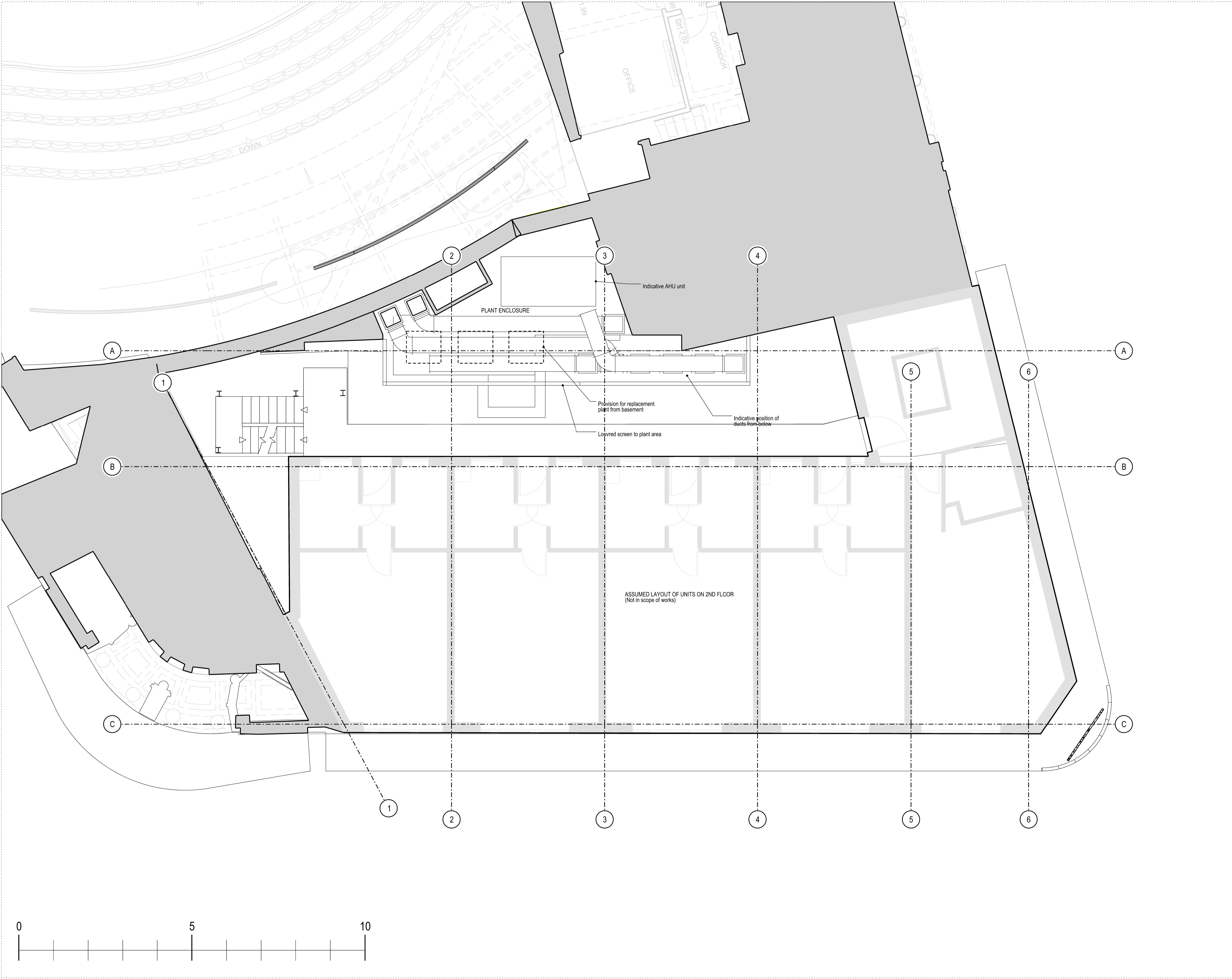
Project
Project Ash
Phoenix Theatre
Charing Cross Road
-

Title
Dress Circle
Plan
Proposed

Status
PLANNING

Project Number	Date	Checked By
559	SEPT 2022	-
Revision	Scale @ ISO A1	Approved By
P1	1:50@A1	-

Drawing Number
559-PWL-ZZ-ZZ-DR-A-01_110



DO NOT SCALE

THE CONTRACTOR IS TO CHECK AND VERIFY ALL BUILDING AND SITE DIMENSIONS, LEVELS AND SEWER INVERT LEVELS AT CONNECTION POINTS BEFORE WORK STARTS.

THIS DRAWING IS TO BE READ AND CHECKED IN CONJUNCTION WITH ENGINEERS AND OTHER SPECIALIST DRAWINGS & SPECIFICATIONS.

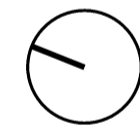
THE DRAWING AND THE WORKS DEPICTED ARE THE COPYRIGHT OF PAWLK+WIEDMER LTD AND MAY NOT BE REPRODUCED EXCEPT BY WRITTEN PERMISSION.

NOTES

TO BE READ IN CONJUNCTION WITH DEMOLITION GA PLANS, SECTIONS, ELEVATIONS, FINISHES PLANS AND HERITAGE STATEMENT. REFER ALSO TO MEP ENGINEERS' STRIP OUT AND BUILDERSWORK INFORMATION AND LIGHTING LAYOUTS.

P2	02.12.2022	Plant area modified	NP
P1	03.11.2022	General Update	NP
Rev	Date	Reason For Issue	Chk

Key Plan



pawlik + wiedmer

17 Abernethy Road
London
SE13 5QJ
london@pawlikwiedmer.com
Registered in England & Wales No: 8155464
Registered Office: 27 Mortimer Street, W1T 3BL, UK

Client
Phoenix Theatre
Charing Cross Road
Ambassador Theatre Group

Project
Project Ash
Phoenix Theatre
Charing Cross Road
-

Title
Second Floor
Plan
Proposed

Status
PLANNING

Project Number 559	Date SEPT 2022	Checked By -
Revision P1	Scale @ ISO A1 1:50@A1	Approved By -

Drawing Number
559-PWL-ZZ-ZZ-DR-A-01_120

THE CONTRACTOR IS TO CHECK AND VERIFY ALL BUILDING AND SITE DIMENSIONS, LEVELS AND SEWER INVERT LEVELS AT CONNECTION POINTS BEFORE WORK STARTS.

THE DRAWING AND THE WORKS DEPICTED ARE THE
COPYRIGHT OF PAWLIK+WIEDMER LTD AND MAY NOT BE
REPRODUCED EXCEPT BY WRITTEN PERMISSION.

TO BE READ IN CONJUNCTION WITH DEMOLITION GA
PLANS, SECTIONS, ELEVATIONS, FINISHES PLANS AND
HERITAGE STATEMENT. REFER ALSO TO MEP
ENGINEERS' STRIP OUT AND BUILDERSWORK
INFORMATION AND LIGHTING LAYOUTS.

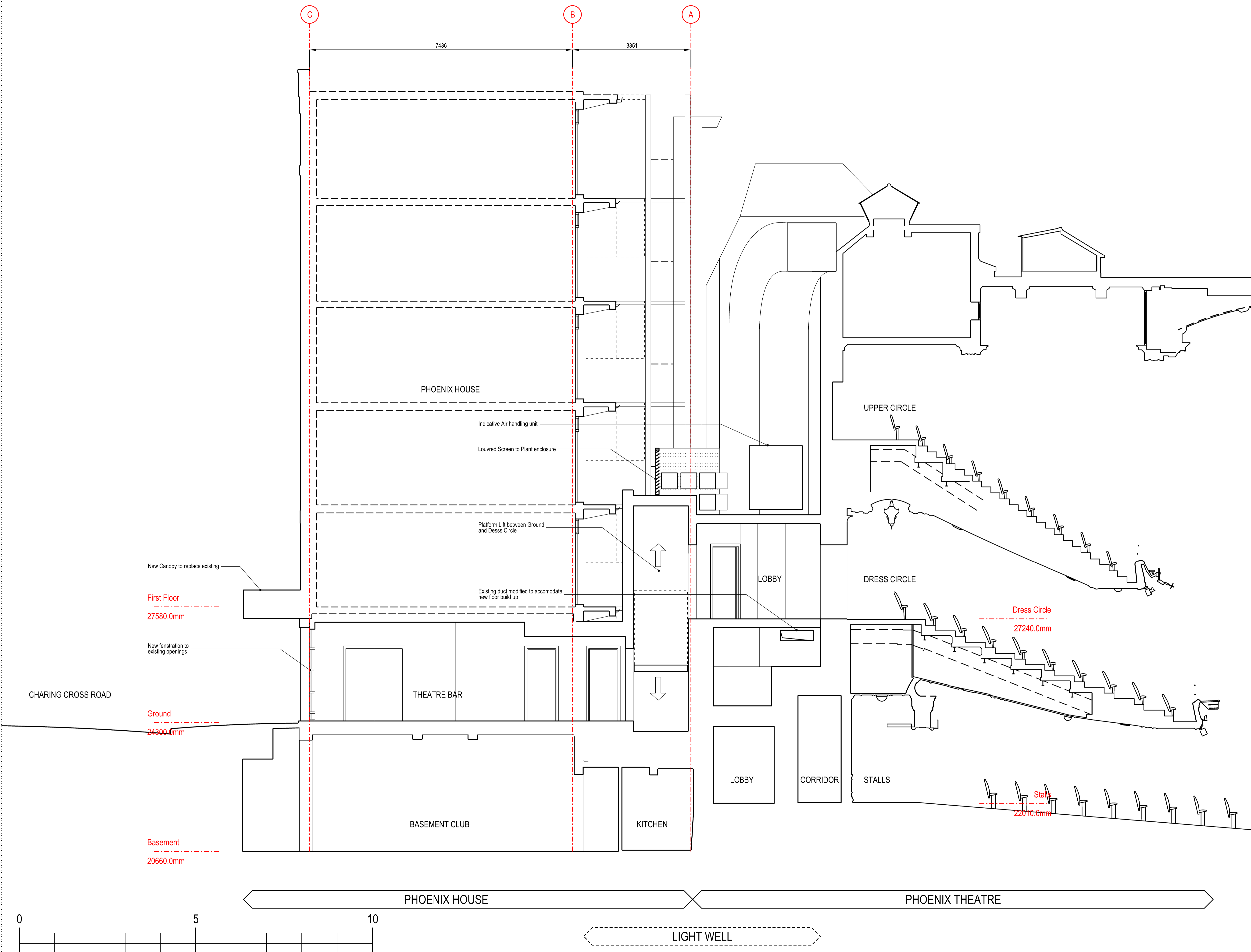
Key Plan

17 Abernethy Road
London
SE13 5QJ
london@pawlikwiedmer.com
Registered in England & Wales No: 8155464
Registered Office: 27 Mortimer Street, W1T 3BL, UK

Project
Project Ash
Phoenix Theatre
Charing Cross Road
-

PRELIMINARY

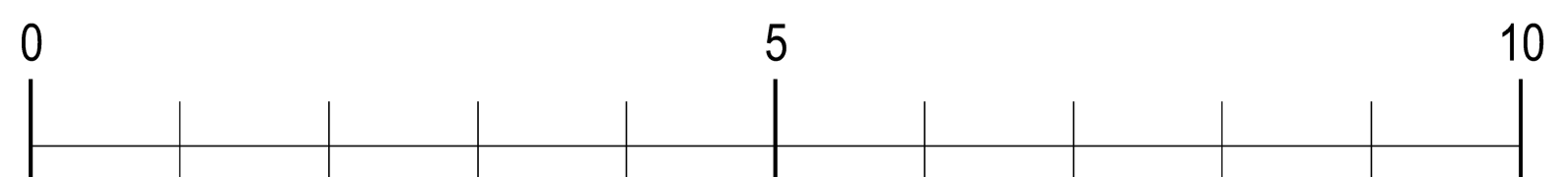
Drawing Number
559-PWL-ZZ-ZZ-DR-A-01 200



THE CONTRACTOR IS TO CHECK AND VERIFY ALL BUILDING AND SITE DIMENSIONS, LEVELS AND SEWER INVERT LEVELS AT CONNECTION POINTS BEFORE WORK STARTS.

THE DRAWING AND THE WORKS DEPICTED ARE THE
COPYRIGHT OF PAWLIK+WIEDMER LTD AND MAY NOT BE
REPRODUCED EXCEPT BY WRITTEN PERMISSION

TO BE READ IN CONJUNCTION WITH DEMOLITION GA
PLANS, SECTIONS, ELEVATIONS, FINISHES PLANS AND
HERITAGE STATEMENT. REFER ALSO TO MEP
ENGINEERS' STRIP OUT AND BUILDERSWORK
INFORMATION AND LIGHTING LAYOUTS.

: Key Plan

17 Abernethy Road
London
SE13 5QJ
london@pawlikwiedmer.com
Registered in England & Wales No: 8155464
Registered Office: 27 Mortimer Street, W1T 3BL, UK

Project
Project Ash
Phoenix Theatre
Charing Cross Road
-

Project Number 559	Date SEPT 2022	Checked By -
Revision -	Scale @ ISO A1 1:50@A1	Approved By -

Drawing Number
559-PWL-ZZ-ZZ-DR-A-01 320

THE CONTRACTOR IS TO CHECK AND VERIFY ALL BUILDING AND SITE DIMENSIONS, LEVELS AND SEWER INVERT LEVELS AT CONNECTION POINTS BEFORE WORK STARTS.

THE DRAWING AND THE WORKS DEPICTED ARE THE
COPYRIGHT OF PAWLIK+WIEDMER LTD AND MAY NOT BE
REPRODUCED EXCEPT BY WRITTEN PERMISSION

TO BE READ IN CONJUNCTION WITH DEMOLITION GA
PLANS, SECTIONS, ELEVATIONS, FINISHES PLANS AND
HERITAGE STATEMENT. REFER ALSO TO MEP
ENGINEERS' STRIP OUT AND BUILDERSWORK
INFORMATION AND LIGHTING LAYOUTS.

: Key Plan

pawlik + wiedmer

Client
Phoenix Theatre
Charing Cross Road
Ambassador Theatre Group

Status
PLANNING

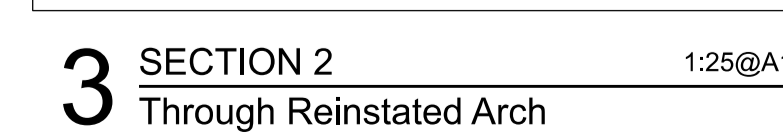
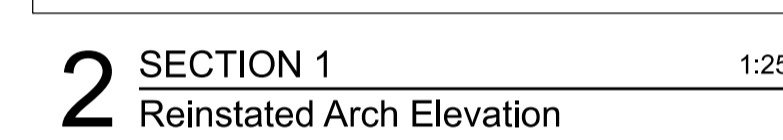
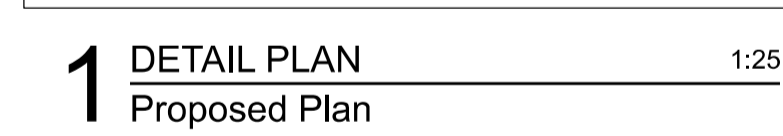
Drawing Number
559-PWL-ZZ-ZZ-DR-A-01 330



THE CONTRACTOR IS TO CHECK AND VERIFY ALL BUILDING AND SITE DIMENSIONS, LEVELS AND SEWER INVERT LEVELS AT CONNECTION POINTS BEFORE WORK STARTS.

THE DRAWING AND THE WORKS DEPICTED ARE THE
COPYRIGHT OF PAWLIK+WIEDMER LTD AND MAY NOT BE
REPRODUCED EXCEPT BY WRITTEN PERMISSION.

TO BE READ IN CONJUNCTION WITH DEMOLITION GA
PLANS, SECTIONS, ELEVATIONS, FINISHES PLANS AND
HERITAGE STATEMENT. REFER ALSO TO MEP
ENGINEERS' STRIP OUT AND BUILDERSWORK
INFORMATION AND LIGHTING LAYOUTS .



THE CONTRACTOR IS TO CHECK AND VERIFY ALL BUILDING AND SITE DIMENSIONS, LEVELS AND SEWER INVERT LEVELS AT CONNECTION POINTS BEFORE WORK STARTS.

THE DRAWING AND THE WORKS DEPICTED ARE THE
COPYRIGHT OF PAWLIK+WIEDMER LTD AND MAY NOT BE
REPRODUCED EXCEPT BY WRITTEN PERMISSION.

TO BE READ IN CONJUNCTION WITH DEMOLITION GA
PLANS, SECTIONS, ELEVATIONS, FINISHES PLANS AND
HERITAGE STATEMENT. REFER ALSO TO MEP
ENGINEERS' STRIP OUT AND BUILDERSWORK
INFORMATION AND LIGHTING LAYOUTS.

: Key Plan

17 Abernethy Road
London
SE13 5QJ
london@pawlikwiedmer.com
Registered in England & Wales No: 8155464
Registered Office: 27 Mortimer Street, W1T 3BL, U

Project
Project Ash
Phoenix Theatre
Charing Cross Road
-

Status
PLANNING

Drawing Number
559-PWL-ZZ-ZZ-DR-A-01 410

