

: THE CONTRACTOR IS TO CHECK AND VERIFY ALL
: BUILDING AND SITE DIMENSIONS, LEVELS AND SEWER
: INVERT LEVELS AT CONNECTION POINTS BEFORE WORK
: STARTS.

THIS DRAWING IS TO BE READ AND CHECKED IN
CONJUNCTION WITH ENGINEERS AND OTHER
SPECIALIST DRAWINGS & SPECIFICATIONS.

THE DRAWING AND THE WORKS DEPICTED ARE THE
COPYRIGHT OF PAWLIK+WIEDMER LTD AND MAY NOT BE
REPRODUCED EXCEPT BY WRITTEN PERMISSION.

TO BE READ IN CONJUNCTION WITH DEMOLITION GA
PLANS, SECTIONS, ELEVATIONS, FINISHES PLANS AND
HERITAGE STATEMENT. REFER ALSO TO MEP
ENGINEERS' STRIP OUT AND BUILDERSWORK
INFORMATION AND LIGHTING LAYOUTS .

#	dd/mm/yy	Issue Reason	-
Rev	Date	Reason For Issue	CRK

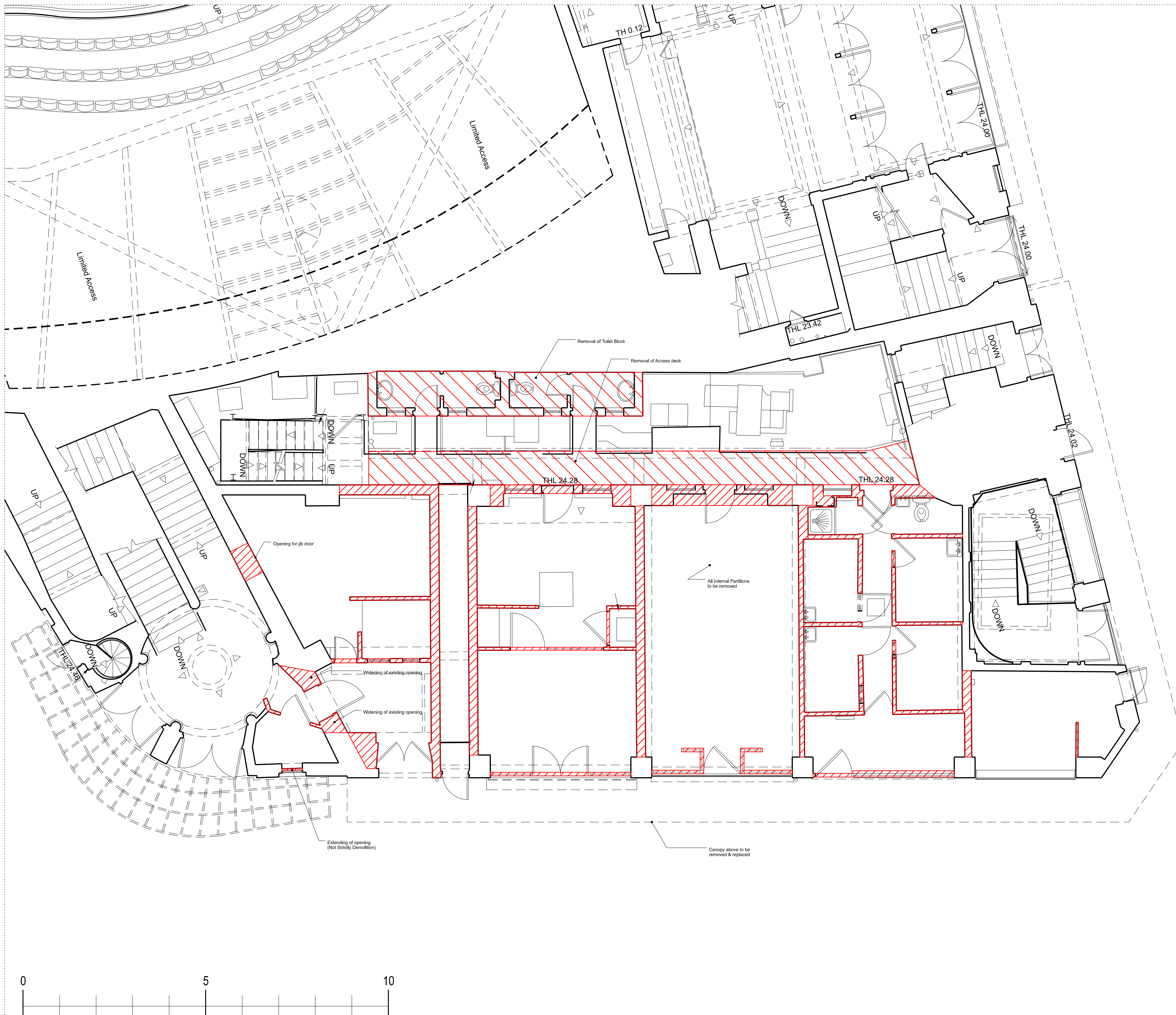
17 Abernethy Road
London
SE13 5QJ
london@pawlikwiedmer.com
Registered in England & Wales No: 8155464
Registered Office: 27 Mortimer Street, W1T 3BL, UK

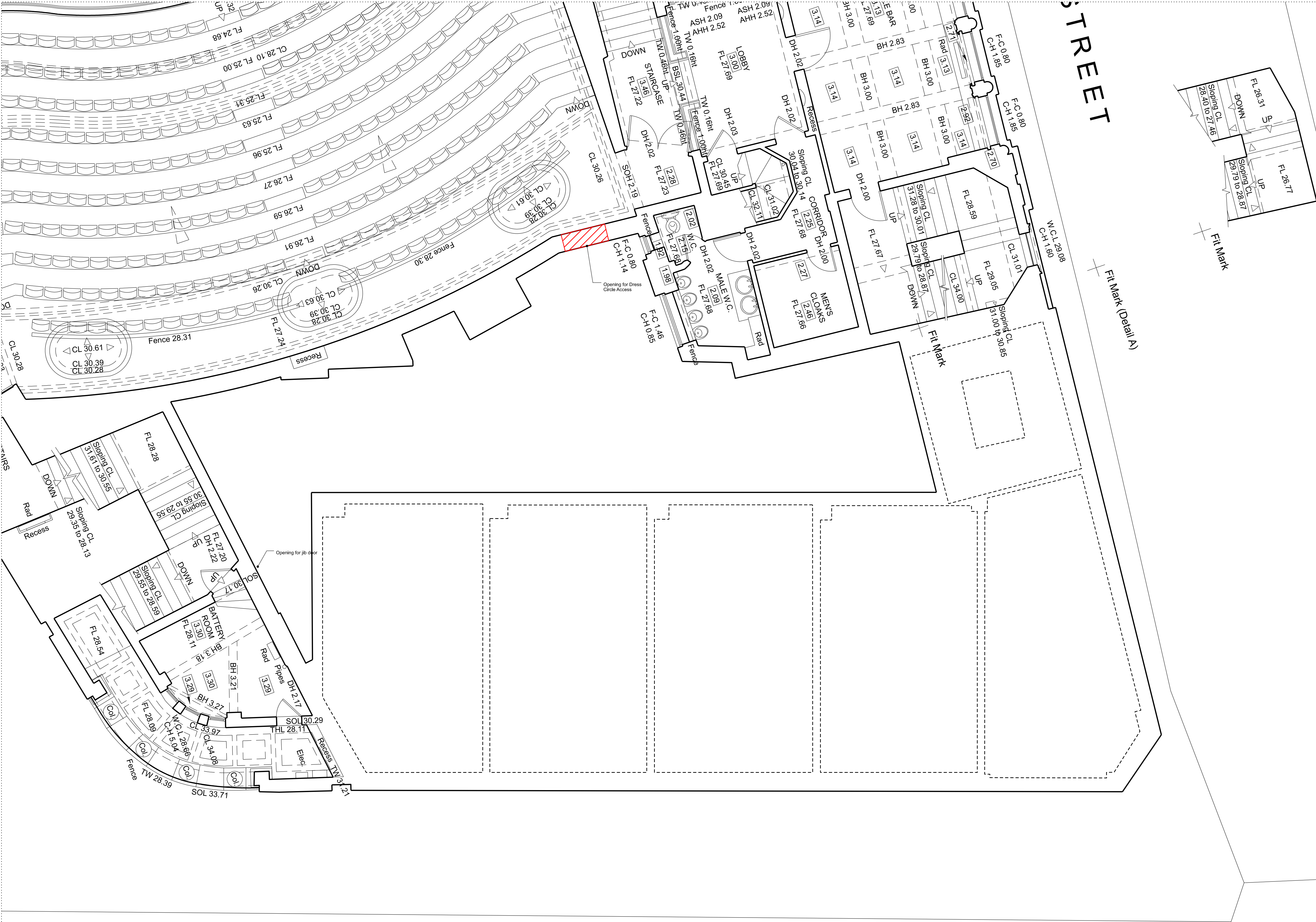
Project
Project Ash
Phoenix Theatre
Charing Cross Road

Status
PLANNING

Project Number 559	Date SEPT 2022	Checked By -
Revision -	Scale @ ISO A1 1:50@A1	Approved By -

Drawing Number
559-PWL-ZZ-ZZ-DR-A-DM_100





DO NOT SCALE

THE CONTRACTOR IS TO CHECK AND VERIFY ALL BUILDING AND SITE DIMENSIONS, LEVELS AND SEWER INVERT LEVELS AT CONNECTION POINTS BEFORE WORK STARTS.

THIS DRAWING IS TO BE READ AND CHECKED IN CONJUNCTION WITH ENGINEERS AND OTHER SPECIALIST DRAWINGS & SPECIFICATIONS.

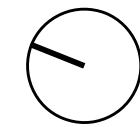
THE DRAWING AND THE WORKS DEPICTED ARE THE COPYRIGHT OF PAWLK+WIEDMER LTD AND MAY NOT BE REPRODUCED EXCEPT BY WRITTEN PERMISSION.

NOTES

TO BE READ IN CONJUNCTION WITH DEMOLITION GA PLANS, SECTIONS, ELEVATIONS, FINISHES PLANS AND HERITAGE STATEMENT. REFER ALSO TO MEP ENGINEERS' STRIP OUT AND BUILDERSWORK INFORMATION AND LIGHTING LAYOUTS.

#	dd/mm/yy	Issue Reason	-
Rev	Date	Reason For Issue	Chk

Key Plan



pawlik + wiedmer

17 Abernethy Road
London
SE13 5QJ
london@pawlikwiedmer.com
Registered in England & Wales No: 8155464
Registered Office: 27 Mortimer Street, W1T 3BL, UK

Client
Phoenix Theatre
Charing Cross Road
Ambassador Theatre Group

Project
Project Ash
Phoenix Theatre
Charing Cross Road
-

Title
First Floor
Plan
Demolition

Status
PLANNING

Project Number 559	Date SEPT 2022	Checked By -
Revision -	Scale @ ISO A1 1:50@A1	Approved By -

Drawing Number
559-PWL-ZZ-ZZ-DR-A-DM_110

THE CONTRACTOR IS TO CHECK AND VERIFY ALL BUILDING AND SITE DIMENSIONS, LEVELS AND SEWER INVERT LEVELS AT CONNECTION POINTS BEFORE WORK STARTS.

THE DRAWING AND THE WORKS DEPICTED ARE THE
COPYRIGHT OF PAWLIK+WIEDMER LTD AND MAY NOT BE
REPRODUCED EXCEPT BY WRITTEN PERMISSION.

TO BE READ IN CONJUNCTION WITH DEMOLITION GA
PLANS, SECTIONS, ELEVATIONS, FINISHES PLANS AND
HERITAGE STATEMENT. REFER ALSO TO MEP
ENGINEERS' STRIP OUT AND BUILDERSWORK
INFORMATION AND LIGHTING LAYOUTS .

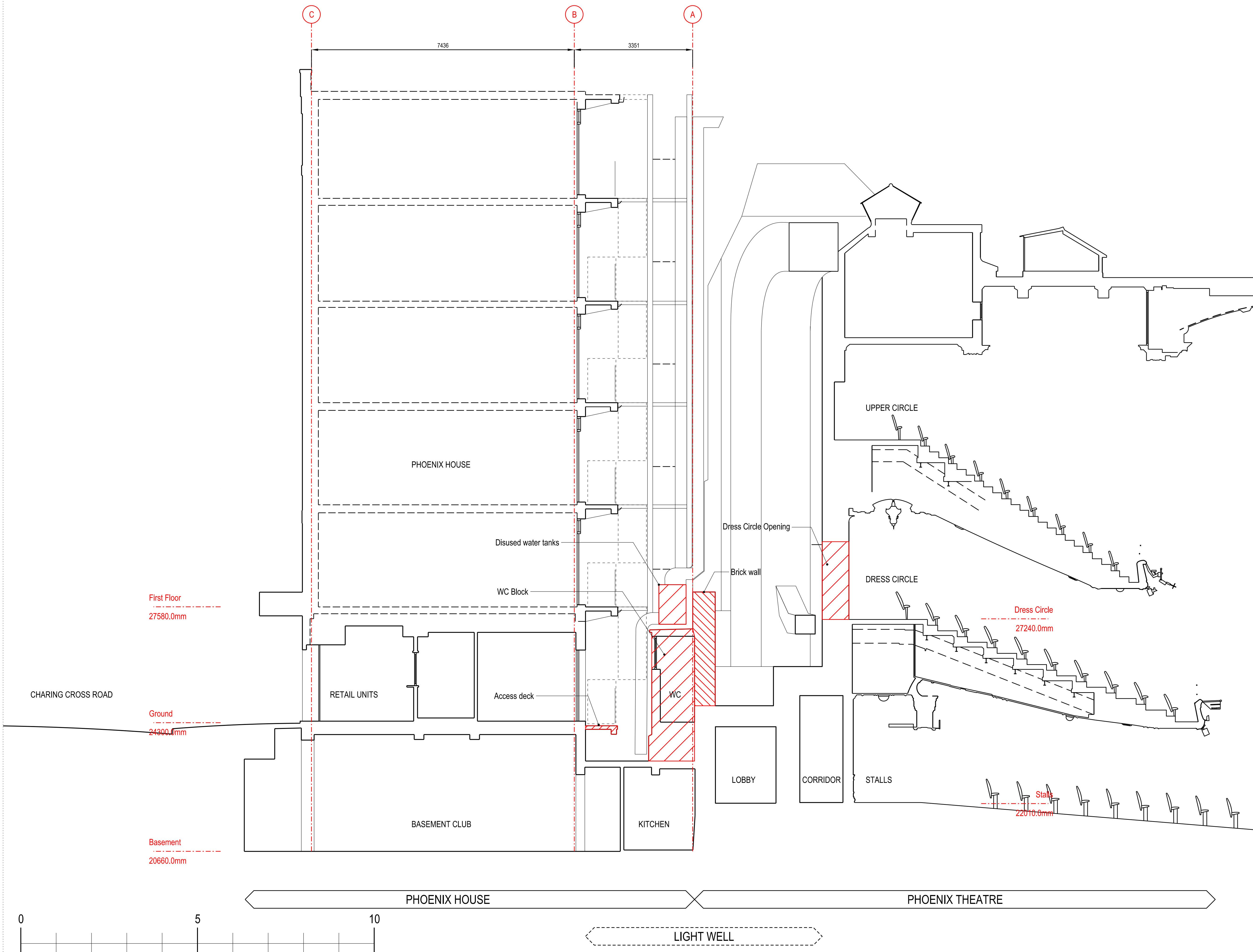
Key Plan

17 Abernethy Road
London
SE13 5QJ
london@pawlikwiedmer.com
Registered in England & Wales No: 8155464
Registered Office: 27 Mortimer Street, W1T 3BL, UK

Project
Project Ash
Phoenix Theatre
Charing Cross Road
-

Status
PLANNING

Drawing Number
559-PWL-ZZ-ZZ-DR-A-DM 200

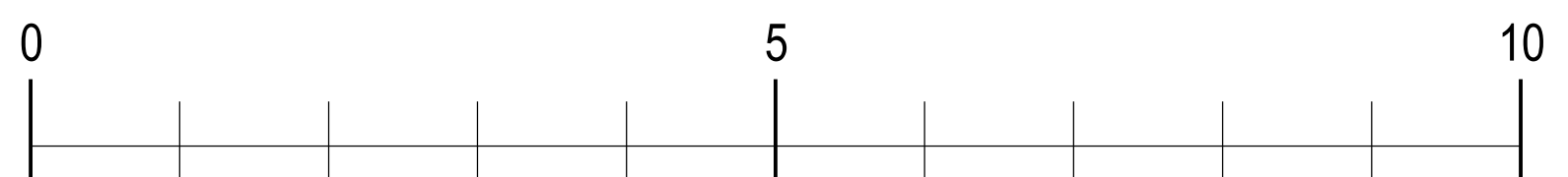


THE CONTRACTOR IS TO CHECK AND VERIFY ALL BUILDING AND SITE DIMENSIONS, LEVELS AND SEWER INVERT LEVELS AT CONNECTION POINTS BEFORE WORK STARTS.

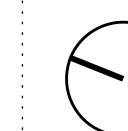
THIS DRAWING IS TO BE READ AND CHECKED IN
CONJUNCTION WITH ENGINEERS AND OTHER
SPECIALIST DRAWINGS & SPECIFICATIONS.

THE DRAWING AND THE WORKS DEPICTED ARE THE
COPYRIGHT OF PAWLIK+WIEDMER LTD AND MAY NOT BE
REPRODUCED EXCEPT BY WRITTEN PERMISSION.

TO BE READ IN CONJUNCTION WITH DEMOLITION GA
PLANS, SECTIONS, ELEVATIONS, FINISHES PLANS AND
HERITAGE STATEMENT. REFER ALSO TO MEP
ENGINEERS' STRIP OUT AND BUILDERSWORK
INFORMATION AND LIGHTING LAYOUTS.

[illegible]

Key Plan



17 Abernethy Road
London
SE13 5QJ
london@pawlikwiedmer.com
Registered in England & Wales No: 8155464
Registered Office: 27 Mortimer Street, W1T 3BL, U.K.

Close

Phoenix Theatre
Charing Cross Road
Ambassador Theatre Group

Desi

Project
Project Ash
Phoenix Theatre
Charing Cross Road

Title

West Elevation
Charing Cross Road
Demolition

Status
PLANNING

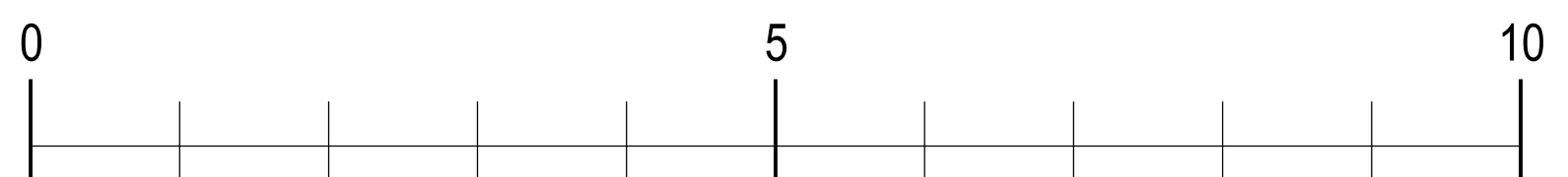
Project Number 559	Date SEPT 2022	Checked By -
Revision -	Scale @ ISO A1 1:50@A1	Approved By -

Drawing Number
559-PWL-ZZ-ZZ-DR-A-DM 330

THE CONTRACTOR IS TO CHECK AND VERIFY ALL BUILDING AND SITE DIMENSIONS, LEVELS AND SEWER INVERT LEVELS AT CONNECTION POINTS BEFORE WORK STARTS.

THE DRAWING AND THE WORKS DEPICTED ARE THE
COPYRIGHT OF PAWLIK+WIEDMER LTD AND MAY NOT BE
REPRODUCED EXCEPT BY WRITTEN PERMISSION.

TO BE READ IN CONJUNCTION WITH DEMOLITION GA
PLANS, SECTIONS, ELEVATIONS, FINISHES PLANS AND
HERITAGE STATEMENT. REFER ALSO TO MEP
ENGINEERS' STRIP OUT AND BUILDERSWORK
INFORMATION AND LIGHTING LAYOUTS.

Key Plan

17 Abernethy Road
London
SE13 5QJ
london@pawlikwiedmer.com
Registered in England & Wales No: 8155464
Registered Office: 27 Mortimer Street, W1T 3BL, UK

Project
Project Ash
Phoenix Theatre
Charing Cross Road

Status
PLANNING

Drawing Number
559-PWL-ZZ-ZZ-DR-A-DM 320