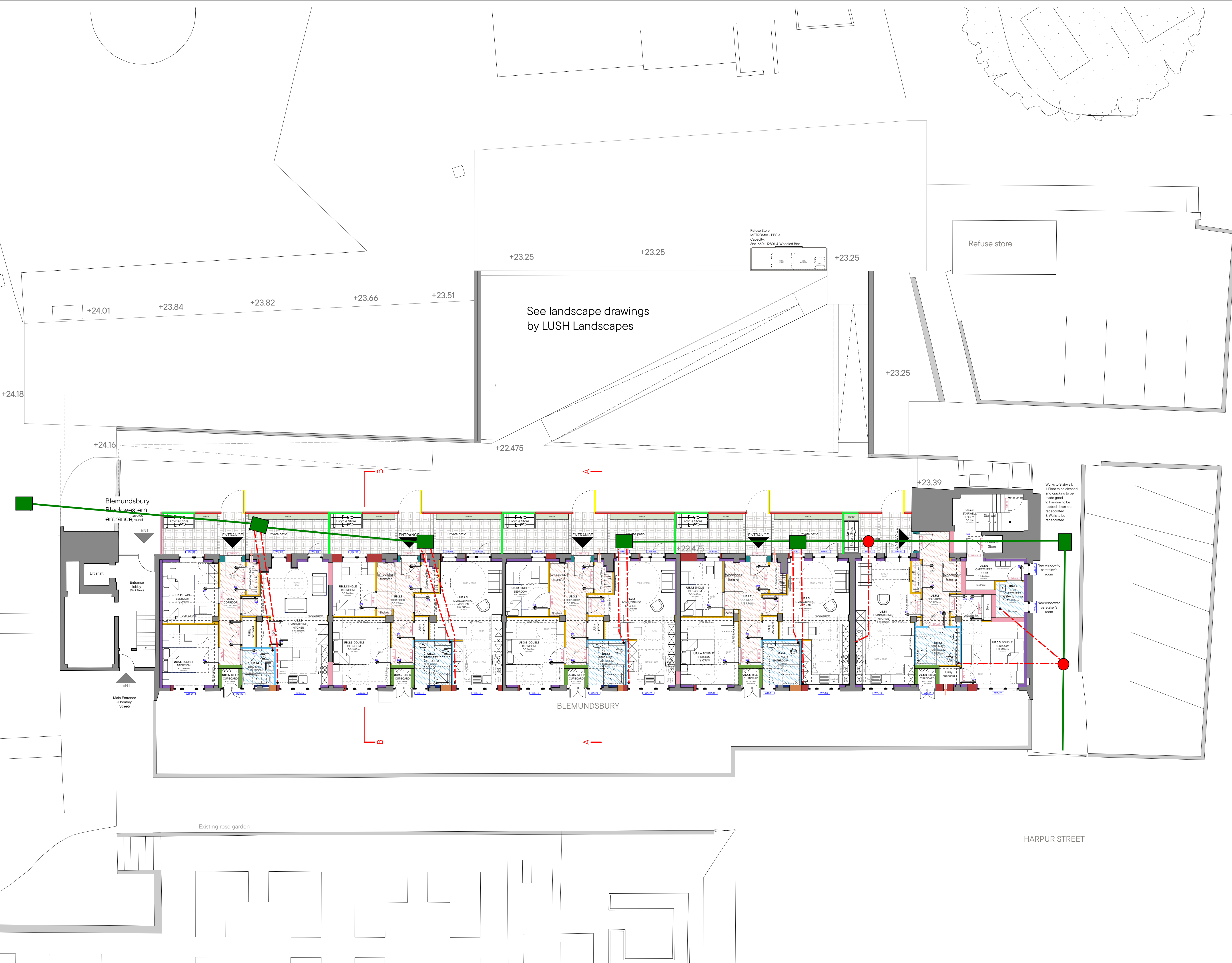


3. Drainage Strategy	3a. Discharge Rates & Required Storage				
		Greenfield (GF) runoff rate (l/s)	Existing discharge rate (l/s)	Required storage for GF rate (m ³)	Proposed discharge rate (l/s)
	Q _{bar}	N/A			
	1 in 1	N/A	14.5	N/A	14.5
	1 in 30	N/A	36	N/A	36
	1 in 100	N/A	46.3	N/A	46.3
	1 in 100 + CC			N/A	
	Climate change allowance used		40%		
	3b. Principal Method of Flow Control		Retain existing free discharge		
	3c. Proposed SuDS Measures				
			Catchment area (m ²)	Plan area (m ²)	Storage vol. (m ³)
	Rainwater harvesting		0		0
	Infiltration systems		0		0
	Green roofs		0	0	0
	Blue roofs		0	0	0
	Filter strips		0	0	0
	Filter drains		0	0	0
Bioretention / tree pits		0	0	0	
Pervious pavements		0	0	0	
Swales		0	0	0	
Basins/ponds		0	0	0	
Attenuation tanks		0		0	
Total		0	0	0	

4. Supporting Information	4a. Discharge & Drainage Strategy	Page/section of drainage report
	Infiltration feasibility (2a) – geotechnical factual and interpretive reports, including infiltration results	Refer to Section 2
	Drainage hierarchy (2b)	Refer to Section 5
	Proposed discharge details (2c) – utility plans, correspondence / approval from owner/regulator of discharge location	Refer to Section 5
	Discharge rates & storage (3a) – detailed hydrologic and hydraulic calculations	Refer to Section 5
	Proposed SuDS measures & specifications (3b)	Refer to Section 5
	4b. Other Supporting Details	Page/section of drainage report
	Detailed Development Layout	Refer to Section 3
	Detailed drainage design drawings, including exceedance flow routes	Refer to section 5
	Detailed landscaping plans	Refer to section 3
	Maintenance strategy	Refer to section 7
	Demonstration of how the proposed SuDS measures improve:	
	a) water quality of the runoff?	Refer to section 5
	b) biodiversity?	Refer to section 5
	c) amenity?	Refer to section 5

APPENDIX G

INDICATIVE DRAINAGE SKETCH

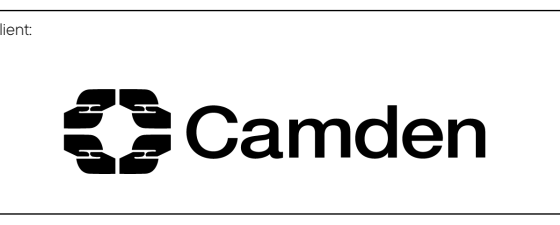


- Notes:
1. Do not scale from this drawing.
 2. All dimensions to be verified prior to the commencement of any work or the production of any shop drawings.
 3. Matthew Lloyd Architects (MLA) shall be notified in writing of any discrepancies.
 4. Survey and boundaries indicative only.
 5. Proposals are subject to utilities surveys and specialist consultants' input & coordination.
 6. Any areas indicated are approximate and indicative only.
 7. Where an item is covered by drawings in different scales the larger scale drawing is to be worked to.
 8. Drawing to be read in conjunction with relevant consultant's drawings and specifications.
 9. Where MLA services on a project do not include for site inspections and work surveys, MLA do not warrant that 'as built' issue drawings are a complete and accurate record of what has been built.
 10. MLA shall not be liable for the consequences of any use, misuse or variation of this drawing for any purpose other than that for which it was originally prepared.
 11. This title block is copyright of MLA and should not be used, removed, or altered without permission and clear identification.

- Key:
- WT01: EXTERNAL INFILL
 - WT02: EXTERNAL WALL LINING
 - WT03: EXTERNAL WALL TO BATHROOM/ WC
 - WT04: EXTERNAL BATHROOM/WC INFILL
 - WT05: ENTRANCE WALL
 - WT06: RISER CUPBOARD PARTITION
 - PT01: TYPICAL STUD PARTITION
 - PT02: PARTY WALL BLOCKWORK
 - PT03: TYPICAL BATHROOM/WC WALL
 - DROPPED CEILING FOR SERVICE RUNS F-C: 2100mm
 - DROPPED CEILING FOR BATHROOM/ WC F-C: 2315mm
 - PAT01: TYPICAL PATIO FENCE
 - PAT02: TYPICAL PATIO EDGE (1.8m)
 - PAT03: TYPICAL PATIO GATE
 - PAT04: TYPICAL PATIO MESH FENCE

Revisions:

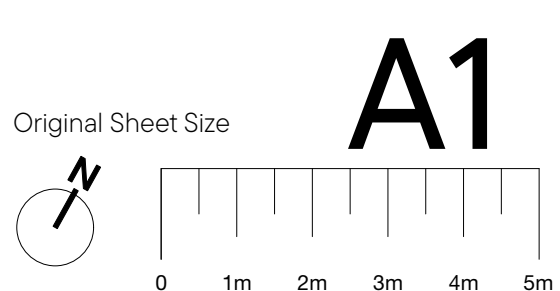
TENDER



Matthew Lloyd Architects

1b The Hangar
Perseverance Works
38 Kingsland Road
London E2 8DD
T 020 7613 1934
email: mail@matthewlloyd.co.uk
www.matthewlloyd.co.uk

©2022



Date:	Scale:	Checked by:	Drawn by:
Sep-22	1:100 @ A1	ASp	GP
Project:			
TYBALDS ESTATE CAMDEN			
Drawing title:			
PROPOSED BLEMUNDSBURY - LOWER GROUND FLOOR PLAN			
Reference:	Dwg. No:	Rev:	
TE	UB-200	T03	