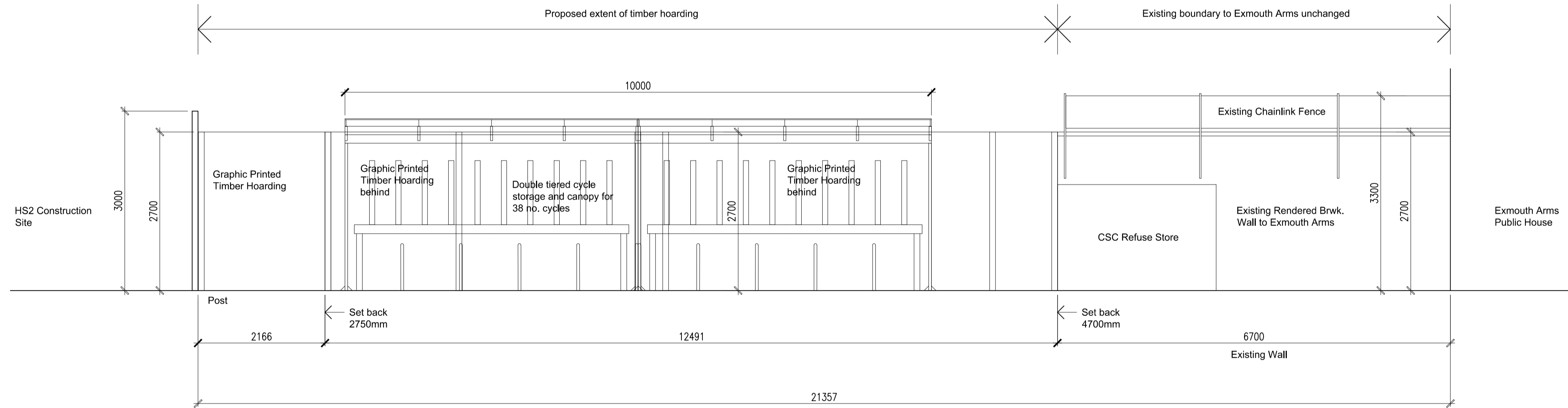


01 Key Plan

1:200



02 Proposed Elevation

1:50

P1	Initial Issue	GR	JSN	APB		
Rev	Description	Drawn	Checked	Approved	Con App	Scale with caution as distortion can occur.

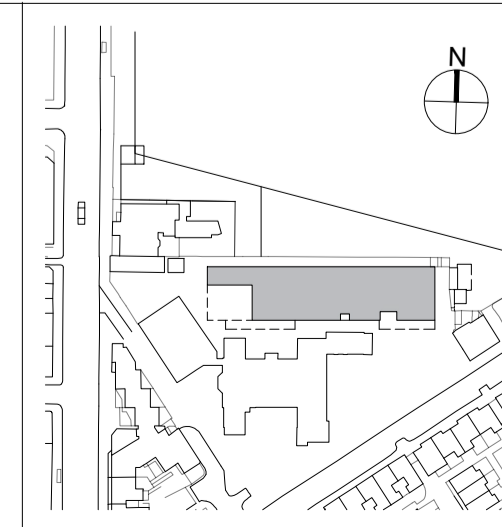
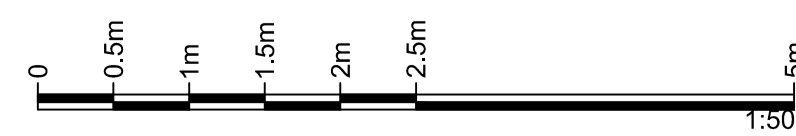
HS2 accepts no responsibility for any circumstances which arise from the reproduction of this document after alteration, amendment or abbreviation or if it is issued in part or issued incompletely in any way.

© Crown Copyright and database right 2020. All rights reserved. Ordnance Survey Licence number 100049150

© Crown Copyright material is reproduced with the permission of Land Registry under delegated authority from the Controller of HMSO.

This material was last updated on 2020 and may not be copied, distributed, sold or published without the formal permission of Land Registry. Only an official copy of a title plan or register obtained from the Land Registry may be used for legal or other official purposes.

Legends/Notes:
— Application Boundary



HS2

OFFICIAL

Registered in England
 Registration No. 06791686
 Registered office:
 2 Snow Hill, Queensway,
 Birmingham, B4 6GA

Project/Contract Proposed Maria Fidelis CSC & Site Accommodation, London. NW1 2HR 1CP01		Creator/Originator MDS		Sub-Originator FBM	
Zone SS08	Work Package Description SL23		Discipline/Function AR		System Description DDE
Drawing Title CSC Cycle Parking Proposed Elevation		Drawn by GR	Checked by JSN	Approved by APB	Date 06/01/2023
Scale 1:50	Size A1	Stage 3	Suitability C		
Drawing No. 1CP01-MDS_FBM-AR-DEL-SS08_SL23-000009					Rev. C01