

65 Clerkenwell Road - London EC1

Existing Window Key + Photos

Issued: 11.01.23
Rev: /

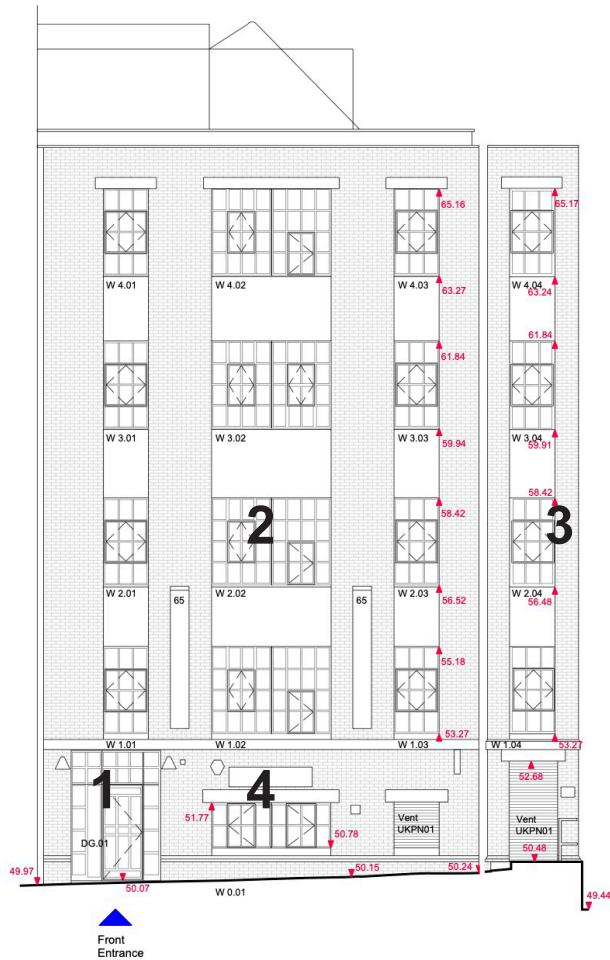


Caitríona Casey architect

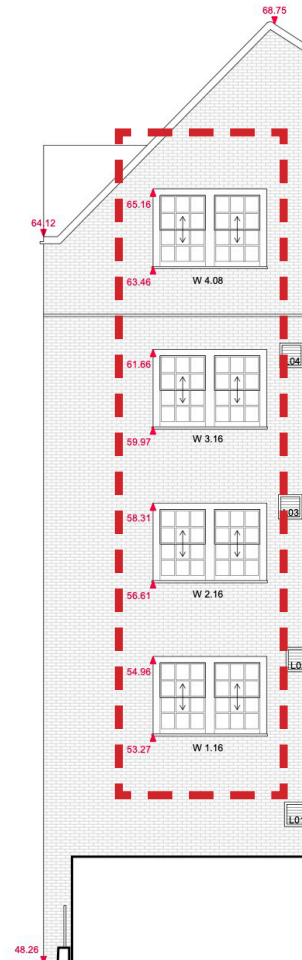


Elevation - KEY

Front + Rear



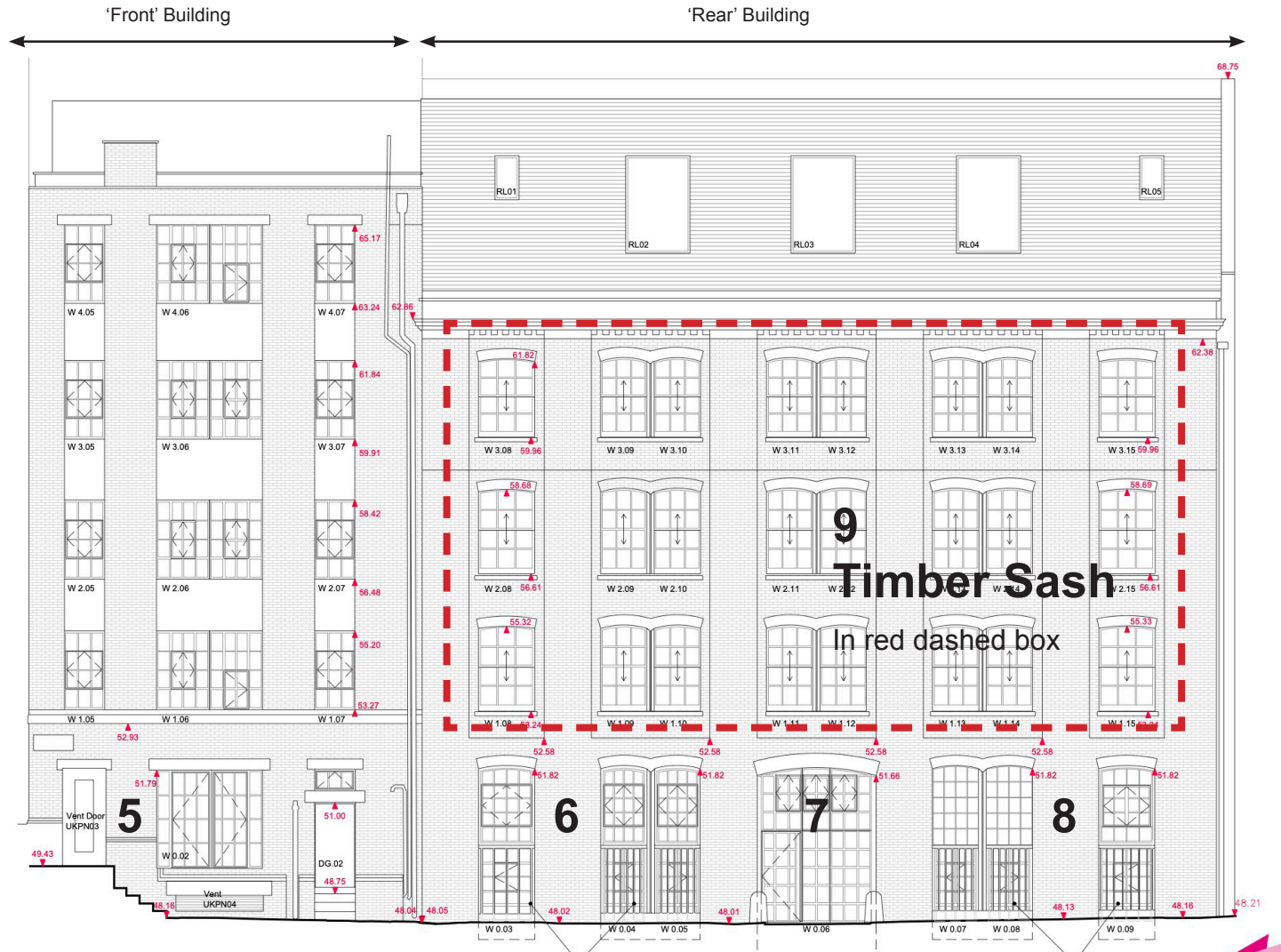
Front Elevation - all metal windows (steel)



Rear Elevation - all timber windows

10
Timber Sash
 In red dashed box

Elevation - KEY Side



Side Elevation - mix of metal + timber windows

Existing Front Elevation

2

Typical Steel windows - in
'front' building, in the yellow
brick.
Mix of fixed, pivot + casement



1

Entrance Door



3

Typical Steel windows - in
'front' building, in the yellow
brick.
Mix of fixed, pivot + casement

4

Typical Steel windows -
ground floor

Existing Side Elevation

- 5 First Floor upwards - typical as photo 2+3
- Ground Floor - large casement



- 6 'Rear' building - white glazed brick up to 3rd floor.
- Ground Floor - older steel windows stacked vertically as singles or doubles around a steel column. Curved heads.



- 7 Ground Floor - newer steel windows infilled as door and mix of fixed and pivot. Curved head.



Existing Side + Rear Elevation

8

Ground Floor - older decorative steel windows stacked vertically as doubles around a steel column. Curved head.



9

'Rear' building - upper floors - all TIMBER Sash. Singles or doubles around a steel column.



10

Rear Elevation - double sashes in singles opening - boxed out in timber

