

Photo 03
Existing Mechanical Plant retained.
For use by Gym, Shop & Pub.



Photo 02
Existing Mechanical Plant retained.
For use by Gym, Shop & Pub.



Photo 01
Existing Mechanical Plant retained.
Assumed for use by gym.

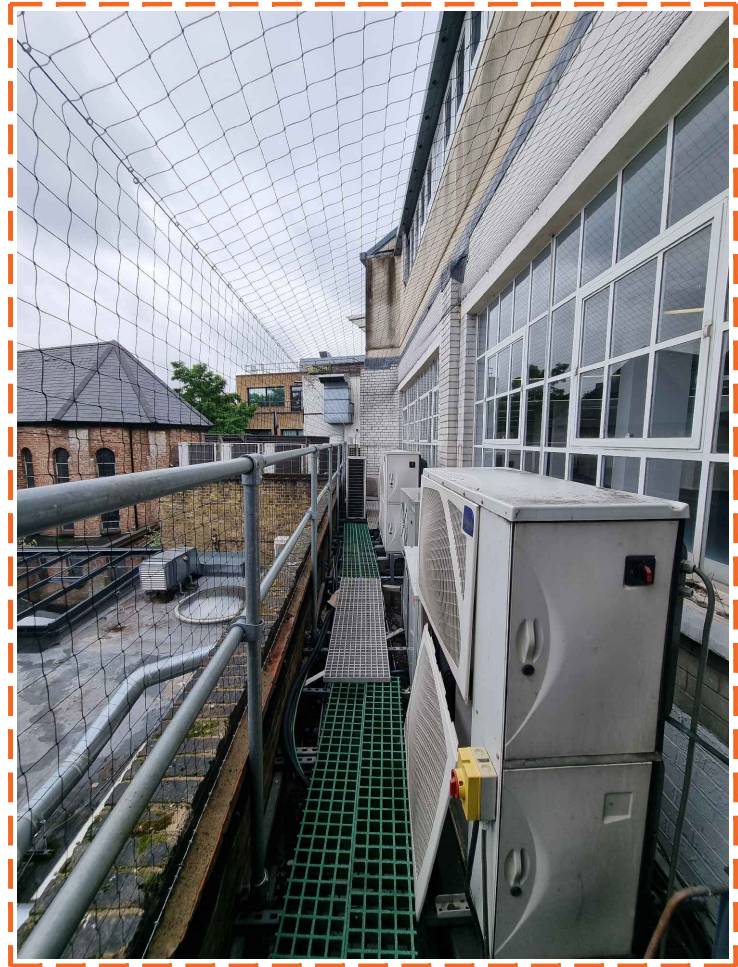


Photo 04
Existing Mechanical Plant retained.
For use by Gym, Shop & Pub.



Photo 05
Existing Mechanical Plant retained.
For use by Gym, Shop & Pub.

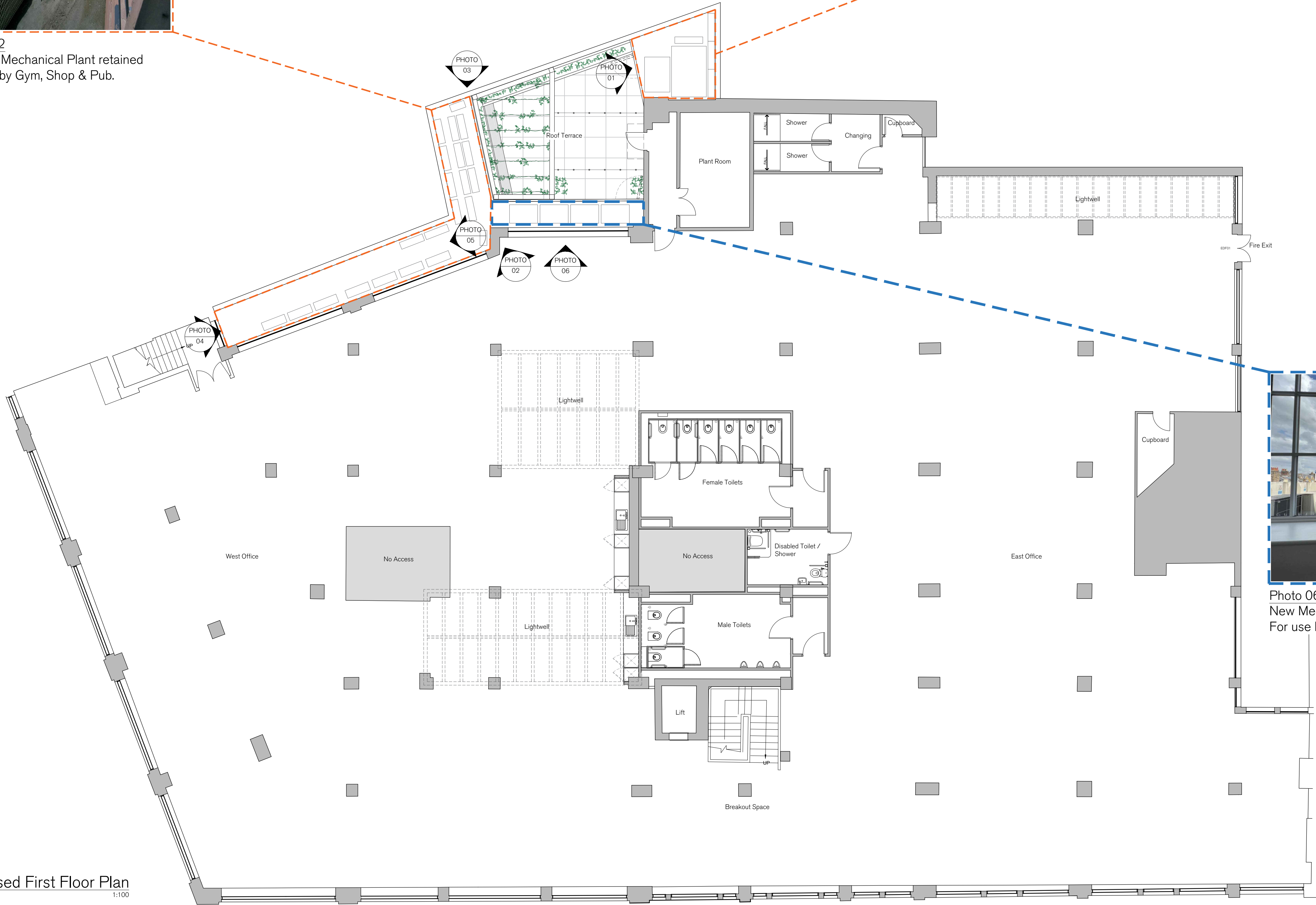
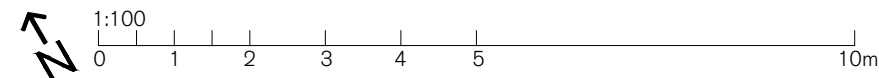


Photo 06
New Mechanical Plant.
For use by office.



SPRATLEY & PARTNERS
7 CENTURY BUSINESS PARK, STATION ROAD, HENLEY-ON-THAMES, OXFORDSHIRE RG9 1DS, 01491 411277
ISSUED ONLY FOR THE PURPOSE INDICATED. THIS DRAWING TO BE READ IN CONJUNCTION WITH ALL CONSULTANTS
INFORMATION. ALL DIMENSIONS TO BE CHECKED ON SITE. DO NOT SCALE. THIS DRAWING IS COPYRIGHT.

REV.	ISSUED	DESCRIPTION	DRAWN	CHECKED
-	-	-	-	-
-	-	-	-	-
-	-	-	-	-

PROJECT	128 Albert Street Camden NW1 7NE
CLIENT	Threadneedle Pensions Ltd.

DESCRIPTION	Proposed First Floor Plan
DATE	NOV 2022
STATUS	PLANNING
DRAWN	TR
CHECKED	RK
REV	-

SCALE AT A1	1:100
JOB NO	21.897
DRAWING NO	PL.114

S
& P