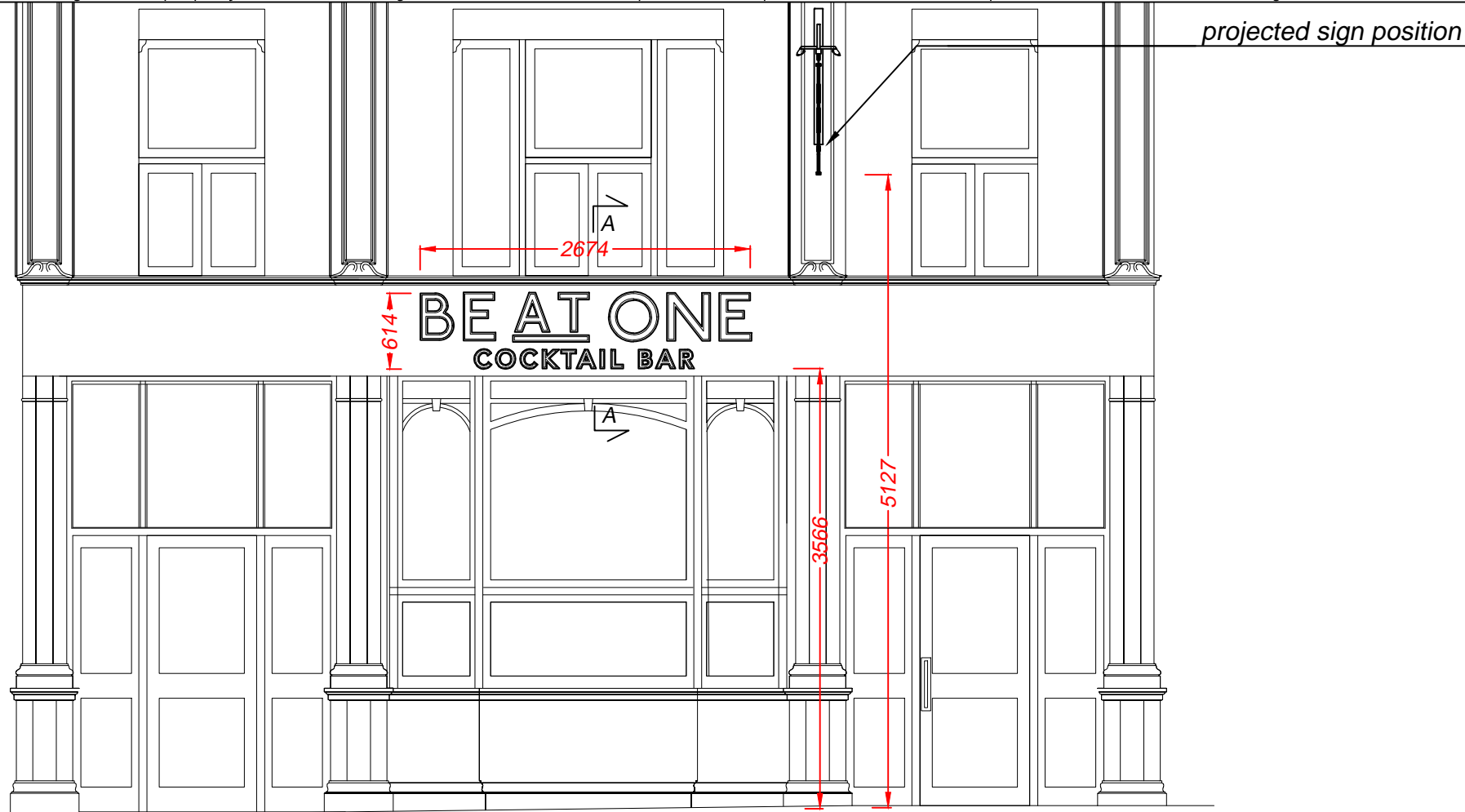
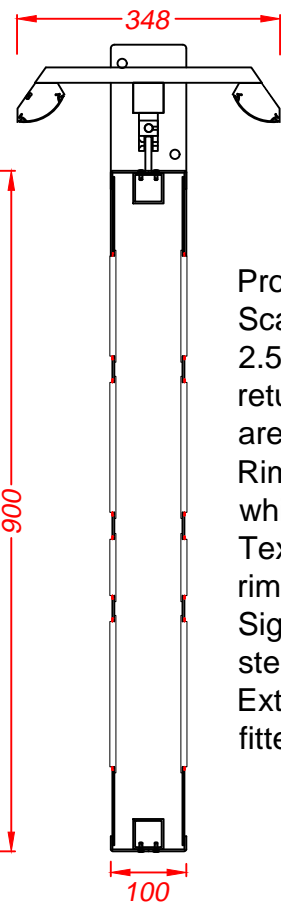
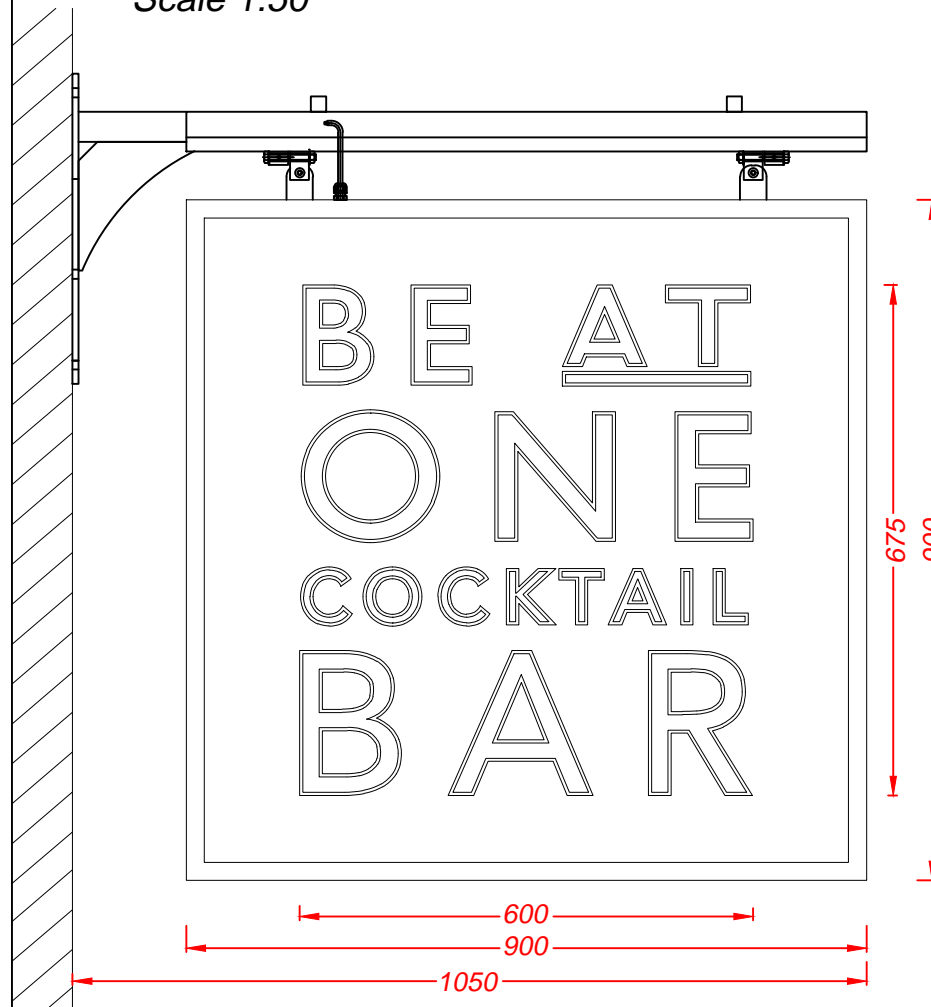


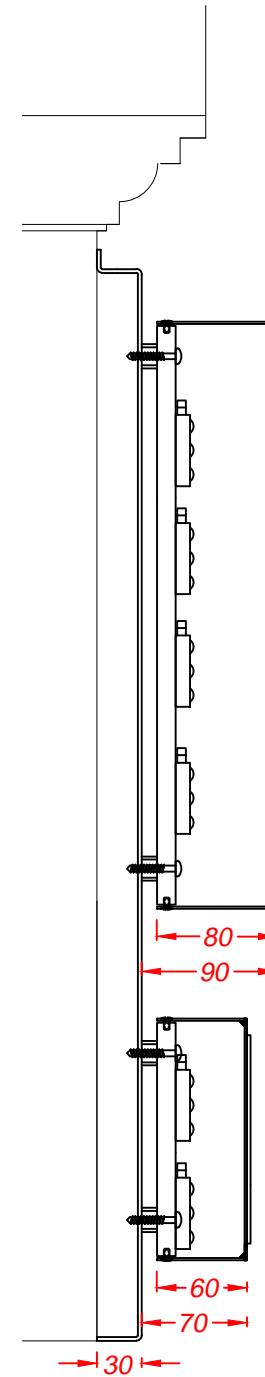
Proposed



Front Elevation
Scale 1:50



Projected sign - 1 off
Scale 1:10
2.5mm aluminium panels with front rims and returns are fixed over a steel inner frame and are finished gold RAL 1036. Rims hold flat 2.5mm aluminium face panels which are finished *Little Greene* Basalt 221. Text is 5mm white acrylic with gold vinyl letter rims applied to the panel faces. Sign hangs from swing blocks welded to a black steel projecting arm. External illumination from black steel troughs fitted with low energy cool. white LEDs



Section A-A through the text
Scale 1:5
Folded and welded 2.5mm aluminium fascia panels are finished *Little Greene* Basalt 221.

Built-up letters have 1.2mm descaled stainless steel faces with soldered returns which are finished gold RAL1036. Flat cut 2mm aluminium faces finished white are bonded to the front. The backs are 10mm opal acrylic which are screw fixed on spacers to the fascia. Fitted with low energy white LEDs for halo illumination.



	Technical Signs Floor 1 - Unit 3 Hille Business Centre 132 St Albans Road Watford, Herts, WD24 4AE Tel: 01923 811999 Fax: 01923 811998 E-mail: info@technicalsigns.co.uk		Client Be at One Address/Job details 55 Camden High St Camden NW1 7JH	
	Proposed Signs		Job No	
	Drawn by DN	Date 08/01/23	Scale As specified (A3)	
	Drawing No 596683-2	Rev	As specified (A3)	