

**Specification**

**GrufeKit Green Roof System**

**Manufacturer / Supplier:**  
 ANS Global  
 Aldingbourne Nurseries  
 Church Road  
 Aldingbourne  
 Chichester  
 PO20 3TU  
 Tel: +44 (0)1243 545818  
 Web: www.grufekit.co.uk

**Product Reference:** ANS GrufeKit Green Roof System

**ANS GrufeKit Module**  
 Polypropylene (PP) 100% recyclable material;  
 540mm x 540mm x 90mm  
 12 month guarantee

**Planting Media**  
 Special substrate prepared specifically for the system. Particular mixes can also be prepared depending on the planting and project requirements.

**Vegetation**  
 Sedum GrufeKit:  
 Pre-grown with 8-12 varieties of sedum (evergreen).  
 Sedum & Wildflower GrufeKit:  
 Pre-grown with 8-12 varieties of sedum and 20-30 wildflower and meadow grass varieties.

**Brown Wildflower GrufeKit:**  
 Intensive substrate seeded with wildflowers and meadow grasses.  
 Height of 30-40mm (no wildflowers).

**Saturated weights**  
 Sedum: 20kg/tile  
 Sedum & Wildflower: 22kg/tile  
 Brown Wildflower: 22kg/tile  
 Compressive strength of 588kg/tile  
 Water holding capacity of 5.8litres/tile  
 UV resistant  
 Temperature range -50C - 80C  
 Drainage surface 93.5cm<sup>2</sup>/tile  
 Outflow volume 11.7litres/tile

**Installation**  
 Installation by chosen contractor. We are able to install but the nature of the system does not make this necessary.  
 Double-action coupling system: the tabs on the side of each part engage the edge in the gaps between tabs of the facing part.

**ANS GrufeKit Stone**  
 Scottish white pebbles  
 Size range 20-40mm  
 20kg bag  
 3 bags per linear metre for a 150mm border  
 Local authorities may require as standard installation.

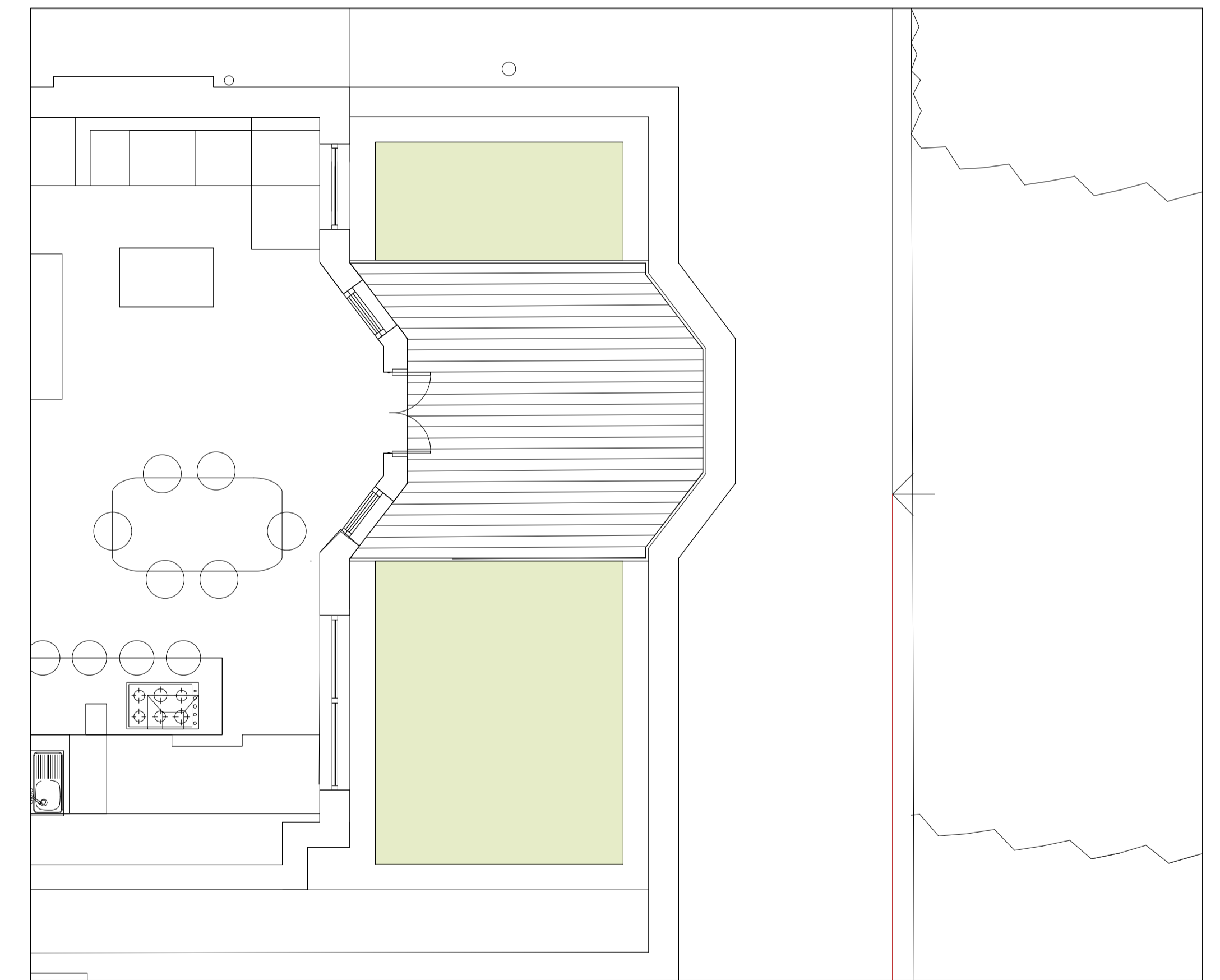
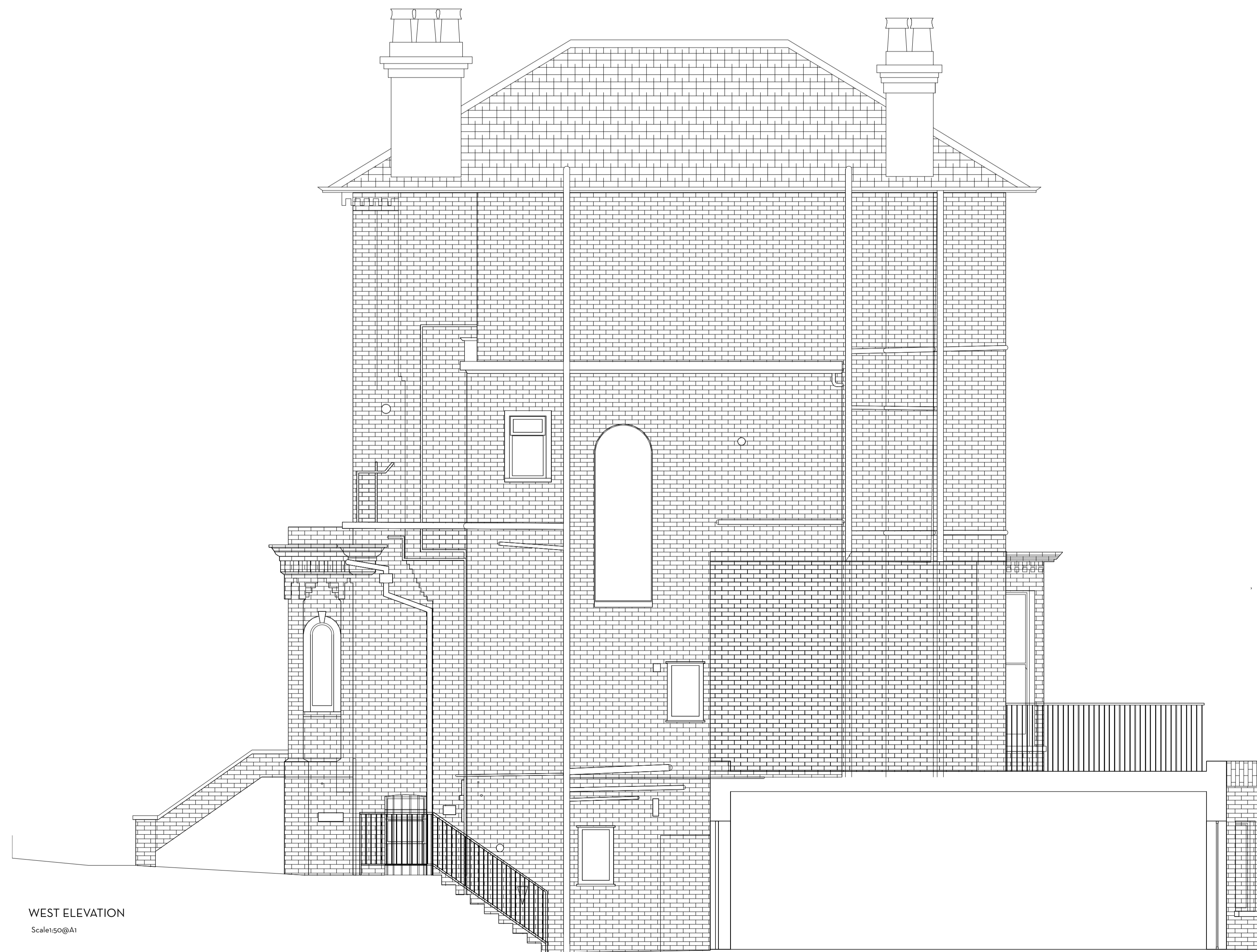
**ANS GrufeKit GrufeGuard (Edgeguard)**  
 Aluminium  
 1m lengths  
 100mm high as standard  
 Angled (90 degrees) or straight connectors  
 Can be cut with hacksaw or angle grinder  
 If there is no upstand or parapet then an edgeguard is recommend.  
 No fixings required. Laid on top of the protection fleece (supplied) and held by the weight of the modules.



+44 (0)1243 545818

sales@grufe.co.uk

www.grufekit.co.uk



**PLANNING**

Do not scale. Use figured dimensions only.  
 All dimensions to be checked on site.  
 All drawings to be read in conjunction with the Structural Engineer's drawings.

Scale: 1:10 @ A1  
 0 0.1m 0.2m

Scale: 1:50 @ A1  
 0 1m 2m 5m 10m

**KING HENRY'S ROAD**

**GREEN ROOF DETAIL**

PROJECT	King Henry's Road
ADDRESS	Flat 1-2, 131 King Henry's Road, London NW3 3RB
CLIENT	Bridge Approach Investments LTD
AUTLOR	JW
DATE	05.01.23
DRAWING	255-27-800-PL
SCALE	Varies @ A1

**ARCHITECTURE DESIGN MUTINY**

(T.F) 07951 248 528  
 muntiny-architecture.com

DESCRIPTION	BY	DATE	REV

This drawing is the copyright of Muntiny Architecture Ltd. Not to be reproduced, retained or disclosed to any unauthorised person either wholly or in part without written permission.