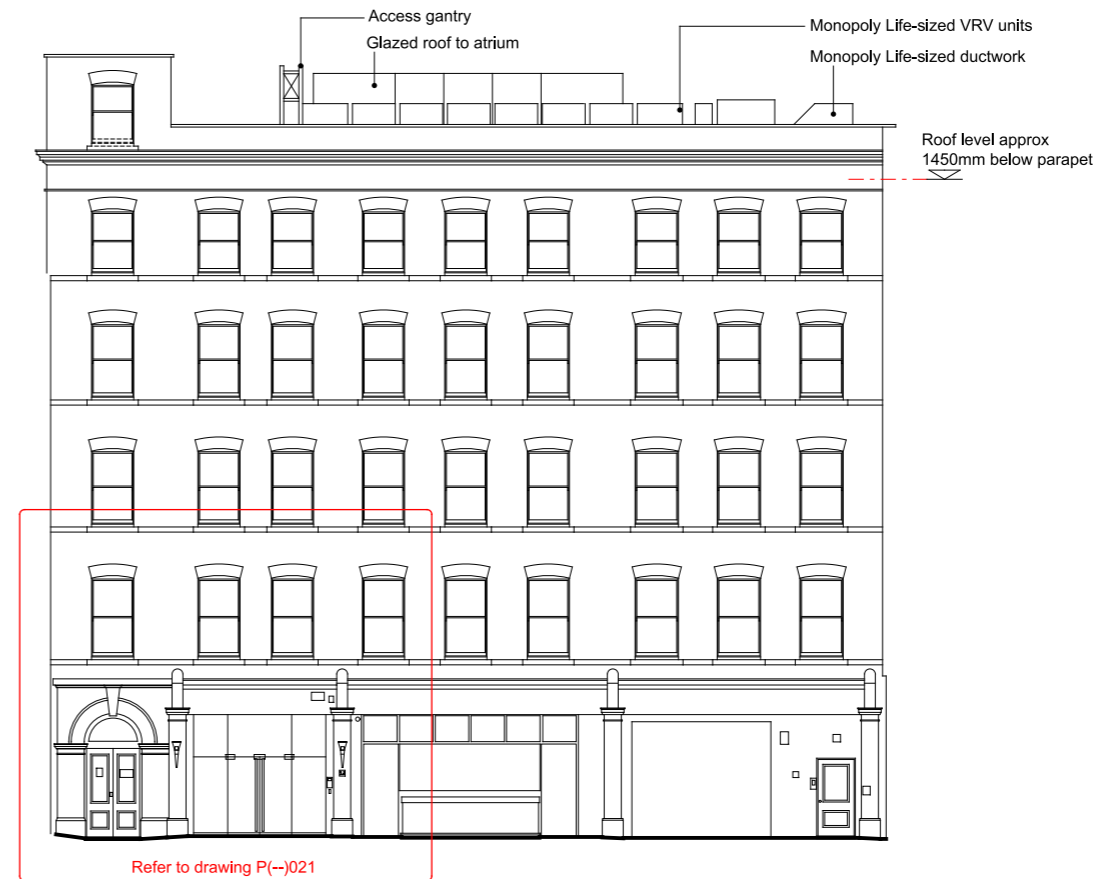




Existing Tottenham Court Road Elevation



Existing Alfred Place Elevation



0 2 5 10m

PLANNING ISSUE



Project 12 Alfred Place London & 213-215 Tottenham Court Road WC1E 7EB		Scale 1:200 @ A3, 1:100 @ A1	Date 16/12/2022
Drawn by SRH	Checked by Proj. Arch.	Checked By Manager	
Drawing No. 22036/P(--)-020	Revision P1		
The Colman Partnership Limited 27 Harcourt Street London W1H 4HP		Telephone : 020 7535 2040 Facsimile : 020 7535 2041 email: projects@colmanarchitects.co.uk	
www.colmanarchitects.co.uk		CAD Filename: SRHES_SUVIES	

Dimensions are not to be scaled from this drawing.
This drawing is based on current available information and should not be relied on as accurate measurements of usable spaces.
This drawing is the property of the Colman Partnership Ltd, and Copyright is reserved by them. The drawing is issued on condition that it is not copied or disclosed by or to any unauthorised persons without the prior consent in writing of the Colman Partnership Ltd.

Rev	Notes	By	Date
P1	Planning Issue	SRH	04/01/23