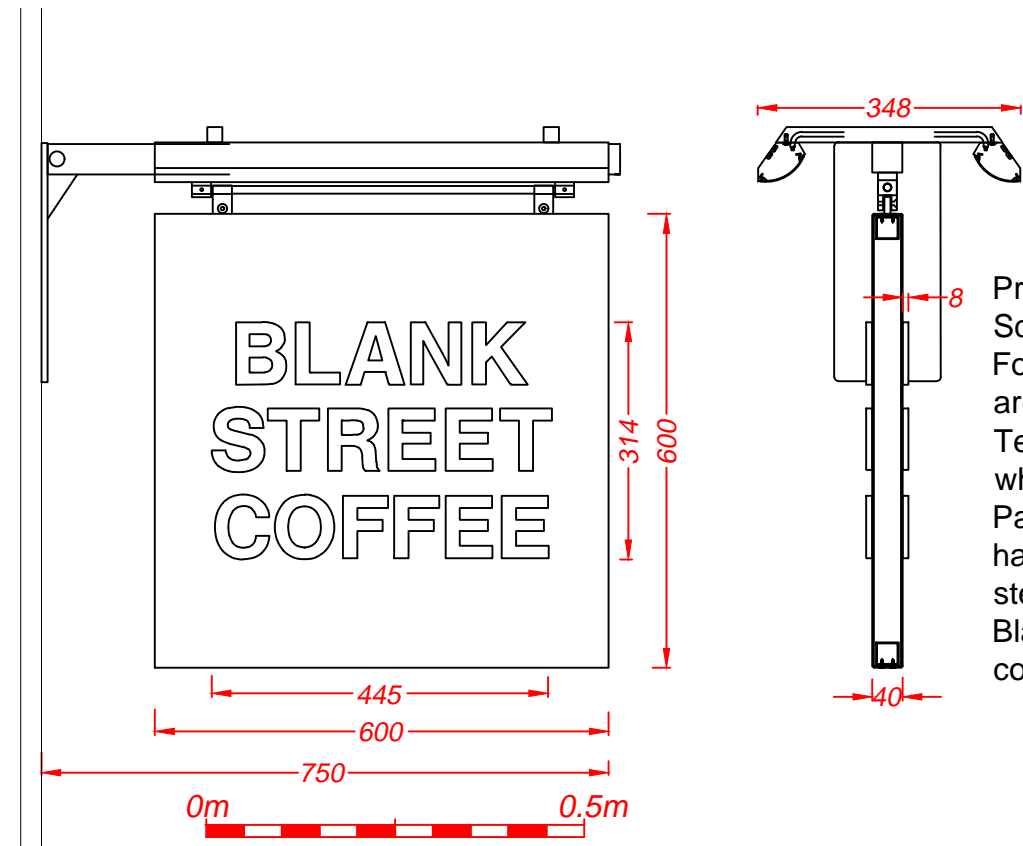
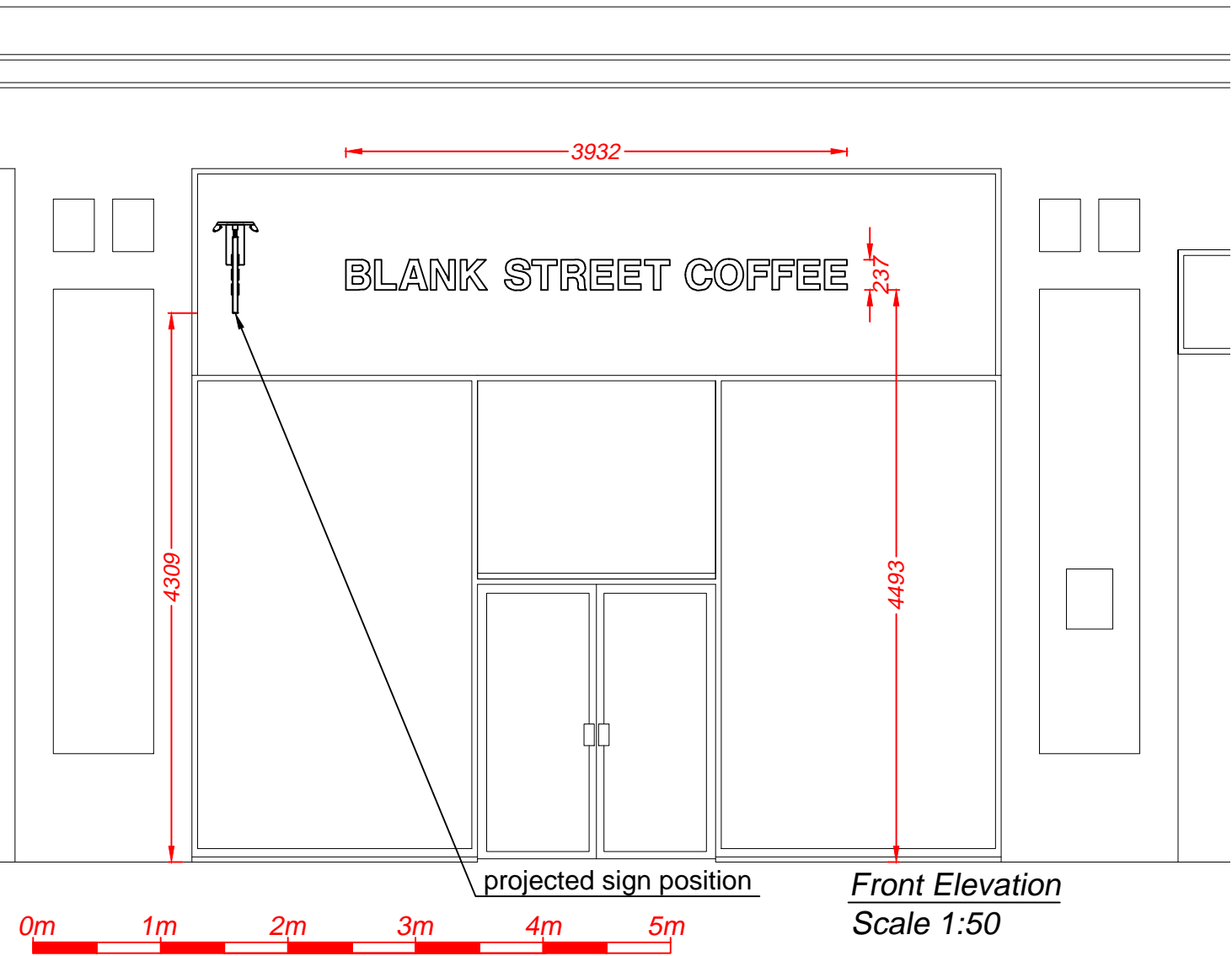
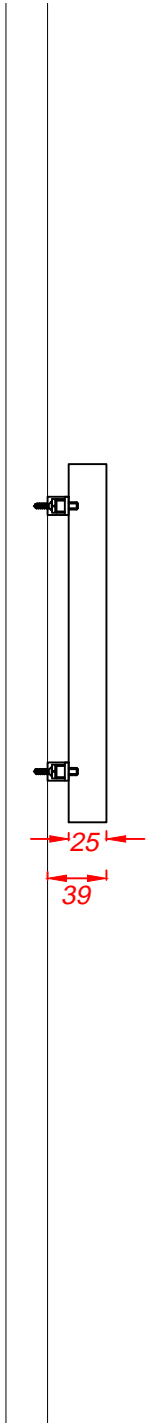


Proposed



Projecting sign - 1 off
Scale 1:10
Folded and welded 2.5mm aluminium panels are finished black.
Text is flat cut 8mm aluminium letters finished white and stud fixed to the panel faces.
Panels fixed around a steel inner frame which hangs from swing blocks welded to a black steel projecting arm.
Black steel troughs are fitted with low energy cool white LEDs for external illumination.



Section A-A through the text
Scale 1:5
Existing fascia is made good if necessary and is kept as the same brown colour.

Text reading 'BLANK STREET COFFEE' are flat cut 25mm Trovidur finished white and fixed to the fascia on locators.
No illumination.



B	Trough lit projecting sign	21/12/22
A	Projecting sign moved	14/12/22

		Client Blank Street Coffee		
		Address/Job details 110 New Oxford St Bloomsbury WC1A 1HB		
		Proposed Signs		
		Job No		
		Drawn by DN	Date 16/10/22	
		Scale As specified (A3)	Drawing No 596649-2	Rev B