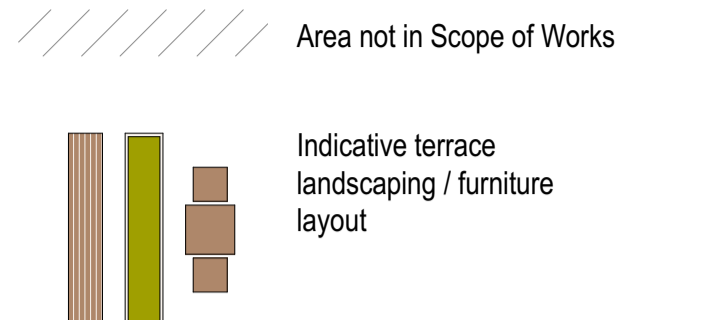
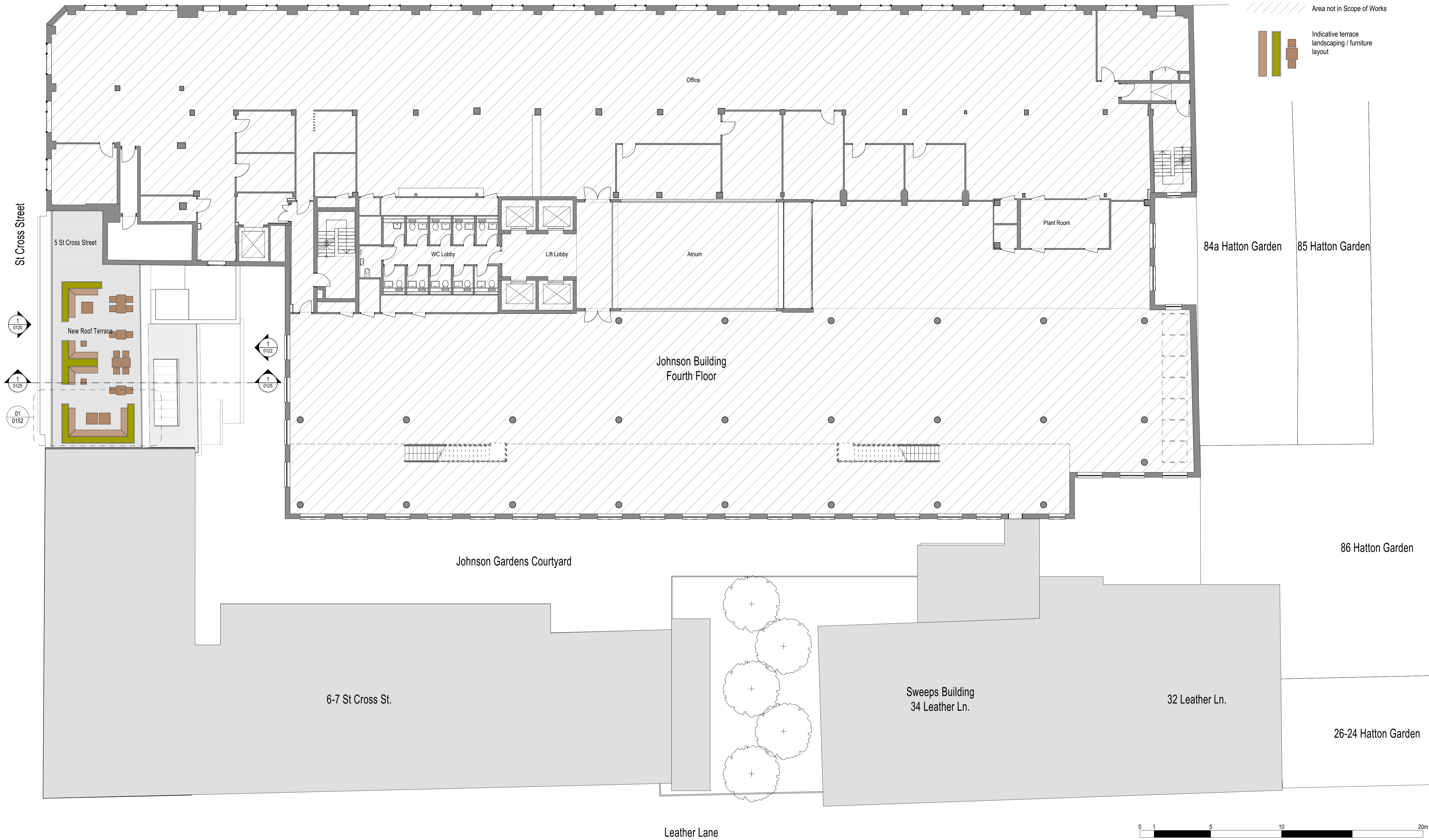
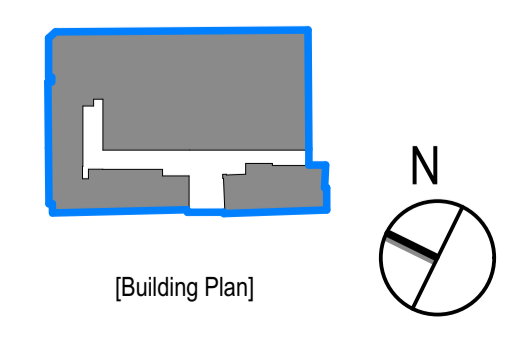


Hatton Garden

Key Plan



KEY PLAN / NORTH SYMBOL



JRA
 John Robertson Architects
 111 Southwark Street,
 London, SE1 0JF
 02076335100
 www.jra.co.uk
 enquiries@jra.co.uk

Project
Johnson Gardens
 London
 Client
Johnson Hatton Office Unit Trust
 11-15 Seaton Place St Heller
 Jersey JE4 0QH UK

Drawing Title
Johnson Building & 5 St Cross Street - Proposed Fourth Floor Plan
 Scale 1:125 @ A1 / 1:250 @ A3 Internal Project No. 1985
 Dwg No. **1985-JRA-00-04-DR-A-0114**
 Suitability FOR INFORMATION S2
 Revision PRELIMINARY **P04**

Rev	Date	Dwn	Chk	Description
P01	20/08/2021	AM	LM	Issue for Information
P02	27/08/2021	AM	LM	Issue for Planning
P03	03/12/2021	AM	LM	Issued for Planning
P04	04/02/2022	AM	LM	Issued for Planning

Rev	Date	Dwn	Chk	Description

Rev	Date	Dwn	Chk	Description

This document and its design content is © John Robertson Architects Ltd. It shall be read in conjunction with all other associated project information including models, specifications, schedules and related consultants documents. Do not scale from documents. All dimensions to be checked on site. Immediately report any discrepancies, errors or omissions on this document to the Originator. If in doubt ASK.

Source File: BIMcloud: STSBIM23 - BIMcloud Basic for ARCHICAD 23/1985 - The Estate/1985-JRA-00-ZZ-M3-A-0002_The Estate