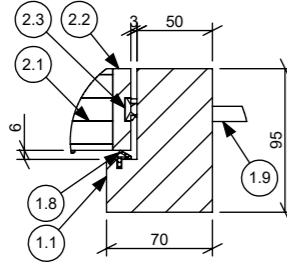
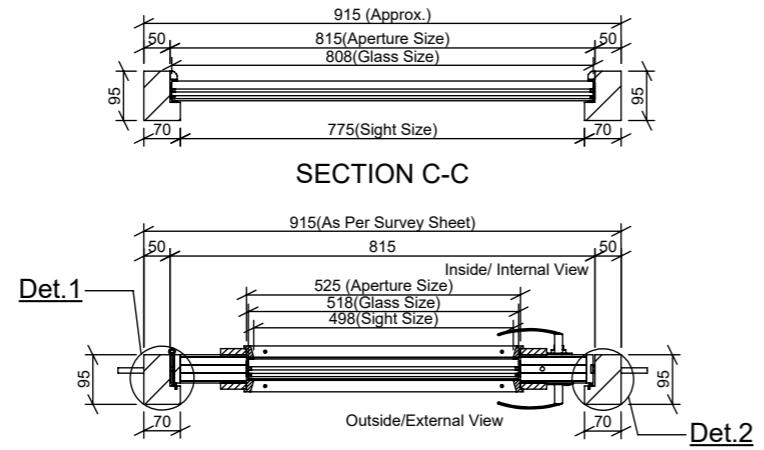


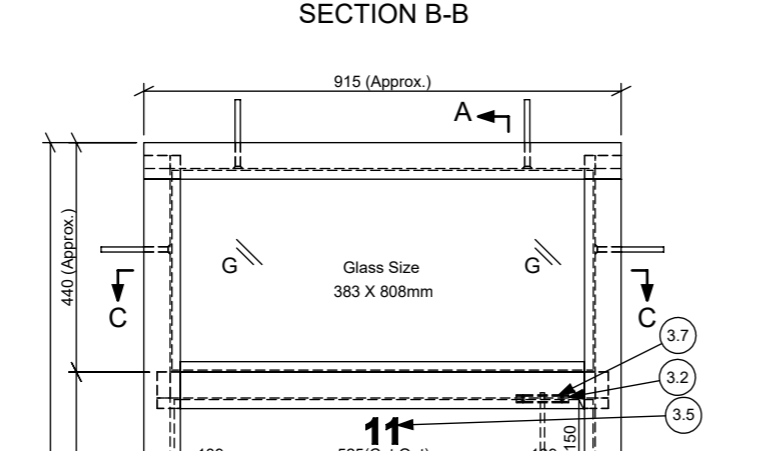
Det.1



Det.2

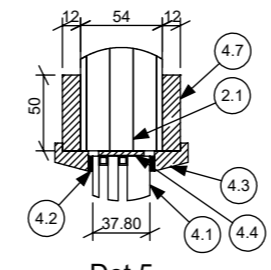


SECTION C-C



SECTION B-B

PILOT DOOR



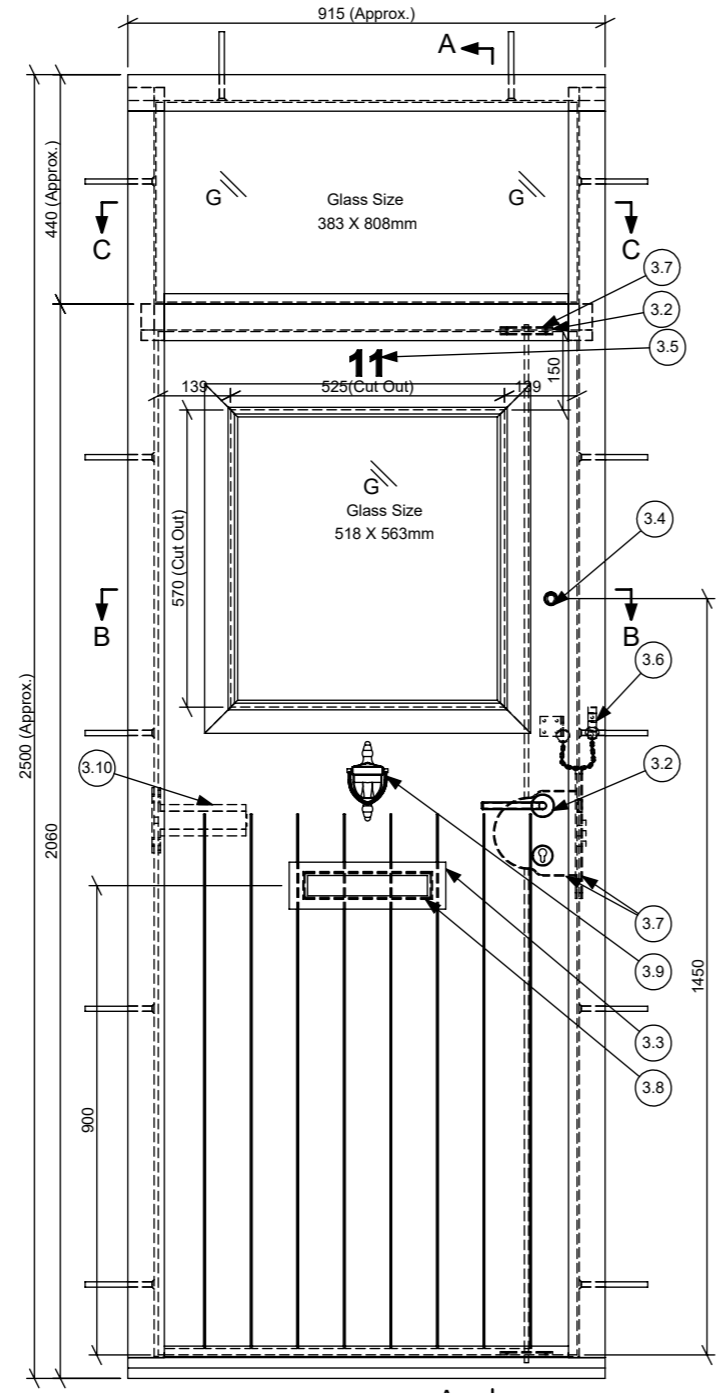
Det.5

All / Any electrical equipment to be disconnected and connected by others

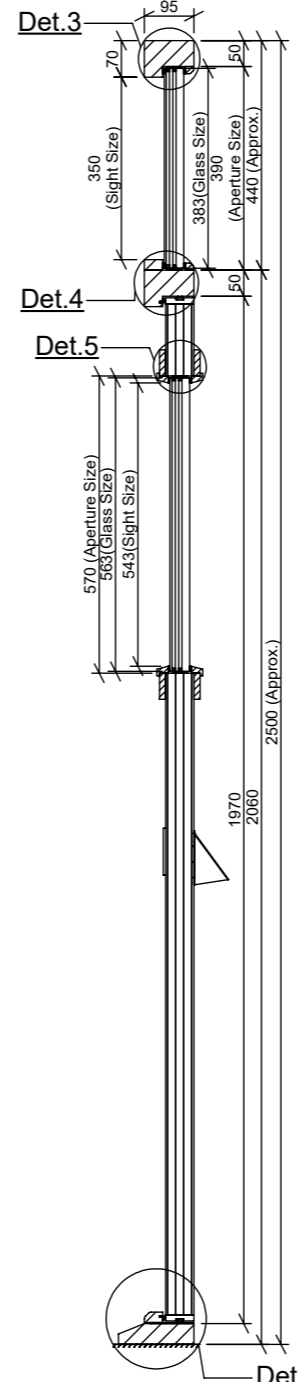
**BOURNE ESTATE
FLAT ENTRANCE DOOR
TOTAL QTY. 1 DOOR**

1. FD30S Doorset.
2. Door clear opening 733mm when 90° open.
3. Please refer site dims for more details.

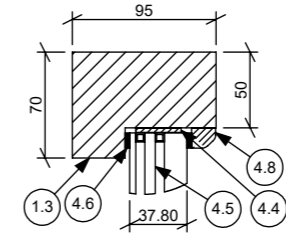
REPORTS	
ITEM 1 Test Report Number : WYC412017 / 03 Testing Standard BS EN 1634-3:2004	
Positive 25Pa - 0.429 m ³ /hr/m (86% under allowable capacity)	
Negative 25Pa - 0.405 m ³ /hr/m (87% under allowable capacity)	
Percentage of seal for Intumescent Fire Seal	61% (interruption at shoot bolts and Lock positions)
Percentage of seal for Draft Seal	100% (no interruption)
ITEM 2 Primary Burn Test Report No.	WF 420594 Chil/RF13251
ITEM 3 Field Application Report No.	Chil/A12038 RevD / WF 407952
ITEM 4 Enhanced Security Doorset to PAS24 Report No.	P11034
ITEM 5 Q-Mark Fire Door Manufacturing 006 Scheme Certificate No.	1244
ITEM 6 FSC Certificate No.	TT-COC-002470
ITEM 7 Q-Mark Enhanced Security Door Scheme to PAS 24:2016 and BS644:2012	269
ITEM 8 SBD License Valid Date	16th October, 2022
ITEM 9 Thermal Report No.	WL428978
ITEM 10 Acoustic Report No.	WYC429011/P005



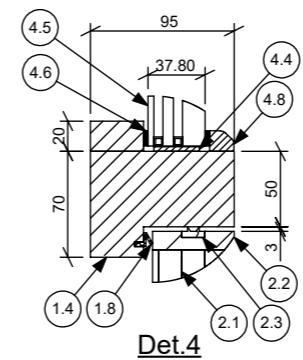
From External View
Hang Left Open In
ELEVATION



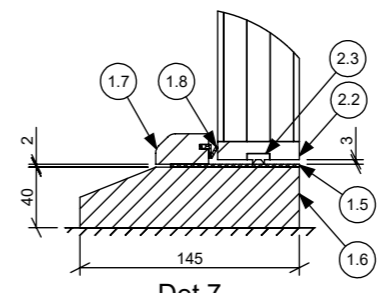
SECTION A-A



Det.3



Det.4



Det.7

Q-MARK PAS 24 PD NO. 0000 APPROVED			
ITEM NO.	DESCRIPTION	MATERIAL / PROFILE	QTY.
1 FRAME ASSEMBLY			
1.1	Jamb	Sapele Rebated Hardwood	1
1.2	Jamb	Sapele Rebated Hardwood	1
1.3	Header	Sapele Rebated Hardwood	1
1.4	Transom	Sapele Rebated Hardwood	1
1.5	Sill	Stainless Steel	1
1.6	Threshold	Hardwood	1
1.7	Door Stop	Meranti Rebated Hardwood	1
1.8	Draught Excluder	Aquamac - 21	1
1.9	S/Sleeve Anchor Fixing	-	12
2 Door Assembly			
2.1	Door Leaf (W/O Lipping)	Flamebreak - Solid Core	1
2.2	Door Lipping	Meranti	1
2.3	Intumescent Strip - Around Door	LP1504TS	1
3 IRONMONGERY			
3.1	Hinge	8mm Continuous Mild Steel	1
3.2	Door Lock	MPL Lock (Cylinder With Thumbturn, Lever Handle & Lock Keeps)(Rose Ironmongery)	1
3.3	Letter Plate	Multi-Secure TS008 Letter Plate With Internal Security Cowl	1
3.4	Door Viewer	AA76	1
3.5	Door Number	As Required	1
3.6	Door Security Chain	As Required	1
3.7	Intumescent Protection at Lock & Lock Keeps	Firefly 104E	1
3.8	Intumescent Protection at Letterplate	Firefly 104E	1
3.9	Door Knocker	As Required	1
3.10	Door Closer	Astra Concealed Door Closer	1
4 GLASS			
4.1	Door Glazing	Artic Glass With Seal Unit	1
4.2	Glazing Tape	Firestrip30	2
4.3	Glazing Bead	Sapele Timber	2
4.4	Setting Block	Sapele Timber	-
4.5	Fanlight Glazing	Artic Glass With Seal Unit	1
4.6	Fanlight Glazing Tape	Firestrip30	2
4.7	Wood Strip	Sapele Timber	2
4.8	Fanlight Glazing Bead	Sapele Timber	1

COLOUR	
Door	RAL 6009 (Green)
Frame	White

FIXING DETAIL		THIS DRAWING IS THE PROPERTY OF MULTIINSTALLATIONS LIMITED AND MUST NOT BE COPIED OR DISCLOSED TO A THIRD PARTY WITHOUT THE WRITTEN PERMISSION OF MULTI-INSTALLATIONS LIMITED.
	= Fixing Positions	
	= 10 X 132 S/Sleeve Anchor Fixing On Masonry	
	= M 10 Machine Screw (for Steel)	
	= M 10 Machine Screw (for Wood)	

REV	DETAIL	DATE
C	Reissued For Review	16/08/2022
B	Glazing Bar Removed	22/07/2022
A	Issued For Review	22/06/2022

PROJECT : Bourne Estate	
Flat Entrance Door	
DRAWN BY: Vismay	DATE: 16/08/2022
CHECKED BY: Ril	SCALE: NTS

