

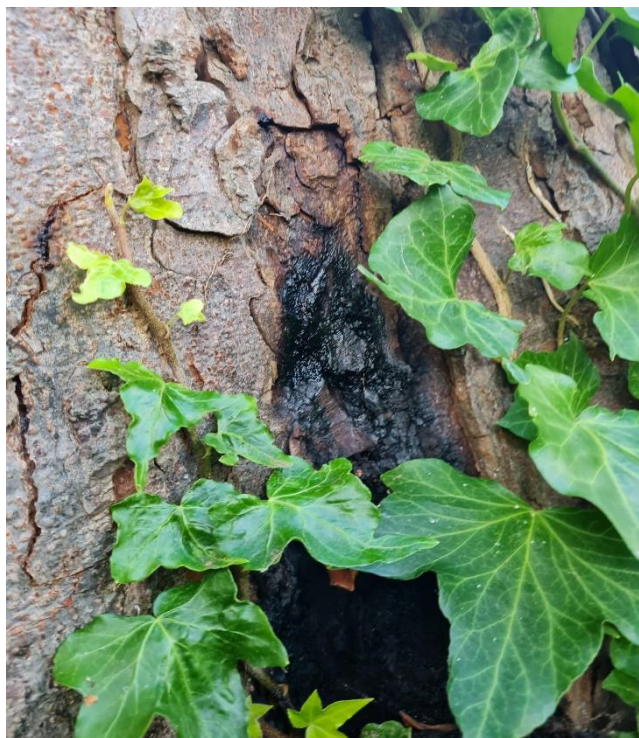
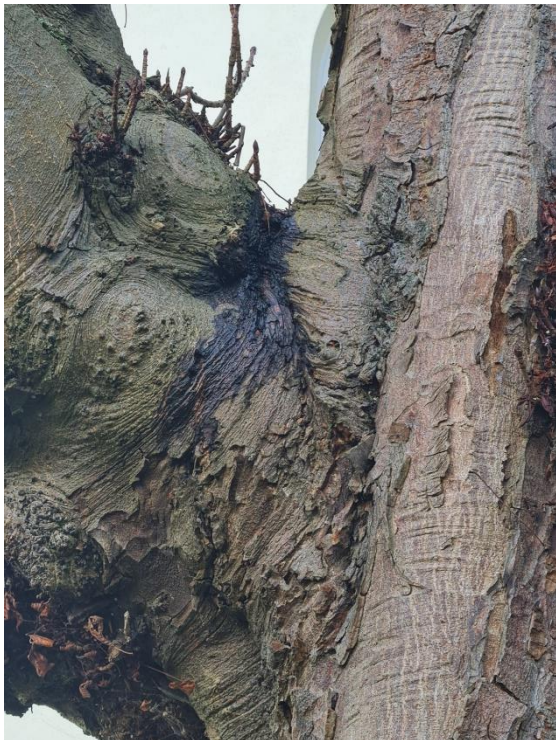


Tree observation notes

T1 Chestnut has a very large cavity at the base of the trunk, it has been probed to a depth of approx. 70cm / 75% of the trunk on the eastern side:



There is also evidence of *Pseudomonas syringae* pv. *Aesculin*. I have shown the bleeding canker below:



Bracket fungus can be seen below at the base of the tree (western side):



A low pollard was initially considered as an alternative to removal, but we feel it will spoil the morphology of the tree to an extent it would lower the amenity value more so than removal. Further to this, we have deemed this tree unsafe to climb and will be removed by a grapple saw / crane. On going maintenance is neither practical or financially viable as a even a tracked spider MEWP cannot fit into the garden.

Sincerely,

Harley Waite