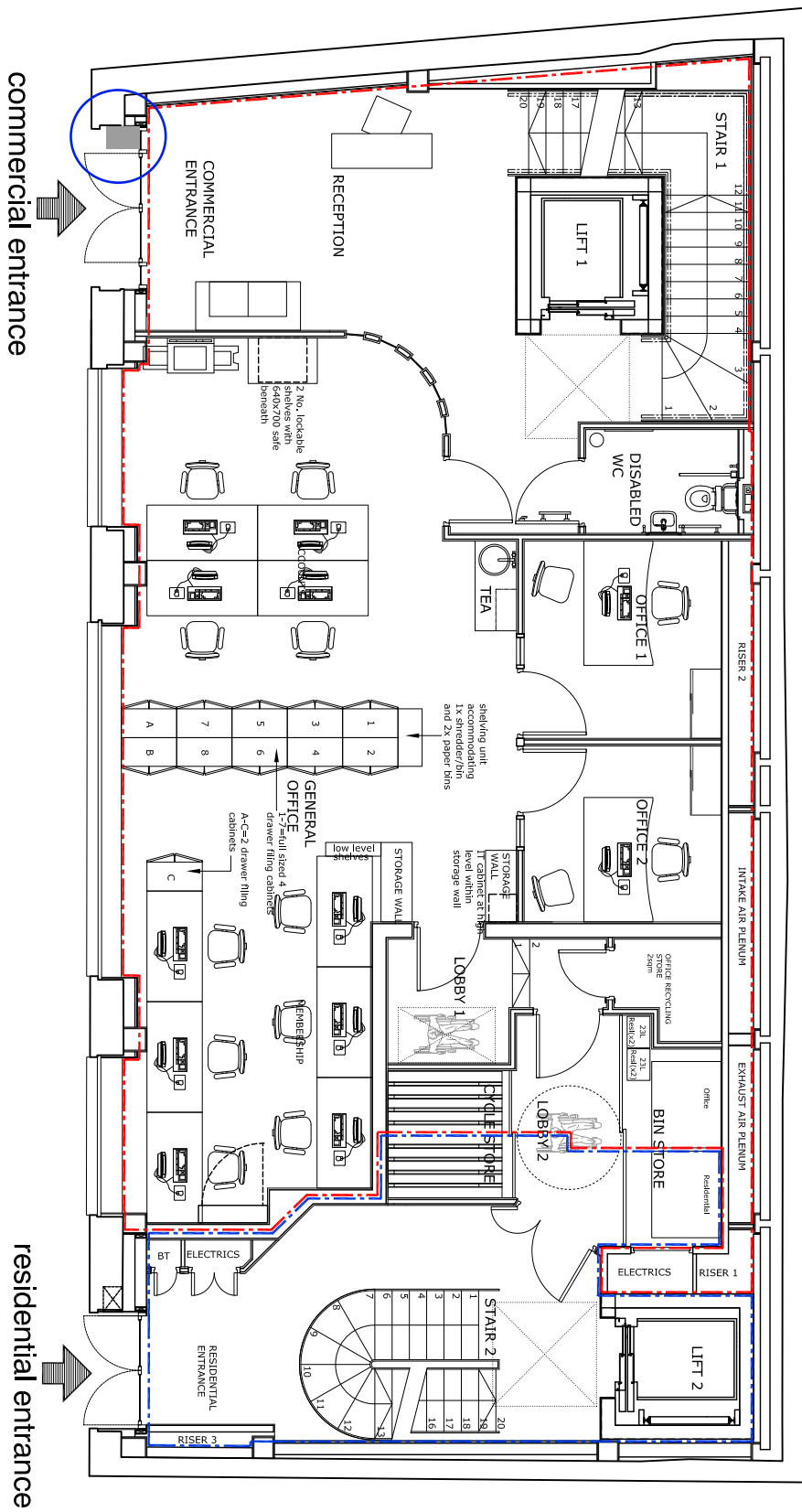


BASEMENT

Gross internal area OFFICE :172.0 m²

Gross internal area RESIDENTIAL :0 m²



GROUND FLOOR

Gross internal area OFFICE :144.1 m²

Gross internal area RESIDENTIAL :32.4 m²

Schedule Of Accommodation				
	OFFICE		RESIDENTIAL	
	GIA / m²	GIA / ft²	GIA / m²	GIA / ft²
FOURTH FLOOR	0m²	0ft²	130.9m²	1409ft²
THIRD FLOOR	0m²	0ft²	167.8m²	1806ft²
SECOND FLOOR	161.7m²	1740ft²	14.2m²	153ft²
FIRST FLOOR	162.3m²	1747ft²	14.4m²	155ft²
GROUND FLOOR	144.1m²	1551ft²	32.4m²	348ft²
BASEMENT FLOOR	172.0m²	1851ft²	0m²	0ft²
TOTAL	640.1m²	6889ft²	359.7m²	3871ft²

RESPONSIBILITY IS NOT ACCEPTED FOR ERRORS MADE BY OTHERS IN  
SCALING CHECK THIS DRAWINGS ON SITE  
CONTRACTORS MUST BE REPORTED IMMEDIATELY TO THE  
ARCHITECT BEFORE PROCEEDING.  
THIS DRAWING IS COPYRIGHT

Rev.	Date	Issued for information	Initials
------	------	------------------------	----------

P1	09.01.13	Issued for information, GIA amended to include total residential and office areas.	AA
P2	24.01.13		AA

CDM Regulations

Drawn AA	Proj Manager RL	Scale 1:100@A3	Date first created 07.01.13
DRAWING No.			REVISION
10100(L)201			P2
PROJECT Saffron Hill			
TITLE Plans Basement and Ground Floors			