

C B91 Plantroom Section C-C

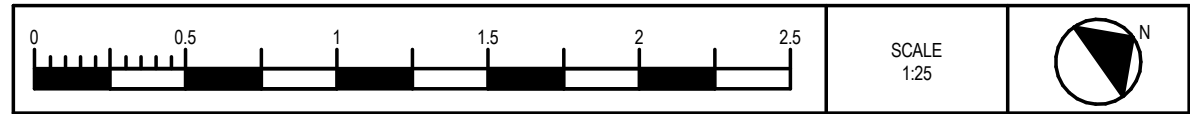
1 B91 Plantroom Layout



Key internal appliances for removal: Boilers, gas pipework, control panel, pipework. Refer to design access statement for full schedule of works.



Key external appliances for removal: Gas pipework, flues. Refer to design access statement for full schedule of works.



© Buro Happold Limited or its group companies. All Rights reserved. Buro Happold and its group companies assert (unless otherwise agreed in writing) their rights under s.77 to 89 of the Copyright, Designs and Patents Act 1988. DO NOT SCALE THIS DRAWING.
SAFETY HEALTH AND ENVIRONMENTAL INFORMATION
IN ADDITION TO THE HAZARDS/RISKS NORMALLY ASSOCIATED WITH THE TYPES OF WORK DETAILED ON THIS DRAWING, NOTE THE FOLLOWING:
CONSTRUCTION
MANTENANCE/CLEANING/OPERATION
DECOMMISSIONING/DEMOLITION

- Notes
- STANDARD NOTES**
- THIS DRAWING IS TO BE READ IN CONJUNCTION WITH ALL OTHER DISCIPLINES, DRAWINGS, SCHEDULES AND SPECIFICATIONS, LEGENDS AND STANDARD DETAILS.
 - THIS DRAWING IS COPYRIGHT AND SHALL NOT BE REPRODUCED WITHOUT PERMISSION.
 - DIMENSIONS GOVERN ON ALL DRAWINGS AND DETAILS. SHOULD ANY DISCREPANCIES BE FOUND WITH THIS DRAWING AND ANY ASSOCIATED DRAWINGS OR SPECIFICATIONS THIS SHOULD BE BROUGHT TO THE ATTENTION OF THE M&E BUILDING SERVICES CONSULTANT IMMEDIATELY.
 - UNLESS OTHERWISE STATED ALL DIMENSIONS ARE IN MILLIMETRES.
 - DO NOT SCALE FROM THIS DRAWING.
 - DIMENSIONS TO BE CHECKED ON SITE BEFORE ANY WORK IS PUT IN HAND OR PREFABRICATED.
 - THIS DRAWING SHOULD ONLY BE USED FOR THE SPECIFIC SERVICES INTENDED.
 - THIS DRAWING SHOWS THE DESIGN INTENT ONLY. THE CONTRACTOR SHALL BE RESPONSIBLE FOR THE FULL CO-ORDINATION OF THE SERVICES INDICATED ON THIS AND ALL EXISTING SERVICES.
 - FINAL ACCESS AND SETTING OUT OF SERVICES SHALL BE AGREED BETWEEN THE CLIENTS REPRESENTATIVE AND THE CONTRACTOR.
 - THE PROJECT NOTES ARE TO BE READ IN CONJUNCTION WITH ALL RELEVANT TECHNICAL SPECIFICATIONS.
 - WHERE MECHANICAL SERVICES PASS THROUGH FIRE COMPARTMENTATION CEILING VOIDS, FLOOR VOIDS AND STRUCTURAL WALLS THE CONTRACTOR SHALL SLEEVE/SEAL THE OPENING WITH AN ACOUSTIC AND FIRE SEALANT APPROVED BY THE CLIENTS REPRESENTATIVE.
 - THE CONTRACTOR SHALL REFER TO THE RECORD DRAWING OR REQUEST FROM THE BUILDING OWNER FOR DETAILS OF FIRE COMPARTMENTATION.
 - STRIP OUT WORKS TO INCLUDE REMOVAL AND CORRECT DISPOSAL OF TWO GAS FIRED BOILERS ASSOCIATED GAS PIPEWORK AND SAFETY DEVICES, FLUES AND LOW LOSS HEADERS.
 - ALL PENETRATIONS THROUGH EXISTING STRUCTURES FROM FLUE REMOVAL SHALL BE REPAIRED AND MADE GOOD.
 - EXISTING PUMPS AND WATER CONDITIONING DEVICES TO BE RETAINED.

Legend	
	LOW TEMPERATURE HOT WATER FLOW
	LOW TEMPERATURE HOT WATER RETURN
	MEDIUM TEMPERATURE HOT WATER FLOW
	MEDIUM TEMPERATURE HOT WATER RETURN
PHE	PLATE HEAT EXCHANGER

P01	Planning Issue	22/11/2022	SCPN
P00	Stage 4a - Tender Issue	14/11/2019	SCPN
Rev	Description	Date	Appr/Olm

PLANNING

Status/Suitability of Drawing

BUROHAPPOLD ENGINEERING

Camden Mill
Lower Bristol Road
Bath BA2 3DQ
UK

Tel: +44 (0)1225 320600
Fax: +44 (0)870 787 4148
Email: 0042994@burohappold.com
Web: www.burohappold.com

Architect N/A
Project **UCL Bloomsbury Campus**
Dwg Title **Proposed District Heating Pipework Plantroom Details**

Scale@ A1 1:25
Drawn by SC
Drawing No. UCL-BHE-00-00-DR-AM-2002

Job No. 0042994
Checked by PN
Date 14/11/2019
Revision