

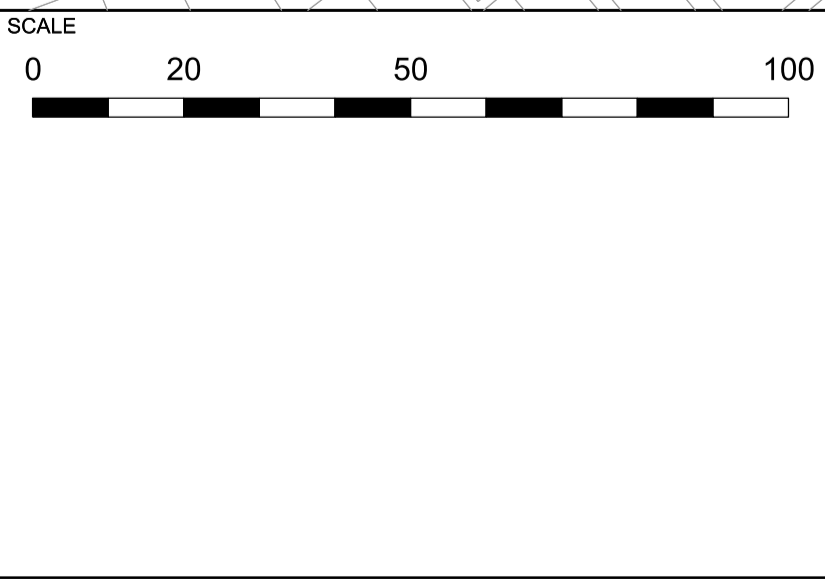


KEY
PLANNING APPLICATION BOUNDARY
LAND FOR DETAILED PLANNING PERMISSION
DEVELOPMENT PLOT REFERENCE
PREDOMINANTLY COMMERCIAL / BUSINESS / SERVICE (CLASS E) & SUI GENERIS LEISURE
PREDOMINANTLY RESIDENTIAL AND ANCILLARY (CLASS C3)

REV	DATE	DESCRIPTION
P01	28/01/22	ISSUED FOR PLANNING
P02	18/11/22	ISSUED FOR PLANNING

REFERENCE NOTES

- Refer to Development Specification for further description of this plan, how it is to be secured by condition, and the quantum that applies.
- Refer to Design Code for further description of this plan, particular guidelines and principles for the Development.



NOTE

When this drawing is issued in uncontrolled CAD format it will be accompanied by a PDF version and is issued to enable the recipient to prepare their own documents / models / drawings for which they are solely responsible. The recipient should report all drawing errors, omissions and discrepancies to the architect. All dimensions should be checked on site by the contractor and such dimensions shall be the contractor's responsibility.

Allford Hall Monaghan Morris Limited accepts no responsibility or liability for:-
 - any use of this drawing by parties other than the party for whom it was prepared or for purposes other than those for which it was prepared
 - any alterations or additions to or discrepancies arising out of changes to the background information on which the drawings are based that was current at the time of issue, and which occur to that information after it has been issued by AHMM
 - any loss or degradation of the information held in this drawing resulting from the translation from the original file format to any other file format or from the recipient's reading of it in any other programme or any version of the programme other than that which was used to prepare it
 - the accuracy of survey information provided by others or for any costs, claims, proceedings and expenses arising out of reliance on such information
 - any scaling from this drawing other than by the local planning authority solely for the purposes of the planning application to which it relates

LOCATION

ALLFORD HALL MONAGHAN MORRIS
 ARCHITECTS Ltd
 MORELANDS, 5-23 OLD STREET LONDON EC1V 9HL
 TEL 020 7251 5261 FAX 020 7251 5123 WEB WWW.AHMM.CO.UK

job title
O2 MASTERPLAN SITE

drawing title / location
PROPOSED PREDOMINANT UPPER LEVEL USES

drawn by ER	checked RMC	scale 1:1000@A1; 1:2000@A3	status PLANNING
project 19066	zone X	source (02) P109 P02	drawing no. / revision

© Allford Hall Monaghan Morris Limited