



2. TIMBER
Accoya or similar modified softwood naturally weathered to silver grey colour



8. CHARRED TIMBER
Accoya or similar modified charred timber for part of North facade only



7. GLAZED BALUSTRADE
Clear glazed balustrade with slim stainless steel trim



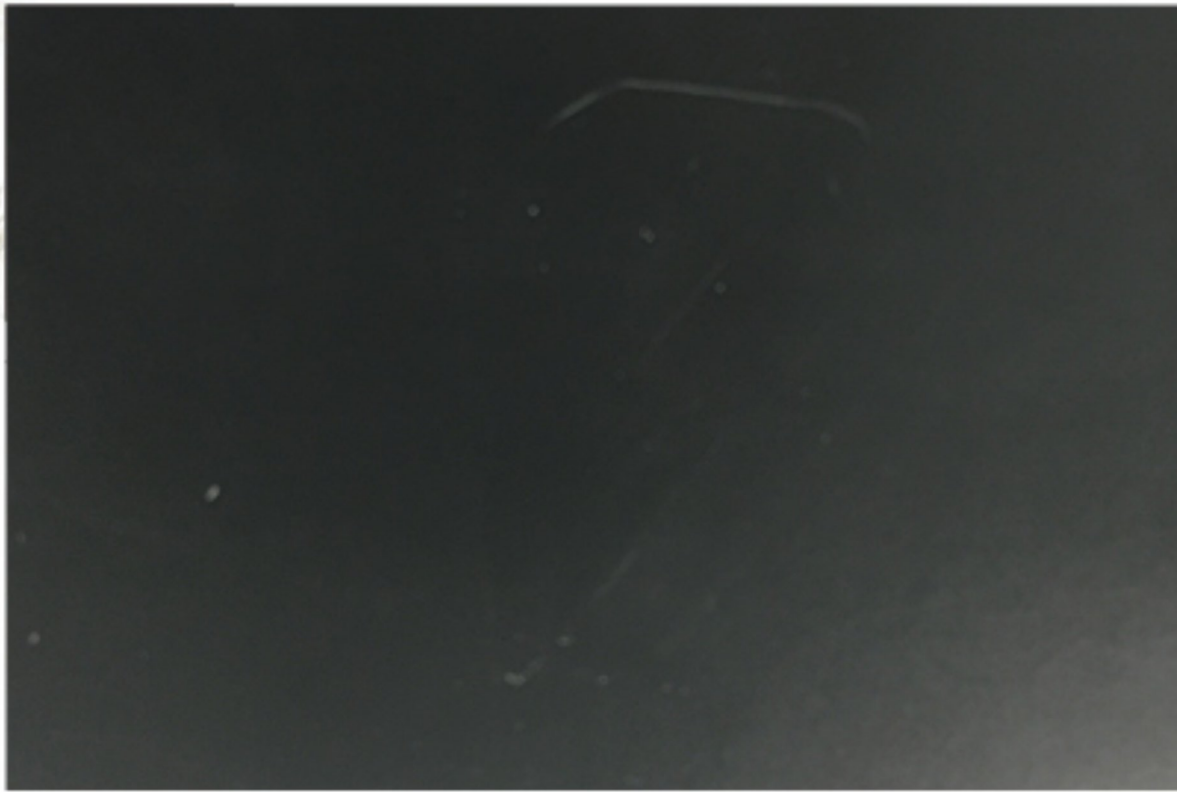
6. WATERPROOF MEMBRANE
Single-ply PVC membrane on roof finish and parapets



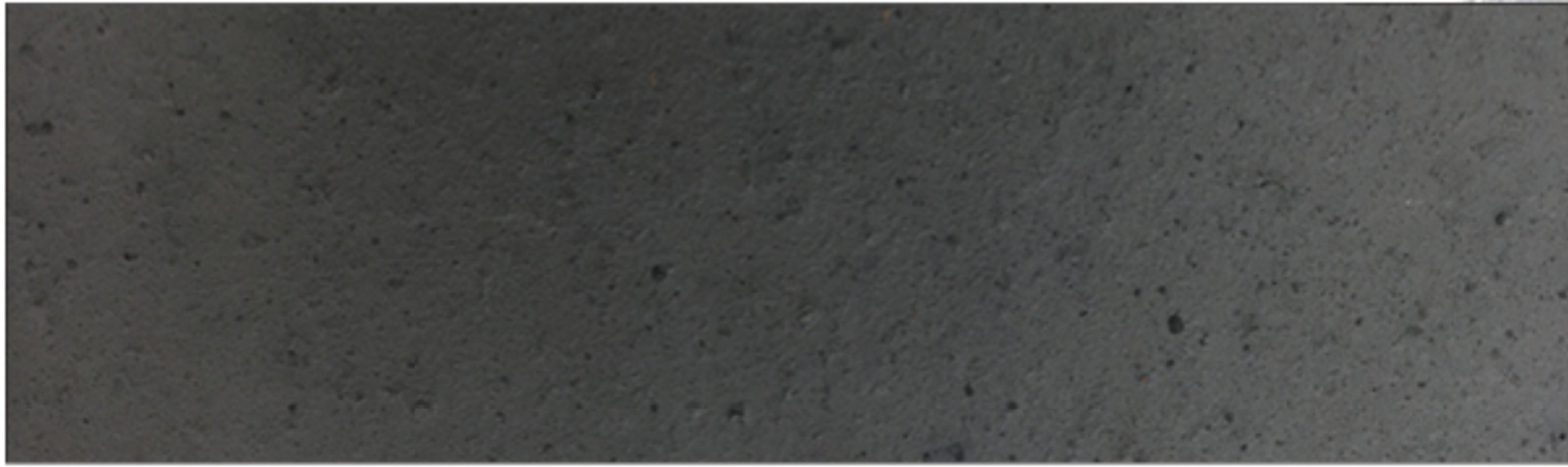
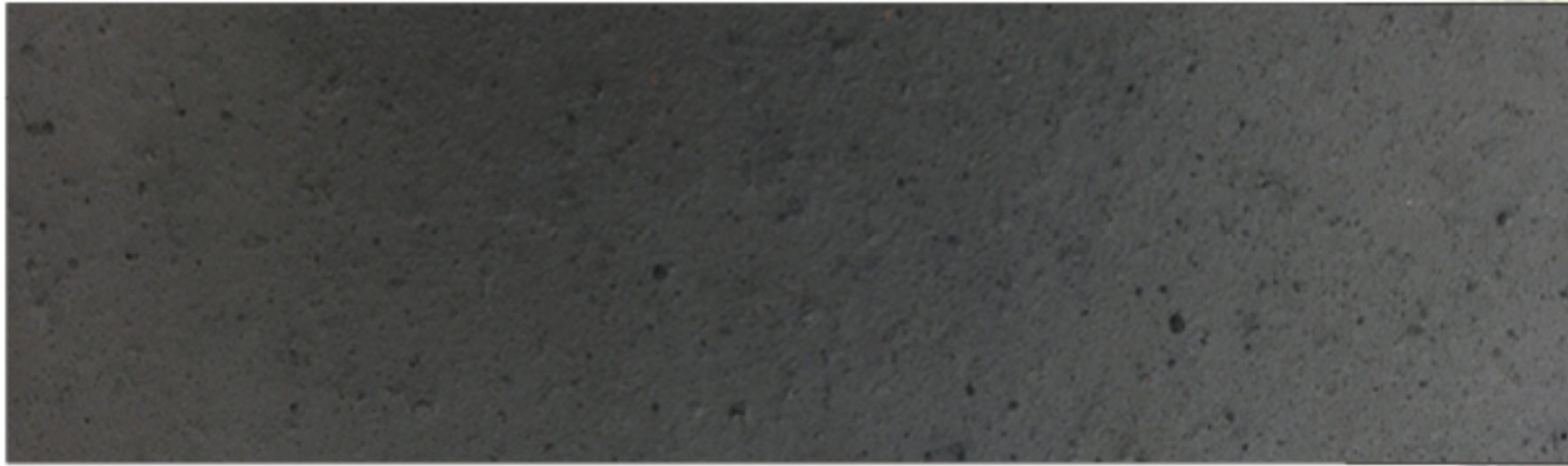
5. GREEN ROOF
Intensive Green Roof with deep growing substrate and biodiverse planting of grasses, herbaceous and shrub planting.



4. STAINLESS STEEL
Kick plates, handles and special panels in brushed finish



3. METAL
Dark grey anodized metal panels and louvres



1. BRICK
Engineering brick for walls, retaining walls and pavours in dark grey or similar



ISSUED FOR ACCEPTANCE

P02	EAR-CW_Schedule 17 LA Submission	SS	VD			HS2 accepts no responsibility for any circumstances which arise from the reproduction of this document after alteration, amendment or abbreviation or if it is issued in part or issued incompletely in any way.	<div>Legends/Notes:</div> <div>G1. All dimensions are in millimeters unless noted otherwise.</div> <div>G2. All levels are in metres relative to OD (Ordnance Datum, Newlyn) unless noted otherwise.</div> <div>G3. Global coordinates are indicated by Eastings (E) and Northings (N) to the project snake grid.</div> <div>G4. All angles are in degrees (0° 360°) unless noted otherwise.</div> <div>G5. Dimensions are not to be scaled from the drawing.</div> <div>G6. Dimensions and levels are approximate and subject to Detail Design.</div> <div>G7. Landscaped areas subject to future Schedule 17 approvals.</div> <div>G8. Only the location for boundary walls and fencing is for approval. The design of these structures are not for approval.</div>	<div>HS2</div> <div>Registered in England Registration No. 06791686</div> <div>Registered office: 2 Snow Hill, Queensway, Birmingham, B4 6GA</div> <div>OFFICIAL</div> <div>Creator/Originator</div> <div>SCS JV - Design House</div>	Zone		Adelaide Road Vent Shaft		Project/Contract		HS2-MWCC SCS Sector S1	
P03	EAR-CW_Schedule 17 Final Submission	SS	VD			© Crown Copyright and database right 2018. All rights reserved. Ordnance Survey Licence number 100049190			Design Stage		Detail Design		Discipline/Function		Architectural	
P04	EAR-CW_Schedule 17 Final Re-Sub A	SS	VD			© Crown Copyright material is reproduced with the permission of Land Registry under delegated authority from the Controller of HMSO.			Drawing Title	Adelaide Road Vent Shaft		Schedule 17 Plans and Specifications	Drawn	Checked	Approved	
C01	EAR-CW_Schedule 17 Final Re-Sub A	SS	VD	GR		This material was last updated on 2018 and may not be copied, distributed, sold or published without the formal permission of Land Registry. Only an official copy of a title plan or register obtained from the Land Registry may be used for legal or other official purposes.							P.Costa	V.De Siqueira	D.Griffith	
P05	EAR-MW_Schedule 17 Final Re-Subm. A	PC	VD	---									Date	Scale	Size	
Rev	Description	Drawn	Checked	Con App	HS2 App	Scale with caution as distortion can occur.						Drawing No.		Rev.		
												1MC03-SCJ_SDH-AR-DPH-SS02_SL01-449091		P05		