


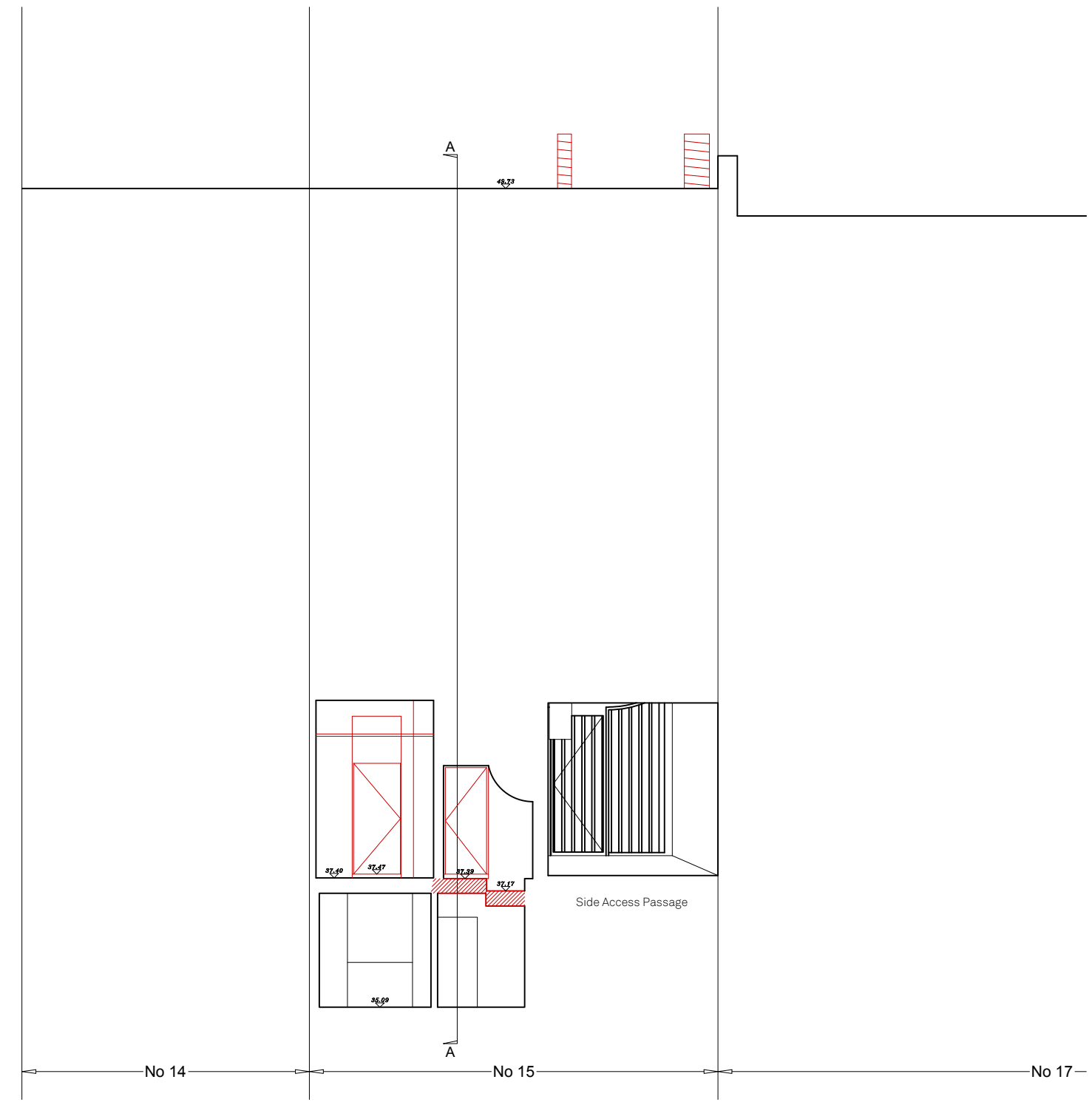
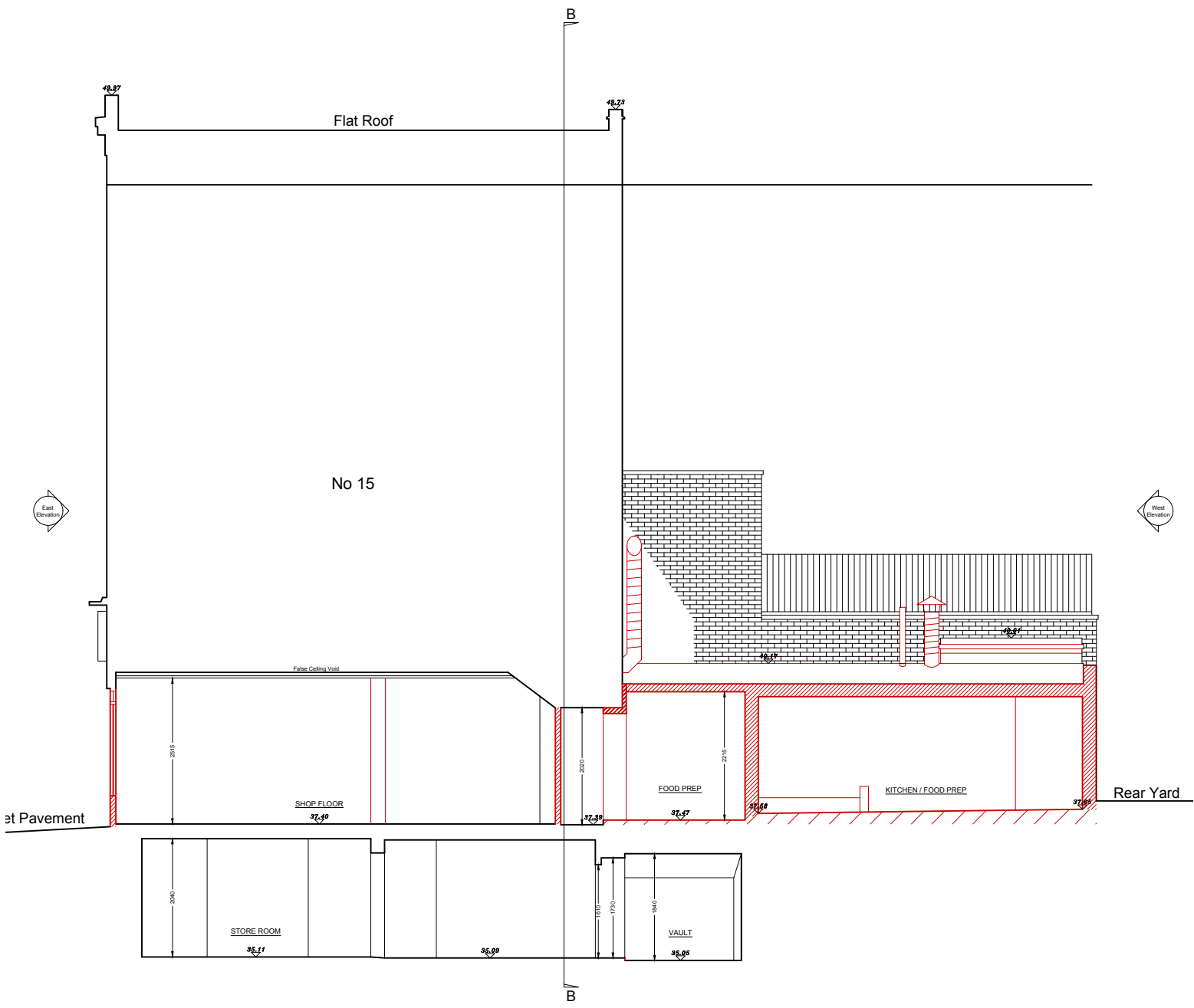


DEMOLITION KEY

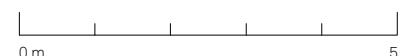
-  ELEMENTS TO BE DEMOLISHED
-  FIXTURES/FITTINGS REMOVED
-  EXCAVATION WORK



18/11/22 DS/BW PLANNING  
 REV DATE DRAWN/CHK DESCRIPTION

**15 York Way**  
 DEM140 rev - DEMOLITION SECTIONS

21111 \_ PLANNING \_ Published 17/11/22



Scale 1:100 @ A3

Do not scale for construction. Use figured dimensions only. All discrepancies to be verified with architect prior to ordering or construction/execution. Confirm all setting out with architect prior to construction. Drawing to be read in conjunction with all other documents. Copyright Architecture for London.

Architecture for London  
 3-5 Bleeding Heart Yard  
 London EC1N 8SJ  
 020 3637 4236  
 architectureforlondon.com

**Architecture  
 for London.**