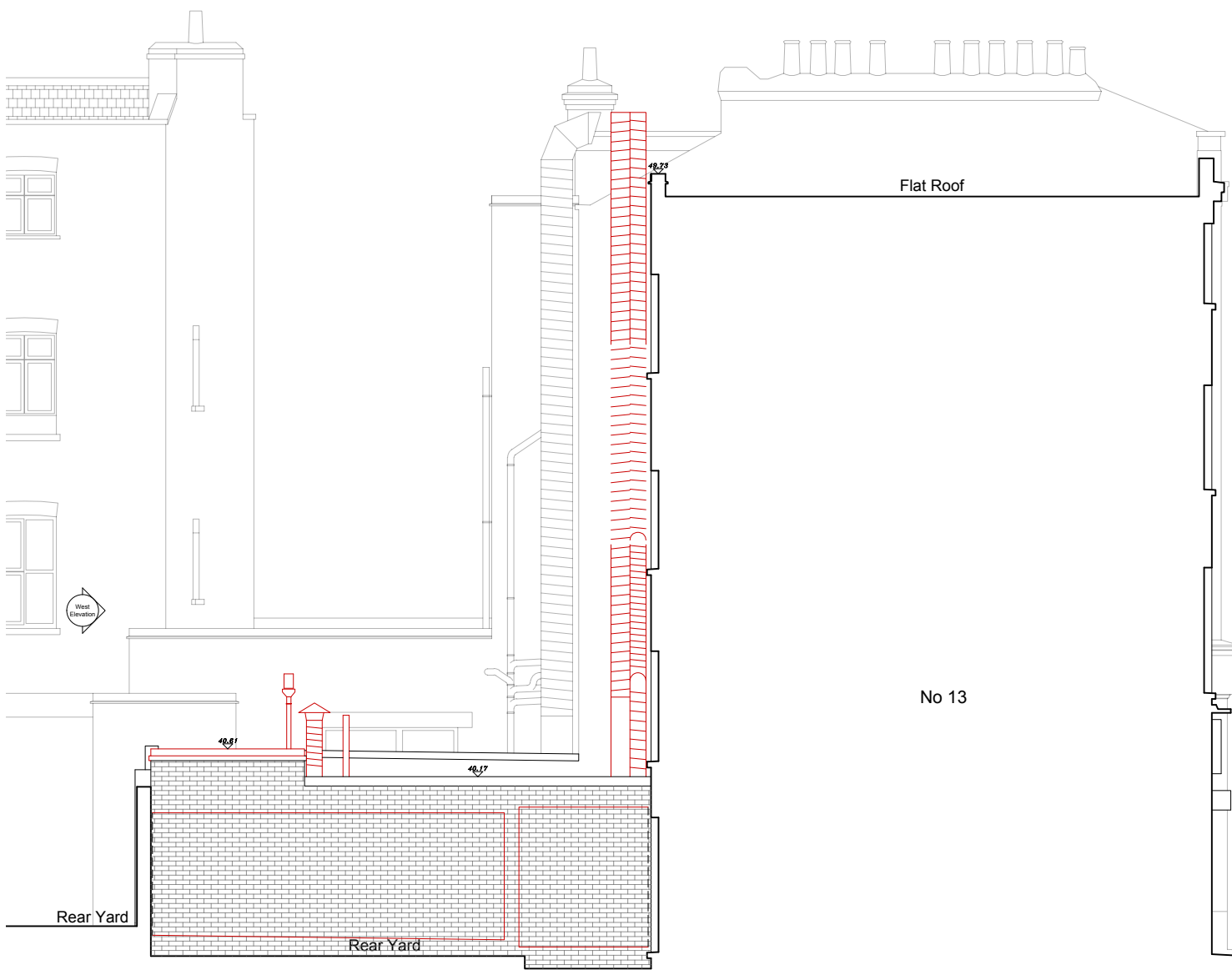


DEMOLITION KEY

- ELEMENTS TO BE DEMOLISHED
- FIXTURES/FITTINGS REMOVED
- EXCAVATION WORK



18/11/22 DS/BW PLANNING
 REV DATE DRAWN/CHK DESCRIPTION

15 York Way
 DEM131 rev - DEMOLITION SOUTH AND WEST ELEVATIONS

21111 _ PLANNING _ Published 17/11/22



Do not scale for construction. Use figured dimensions only. All discrepancies to be verified with architect prior to ordering or construction/execution. Confirm all setting out with architect prior to construction. Drawing to be read in conjunction with all other documents. Copyright Architecture for London.

Architecture for London
 3-5 Bleeding Heart Yard
 London EC1N 8SJ
 020 3637 4236
 architectureforlondon.com

**Architecture
 for London.**