

CHAPTER 6

PROPOSAL
NOVEMBER 2022

The proposed scheme seeks to create a high-end care home with provisions for 78 bedrooms and ancillary communal space within one building arranged on four stories above ground, plus ancillary and plant to the lower ground level.

The massing and elevations have been carefully considered and designed to promote a high-quality design whilst harmonizing within the surroundings.

Limitations to the developable area of the site result in the importance of a considered aesthetic of the development.

The building has been designed to encourage views out onto the internal green spaces and away from neighbouring properties.

Fenestration has been limited on elevations closest to any boundaries. In these areas, decorative infill panels have been proposed to limit views.

The upper level has been designed to have a contrasting colour palette to the lower floors, furthermore, a contemporary flat roof also promotes the contemporary design.

Together the development along the streetscape will enhance and enrich the conservation area through the continuation of a contemporary design and sensitive treatment of the wider associated plot.





Vehicular Access



Pedestrian Access



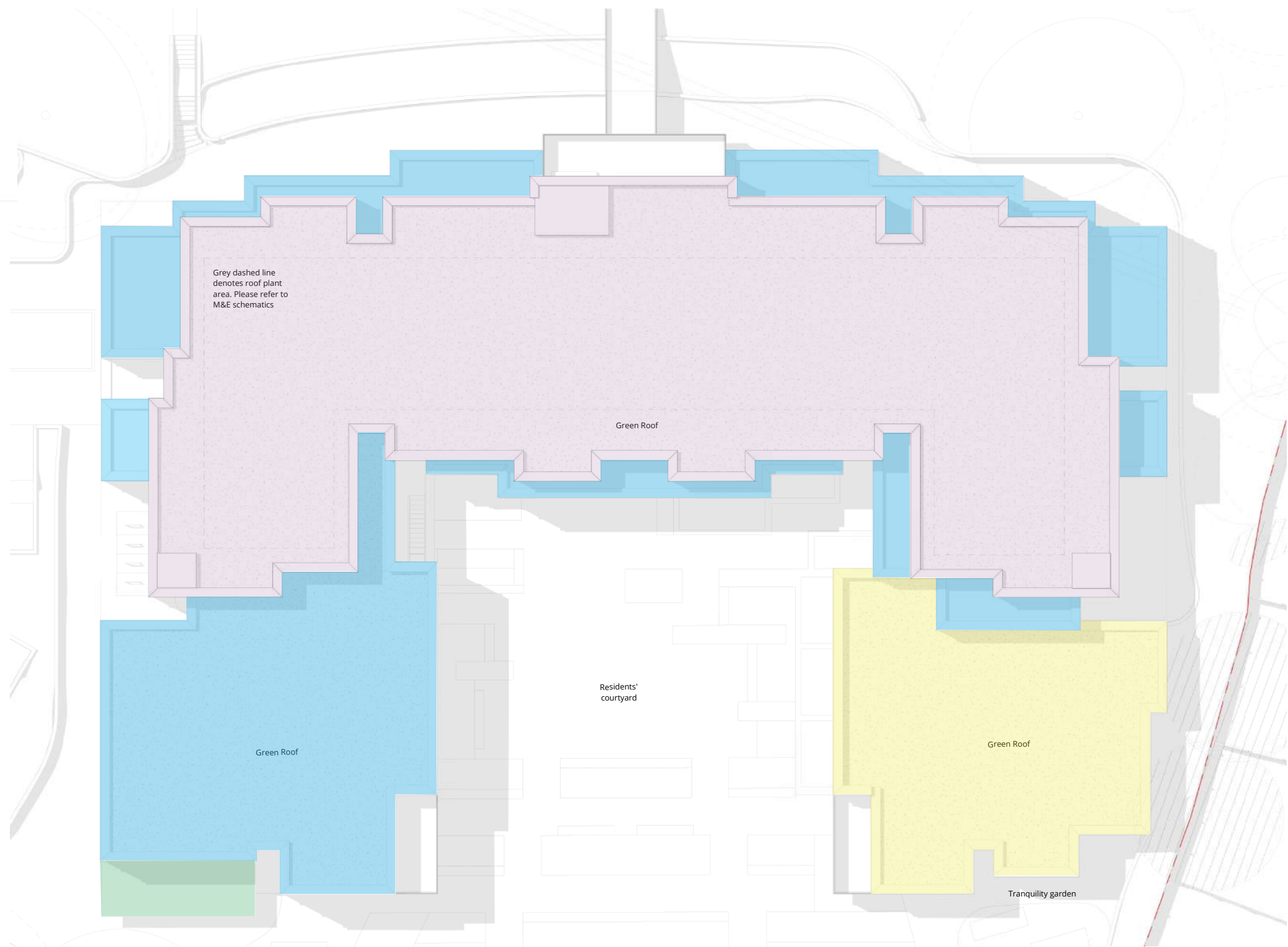
Wheelchair Access

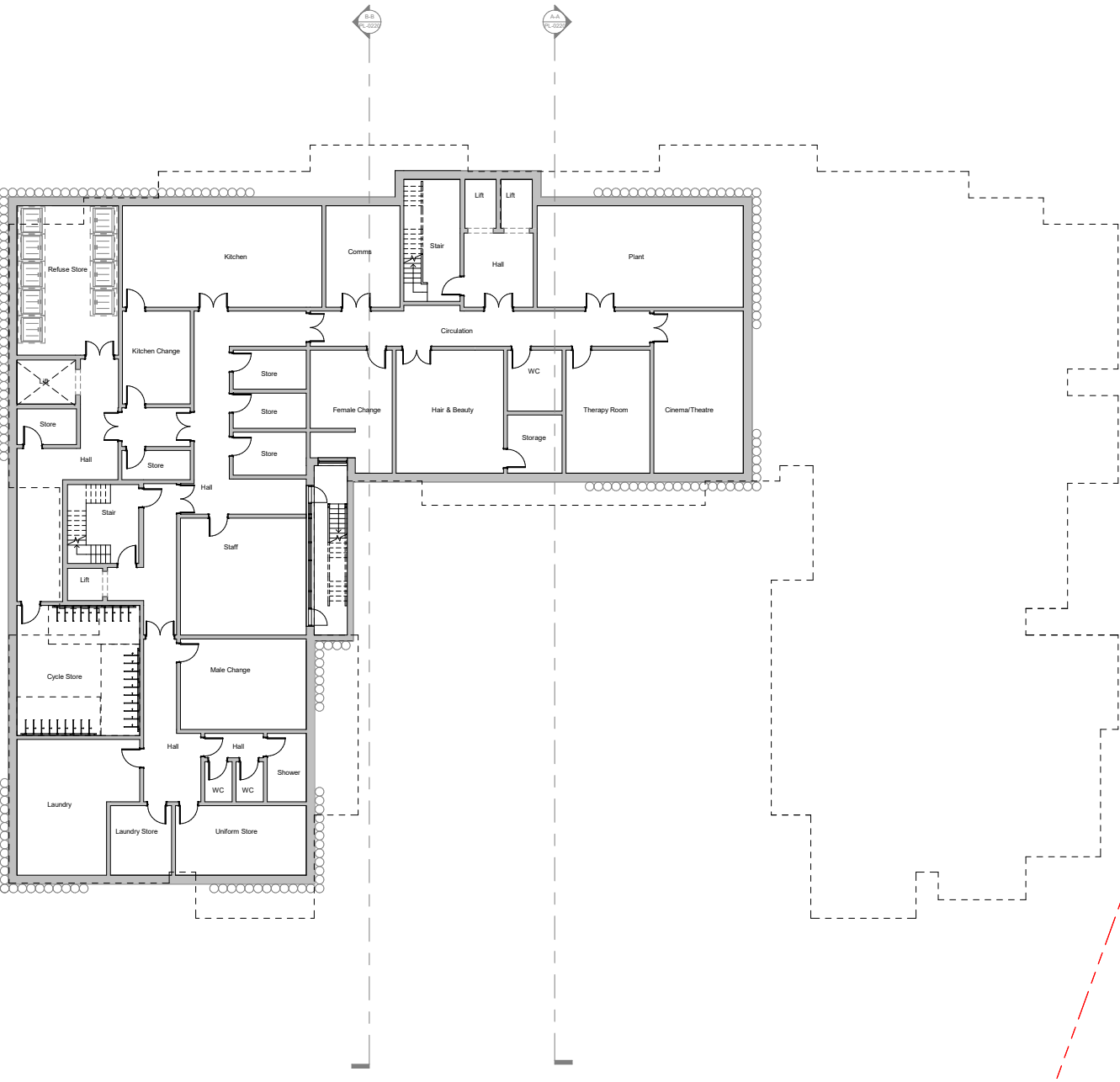


Delivery Access

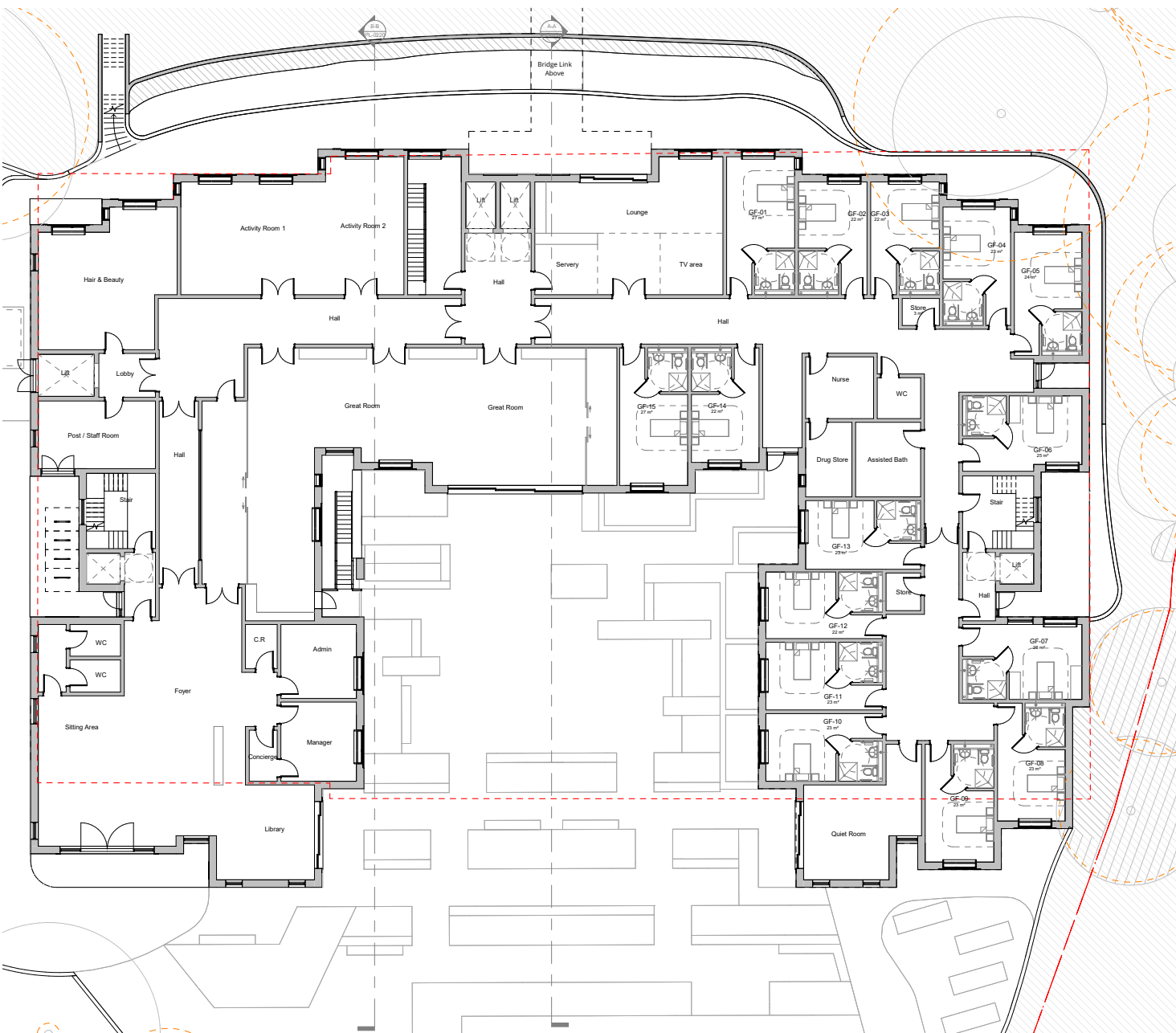
- Site Boundary
- Vehicular Access
 - Disabled Parking
 - Ambulance Parking
 - Delivery Parking
- Pedestrian Access
- Wheelchair Access

- Entrance canopy
- 2 storeys above ground
- 3 storeys above ground
- 4 storeys above ground

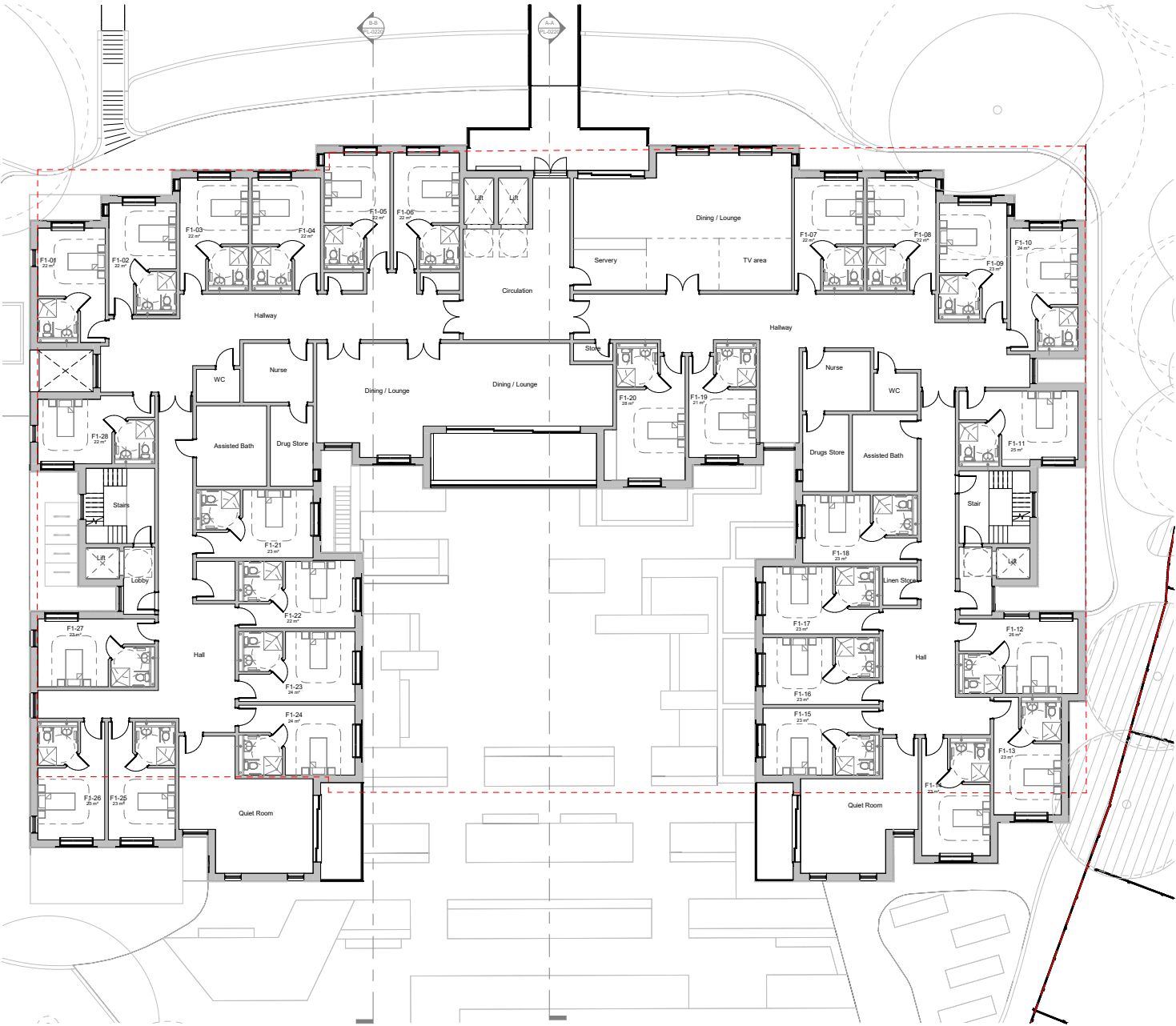




Lower Ground Floor Plan



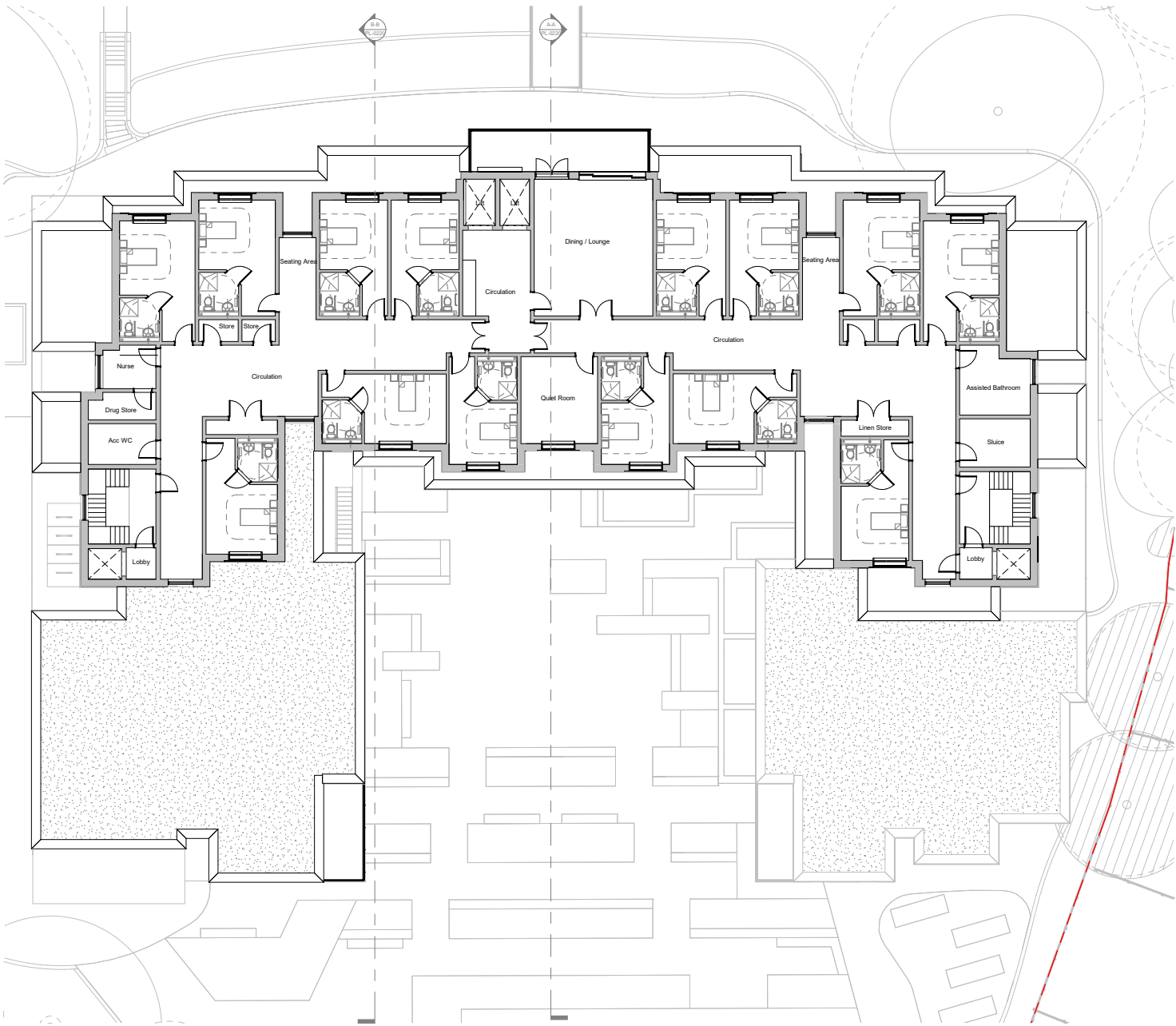
Ground Floor Plan



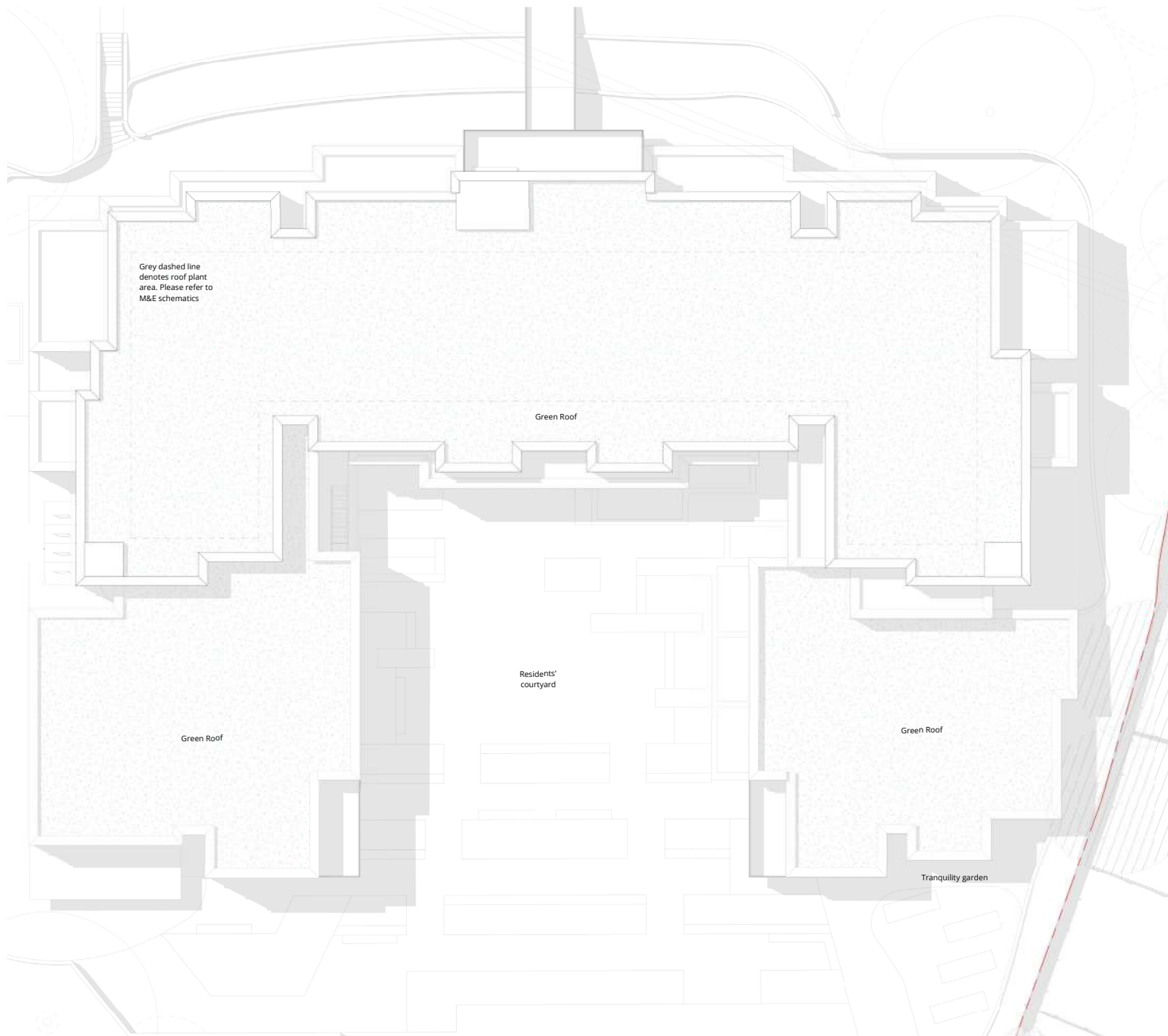
First Floor Plan



Second Floor Plan



Third Floor Plan



Roof Plan