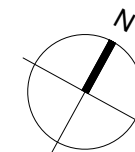
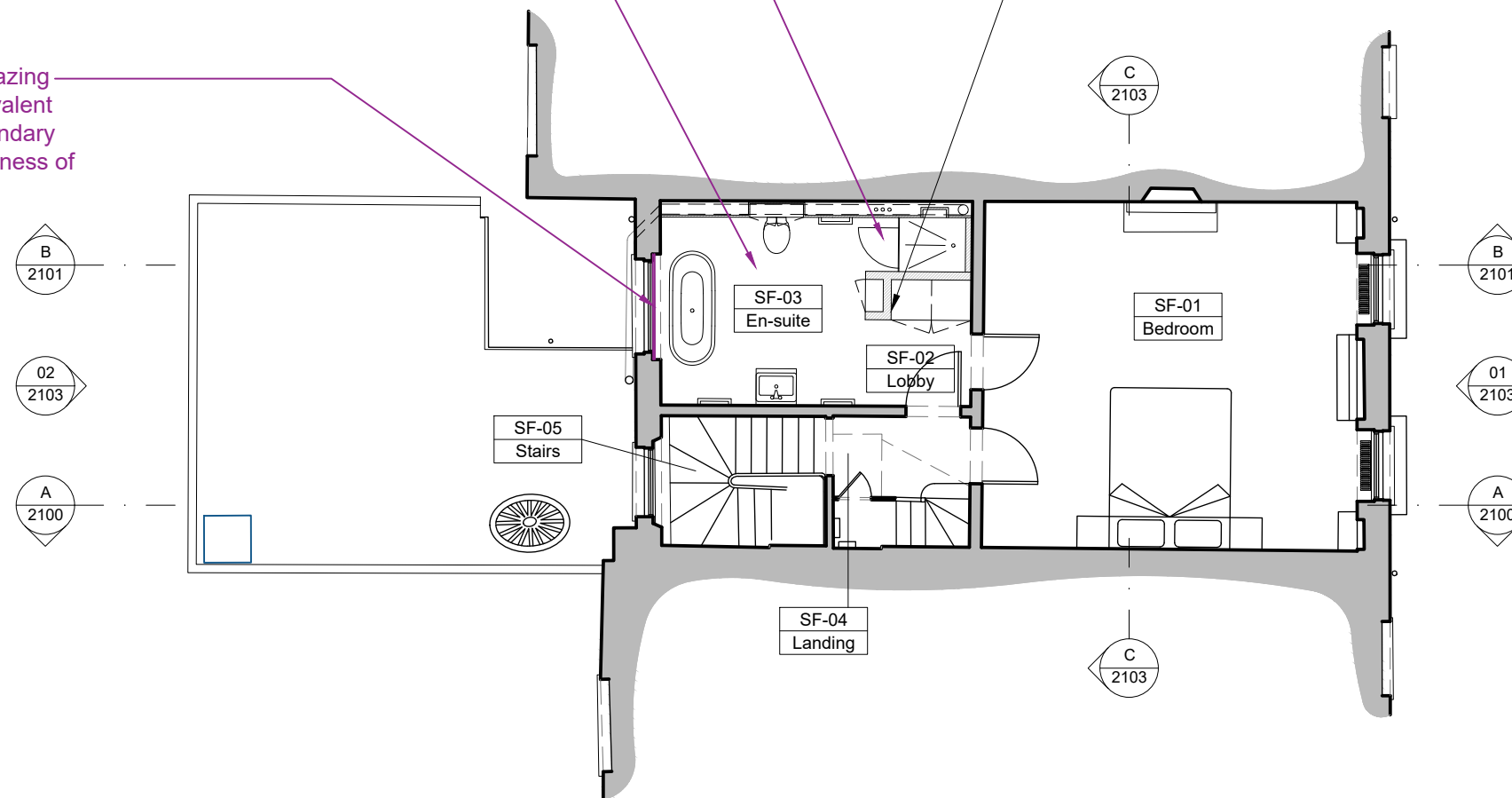


- Read all drawings in conjunction with associated specification, schedules and documents.
- Read all the notes on this drawing.
- Based on survey information by others.
- Drawing's level of detail not suitable for construction.
- Contractor to check and confirm dimensions on site.
- All fire ratings and new works subject to Building Control approval.

Proposed alterations.

Install 5no. recessed lights in — bathroom, exact position to be determined on site.

— New bathroom, lightweight partitions and cabinets consented under Planning Permission (Ref. 2021/3925/P) and Listed Building Consents (Ref. 2021/4813/L and Ref. 2022/2786/L).



Purpose of Issue:  
FOR\_PLANNING

0 1 2 5

Scale 1:100 m

Notes

1. Any dwg format drawing is to be read in conjunction with and at the scale of the accompanying pdf.

2. Where colours other than black or grey are used, the drawing must be plotted in colour.

3. For status 'C' (Construction) drawings all dimensions are to be checked on site by the contractor, scaling is for Local Authority purposes only.

4. Unless otherwise indicated, all dimensions are in millimeters.

5. All information on this drawing is to be read in conjunction with the relevant Donald Insall Associates specification and trade contractors' drawings and information by specialists.

6. In the event of any discrepancy, please contact us immediately.

7. This drawing may contain survey information by others and is to be used solely for the purposes for which it was issued.

8. These are uncontrolled documents issued for information purposes only. If you have any queries regarding the drawings, please contact DIA immediately.

9. Please note DIA cannot be held responsible for any errors arising from changes made to an uncontrolled dwg file.

© 2019 DONALD INSALL ASSOCIATES LTD

Drawing Status

F Feasibility

S Sketch Design

P Planning

B Building Control

D Design Development

M Measurement

T Tender

C Construction

R Record

Rev

Date

Dwn

Auth

Revision

0

15-12-22

MOV

RD

Issued for Planning and LBC

Rev

Date

Dwn

Auth

Revision

Donald Insall Associates

Chartered Architects and Historic Building Consultants

12 Devonshire Street  
London W1G 7AB  
(+44) 020 7245 9888  
london@insall-architects.co.uk

25 John Street, London

Project

JSC25.01

No

2003

Scale (A3)

1: 100

Status

3P

Revision

0