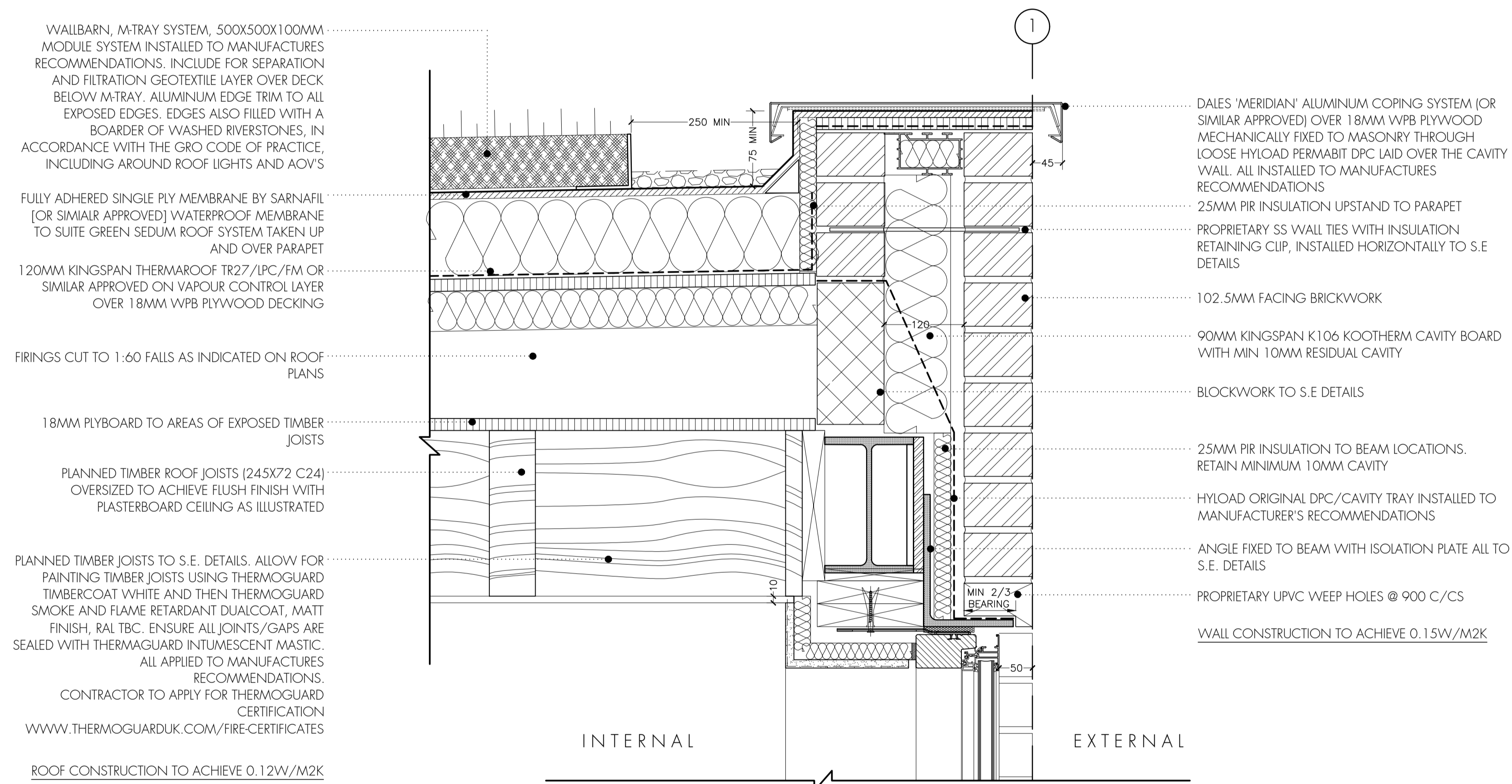


Do not scale off this drawing.

All indicated dimensions to be checked and verified on site by the Main Contractor before commencement of any fabrication drawings or work whatsoever on site.

Report all discrepancies to the Architect immediately. This drawing is to be read in conjunction with all the related Architect's and Structural Engineer's drawings, details and all relevant information.



WALLBARN, M-TRAY SYSTEM, 500X500X100MM MODULE SYSTEM INSTALLED TO MANUFACTURES RECOMMENDATIONS. INCLUDE FOR SEPARATION AND FILTRATION GEOTEXTILE LAYER OVER DECK BELOW M-TRAY. ALUMINUM EDGE TRIM TO ALL EXPOSED EDGES. EDGES ALSO FILLED WITH A BOARDER OF WASHED RIVERSTONES, IN ACCORDANCE WITH THE GRO CODE OF PRACTICE, INCLUDING AROUND ROOF LIGHTS AND AOV'S

FULLY ADHERED SINGLE PLY MEMBRANE BY SARNAFIL [OR SIMILAR APPROVED] WATERPROOF MEMBRANE TO SUITE GREEN SEDUM ROOF SYSTEM TAKEN UP AND OVER PARAPET

120MM KINGSPAN THERMAROOF TR27/IPC/FM OR SIMILAR APPROVED ON VAPOUR CONTROL LAYER OVER 18MM W/PB PLYWOOD DECKING

FIRINGS CUT TO 1:60 FALLS AS INDICATED ON ROOF PLANS

18MM PLYBOARD TO AREAS OF EXPOSED TIMBER JOISTS

PLANNED TIMBER ROOF JOISTS (245X72 C24) OVERSIZED TO ACHIEVE FLUSH FINISH WITH PLASTERBOARD CEILING AS ILLUSTRATED

PLANNED TIMBER JOISTS TO S.E. DETAILS. ALLOW FOR PAINTING TIMBER JOISTS USING THERMOGUARD TIMBERCOAT WHITE AND THEN THERMOGUARD SMOKE AND FLAME RETARDANT DUALCOAT, MATT FINISH, RAL TBC. ENSURE ALL JOINTS/GAPS ARE SEALED WITH THERMAGUARD INTUMESCENT MASTIC. ALL APPLIED TO MANUFACTURES RECOMMENDATIONS. CONTRACTOR TO APPLY FOR THERMOGUARD CERTIFICATION WWW.THERMOGUARDUK.COM/FIRE-CERTIFICATES

ROOF CONSTRUCTION TO ACHIEVE 0.12W/M2K

DALES 'MERIDIAN' ALUMINUM COPING SYSTEM (OR SIMILAR APPROVED) OVER 18MM W/PB PLYWOOD MECHANICALLY FIXED TO MASONRY THROUGH LOOSE HYLOAD PERMABIT DPC LAID OVER THE CAVITY WALL. ALL INSTALLED TO MANUFACTURES RECOMMENDATIONS

25MM PIR INSULATION UPSTAND TO PARAPET PROPRIETARY SS WALL TIES WITH INSULATION RETAINING CLIP, INSTALLED HORIZONTALLY TO S.E DETAILS

102.5MM FACING BRICKWORK

90MM KINGSPAN K106 KOOTHEM CAVITY BOARD WITH MIN 10MM RESIDUAL CAVITY

BLOCKWORK TO S.E DETAILS

25MM PIR INSULATION TO BEAM LOCATIONS. RETAIN MINIMUM 10MM CAVITY

HYLOAD ORIGINAL DPC/CAVITY TRAY INSTALLED TO MANUFACTURER'S RECOMMENDATIONS

ANGLE FIXED TO BEAM WITH ISOLATION PLATE ALL TO S.E. DETAILS

PROPRIETARY UPVC WEEP HOLES @ 900 C/C/S

WALL CONSTRUCTION TO ACHIEVE 0.15W/M2K

rev.	rev. date	rev. description

tasou
associates architects + structural engineers

PLANNING CONDITION

4 Amwell Street, London, EC1R 1UG
T:020 7713 7070 F:020 7713 7071 E:tasou@tasou.co.uk

project
ST PANCRAS WAY (18-20)
LONDON, NW1 0QG

dwg title
DETAIL C

date OCTOBER 2022	dwg no. DD.06	rev. -
scale @ A1 1:50	job no. 1730	

