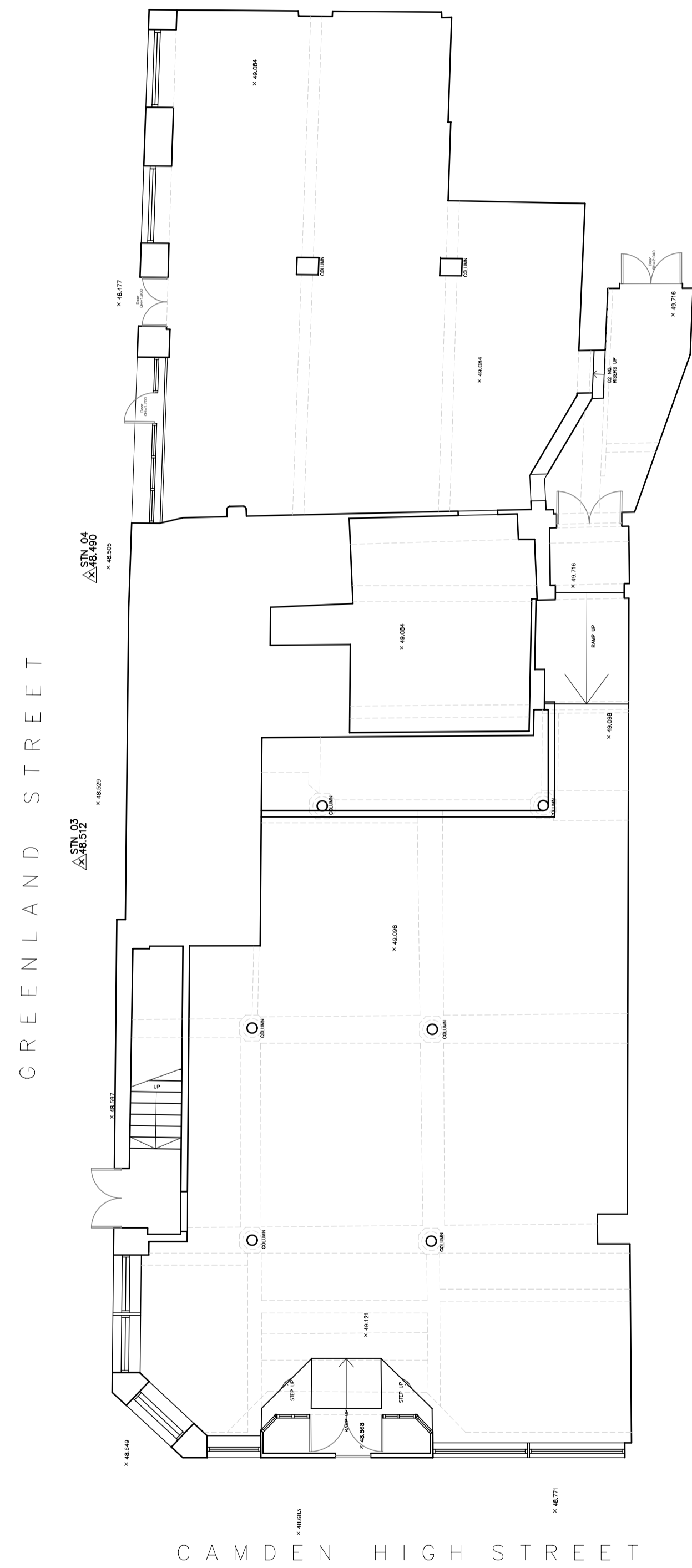
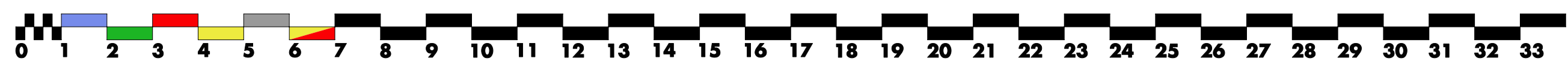


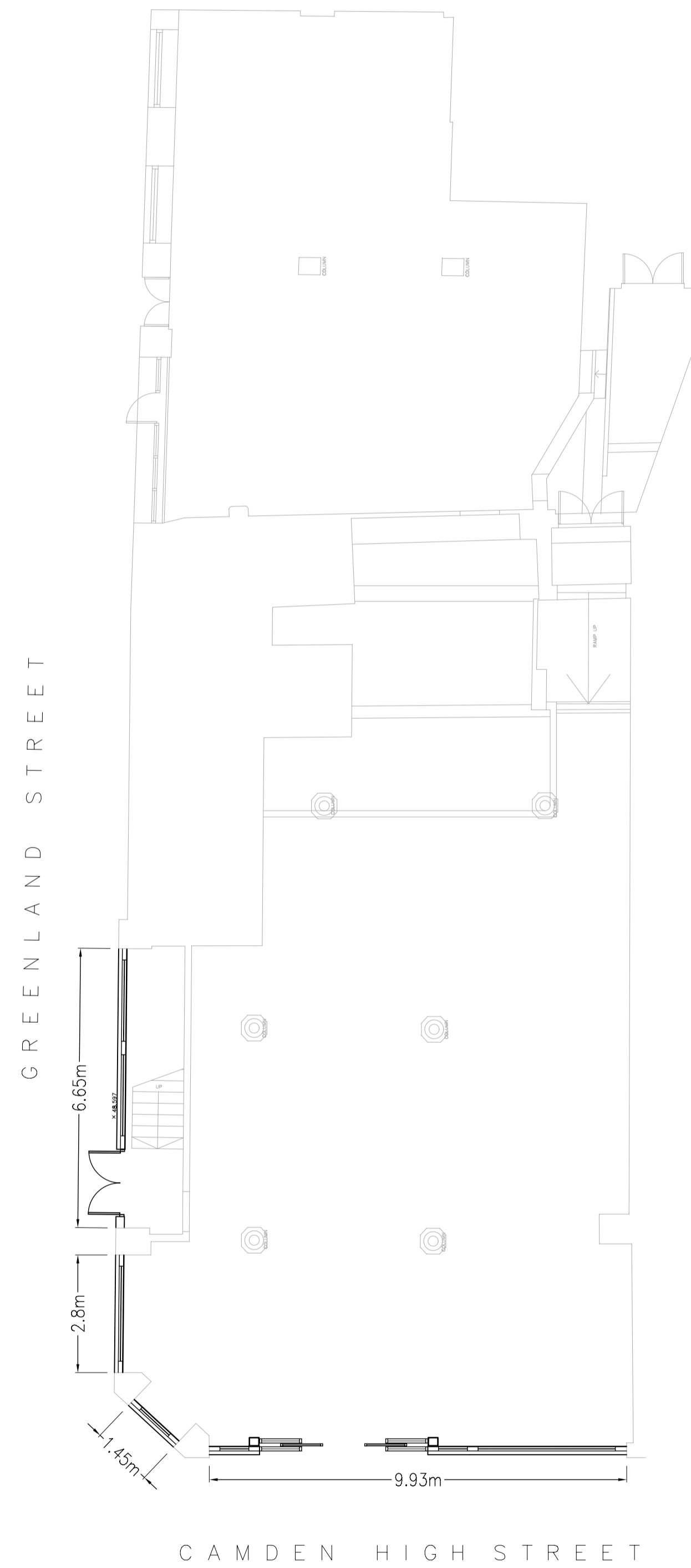
NORTH



GROUND FLOOR AS EXISTING (1:100)



NORTH



GROUND FLOOR AS PROPOSED (1:100)



B	Generally updated	09/12/2022	PTM
A	Initial issue	13/10/2022	PTM
REV	DESCRIPTION	DATE	INITIAL
STAGE:			

PLANNING

CS2 126 Colmore Row, Birmingham,
B3 3AP
T 0121 236 2222
E otlmms@CS2.co.uk

PROJECT:
136-138 Camden High Street,
London, NW1 0LU

TITLE:
Existing and Proposed Plans

DRAWN: DMU	CHECKED: OT	DATE: October 2022
SCALE: 1:100 @ A1	DRAWING NO. 2882-002	REV: B