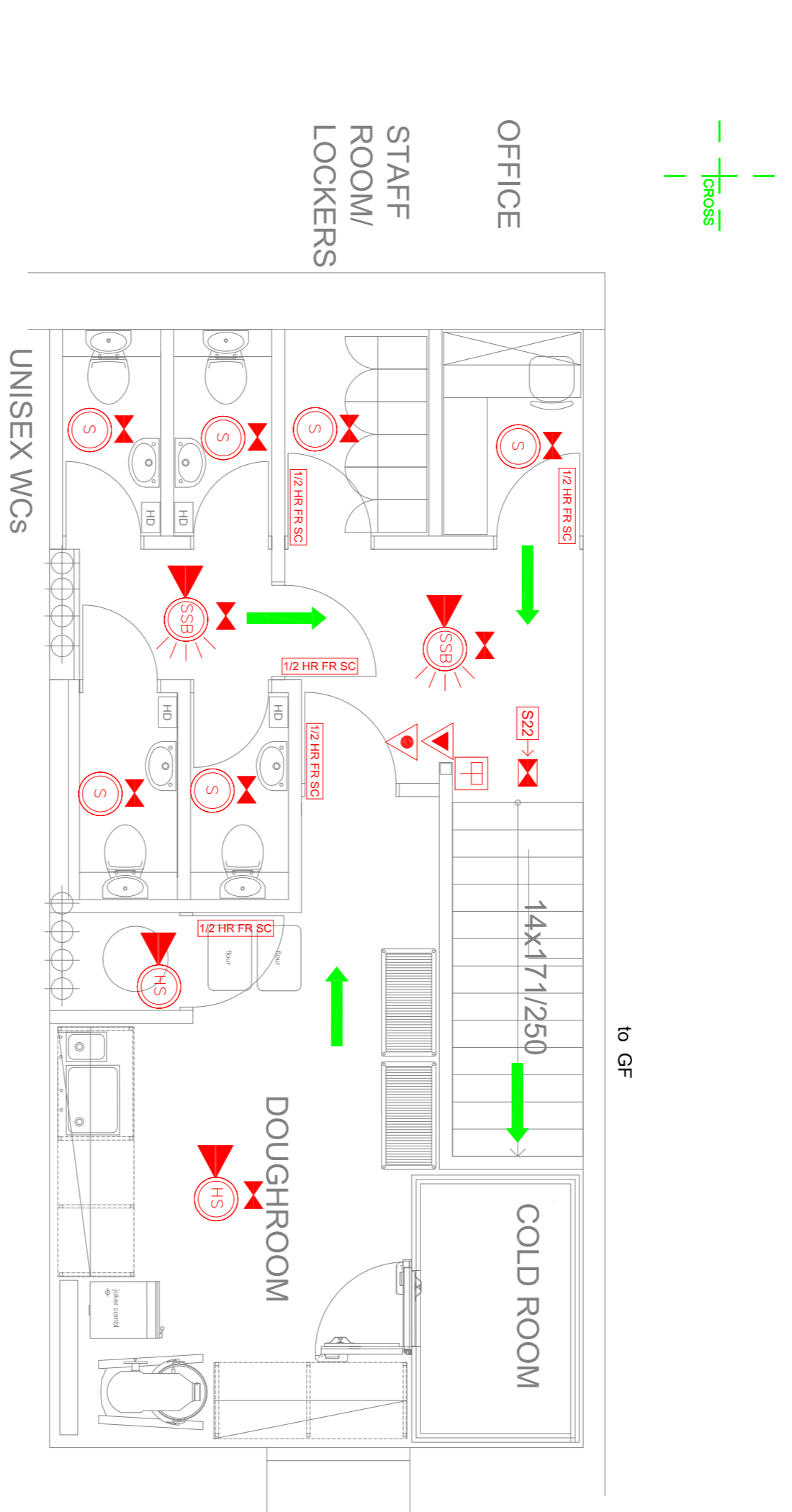
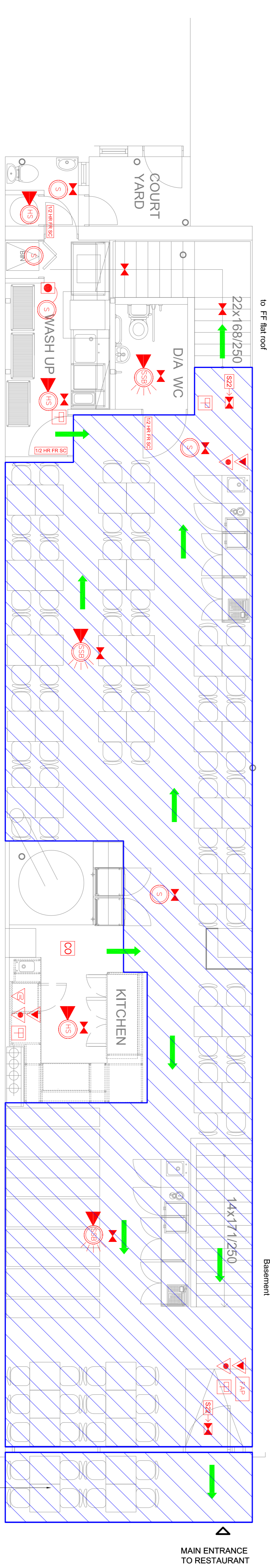


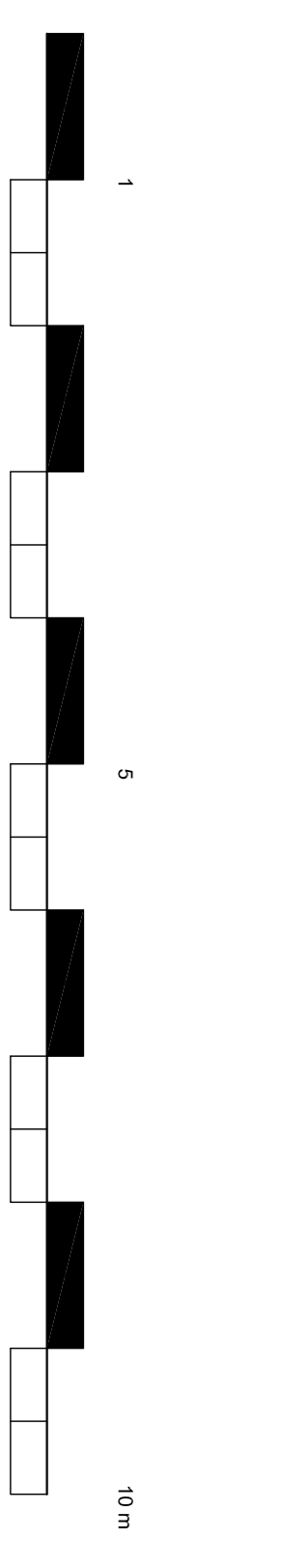
PROPOSED ROOF



PROPOSED BASEMENT

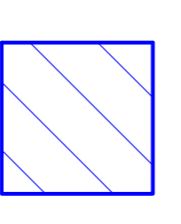


PROPOSED GROUND FLOOR



- 1) DOORS AND PARTITIONS REQUIRED TO BE FIRE RESISTING ARE TO BE IN ACCORDANCE WITH BS 476, AS AMENDED
- 2) FIRE RESISTING DOORS REQUIRED TO RESIST THE PASSAGE OF SMOKE AT AMBIENT TEMPERATURE CONDITIONS SHOULD UNLESS TESTED IN ACCORDANCE WITH BS 91A SECTION 5.1, BE FITTED WITH A SMOKE SEAL
- 3) THE FIRE ALARM SYSTEM IS TO COMPLY WITH BS 5839, PART 1. THE ATTENTION OF THE DESIGNING INSTALLING ENGINEER SHOULD BE DRAWN TO PARAGRAPH 4.2 (CONSULTATION AND RECORD) OF BS 5839, PART 1, WHICH REQUIRES CONSULTATION WITH THE AUTHORITIES
- 4) THE EMERGENCY LIGHTING INSTALLATION IS TO COMPLY WITH BS 5266, PART 1. THE ATTENTION OF THE DESIGNING INSTALLING ENGINEER SHOULD BE DRAWN TO PARAGRAPH 4.3 (CONSULTATION AND RECORD) OF BS 5266, PART 1, WHICH REQUIRES CONSULTATION WITH THE FIRE AUTHORITY
- 5) FIRE SAFETY RELATED SIGNS AND NOTICES ARE TO CONFORM TO CURRENT BRITISH STANDARD BS 5449, PART 1 1990
- 6) ILLUMINATED EXIT SIGNS ARE TO CONFORM TO BS 5449, PARTS 1 & 3.
- 7) FIRE FIGHTING EQUIPMENT IS TO COMPLY WITH BS EN3 146, BS 7863, BS 7867 AND BS 5306.
- 8) UP/DOWN STERILE SEATING FURNITURE MUST SATISFY, AS A MINIMUM STANDARD, IGNITION SOURCE 0 (CIGARETTE TEST) AND CRIB IGNITION SOURCE 5 AS SPECIFIED IN BS 6862. METHODS OF TEST FOR ASSESSMENT OF THE IGNITABILITY OF UP/DOWN STERILE SEATING ARE SPECIFIED IN BS 6862.
- IF IN ORDER TO SECURE COMPLIANCE WITH THE ABOVE STANDARDS THE FABRIC SUBMITTED FOR TEST HAS BEEN TREATED BEFOREHAND WITH A FIRE RETARDANT PRODUCT, THE TESTING LABORATORY MUST BE INSTRUCTED TO SUBJECT THE SAMPLES TO BE TREATED TO A WATER SOAK TEST, IN ACCORDANCE WITH NS 5651 PARAGRAPH 3, BEFORE THE BS 6862 TESTS ARE CARRIED OUT.
- A COPY OF THE LABORATORY TEST REPORT FROM AN ACCREDITED TESTING LABORATORY IDENTIFYING COMPLIANCE OF THE FURNISHING COMPONENT WITH THE ABOVE MENTIONED BRITISH STANDARDS MUST BE FORWARDED TO THE FIRE AUTHORITY
- 9) CURTAINS AND OTHER TEXTILE HANGINGS MUST BE INHERENTLY FLAME RETARDANT OR BE TREATED WITH A DURABLE BS 5867, PART 2, SPECIFICATION FOR FABRICS FOR CURTAINS AND DRAPES - FLAMMABILITY REQUIREMENTS
- 10) ARTIFICIAL FOLIAGE AND OTHER DECORATIVE EFFECTS ARE TO BE FIRE RETARDANT TO THE SATISFACTION OF THE FIRE AUTHORITY
- 11) LINKINGS AND SURFACE FINISHES OF WALLS AND CEILINGS ARE TO HAVE A SURFACE SPREAD OF FLAME RATING AS DERIVED IN THE CURRENT BUILDING REGULATIONS
- 12) CERTIFICATES OF INSTALLATION TEST WILL BE REQUIRED IN RESPECT OF ITEMS NUMBERED 3, 4, 6, 8 AND 9 ABOVE AND MAY BE REQUIRED FOR ITEM 2
- 13) OUTER DOORS TO ENTRANCE LOBBY ARE TO BE HELD OPEN AT ALL TIMES DURING PUBLIC TRADING PERIODS
- 14) ALL FIRE ESCAPE DOORS ARE TO INCORPORATE PANIC TYPE OPENING LATCHES FOR EMERGENCY ESCAPE
- 15) FIRE ALARM SYSTEM IS TO BE INTERLINKED WITH LANDLORDS FIRE ALARM FOR REST OF BUILDING

Total area - 2045 sq.ft (190 m2)
 Boh area - 104 m2
 Foh area - 86 m2
 Internal covers - 96
 External covers - 8



Proposed new licenced trading area 109 m2 (1173 Sq.Ft)

GROSS FLOOR AREA	EDA	COVERS
GROUND FLOOR = 140 m2 (1507 sq ft) BASEMENT = 50 m2 (538 sq ft)	GROUND FLOOR = 101 m2 (1087 sq ft) BASEMENT = 0 m2 (0.00 sq ft)	GROUND FLOOR = 96 BASEMENT = 0

NOTES

All dimensions must be checked on site and not scaled from the drawing.

This drawing is the property of Sit Art Consultancy Ltd and they reserve the copyright. It is issued on the understanding that it and its content, reproduced or disclosed in whole or part to any unauthorised party without the written permission of Sit Art Consultancy Ltd.

KEY TO SYMBOLS

	FIRE ALARM PANEL
	FIRE ALARM CALL POINT
	SMOKE DETECTOR
	SMOKE DETECTOR WITH BASE MOUNTED SOUNDER
	HEAT DETECTOR WITH BASE MOUNTED SOUNDER
	AREA COVERED BY AUTOMATIC CARBON MONOXIDE DETECTORS
	CARBON DIOXIDE (CO2) FIRE EXTINGUISHER
	WATER FIRE EXTINGUISHER
	FOAM FIRE EXTINGUISHER
	FIRE BLANKET
	AREA COVERED BY A SYSTEM OF EMERGENCY LIGHTING THAT WILL ILLUMINATE THE ESCAPE ROUTE IF THE MAINS SUPPLY FAILS. ACCORDANCE WITH BS 5266, C - CEILING, B - BULKHEAD.
	12 HOUR FIRE RESISTANT SELF CLOSING DOOR WITH SMOKE SEALS AND INTUMESCENT STRIPS
	1 HOUR FIRE RESISTANT SELF CLOSING DOOR WITH SMOKE SEALS AND INTUMESCENT STRIPS
	FIRE EXIT DOORS FITTED WITH EMERGENCY PUSH BAR FACILITY
	VISION PANEL
	FIRE EXIT NOTICE
	FIRE EXIT NOTICE WITH DIRECTIONAL ARROW
	FIRE EXIT NOTICE INTERNALLY ILLUMINATED
	ELECTROMAGNETIC DOOR HOLDER
	SMOKE DETECTOR WITH BASE MOUNTED SOUNDER AND BEACON

Sit Art Construction and Property Consultancy

4 High Street, Filton, Bedford MK45 5DU
 E-mail: enquiries@sitartconsultancy.co.uk
 Web: www.sitartconsultancy.co.uk

FRANCO MANCA 2
 337 Kenish Town Road,
 London,
 NW5 2TJ

Job Name

Site Address

Drawing Title

Proposed Licensing Layout

Status

For Information

Scale 1:500@A1 Date 24/1/2015

Scale 1:100@A3

Drawn By SK Checked KS

Drawing No. FM/KT/04

Revisions	Date	By	Rev
A	22/05/2015		