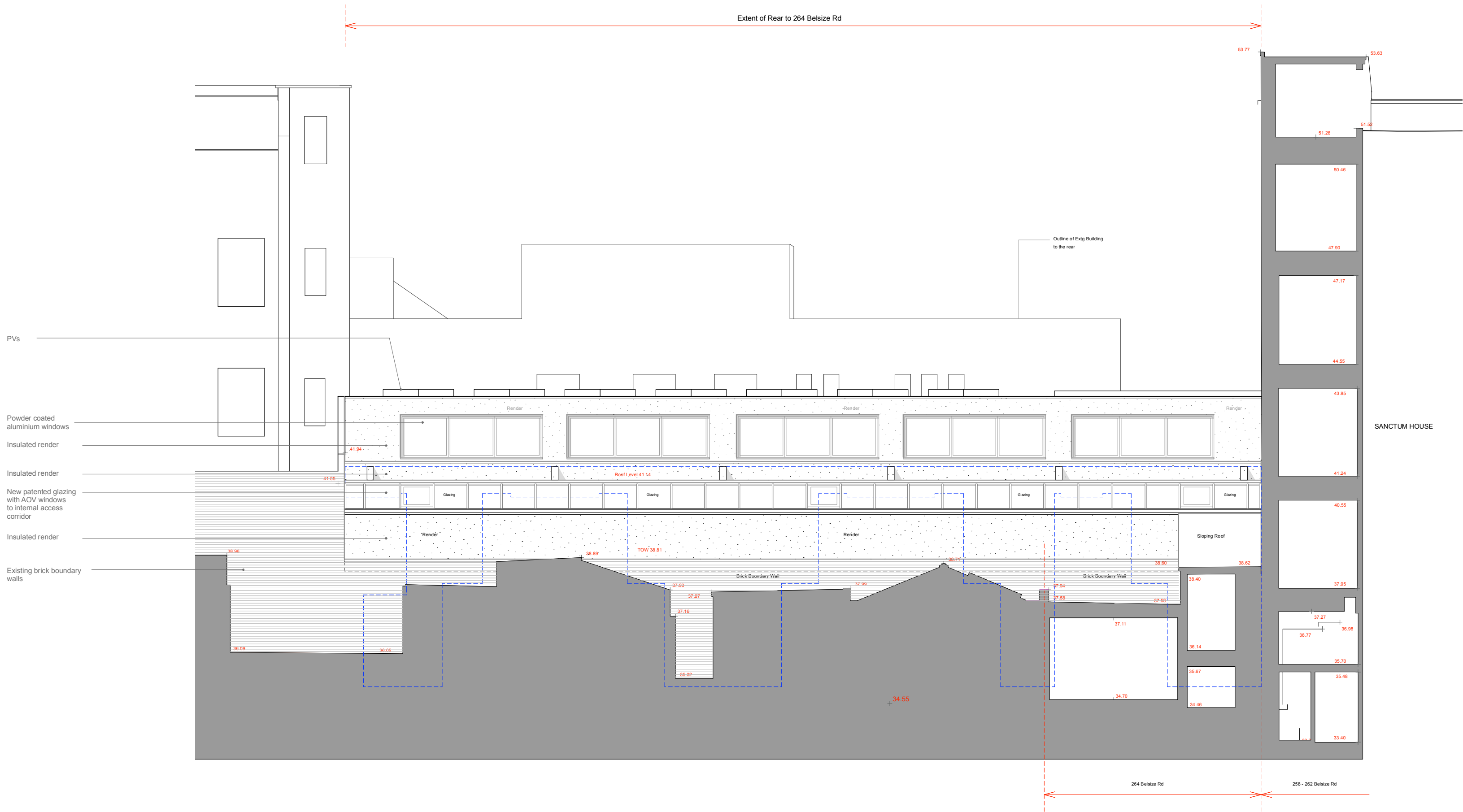
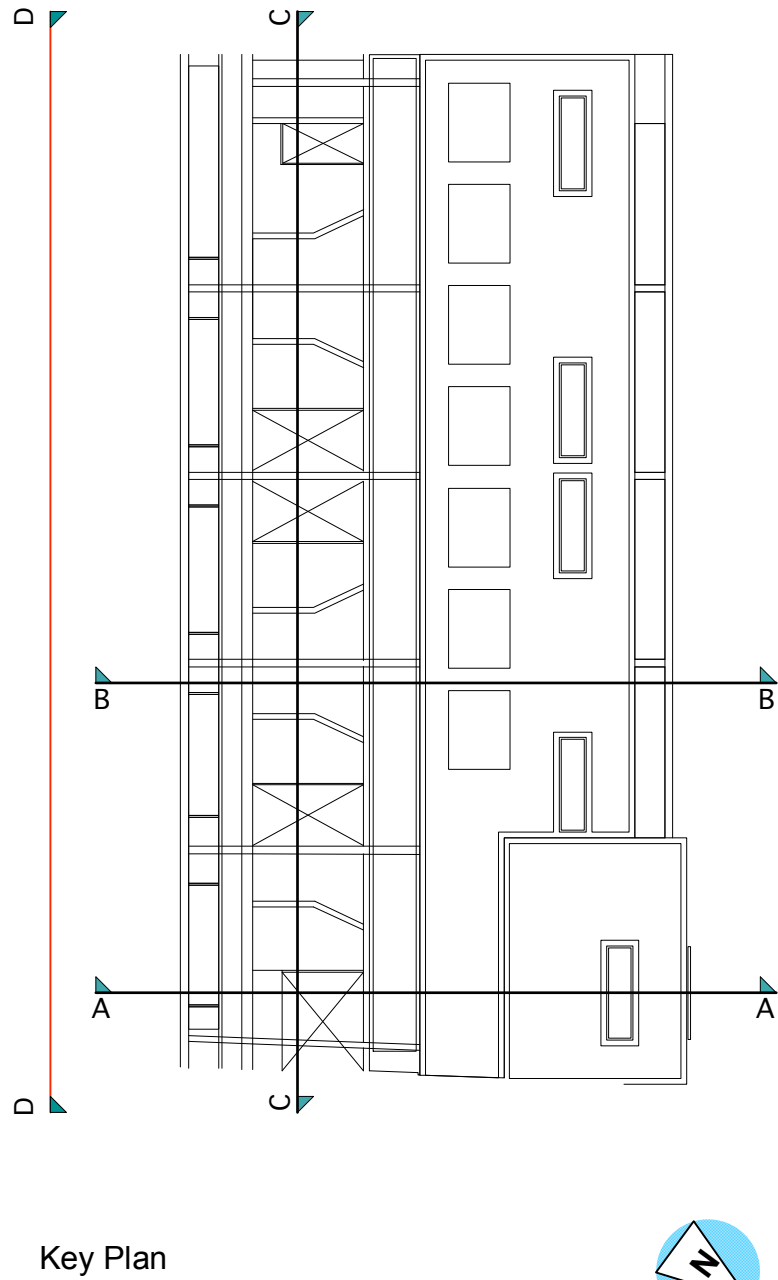


NOTE:
Layout based on survey information



SECTIONAL ELEVATION D-D



Key Plan

SECTIONAL ELEVATION D - D with stepped facade
(South East)

PLANNING



alan power | (ARCHITECTS.)

Alan Power Architects Ltd
13 Needham Road London, W11 2RP
Tel: 020 7229 9375 Fax: 020 7221 4172

DRAWING
Proposed Sectional Elevation D-D (South East Elevation)

PROJECT
264 BELSIZE RD LONDON NW6 4BT

CLIENT
ROXBURG OVERSEAS LIMITED

A2 1:100 @ A2
1:200 @ A4

DRWG. N°
564 - 111

Rev. A

Scale 1:100 @ A2
1:200 @ A4

Date 3 Oct 2022

Drawn

DO NOT SCALE FROM THIS DRAWING. ALL DIMENSIONS TO BE CHECKED ON SITE AND DISCREPANCIES REPORTED TO ARCHITECT