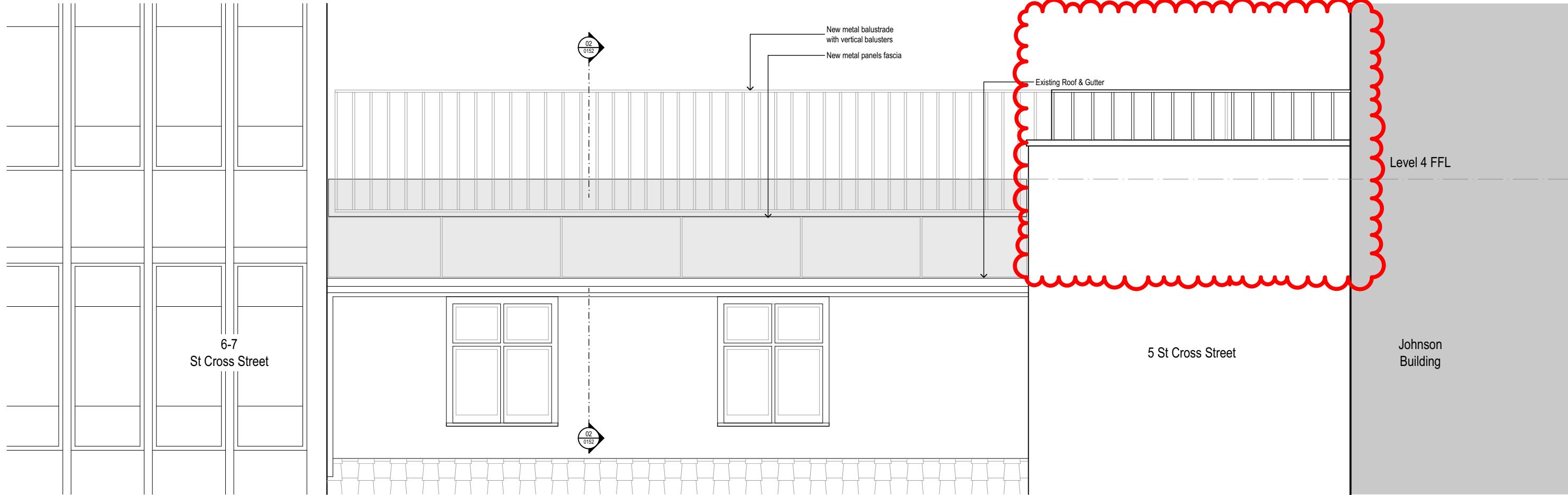


1 Proposed Terrace North Elevation Detail
SCALE 1:50



2 Proposed Terrace South Elevation Detail
SCALE 1:50

01. Steel Balustrade, Fascia and Coping	
Location	L4 5st Cross Street Terrace
Spec Code	NA
Supplier	Steel Arts Metalwork Ltd.
Model	NA
Colour	RAL 9004
Finish	PPC 30% Gloss
Approved By Architects	
John Robertson Architects	
Approved By Client	
Johnson Hatton Office Unit Trust	
Approved By Planning Department	

01

Existing front door and ground floor reception windows are PPC RAL 9004 as per the proposed balustrade, fascia and coping.



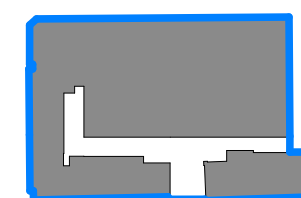
This document and its design content is © John Robertson Architects Ltd. It shall be read in conjunction with all other associated project information including models, specifications, schedules and related consultants documents. Do not scale from documents. All dimensions to be checked on site. Immediately report any discrepancies, errors or omissions on this document to the Originator. If in doubt ASK.

Rev	Date	Dwn	Chk	Description
P01	25/08/2022	AM	LM	Issued for planning
P02	07/10/2022	CV	LM	Issued for planning
P03	18/10/2022	CV	LM	Issued for planning
P04	27/10/2022	CV	LM	Issued For Planning

Rev	Date	Dwn	Chk	Description
-----	------	-----	-----	-------------

Rev	Date	Dwn	Chk	Description
-----	------	-----	-----	-------------

KEY PLAN / NORTH SYMBOL



JRA

John Robertson Architects

111 Southwark Street,
London, SE1 0JF
02076335100
www.jra.co.uk
enquiries@jra.co.uk

Project
Johnson Gardens
London

Client
Johnson Hatton Office Unit Trust
11-15 Seaton Place St Helier
Jersey JE4 0QH UK

Drawing Title
**Johnson Building & 5 St Cross Street -
Proposed Fourth Floor Balustrade Details**

Scale 1:50 @ A1 / 1:50 @ A3 Internal Project No. 1985

Dwg No. **1985-JRA-00-XX-DR-A-0156**

Suitability FOR INFORMATION S2

Revision PRELIMINARY **P04**

Source File: BIMcloud: STSBIM23 - BIMcloud Basic for Archicad 23/1985 - The Estate/1985-JRA-00-ZZ-M3-A-0002_The Estate