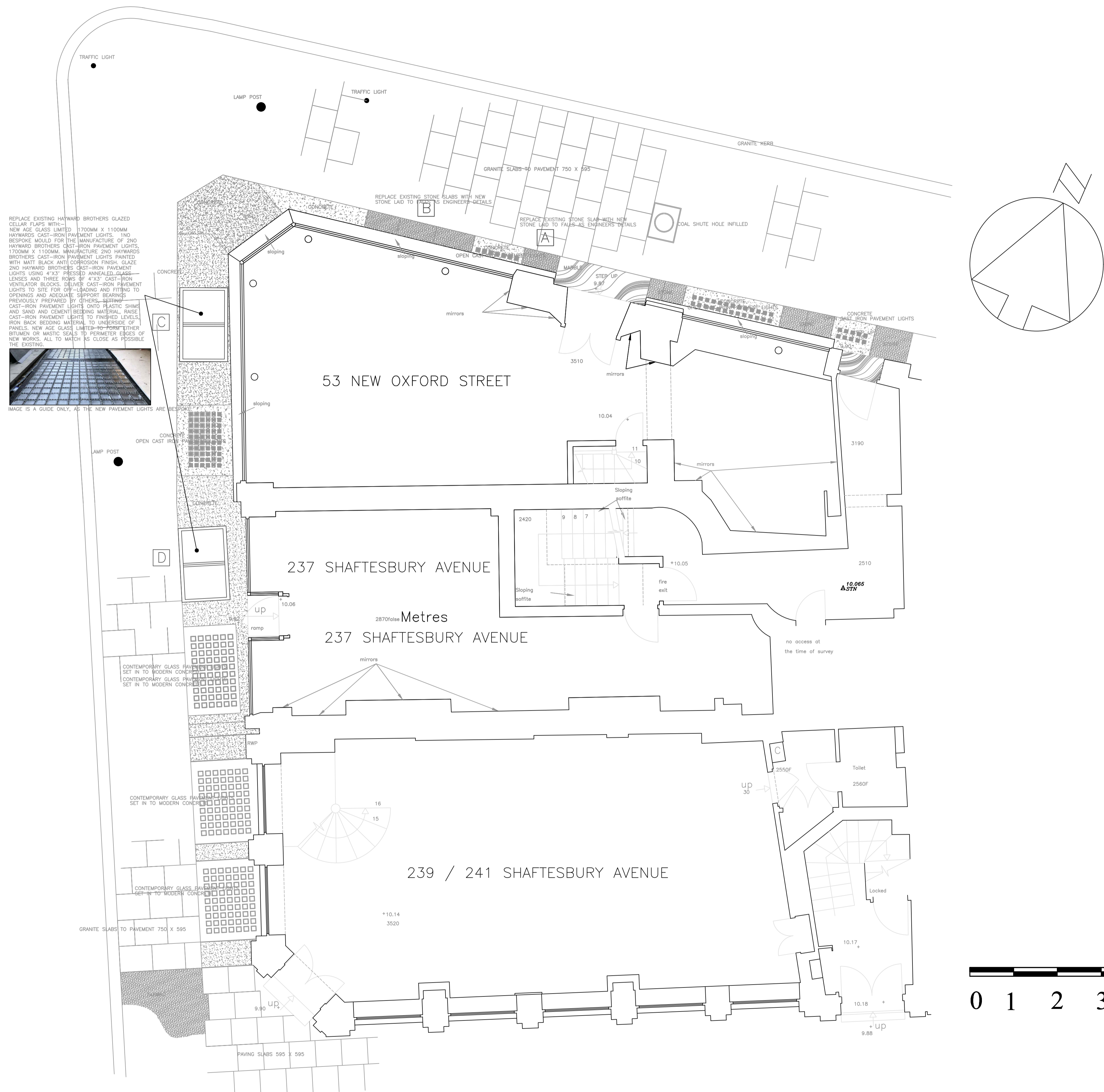


PROPOSED

ALSO READ IN CONJUNCTION
WITH STRUCTURAL ENGINEERS
DETAILS AND HERITAGE
STATEMENT



REPLACE EXISTING HAYWARD BROTHERS GLAZED CELLAR FLAPS WITH—
NEW AGE GLASS LIMITED 1700MM X 1100MM HAYWARDS CAST-IRON PAVEMENT LIGHTS. TWO RESPONSE MOULD FOR THE MANUFACTURE OF 2ND HAYWARD BROTHERS CAST-IRON PAVEMENT LIGHTS, 1700MM X 1100MM. MANUFACTURE 2ND HAYWARD BROTHERS CAST-IRON PAVEMENT LIGHTS PAINTED WITH MATT BLACK ANTI-CORROSION FINISH. GLAZE 2ND HAYWARD BROTHERS CAST-IRON PAVEMENT LIGHTS USING #23 PRESSED ANNEALED GLASS—LENSES AND THREE ROWS OF 4"x3" CAST-IRON VENTILATOR BLOCKS. DELIVER CAST-IRON PAVEMENT LIGHTS TO SITE FOR OFF-LOADING AND FITTING TO OPENINGS AND ADEQUATE SUPPORT BEARINGS PREVIOUSLY PREPARED BY OTHERS—SEPARATE CAST-IRON PAVEMENT LIGHTS ONTO PLASTIC SHIMS AND SAND AND CEMENT BEDDING MATERIAL. RAISE CAST-IRON PAVEMENT LIGHTS TO FINISHED LEVELS. IRON BACK BEDDING MATERIAL TO UNDERSIDE OF PANELS. NEW AGE GLASS LIMITED—FORM EITHER BITUMEN OR MASTIC SEALS TO PERIMETER EDGES OF NEW WORKS. ALL TO MATCH AS CLOSE AS POSSIBLE THE EXISTING.

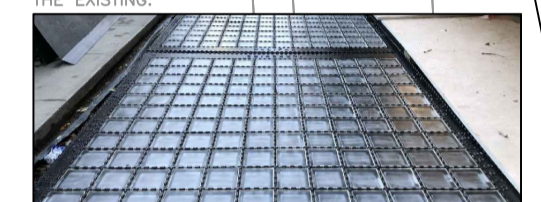
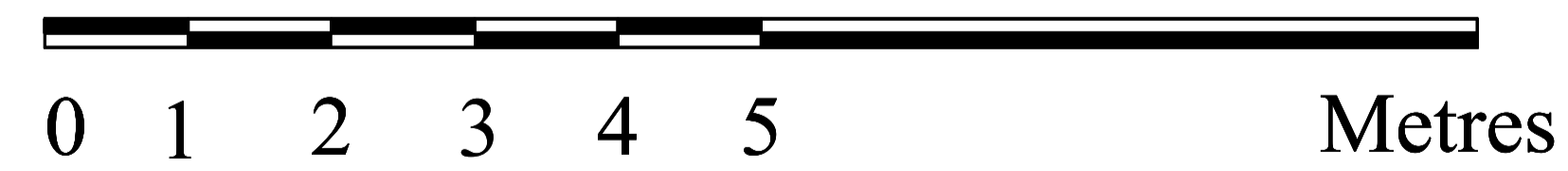


IMAGE IS A GUIDE ONLY, AS THE NEW PAVEMENT LIGHTS ARE BEING SPECIFIED



Metres

REVISION A :- 18.11.2022
AMMENDMENT TO PAVEMENT LIGHT SPECIFICATION

Notes:

This drawing is the property of ANDREWS AND BOYD. Copyright is reserved and this drawing is issued on the condition that it is not copied or disclosed by or to any unauthorised persons without the prior consent in writing of ANDREWS AND BOYD. This drawing is not to be scaled for the purposes of setting-out. Dimensions to be checked on site and verified prior to commencing.

Client ANDREWS AND BOYD	Project 53 New Oxford St, London WC1A 1BL	Drawn by	Drawing Title PROPOSED GROUND FLOOR PLAN	Andrews + Boyd Consultan Limited
REVISION A	Date OCT 2022			24 Old Burlington Street. London. W1S 3AW