



Hatton Garden Johnson Building 5 St Cross Street 6-7 St Cross Street Leather Lane



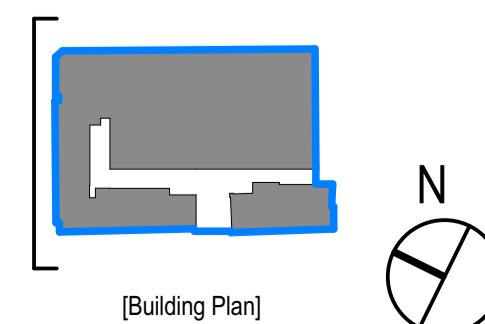
This document and its design content is © John Robertson Architects Ltd. It shall be read in conjunction with all other associated project information including models, specifications, schedules and related consultants documents. Do not scale from documents. All dimensions to be checked on site. Immediately report any discrepancies, errors or omissions on this document to the Originator. If in doubt ASK.

Rev	Date	Dwn	Chk	Description
P01	20/08/2021	AM	LM	Issue for Information
P02	27/08/2021	AM	LM	Issue for Planning

Rev	Date	Dwn	Chk	Description

Rev	Date	Dwn	Chk	Description

KEY PLAN / NORTH SYMBOL



111 Southwark Street,
London, SE1 0JF
02076335100
www.jra.co.uk
enquiries@jra.co.uk

Project
Johnson Gardens
London

Client
Johnson Hatton Office Unit Trust
11-15 Seaton Place St Heller
Jersey JE4 0QH UK

Drawing Title Johnson Building & 5 St Cross Street - Existing North Elevation	
Scale	1:125 @ A1 / 1:250 @ A3 Internal Project No. 1985
Dwg No.	1985-JRA-00-XX-DR-A-0020
Suitability	FOR INFORMATION S2
Revision	PRELIMINARY P02