

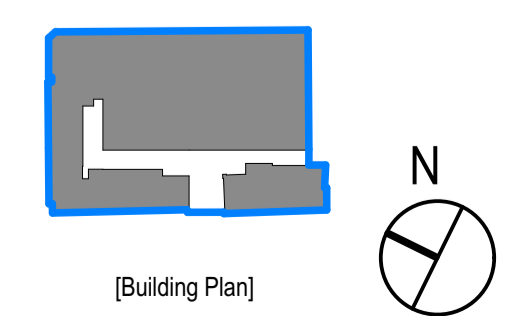
This document and its design content is © John Robertson Architects Ltd. It shall be read in conjunction with all other associated project information including models, specifications, schedules and related consultants documents. Do not scale from documents. All dimensions to be checked on site. Immediately report any discrepancies, errors or omissions on this document to the Originator. If in doubt ASK.

Rev	Date	Dwn	Chk	Description
P01	20/08/2021	AM	LM	Issue for Information
P02	27/08/2021	AM	LM	Issue for Planning
P03	03/12/2021	AM	LM	Issued for Planning
P04	04/02/2022	AM	LM	Issued for Planning
P05	16/09/2022	AM	LM	Work in Progress
P06	07/10/2022	CV	LM	Issued for planning
P07	18/10/2022	CV	LM	Issued for planning

Rev	Date	Dwn	Chk	Description

Rev	Date	Dwn	Chk	Description

KEY PLAN / NORTH SYMBOL



JRA
John Robertson Architects
111 Southwark Street,
London, SE1 0JF
02076335100
www.jra.co.uk
enquiries@jra.co.uk

Project
Johnson Gardens
London
Client
Johnson Hatton Office Unit Trust
11-15 Seaton Place St Heller
Jersey JE4 0QH UK

Drawing Title
Johnson Building & 5 St Cross Street - Proposed Fourth Floor Plan
Scale: 1:125 @ A1 / 1:250 @ A3 Internal Project No. 1985
Dwg No. **1985-JRA-00-04-DR-A-0114**
Suitability FOR INFORMATION S2
Revision PRELIMINARY **P07**